

# U.S. PUBLIC LAND SURVEY MONUMENT RECORD

REGISTER OF DEEDS OFFICE  
ONEIDA COUNTY  
FILED

JUN 08 2017

Note: This form is intended and designed to fulfill all requirements of the Wisconsin Administrative Code, Chapter A-E 7.08 U.S. Public Land Monument Record (3)(a)(b)(c)(d)(e)(f)(g)(h)(i). An additional sheet may be added if necessary to conform with said requirements.

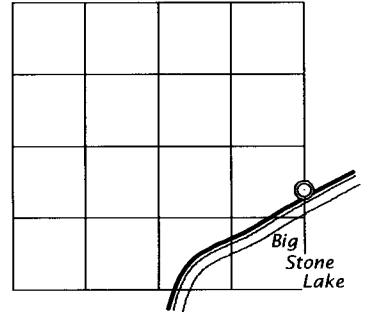
(a) CORNER LOCATION:  
Meander Corner of Section 4  
Township 38 North  
Range 11 East  
Town of Three Lakes  
County of Oneida

WISCRS - Oneida County  
North: 225259.080 USft  
East: 339966.329 USft  
Latitude: 45° 48' 10.84591" N  
Longitude: 89° 06' 47.90670" W  
Datum: NAD 83(2011)  
GNSS Method: RTK - Offset  
GNSS Control: WISCORS VRS  
Ref. Cor. Rec. North: 225259.103 USft  
Ref. Cor. Rec. East: 339963.968 USft  
Record Datum: NAD 83(1991)

AT            O'CLOCK  
KYLE J. FRANSON  
REGISTER OF DEEDS

(RECORDING AREA)

SECTION 4



(b) HISTORY OF ORIGINAL CORNER ESTABLISHMENT

Original Surveyor: William E. Dougherty  
Date of Survey: Commenced August 30, 1859  
Completed September 5, 1859  
Original B.T.'S: Sugar 8" N 10°E, 22 lks.  
Hemlock 10" N 40°W 25 lks.

(f)(g)(h) DESCRIPTION OF MONUMENT FOUND AT THIS CORNER AND IF IT WAS ACCEPTED, STATE ALL EVIDENCE (MATERIAL, TESTIMONIAL, OCCUPATIONAL, PLATS, RECORD, OTHER MONUMENTS) USED AS A BASIS FOR ESTABLISHING LOCATION. IF NOT ACCEPTED OR IF NOTHING WAS FOUND, STATE EVIDENCE USED AS BASIS FOR ESTABLISHING LOCATION. IF REESTABLISHED THROUGH LOST CORNER PROPORTIONATE METHODS, INDICATE ALL MONUMENTS, DISTANCES AND DIRECTIONS USED TO ESTABLISH. INDICATE TYPE OF MONUMENT AND SIGN POST FOUND OR SET.

Decemer 29, 1915 - B. F. Dorr, County Surveyor, notes filed county surveyor's office, (Old Field Book 8, page 33), retraces east line of Section 4 from the southeast corner to northeast corner and does not recover meander corner.

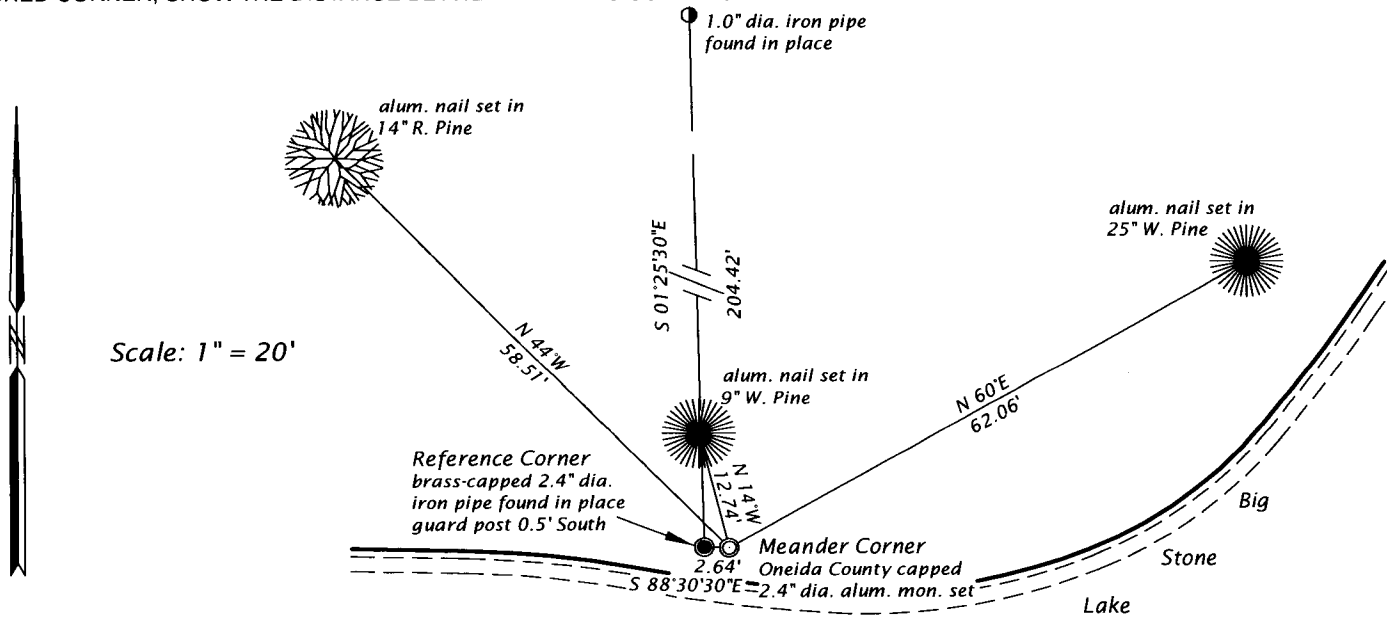
August 9, 1941 - V. M. Maine, County Surveyor, notes filed in county surveyor's office, (Maine 1941 Diary, pages 84 and 85), describes data that was furnished to him by Mr. Crawford, Land Department Surveyor, U.S. Dept of Int., describes segment of line from M.C. to 1/4 stk. N1°27'W, 11.40 chains, or 752.4 feet.

June 3, 1968 - Robert E. Bandow, RLS No. 104, Genisot and Associates, Inc., Dwg. No. 4132, describes "M.C. 2.64' EAST OF BRASS CAP R.C." referenced to an iron pipe boundary corner bearing N 2° 55' W, 205.6'.

March 29, 2017 - James D. Rein, PLS No. 1234, we recovered the reference corner, a brass-capped 2.4" dia. iron pipe marked "MC 2.64' E. Because this monument has been accepted as a reference to the meander corner, by prior surveyor's in both sections, I accept it as the best available evidence of the original corner position, which we monument with an Oneida County capped 2.4" dia. x 30" long aluminum monument and made additional reference ties as shown in the plan.

The coordinate value shown has been verified by at least one of the following methods: 1) comparison to a previously GPS determined published value; 2) the value is the average of two or more GPS observations at a markedly different time; 3) one or more distances were measured back to the GPS observed corner from temporary GPS observed offset locations.

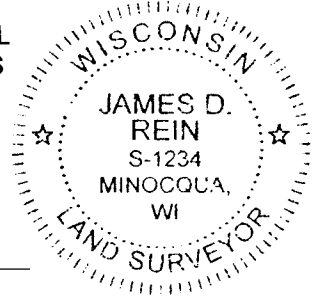
(c)(d)(e) PLAN VIEW OF CORNER WITH TIES TO AT LEAST 4 WITNESS MONUMENTS. IF IN DISAGREEMENT WITH PREVIOUSLY ESTABLISHED CORNER, SHOW THE DISTANCE BETWEEN THE TWO CORNERS AND ALSO INDICATE THE TIES TO THE DISPUTED CORNER.



(i) I, JAMES D. REIN, PROFESSIONAL LAND SURVEYOR NO. S-1234 HEREBY CERTIFY THAT THE CORNER LOCATION ON THIS RECORD WAS DETERMINED BY ME OR UNDER MY DIRECTION AND CONTROL AND THAT THIS U.S. PUBLIC LAND SURVEY MONUMENT RECORD IS CORRECT AND COMPLETE TO THE BEST OF MY KNOWLEDGE AND BELIEF.

*James D. Rein*  
SIGNATURE

5-24-17  
DATE



INDEX NO. CD - 13  
3811041600