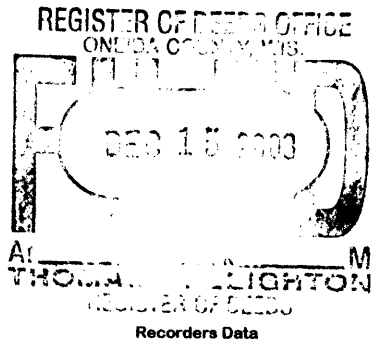


This form is intended to fulfill the requirements of Chapter A-E7.08 (3)(a) thru (i) U.S. Public Land Survey Monument Location Record, Wisconsin Administrative Code. Use the reverse side of form for continuation.



U.S. PUBLIC LAND SURVEY MONUMENT LOCATION RECORD

USPLS CORNER: NORTH WIT MC SECTION: 3 TOWNSHIP: 38 NORTH RANGE: 11 EAST
 NAME OF WATERWAY FOR M.C. CORNER: LAUREL LAKE SECTION LINE: WEST
 (CITY)(VILLAGE)(TOWN) OF: THREE LAKES COUNTY OF: ONEIDA

Description of monument found or placed and all other evidence used as the basis for monument location; including monuments and measurements required if the corner location was reestablished by lost corner proportionate methods. Also indicate name of the original surveyor, original survey date and the corner monument, bearing trees, witness or other reference monuments established, including measured bearing and distance ties, from available survey records.

Found an older 1.5" dia. red painted iron pipe with uncapped top 8" up and tipped slightly South toward old 12" high by 12" dia. sawed off stump 18" to center; I replumbed the iron pipe and drove a standard 2" dia. by 30" long aluminum pipe monument over it with stamped Oneida County cap 10" up; corner falls 3.5'+/- North of lake shoreline bearing N35°E.

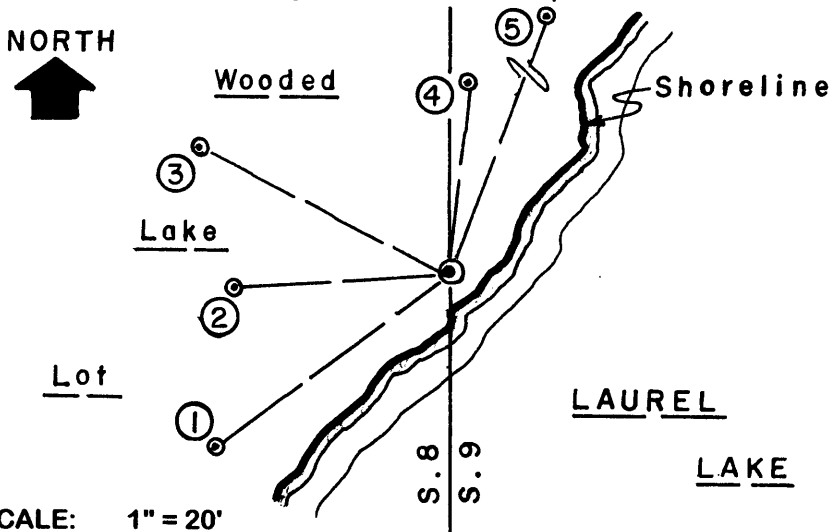
In September 1859, William E. Daugherty/GLO set a wood post as original MC and noted OBTs 13.5 chains South of the NW corner of Section 3, which are all now undoubtedly obliterated in impounded lake bed due to dam on the Eagle River in Section 5.

In October 1955, Robert Badow/RLS 104 notes an iron pipe at this Wit MC per Plat of Survey filed as B-83 in Oneida County survey records. In Sept 1955, F.R. Wincentsen/RLS 155 denotes a GLO monument (undoubtedly the iron pipe noted above by Badow) at this Wit MC per Page 203 of Book 1 of his field notes in Oneida County survey records.

In July 1983, James Will/RLS 1410 notes a 1.5" dia. iron pipe in place at this corner per Volume 4 of CSM Page 1008 in Oneida County records. In July 1992, Kip Soder/RLS 1731 notes a 1.25" dia. iron pipe found in place at this Wit MC per Plat of Survey filed as B-2521 in Oneida County survey records.

This recovery completed August 13, 2003; there were no direct witnesses.

Plan view map of monument location with bearing and distance ties to a minimum of four(4) described witness or reference monuments of concrete, natural stone, iron, live bearing trees or equivalent material. If applicable, also show a minimum of two(2) bearing and distance ties to any other monument found and not accepted; including the bearing and distance from the accepted monument.



WITNESS MONUMENT TIES:

- ① New 10" Pr BT S52°W 30.68'.
- ② New BT 9" Pr S86°W 22.03'.
- ③ Probable old BT with plain face blaze scar above root crown N63°W 29.20'.
- ④ New BT 9" Mr N06°E 20.19'.
- ⑤ New BT 12" Pr N20°E 38.62'.

Standard white poly "T" marker post set 3" SW of aluminum monument at Wit MC; and I flagged aluminum monument with blaze orange tape only.

Unless otherwise indicated, all bearing tree ties are to a .25" dia. by 2.5" long PK nail with a 1.25" dia. steel washer driven into unblazed right face and a .25" dia. by 2.5" long PK nail with a 2" dia. steel washer stamped BT is also driven into unblazed face of bearing tree at DBH; the basis for measured bearings is by compass to nearest degree and all tie distances are measured horizontal by steel tape corrected to nearest 1/100th feet at standard temperature of 68° F.

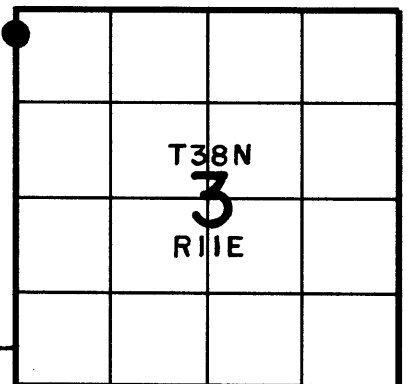
RLS SEAL:



LAND SURVEYOR CERTIFICATE:

I, William C. Rohde, hereby certify that I am duly licensed as a Professional Land Surveyor in the State of Wisconsin; that this USPLS monument location was determined by me and/or under my direct supervision and control; and that this U.S. Public Land Survey Monument Location Record is true and correct to the best of my knowledge and belief.

Signed: *William C. Rohde*
 William C. Rohde RLS 841



SECTION LOCATION MAP
 INDEX NO. A B 13

Date Signed: December 1, 2003

3811043900