

CERTIFIED LAND CORNER RESTORATION

State of Wisconsin }
County of Oneida } ss.

I William E. Badow, do hereby certify that on the 18th day of June 1982, I found evidence of the West meander corner of South line Section 5 Township 38 North Range 11 East, Fourth Principal Meridian, as described hereon; and that from this evidence I established a new monument and accessories as described hereon to perpetuate the original location of this corner:

Description of original monument and accessories and subsequent restorations:

Corner by William Daugherty 1859. West between 5 & 8 40.29 set meander post. BT's Hemlock 12" N80W 53 links Hemlock 10" S55W 49 links C.W. Russell found corner & original BT's December 1901. D.H. Vaughan found original stumps December 1915 & made new BT's Telephone pole N42W 66 3/4 links Hemlock 11" S27 1/2 W 87 3/4 links

Description of corner evidence found:

Found D.H. Vaughan's BT's. Telephone pole (cut off) N44W 44.1' 24" Hemlock stump S29W 57.9'

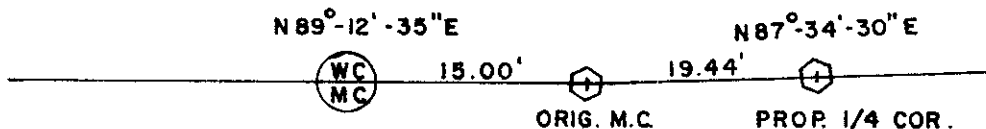
Corner falls in lake.

Compared with all record data and accepted as correct.

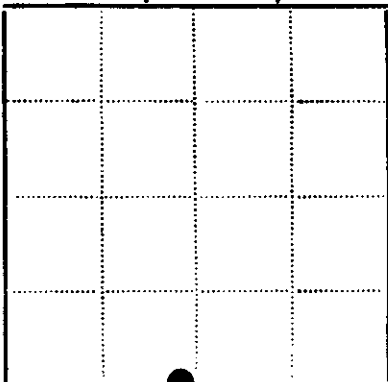
Robert H. Winat, Oneida Co. Surv. 11 November 1984

Description of monument and accessories I established to perpetuate the location of this corner:

Set Oneida County aluminum monument marked WC MC. Monument is 15.00' west on section line from original meander corner. Made new BT's for WC. PK nail in 9" Maple N24-00'E 14.44' PK nail in 4" Maple N57-00'W 17.25' Corner of concrete cottage foundation S45-00'W 45.21'



SEC. 5, T38N, R11E



Legend: ● - Corner monument restored □ -

Resident witnesses.....

Dated at Rhinelander Wisconsin, this 30th day of August 1982.

Signature William E. Badow Title Registered Land Surveyor (County Surveyor, Registered Land Surveyor, or other duly authorized official)

Surveyors Registration No. S-1182 seal on back

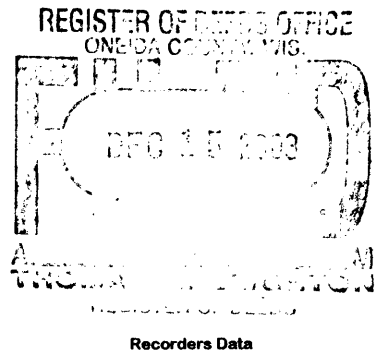
Office of Register of Deeds County of Oneida

I hereby certify that the within instrument was filed in this office for record on the 14 day of November 1984, and was filed in Book No. Page No. of County Records.

Signature Paris Verage Kudry Title Register of Deeds Cynthia A. Witts, Deputy

Township, Range, Section, Index No., Page No.

E-7



Recorders Data

This form is intended to fulfill the requirements of Chapter A-E7.08 (3)(a) thru (i) U.S. Public Land Survey Monument Location Record, Wisconsin Administrative Code. Use the reverse side of form for continuation.

**U.S. PUBLIC LAND SURVEY MONUMENT LOCATION RECORD**

USPLS CORNER: WEST WIT MC SECTION: 8 TOWNSHIP: 38 NORTH RANGE: 11 EAST  
 NAME OF WATERWAY FOR M.C. CORNER: SPIRIT LAKE SECTION LINE: NORTH  
 (CITY)(VILLAGE)(TOWN) OF: THREE LAKES COUNTY OF: ONEIDA

Description of monument found or placed and all other evidence used as the basis for monument location; including monuments and measurements required if the corner location was reestablished by lost corner proportionate methods. Also indicate name of the original surveyor, original survey date and the corner monument, bearing trees, witness or other reference monuments established, including measured bearing and distance ties, from available survey records.

Found and re-referenced an older aluminum pipe monument with stamped Oneida County cap 3" up, per approval of Oneida County Surveyor Romportl as remaining record ties inadequate; I drove monument flush with lawn on frontage of improved lake lot to deter disturbance from lake ice action. Corner is 2.5'+/- West of lakeshore bearing S12°E this date.

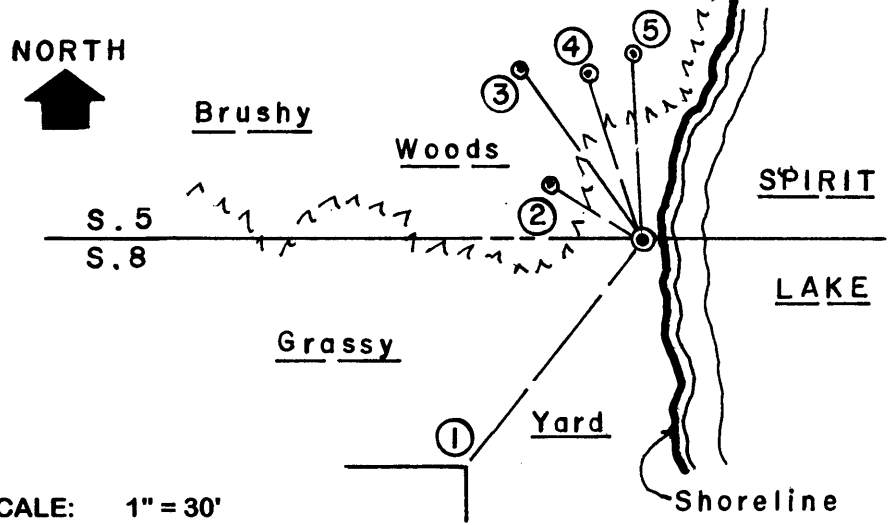
In September 1859, William E. Daugherty/GLO set a wood post as original MC and marked OBTs: a 12" Hemlock N80°W 53 links and a 10" Hemlock S55°W 49 links; all now obliterated.

In January 1902, C.W. Russell/GLO found original GLO corner and both GLO OBTs as stumps with plain marks during an island survey per notes filed as L-366 in Oneida County survey records.

In December 1915, D.H. Vaughan found both GLO OBTs as stumps and noted newBTs: a telephone pole N42°W 66.75 links and a 11" Hemlock S27.5°W 57.9'; all now obliterated.

On November 14, 1984 a Certified Land Corner Restoration Record by William E. Bandow/RLS 1182 was filed in Oneida County records; PK nail is overgrown in his NE Mr BT now a 9.5" Mr N26°E 14.5' to center and his PK nail is overgrown in his NW Mr BT, now a 6" Mr found and used for new ties, his NE corner reference of cottage foundation also used for new ties. This recovery completed August 19, 2003; there were no direct witnesses.

Plan view map of monument location with bearing and distance ties to a minimum of four(4) described witness or reference monuments of concrete, natural stone, iron, live bearing trees or equivalent material. If applicable, also show a minimum of two(2) bearing and distance ties to any other monument found and not accepted; including the bearing and distance from the accepted monument.



- WITNESS MONUMENT TIES:**
- ① NE corner of concrete block cottage foundation S38°W 45.21' at grade.
  - ② Old 6" Mr BT N56°W 17.15'.
  - ③ New 7" Mr BT N35°W 33.36'.
  - ④ New 8" Cedar BT N19°W 27.30'.
  - ⑤ New 6" Mr BT N03°W 29.62'.
- No standard white poly 'T' marker post set near Wit MC monument in lawn area. GLO MC is noted 15' East into lake per 1984 location record by Bandow.

SCALE: 1" = 30'

Unless otherwise indicated, all bearing tree ties are to a .25" dia. by 2.5" long PK nail with a 1.25" dia. steel washer driven into unblazed right face and a .25" dia. by 2.5" long PK nail with a 2" dia. steel washer stamped BT is also driven into unblazed face of bearing tree at DBH; the basis for measured bearings is by compass to nearest degree and all tie distances are measured horizontal by steel tape corrected to nearest 1/100th feet at standard temperature of 68° F.

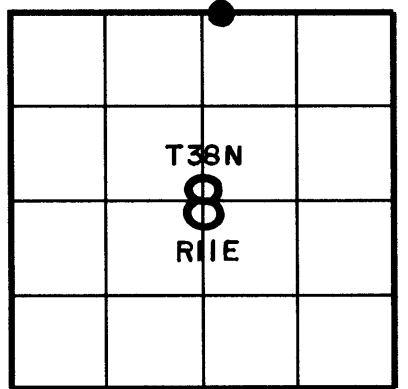
RLS SEAL:



LAND SURVEYOR CERTIFICATE:

I, William C. Rohde, hereby certify that I am duly licensed as a Professional Land Surveyor in the State of Wisconsin; that this USPLS monument location was determined by me and/or under my direct supervision and control; and that this U.S. Public Land Survey Monument Location Record is true and correct to the best of my knowledge and belief.

Signed: *William C. Rohde*  
 William C. Rohde RLS 841



SECTION LOCATION MAP  
 INDEX NO. E 7-8  
 3811050021