

CERTIFIED LAND CORNER RESTORATION

State of Wisconsin }
County of Oneida } ss.

I William E. Bandow, do hereby certify that on the 18th day of June, 1982, I found evidence of the Spirit Lake N. shore meander corner of East line Section 5 Township 38 North Range 11 East, Fourth Principal Meridian, as described hereon; and that from this evidence I established a new monument and accessories as described hereon to perpetuate the original location of this corner:

Description of original monument and accessories and subsequent restorations:

Corner by William Daugherty 1859. North between 4 & 5, 40.43 over lake & set meander post. BT's. Birch 7" N46W 17 links
Birch 8" N13 E 8 links
D.H. Vaughan set meander corner December 1915. No original evidence. Made new ET. N. Pine N75W 15 links
Recovered by J.M. Abernathy October 1948
Recovered by R.E. Bandow June 1962

Description of corner evidence found:

Found 6"x6" concrete post perpetuated by persons unknown.
Found D.H. Vaughan's ET. N. Pine 26" N70W 10.5'

Description of monument and accessories I established to perpetuate the location of this corner:

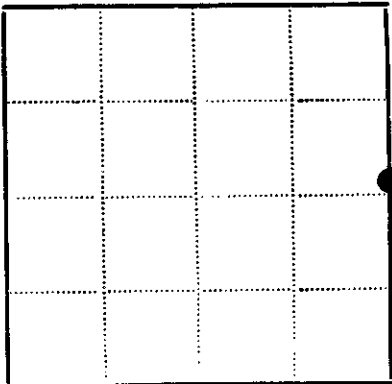
Concrete monument remains in place. Old ET N. Pine 26" N70W 10.5'
Made new ET's. PK nail in 4" Maple S42W 28.20'
PK nail in 11" Maple East 28.95'

Compared with all record data and accepted as correct.

Robert H. Winat
Robert H. Winat, Oneida Co. Surv.
14 November 1984



SEC. 5, T38N, R11E



● - Corner monument restored
□ -

Resident witnesses.....

Dated at Rhinelander Wisconsin, this 30th day of August 1982..

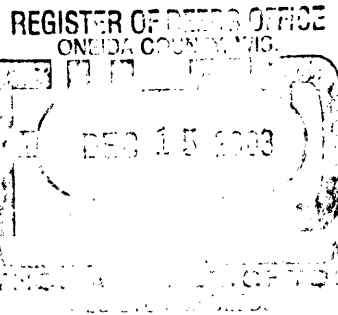
Signature *William E. Bandow* Title Registered Surveyor
(County Surveyor, Registered Land Surveyor, or other duly authorized official)

Surveyors Registration No. S-1182

Office of *Register of Deeds* County of *Oneida*,
I hereby certify that the within instrument was filed in this office for record on the 14 day of *November* 1984, and was filed in Book No. Page No. of County Records.

Signature *Doris Verage Kuhn* Title *Register of Deeds*
Cyrena A. Pitas, Deputy

Township....., Range....., Section....., Index No....., Page No.....



Recorders Data

This form is intended to fulfill the requirements of Chapter A-E7.08 (3)(a) thru (i) U.S. Public Land Survey Monument Location Record, Wisconsin Administrative Code. Use the reverse side of form for continuation.

U.S. PUBLIC LAND SURVEY MONUMENT LOCATION RECORD

USPLS CORNER: NORTH WIT MC SECTION: 4 TOWNSHIP: 38 NORTH RANGE: 11 EAST
 NAME OF WATERWAY FOR M.C. CORNER : SPIRIT LAKE SECTION LINE: WEST
 (CITY)(VILLAGE)(TOWN) OF: THREE LAKES COUNTY OF: ONEIDA

Description of monument found or placed and all other evidence used as the basis for monument location; including monuments and measurements required if the corner location was reestablished by lost corner proportionate methods. Also indicate name of the original surveyor, original survey date and the corner monument, bearing trees, witness or other reference monuments established, including measured bearing and distance ties, from available survey records.

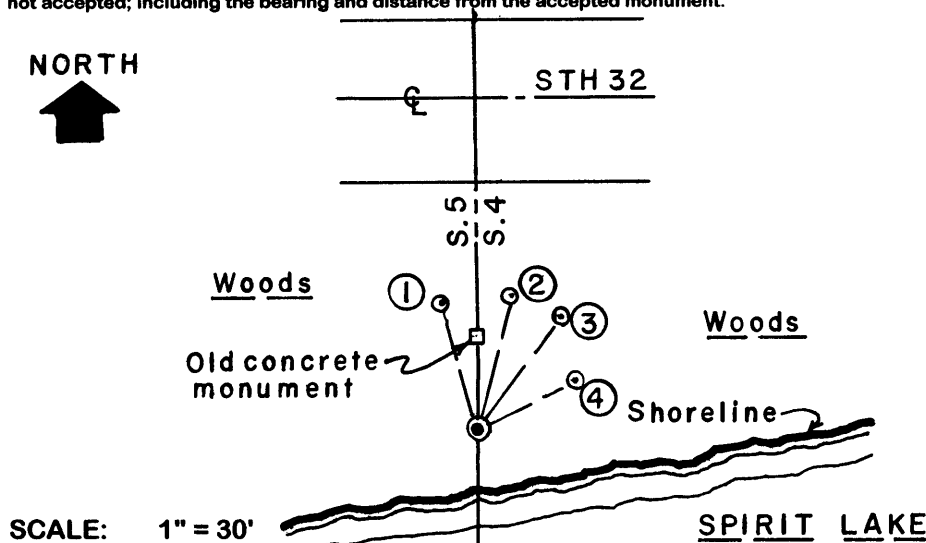
Found an old 5.5" by 6" concrete monument with uncapped top 36" up and tipped 30°+/- South, which would require extensive digging and winching to replumb for new ties, so I set a new Wit MC per approval of Oneida County Surveyor Romportl, with a standard 2" dia. by 30" long aluminum pipe monument with stamped Oneida County cap 2" up about 14' South of old concrete monument on the section line by field survey per data sketch on reverse.

In September 1859, William E. Daugherty/GLO set a wood post as original MC and noted OBTs: a 7" Bw N46°W 17 links and an 8" Bw N13°E 8 links; all are now obliterated.

William E. Bandow/RLS 1182 filed a Certified Land Corner Restoration Record on November 14, 1984 in Oneida County records; his reference to a Pr BT by Vaughan N70°W 10.5', now found as a 21" Pr with long lower face blaze scar plain, his 4" Mr BT S42°W now found as a sawed off 3" high stump and his 11" Mr East now found as a dead 50'+/- high pike with open and scribed upper and lower face blazes.

This recovery completed August 19, 2003; there were no direct witnesses.

Plan view map of monument location with bearing and distance ties to a minimum of four(4) described witness or reference monuments of concrete, natural stone, iron, live bearing trees or equivalent material. If applicable, also show a minimum of two(2) bearing and distance ties to any other monument found and not accepted; including the bearing and distance from the accepted monument.



WITNESS MONUMENT TIES:

- ① New 7" Pr BT N13°W 18.94'.
- ② New 9" Pr BT N14°E 22.20'.
- ③ New 6" Pr BT N36°E 21.55'.
- ④ New 5" Cedar BT N62°E 16.72'.

New Wit MC monument falls 10.5'+/- North of lakeshore bearing S80°W, that is bermed from previous lake wave and ice action, and is 52'+/- South of the centerline of STH 32 pavement.

Standard white poly 'T' marker post set 7" North of new Wit MC monument.

SCALE: 1" = 30'

Unless otherwise indicated, all bearing tree ties are to a .25" dia. by 2.5" long PK nail with a 1.25" dia. steel washer driven into unblazed right face and a .25" dia. by 2.5" long PK nail with a 2" dia. steel washer stamped BT is also driven into unblazed face of bearing tree at DBH; the basis for measured bearings is by compass to nearest degree and all tie distances are measured horizontal by steel tape corrected to nearest 1/100th feet at standard temperature of 68° F.

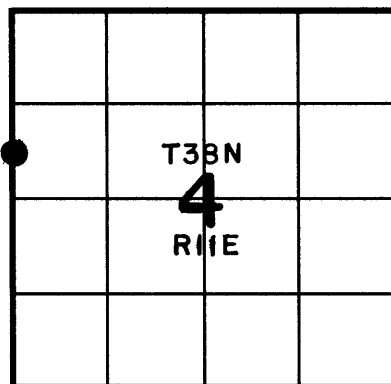
RLS SEAL:



LAND SURVEYOR CERTIFICATE:

I, William C. Rohde, hereby certify that I am duly licensed as a Professional Land Surveyor in the State of Wisconsin; that this USPLS monument location was determined by me and/or under my direct supervision and control; and that this U.S. Public Land Survey Monument Location Record is true and correct to the best of my knowledge and belief.

Signed: *William C. Rohde*
 William C. Rohde RLS 841



SECTION LOCATION MAP
 INDEX NO. BC 9

3811052200

