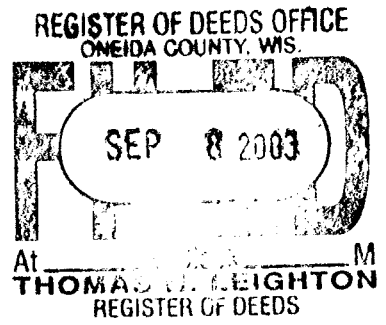


This form is intended to fulfill the requirements of Chapter A-E7.08 (3)(a) thru (i) U.S. Public Land Survey Monument Location Record, Wisconsin Administrative Code. Use the reverse side of form for continuation.



Recorders Data

U.S. PUBLIC LAND SURVEY MONUMENT LOCATION RECORD

USPLS CORNER: NORTH WIT MC SECTION: 4 TOWNSHIP: 38 NORTH RANGE: 11 EAST
 NAME OF WATERWAY FOR M.C. CORNER : MEDICINE LAKE SECTION LINE: WEST
 (CITY)(VILLAGE)(TOWN) OF: THREE LAKES COUNTY OF: ONEIDA

Description of monument found or placed and all other evidence used as the basis for monument location; including monuments and measurements required if the corner location was reestablished by lost corner proportionate methods. Also indicate name of the original surveyor, original survey date and the corner monument, bearing trees, witness or other reference monuments established, including measured bearing and distance ties, from available survey records.

No record monument or BTs found at this corner location so I set a standard 2" dia. by 30" long aluminum pipe monument with stamped Oneida County cap 6" up as a new Witness MC on section line by reference offset from iron pipe monuments found for record Plats of Survey in adjoining Section 5, per survey control data on the reverse of this record form. The corner falls 32'+- South of lake shoreline bearing East/West and is also 3.5' West of an old woven wire North/South fence.

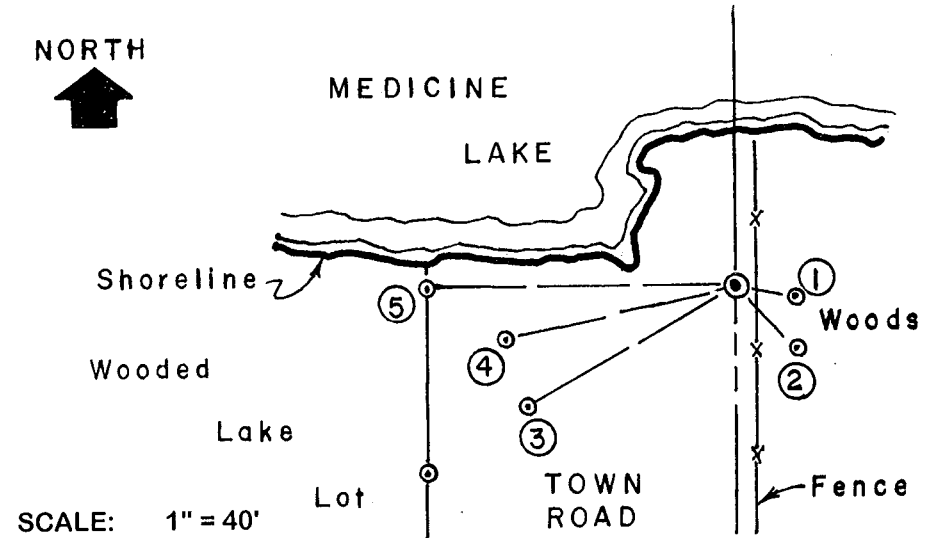
In September 1859, William E. Daugherty/GLO set a wood post as the original corner and noted OBTs: a 10" Bw S24°W 18 links and an 8" Bw S45°E 19 linls; all are now gone.

In July 1962, Robert E. Bandow/RLS 104 defines section line between Section 4 & 5 by parallel offsets per Plat of Survey West of the section line filed as B-3229 in Oneida County survey records.

In August 1986, James Will/RLS 1410 also similarly defines the section line between Section 4 & 5 by the same parallel offsets per Plats of Survey filed as B-1508 and B-1515 in Oneida County survey records.

This recovery completed July 22, 2003; there were no direct witnesses.

Plan view map of monument location with bearing and distance ties to a minimum of four(4) described witness or reference monuments of concrete, natural stone, iron, live bearing trees or equivalent material. If applicable, also show a minimum of two(2) bearing and distance ties to any other monument found and not accepted; including the bearing and distance from the accepted monument.



WITNESS MONUMENT TIES:

- ① New 11" Pw BT S80°E 12.14'.
- ② New 9" Pr BT S45°E 18.20'.
- ③ New 8" Mr BT S60°W 50.23'.
- ④ New 13" Pr BT S77°W 48.75'.
- ⑤ Old 3/4" dia. iron pipe of record found with uncapped top 3" up West 64.07' /used to set new MC monument.

Standard white poly 'T' corner marker post set 12" West of MC monument. I flagged monument, 'T' post and all BTs with blaze orange tape.

Unless otherwise indicated, all bearing tree ties are to a .25" dia. by 2.5" long PK nail with a 1.25" dia. steel washer driven into unblazed right face and a .25" dia. by 2.5" long PK nail with a 2" dia. steel washer stamped BT is also driven into unblazed face of bearing tree at DBH; the basis for measured bearings is by compass to nearest degree and all tie distances are measured horizontal by steel tape corrected to nearest 1/100th feet at standard temperature of 68° F.

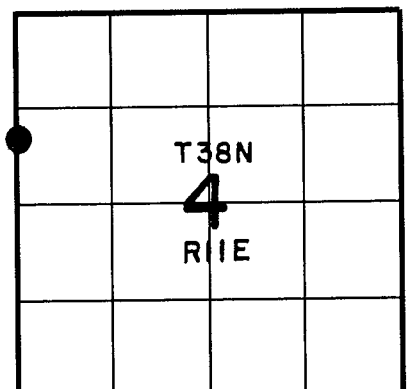
RLS SEAL:



LAND SURVEYOR CERTIFICATE:

I, William C. Rohde, hereby certify that I am duly licensed as a Professional Land Surveyor in the State of Wisconsin; that this USPLS monument location was determined by me and/or under my direct supervision and control; and that this U.S. Public Land Survey Monument Location Record is true and correct to the best of my knowledge and belief.

Signed: *William C. Rohde*
 William C. Rohde RLS 841



SECTION LOCATION MAP INDEX NO. B/c - 9

Date Signed: August 29, 2003

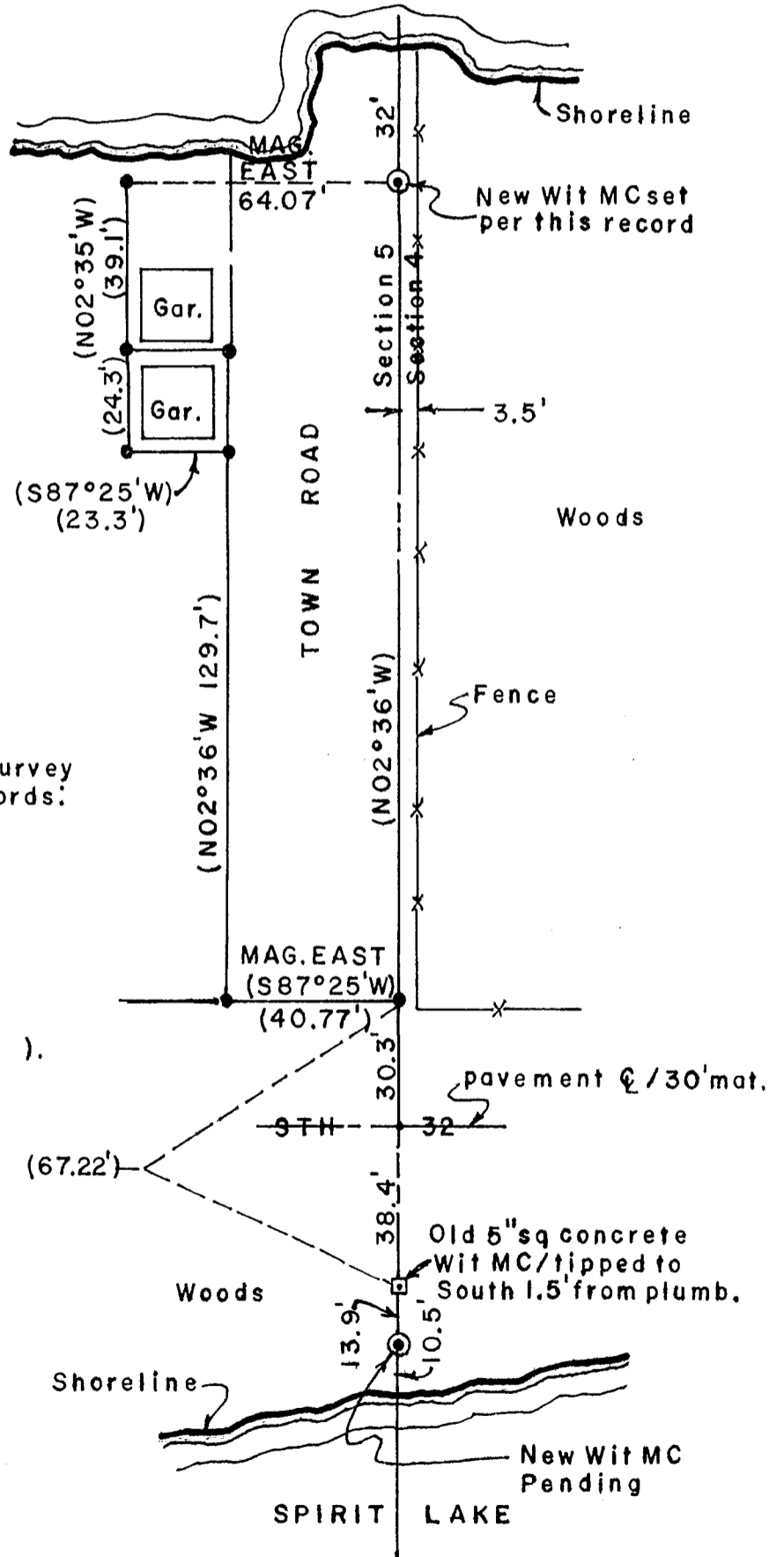
3811052400

NORTH



1" = 40'

MEDICINE LAKE



Reference Plats of Survey
In Oneida County Records:

- B-1508
- B-1515
- B-3229

NOTE:

Record data shown in ().

● 1" iron pipe found.