

CERTIFIED LAND CORNER RESTORATION FOR U.S. PUBLIC
LAND SURVEY MONUMENT RECORD

State of Wisconsin }
County of Oneida } ss.

I William E. Badow, do hereby certify that on the 15th day of September, 1982,
I found evidence of the Southwest corner of Section 5
Township 38 North Range 11 East, Fourth Principal Meridian, as described
hereon; and that from this evidence I established a new monument and accessories as described hereon to per-
petuate the original location of this corner:

Description of original monument and accessories and subsequent restorations:

Corner by William Daugherty in 1859. North between 7 & 8, 80.00
set post. BT's Balsam 12" N80W 5 links
Sugar 14" N60E 8 links
Corner recovered by J.M. Abernathy April, 1950. No original evidence.
Corner recovered by R.E. Badow April 1956
Corner recovered by R.E. Badow August 1968

Description of corner evidence found:

Found PK nail in bituminous pavement. Iron pipe underneath.

Compared with all record
data and accepted as correct.

Robert H. Knick

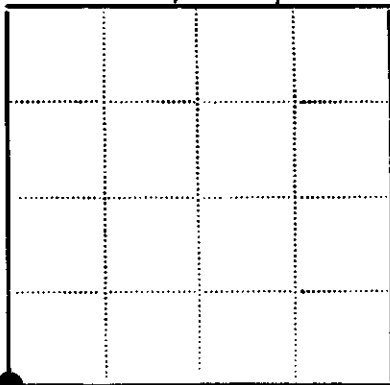
Oneida County Surveyor 27 Apr 1983

Description of monument and accessories I established to perpetuate the location of this corner:

PK nail & iron pipe remain. Made new BT's.
PK nail in 12" N. Pine N25E 79.14'
PK nail in Power Pole N50E 55.60'
PK nail in Power Pole S61E 63.14'
PK nail in Power Pole S66W 73.00'

SEE REVERSE SIDE FOR ADDITIONAL DATA

SEC. 5, T38N, R11E



● - Corner monument restored
□ -

Resident witnesses.....

Dated at Rhineland Wisconsin, this 30th day of September
1982.....

Signature William E. Badow Title Registered Surveyor
(County Surveyor, Registered Land Surveyor, or other duly authorized official)

Surveyors Registration No. S-1182.....

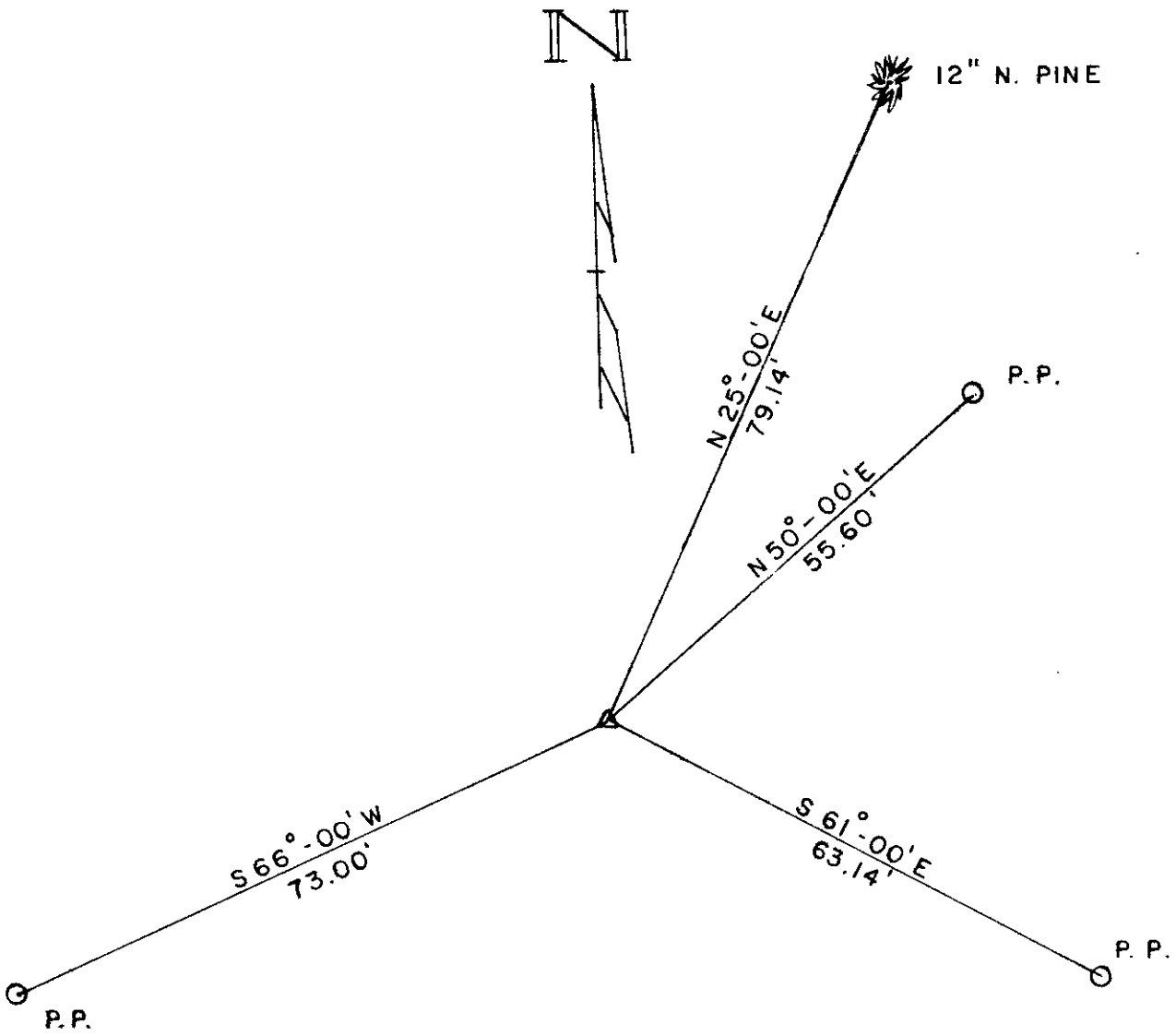
Office of..... County of.....

I hereby certify that the within instrument was filed in this office for record
on the..... day of..... 19....., and was filed in Book
No..... Page No..... of County Records.

Signature..... Title.....

Township....., Range....., Section....., Index No....., Page No.....

E-5



REGISTER OF DEEDS OFFICE
ONEIDA COUNTY, WIS.

FILED

MAY 1 1983

At 4:13 O'Clock P M

DORIS VERAGE KUEHN
REGISTER OF DEEDS

This corner was restored through acceptance of a found perpetuated location. Corner was not established proportionately.

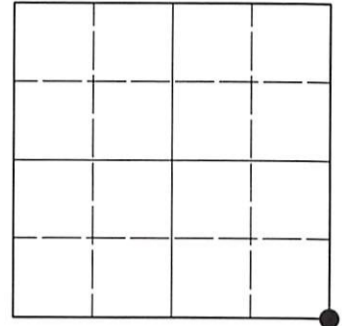


U.S. PUBLIC LAND SURVEY MONUMENT RECORD

Note: This form is intended and designed to fulfill all requirements of Wisconsin Administrative Code, Chapter A-E 7.08 U.S. Public Land Survey Monument Record (3)(a-i).

(a) CORNER LOCATION
 Cor. of Secs. 5, 6, 7 & 8
 Township 38 North
 Range 11 East of the 4th P.M.
 Town of Three Lakes
 County of Oneida

WISCRS - Oneida County
 N: 223,166.41 USft
 E: 329,922.11 USft
 Datum: NAD 83(2011) ep. 2010.00
 GNSS Method: RTN - Direct
 GNSS Control: WISCORS VRS



Sec. 6, T. 38 N., R. 11 E.

(b)(f)(g)(h) Description of monument found at this corner and if it was accepted, state all evidence (material, testimonial, occupational, plats, records, other monuments) used as a basis for accepting. If not accepted or if nothing was found, state evidence used as basis for establishing location. If re-established through lost corner proportionate methods, indicate all monuments, distances and directions used to establish. Indicate type of monument and sign post found or set.

This record is a perpetuation of the following land corner document(s):

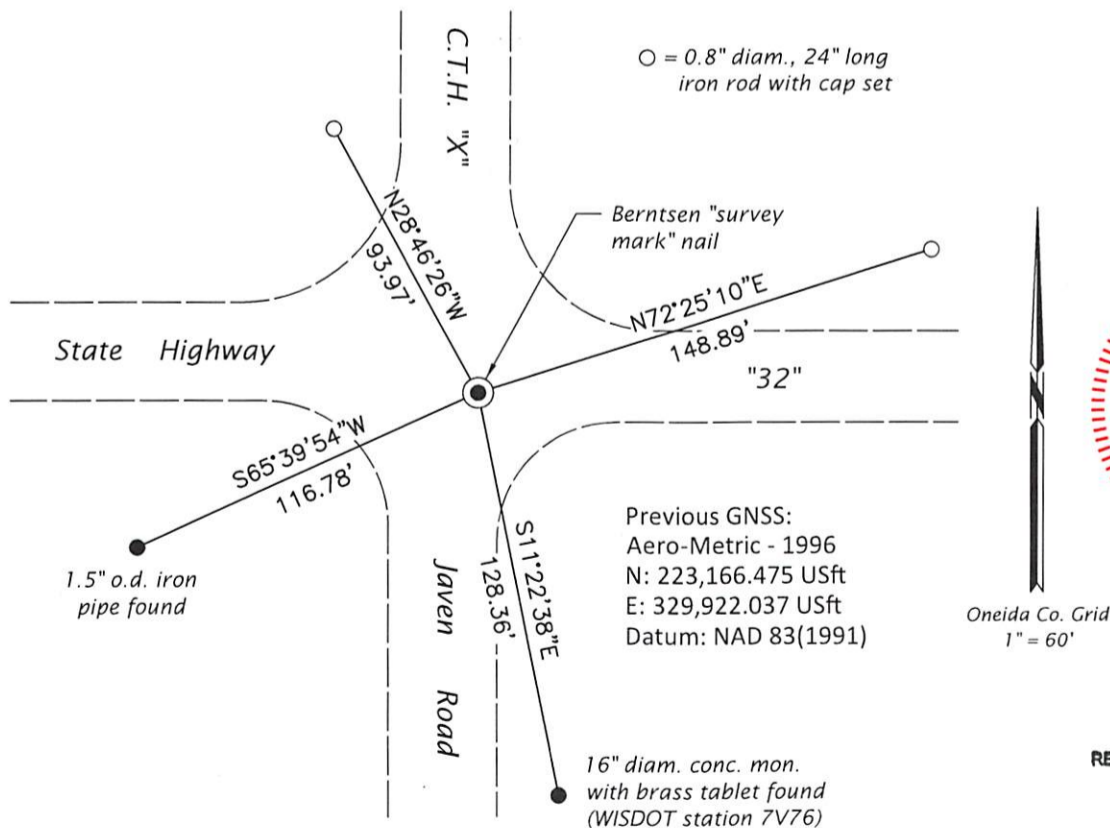
September 30, 1982: USPLS Monument Record by William E. Bandow, filed in Oneida County

A complete history of the corner can be found on the previous land corner document(s). I accept the record activity as a true and faithful perpetuation or reestablishment of the original corner location and further perpetuate it as described below.

July 29, 2021: I found and accepted a Berntsen "survey mark" nail, the location of which agrees favorably with the record GPS observation. All of the record accessories are gone. I found or established accessories as shown below. I found a white vinyl sign post adjacent to the DOT monument.

The coordinate value shown has been verified by at least one of the following methods: 1) comparison to a previously GNSS determined published value; 2) the value is the average of two or more GNSS observations at a markedly different time; 3) one or more distances were measured back to the GNSS observed corner from temporary GNSS observed offset locations.

(c)(d)(e) Plan view of corner with ties to at least 4 witness monuments. If in disagreement with previously established corner, show the distances between the two corners and also indicate the ties to the disputed.



(i) I, Jeffrey W. Austin, Professional Land Surveyor No. S-1885, hereby certify that the corner location on this record was determined by me or under my direction and control and that this U.S. Public Land Survey Monument Record is correct and complete to the best of my knowledge and belief.

[Handwritten Signature]
 Signature

SEP-5, 2021
 Date

REGISTER OF DEEDS OFFICE
 ONEIDA COUNTY
 FILED

SEP 27 2021

KYLE J. FRANSON
 REGISTER OF DEEDS