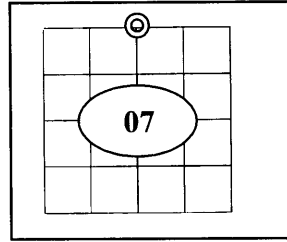




## U.S. PUBLIC LAND SURVEY MONUMENT RECORD

Note: This form is intended and designed to fulfill all requirements of Wisconsin Administrative Code Chapter A-E 7.08 (3) (a-i).

(a) Corner: North 1/4  
 Section: 07  
 Township: 38 N.  
 Range: 11 E.  
 Town: Three Lakes  
 County: Oneida



(b) History of Original Corner

Original Surveyor	William Daugherty	Original B.T.'s	
Date of Survey	1859	14" Birch	N31°W 16 links
		14" Birch	S26°E 17 links

- In 1859 William Daugherty set a wood post as original section corner and made the above ties, all are now obliterated.

(f)(g)(h) Description of monument found at this corner and if it was accepted, state all evidence (material, testimonial, occupational, plats, records, other monuments) used as a basis for establishing location. If reestablished through last corner proportionate methods, indicate all monuments, distances and directions used to establish. Indicate type of monument and signpost found or set.

- In 1997 Kip Soder RLS/ 1731 re-established corner position using existing sub divisional monumentation established by Genisot and Associates and accepted in record survey plats. The Center 1/4 and Center North 1/16<sup>th</sup> corner positions were used. This was necessary due to the position being obliterated during construction of U.S.H. 45.
- In 2003 Kip Soder RLS/ 1731 established the corner position but did not set any monumentation at the corner location. He made note of a Sign post 40' North of corner position. He also made the following ties: 1" dia. Iron pipe S 55°21'19"E, 154.57'; a railroad spike at the center north 1/16<sup>th</sup> corner S 3°27'30"W, 1321.43'; a railroad spike at the center 1/4 corner S 3°27'30"W, 2642.86'; a P.K. Nail S 48°50'30"W, 40.99'; top nut of fire hydrant N 33°18'55"W, 56.16'. As located on tie sheet #(3811060020).
- In summer of 2008 the Highway was re-constructed. In Nov. 2008 I (Allen P. Oleink RLS (S-2619) WI D.O.T.) found all of Soder's reference marks in good shape. I set a survey nail flush with highway pavement, based on record distances from existing ties.

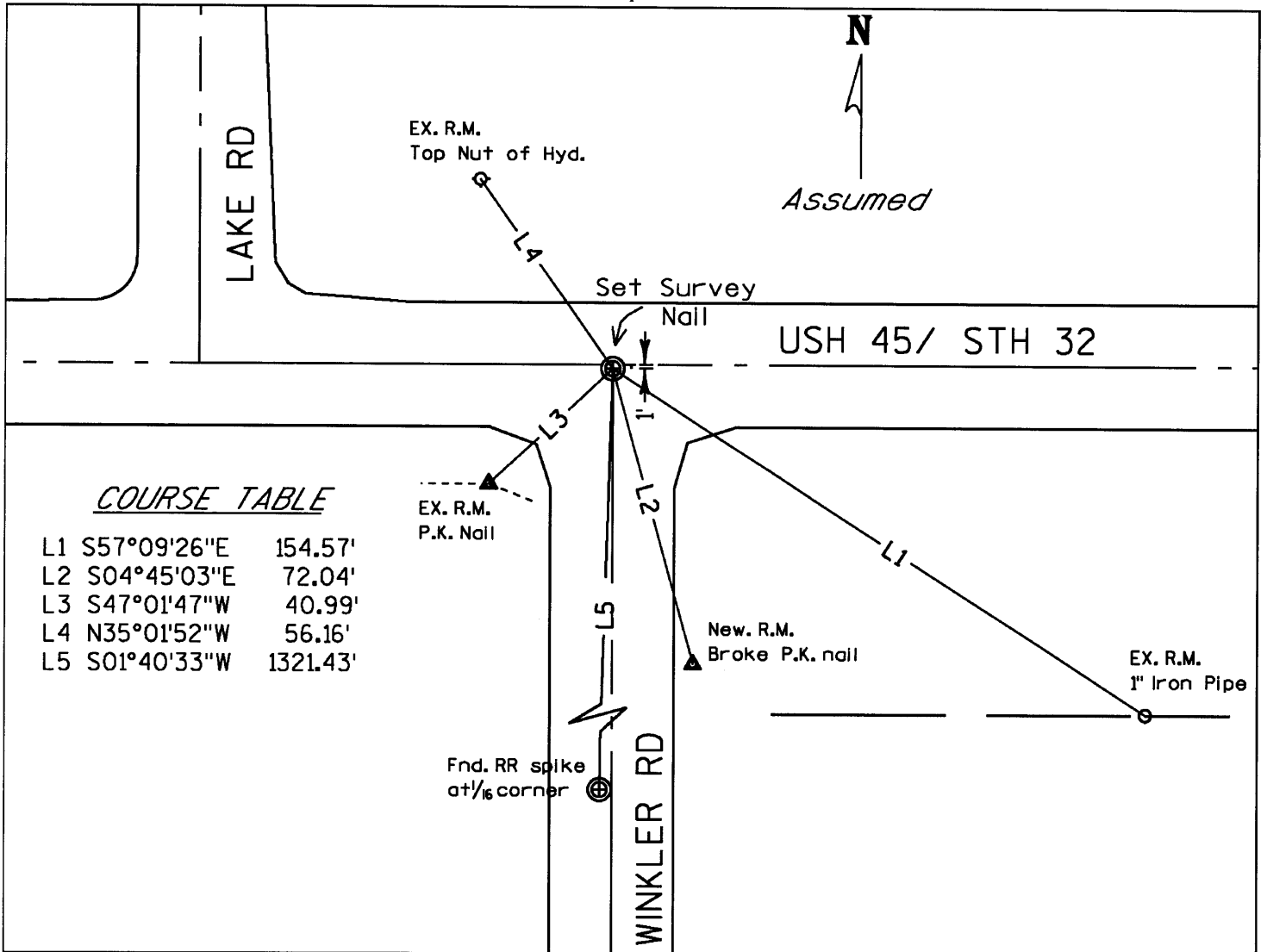
REGISTER OF DEEDS OFFICE  
 ONEIDA COUNTY, WIS.

**FILED**  
 FEB 19 2009

At \_\_\_\_\_ O'Clock \_\_\_\_\_ M  
**THOMAS H. LEIGHTON**  
 REGISTER OF DEEDS

3811060020

(c)(d)(e) Plan view of corner with ties to at least 4 witnesses. If in disagreement with previously established corner, show the distance between the two corners and also indicate the tie to the disputed corner.



(i) I, Allen P Oleinik, Registered Land Surveyor No 2619, hereby Certify that the corner location on this record was referenced by me And that this U.S. Public Land Survey Monument Record is correct and complete to the best of my knowledge and belief.

Allen P. Oleinik 2-17-09  
Signature Date

Index No. E-3

381106 0020

FEB 20 2023

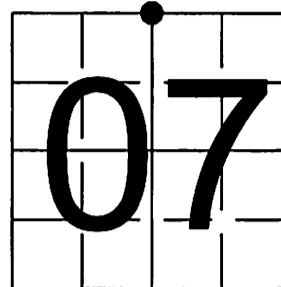
KYLE J. FRAMSON  
REGISTER OF DEEDS

# U S PUBLIC LAND SURVEY MONUMENT RECORD

NOTE: This form is intended and designed to fulfill all requirements of Wisconsin Administrative Code, Chapter A-E 7.08 U.S. Public Land Survey Monument Record (3) (a-l)

A-E 7.08(3)(a) Identity of corner  
NORTH 1/4 CORNER OF SECTION 07  
TOWNSHIP 38 NORTH  
RANGE 11 EAST OF THE 4TH PM  
TOWN OF THREE LAKES  
COUNTY OF ONEIDA

WISCORS - ONEIDA COUNTY  
N: 223,445.10 USft  
E: 327,399.28 USft  
Datum: NAD83 (2011)  
GNSS Method RTN - Direct  
GNSS Control WISCORS VRS



The coordinate value shown has been verified by the average of two or more GPS observations at a markedly different time.

A-E 7.08(3)(b) Description of any record evidence, monument evidence, occupational evidence, testimonial evidence, or any other material evidence.

Original Surveyor: William E. Daugherty

Date of Original Survey Commenced: August 30, 1859  
Completed: September 5, 1859

Original Accessories: See Previous Monument Record:  
Birch 14 N 31° W 16 lks. Index No. 3811060020  
Birch 14 S 26° E 17 lks.

Sept. 24th, 2020 - EMCS located broken survey nail at corner location as part of Transportation Project Number 1600-28-21-4.01 and Recorded as Doc. No. 810831 in Oneida County Register of Deeds.

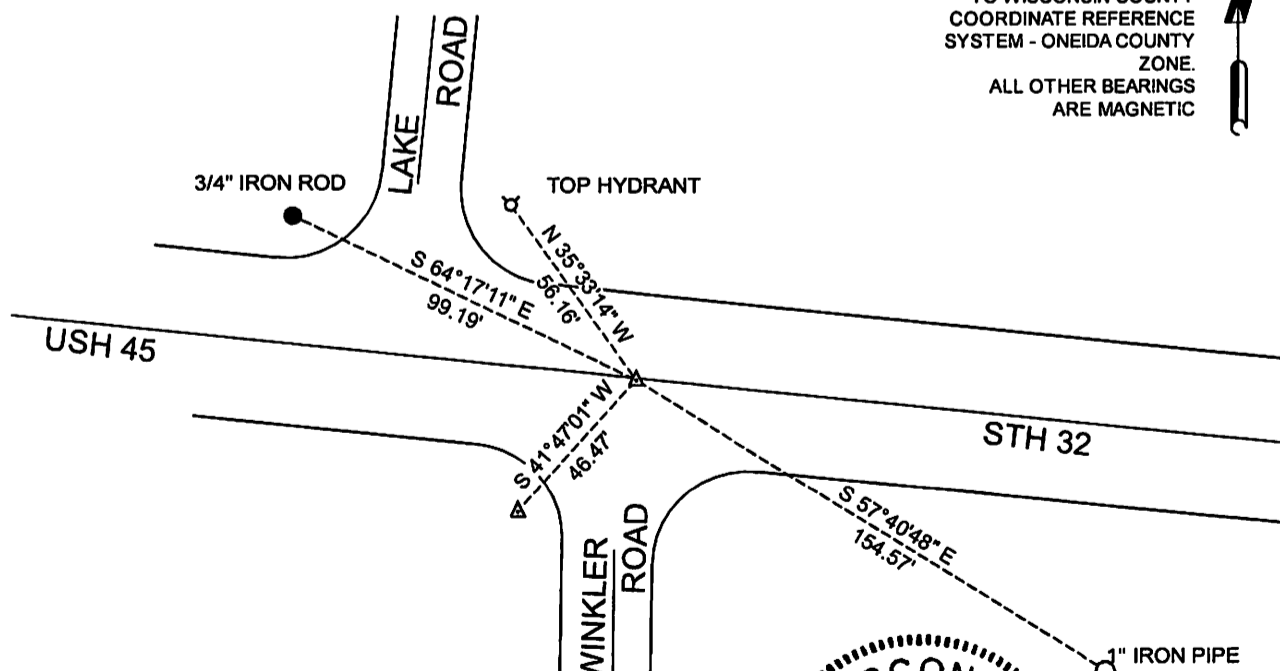
June 28, 2022 - I found broken survey nail and located prior to road construction on USH 45 & STH 32.

A-E 7.08(3)(f) Corner was restored through acceptance of an obliterated location.

Oct 1, 2022 - I reset MAG nail at located corner and made the following references below.

A-E 7.08(3)(c)(d)(e)(h) Plan view of corner with references to at least 4 witness monuments. If in disagreement with previously established corner, show the distances between the two corners and also indicate the ties to the disputed. The directions and distances to other public and survey corners used as evidence or used for determining the corner location.

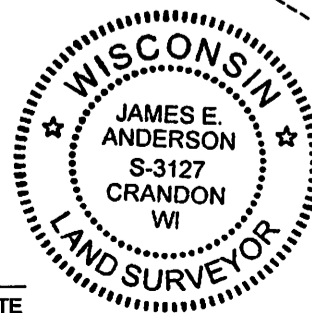
BEARINGS LISTED TO THE  
NEAREST SECOND  
ARE REFERENCED  
TO WISCONSIN COUNTY  
COORDINATE REFERENCE  
SYSTEM - ONEIDA COUNTY  
ZONE.  
ALL OTHER BEARINGS  
ARE MAGNETIC



A-E 7.08(3)(i) I, James E Anderson, Professional Land Surveyor No. S-3127, hereby certify that the corner location on this record was determined by me or under my direction and control and that this U.S. Public Land Survey Monument Record is correct and complete to the best of my knowledge, and belief

*James E Anderson*  
SIGNATURE

Feb 19, 2023  
DATE



E-3  
3811060020