

U.S. PUBLIC LAND SURVEY MONUMENT RECORD

Index No. C. - 5

State of Wisconsin }
County of Oneida } ss.

I, Kip W. Soder, do hereby certify that on the 24th day of April, 1990, I found evidence of the East One-Quarter corner of Section 6 Township 38 North, Range 11 East, Fourth Principal Meridian, as described hereon; and that from this evidence I established a new monument and accessories as described hereon to perpetuate the original location of this corner.

Resident witnesses:

Kip W. Soder

Robert Schneider

History of original corner establishment:

Corner was established by William E. Daugherty in 1859.

Made the following B.T.'s: 6" Tamarack N 45° E 60 lks.
5" Spruce S 60° W 53 lks.

Description of corner evidence found:

Found a 1" I.P. from which the following bear;

12" Tamarack N 87° W 17.87 feet
6" Spruce S 70° E 65.68 feet
6" Tamarack S 25° W 35.25 feet

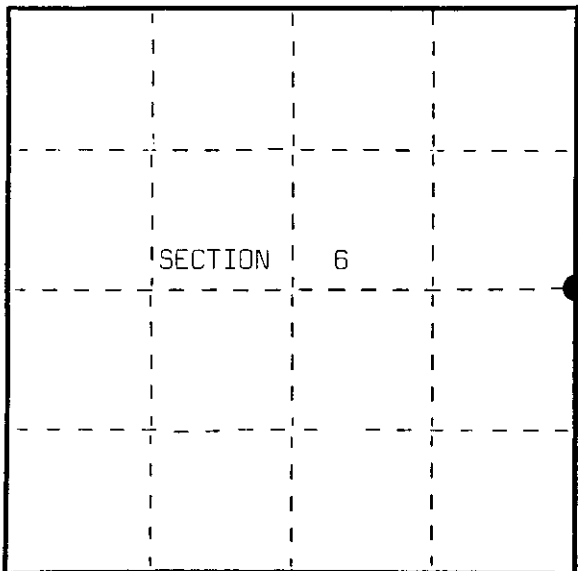
4" dia. wood post Southeast of corner

Description of monument and accessories I established to perpetuate the original location of this corner.

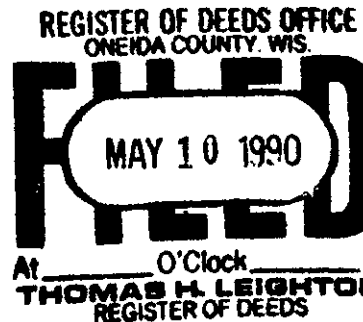
Set a 2 1/2" x 36" Aluminum Oneida County monument stamped to identify corner.

Made the following B.T.; 13" N. Pine N 20° W 114.40 feet

Set plastic Survey marker Southwest 2.5 feet



○ = Corner monument restored.



3811062000

Dated at Three Lakes, Wis., this 26th day of April, 1990

Signature: Kip W. Soder Title: Land Surveyor Registration No. S-1731
(County Surveyor, Registered Land Surveyor, or other duly authorized official)

Office of Register of Deeds, County of Oneida, I hereby certify that the within instrument was filed in this office for record on the 10th day of May, 1990 at 10 o'clock M.

(Register of Deeds)

By: Deputy

FORM NO. 985-A

Miller Company

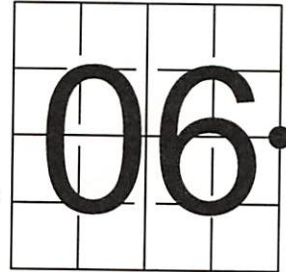
Stock No. 26273

U S PUBLIC LAND SURVEY MONUMENT RECORD

NOTE: This form is intended and designed to fulfill all requirements of Wisconsin Administrative Code, Chapter A-E 7.08 U.S. Public Land Survey Monument Record (3) (a-i)

A-E 7.08(3)(a) Identity of corner
 EAST 1/4 CORNER OF SECTION 06
 TOWNSHIP 38 NORTH
 RANGE 11 EAST OF THE 4TH PM
 TOWN OF THREE LAKES
 COUNTY OF ONEIDA

WISCORS - ONEIDA COUNTY
 N: 225,776.766 USft
 E: 329,909.766 USft
 Datum: NAD83 (2011)
 GNSS Method RTN - Direct
 GNSS Control WISCORS VRS



The coordinate value shown has been verified by the average of two or more GPS observations at a markedly different time.

A-E 7.08(3)(b) Description of any record evidence, monument evidence, occupational evidence, testimonial evidence, or any other material evidence.

REGISTER OF DEEDS OFFICE
 ONEIDA COUNTY
 FILED

Original Surveyor: William E. Daugherty

APR 01 2022

Date of Original Survey Commenced: August 30, 1859
 Completed: September 5, 1859

Original Accessories:
 Tamarac 6 N. 45° E. 60 lks.
 Spruce 5 S. 60° W. 53 lks

See Previous Monument Record:
 Index No. C-5

KYLE J. FRANSON
 REGISTER OF DEEDS

April 24, 1990 - Surveyor 1731 - Kip W. Soder - found a 1" iron pipe, and 3 B.T.'s: 12" Tamarack, N. 87° W., 17.87', 6" Spruce, S.70° E., 65.68', 6" Tamarack, S. 25°W., 35.25'.

Soder set a 2 1/2" x 36" Aluminum Oneida County monument stamped to identify corner, and made one new new B.T.: 13" N. Pine, N. 20° W., 114.40', and set a plastic survey marker Southwest 2.5 feet.

May 1, 1996 - Aero Metric Inc. found and measured an Aluminum Monument at this location.

A-E 7.08(3)(f) Corner was restored through acceptance of an obliterated location.

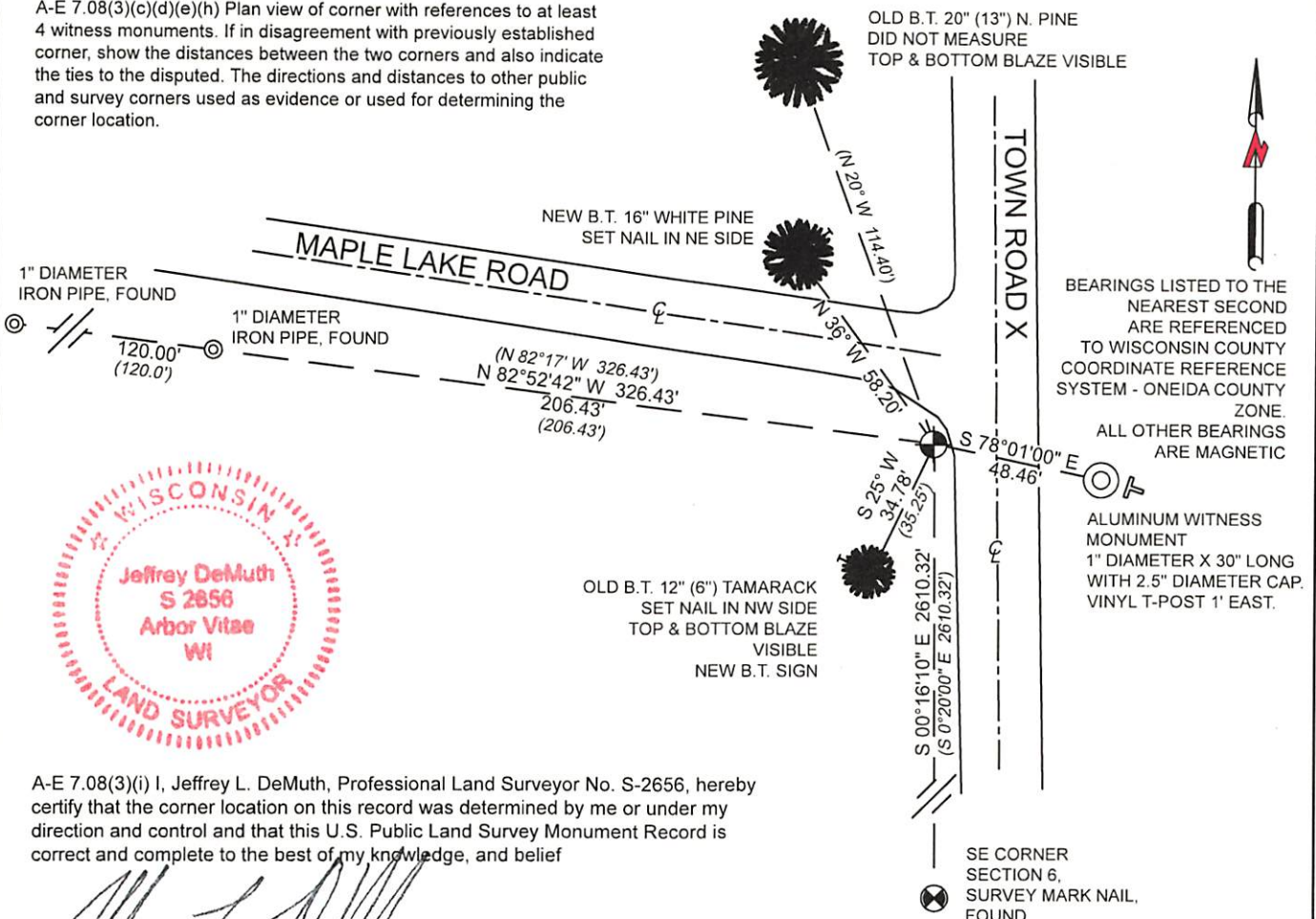
May 26, 2021 - In preparation of a road reconstruction project, I found 2 of Soder's B.T.'s intact as shown below, and one of Soder's B.T.'s being a stump.

I did not find Soder's Aluminum County Monument, and determined the corner to be obliterated.

November 04, 2021 - I returned to the location after road reconstruction and was unable to establish the corner position by existing witnesses. Under the direction of Michael Romportl - Oneida County Land Information Office, I set a 1" X 30" aluminum pipe with a 2 1/2" aluminum cap at the published county coordinate value.

March 31, 2022 - Under the direction of Michael Romportl - Oneida County Land Information Office, I recalculated the corner position using existing monuments from Map: A1197, & C275, as well as the distance from the SE corner of Section 6, and witnessed as shown below.

A-E 7.08(3)(c)(d)(e)(h) Plan view of corner with references to at least 4 witness monuments. If in disagreement with previously established corner, show the distances between the two corners and also indicate the ties to the disputed. The directions and distances to other public and survey corners used as evidence or used for determining the corner location.



A-E 7.08(3)(i) I, Jeffrey L. DeMuth, Professional Land Surveyor No. S-2656, hereby certify that the corner location on this record was determined by me or under my direction and control and that this U.S. Public Land Survey Monument Record is correct and complete to the best of my knowledge, and belief

Jeffrey L. DeMuth
 SIGNATURE

March 31, 2022

DATE

43811062000