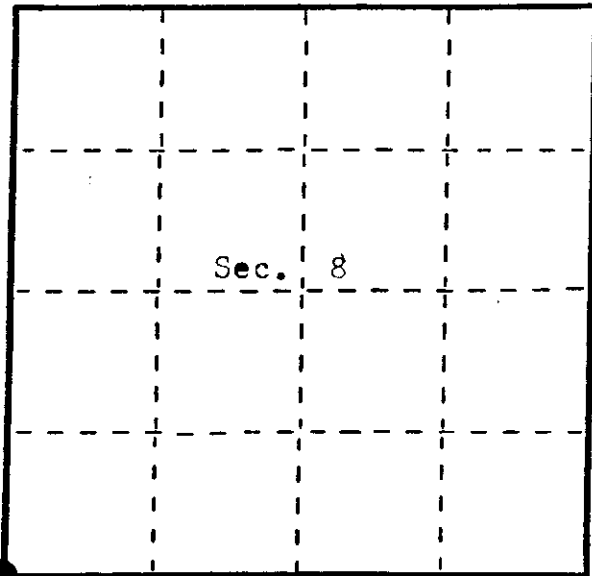


State of Wisconsin }
County of Oneida } ss.

I, James L. Will, do hereby certify that on the 7th day of November, 19.84, I found evidence of the Southwest corner of Section 8 Township 38 North, Range 11 East, Fourth Principal Meridian, as described hereon; and that from this evidence I established a new monument and accessories as described hereon to perpetuate the original location of this corner.

Resident witnesses:

Kip Soder



● = Corner monument restored.

U. S. Public Land Survey Monument Record

Index No. J-5

History of original corner establishment:

Original corner was established during the course of the subdivision of T 38 N, R 11 E which was started and completed in 1859 by William M. Daugherty, Deputy Surveyor. Subdivision was started Aug. 30, 1859 and completed Sept. 5, 1859.

Original P.M.'s:

8" Hemlock S 55° W 8 lks.
9" Fir N 20° E 9 lks.

Description of corner evidence found:

Found Railroad spike in intersection of two Town Roads which has been used in previous surveys as the Southwest corner of Section 8.

Found the following bearing trees in place:

7" Aspen S 27 W 66.90 feet to nail in side.
12" Maple S 50 E 43.94 feet to nail in side.

Description of monument and accessories I established to perpetuate the original location of this corner.

Set two one inch reference pipe and used an iron pipe in place as a reference as shown in sketch on reverse.

Dated at Eagle River, Wis., this 15th day of November, 19.84.

Signature *James L. Will* Title Reg. Land Surveyor Registration No. 1410
(County Surveyor, Registered Land Surveyor, or other duly authorized official)

Office of Register of Deeds, County of _____, I hereby certify that the within instrument was filed in this office for record on the _____ day of _____, 19____ at _____ o'clock _____ M.

(Register of Deeds)

By _____ Deputy

3811070000

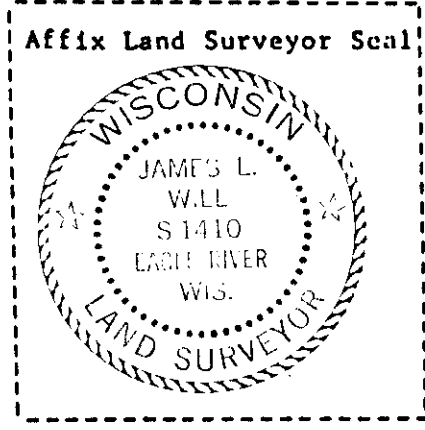
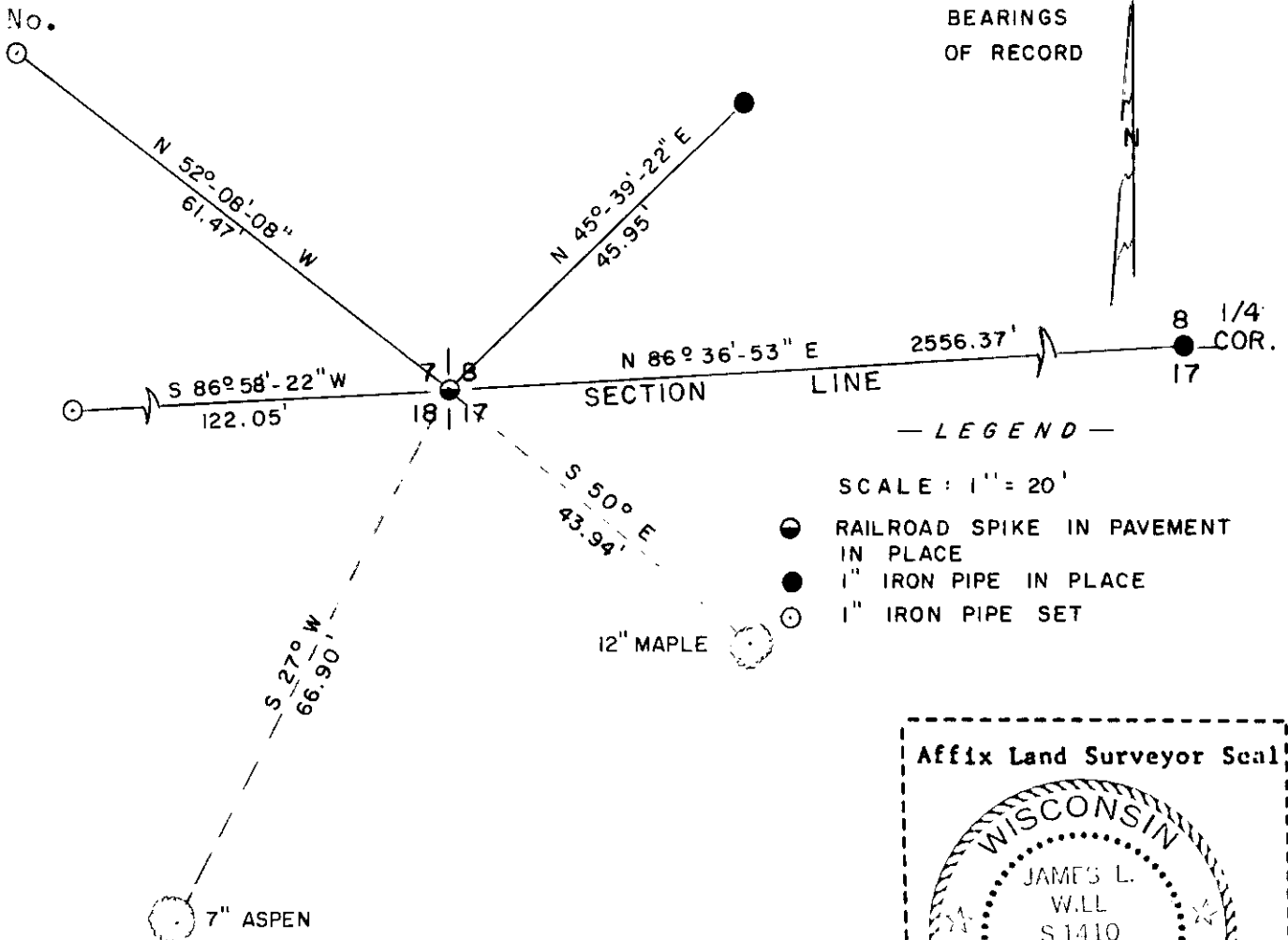
Describe any material discrepancy between the location of the corner as restored or reestablished and the location of that corner as previously restored or reestablished by distance and direction. Show the discrepancy on the plan view drawing under (d), above. Show the distances between the corner as previously restored or reestablished and (1) the corner as restored or reestablished, and (2) to at least 2 of the witness monuments shown on the drawing in (d), above.

None.

Was the corner restored through acceptance of (1) an obliterated evidence location, or, (2) a found perpetuated location?

Corner was restored through acceptance of a found perpetuated location.

Was the corner reestablished through lost corner proportionate methods? If so, show the method, including the directions and distances to other public land survey corners used as evidence or used for proportioning in determining the corner location?



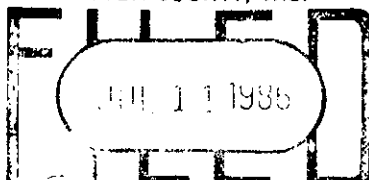
James L. Will, R.L.S. #1410

(type or print name) certify that the corner location shown on this record was determined by me or under my direction and control and that this U.S. Public Land Survey Monument Record is correct and complete to the best of my knowledge and belief.

James L. Will
 Signature

November, 15, 1984
 Date

REGISTER OF DEEDS OFFICE
 ONEIDA COUNTY, WIS.



At... O'Clock... M
 DORIS VERAGE KUEHN
 REGISTER OF DEEDS

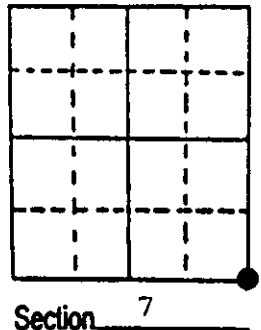
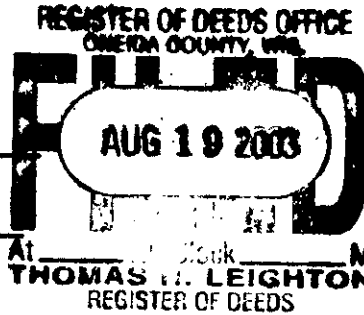
U.S. PUBLIC LAND SURVEY MONUMENT RECORD

Note: This form is intended and designed to fulfill all requirements of Wisconsin Administrative Code, Chapter A-E 7.08 U.S. Public Land Survey Monument Record (3) (a) (b) (c) (d) (e) (f) (g) (h) (i). An additional sheet may be added if necessary to conform with said requirements.

(a) Corner location: Township 38 North
 Range 11 East/West

Town/City/Village THREE LAKES

County ONEIDA



Section 7

(b) (f) (g) (h) Description of monument found at this corner and if it was accepted, state all evidence (material, testimonial, occupational, plats, records, other monuments) used as a basis for accepting. If not accepted or if nothing was found, state evidence used as basis for establishing location. If reestablished through lost corner proportionate methods, indicate all monuments, distances and directions used to establish. Indicate type of monument found or set and sign post.

1859 - Daugherty - set post.

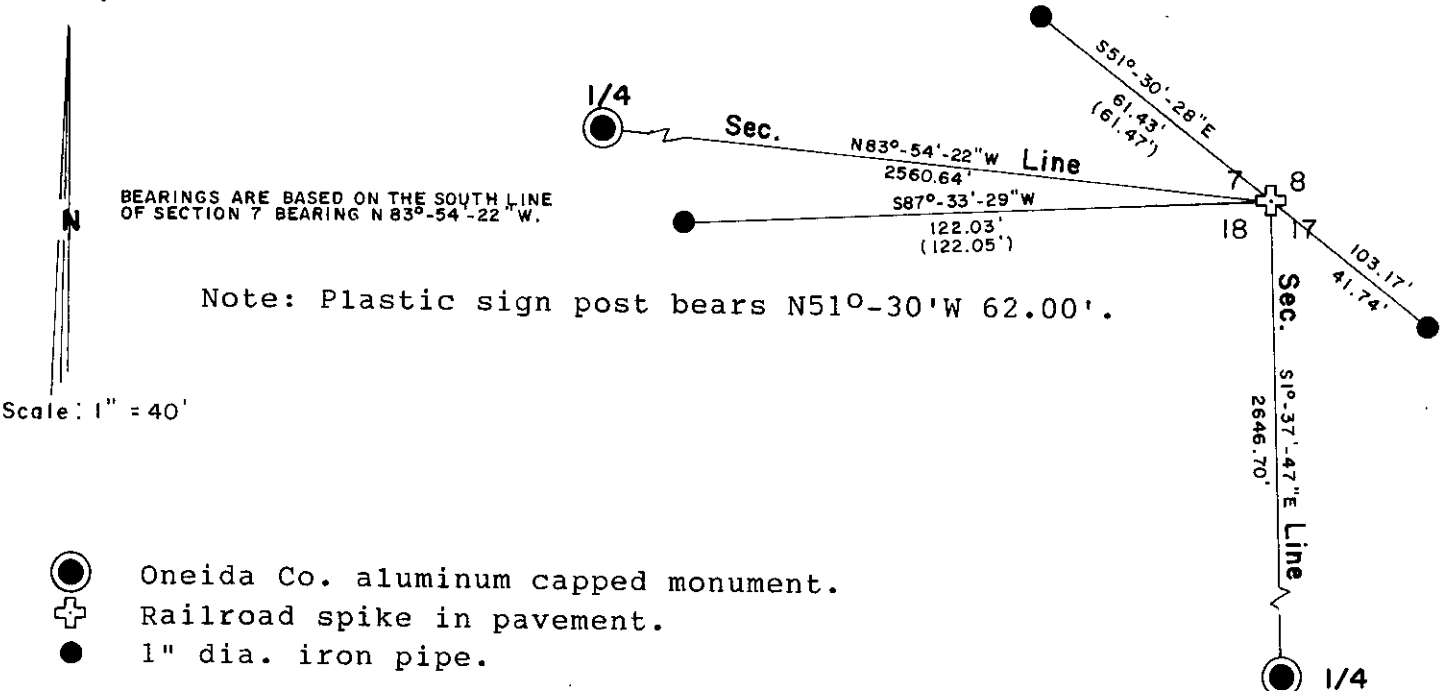
Original B.T.'s Hemlock 8" S55°W 8 lks.
 Fir 9" N20°E 9 lks.

1985 - James Will - U.S. P.L.S. monument record on file. Finds Railroad spike at corner position along with bearing trees. Makes new ties and submits corner form.

1985 - 2003 Railroad spike at corner position used in several surveys of record.

2003 - Soder - Pinned off corner position and replaced with new Railroad spike after road construction was completed. Set new tie and re-tied existing monumentation.

(c) (d) (e) Plan view of corner with ties to at least 4 witness monuments. If in disagreement with previously established corner, show the distances between the two corners and also indicate the ties to the disputed corner.



- Oneida Co. aluminum capped monument.
- ⊕ Railroad spike in pavement.
- 1" dia. iron pipe.

(i) I, Kip W. Soder R.L.S. #1731
 (type or print name) certify that the corner location on this record was determined by me or under my direction and control and that this U.S. Public Land Survey Monument Record is correct and complete to the best of my knowledge and belief.

Kip W. Soder Signature 7/31/03 Date



Stamp

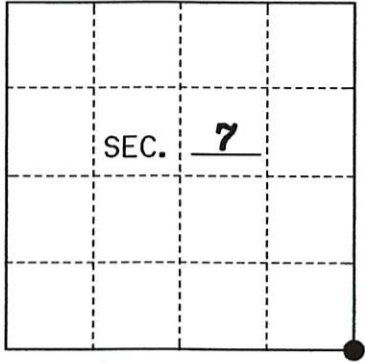
3811070000

Index No. 5-5

U.S. PUBLIC LAND SURVEY MONUMENT RECORD

Note: This form is intended and designed to fulfill all requirements of Wisconsin Administrative Code, Chapter A-E 7.08 U.S. Public Land Monument Record (3)(a)(b)(c)(d)(e)(f)(g)(h)(i). An additional sheet may be added if necessary to conform with said requirements. Deeds Square

(a) CORNER LOCATION: SOUTHEAST
 SECTION 7 Corner of Section 7
 Township 38 North, Range 11 East
 Township/City THREE LAKES
 County of ONEIDA



REGISTER OF DEEDS OFFICE
 ONEIDA COUNTY
 FILED

JAN 22 2021

 KYLE J. FRANSON
 REGISTER OF DEEDS

(b) HISTORY OF ORIGINAL ESTABLISHMENT
 Original Surveyor: WILLIAM E. DAUGHERTY
 Date of Survey: 1859
 Original B.T.'s: 8" HEMLOCK S55°W 8 LKS.
9" FIR N20°E 9 LKS.

County or State Plane Coordinates
 Northing 217873.092'
 Easting 329791.625'
 Datum Base WISCORS-ONEIDA GRID

NAD 83 (2011)

The coordinate values shown have been determined by the average of multiple RTK GPS observations taken initially and returning to the site on a different day at a different time and taking additional multiple RTK GPS observations and averaging those with the initial observations.

(b)(f)(g)(h) Description of monument found at this corner and if it was accepted, state all evidence (material, testimonial, occupational, plats, records, other monuments) used as a basis for accepting. If not accepted or if nothing was found, state evidence used as basis for establishing location. If reestablished through lost corner proportionate methods, indicate all monuments, distances and directions used to establish. Indicate type of monument and sign post found or set.

As part of an Oneida County Land Information Office contract to preserve Public Land Survey System corners in roadways that may be obliterated due to road resurfacing, I have performed the following corner maintenance as described below:

November, 1984: James Will finds railroad spike at the intersection of 2 Town Roads that has been used in previous surveys in Section 8.

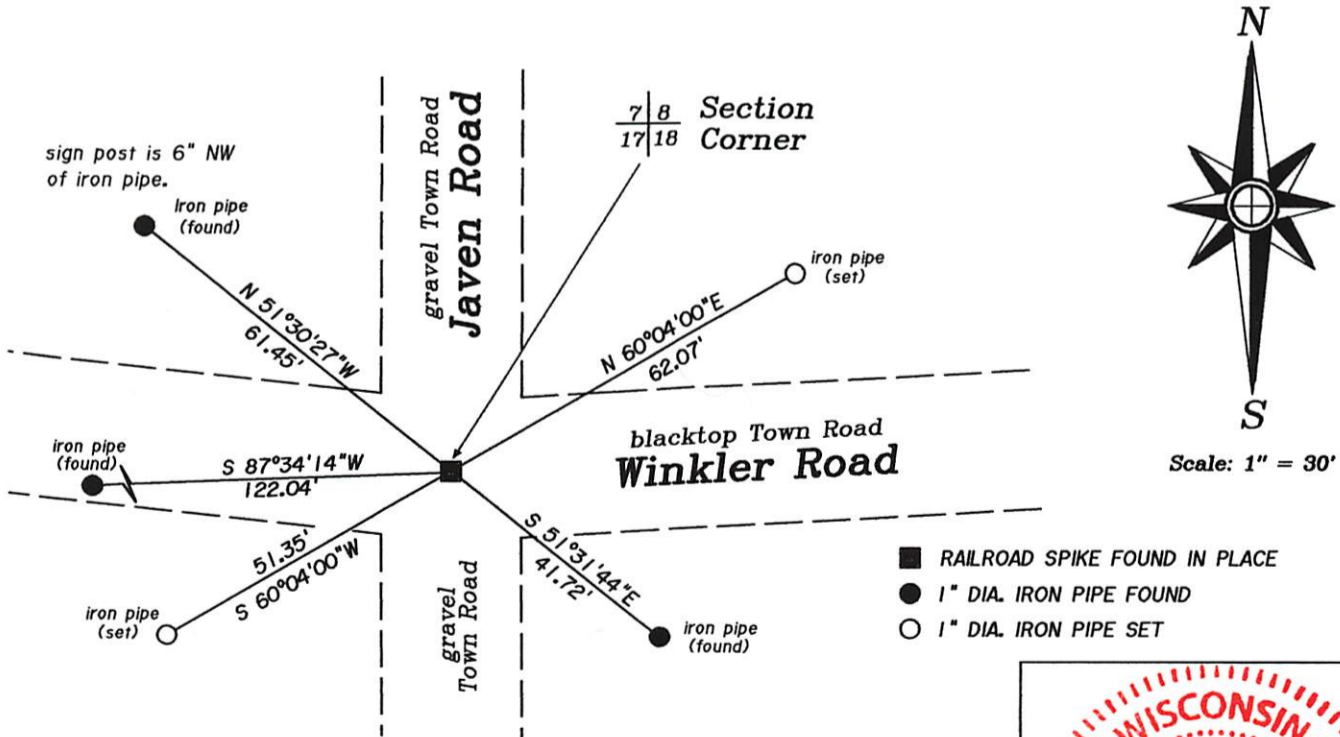
7-31-2003: Kip W. Soder replaces railroad spike at the intersection of 2 Town Roads after road construction per a U.S Public Land Survey Monument Record by James Will completed in 1984.

*Recovered 2 iron pipe reference monuments: S 87°33'29"W 122.03' and N 51°30'28"W 61.43'.
 Set iron pipe reference monuments: S 51°30'28"E 41.74'.*

June, 2019: Thomas Boettcher of Eagle Landmark Surveying finds a railroad spike 2' south of the centerline of the east-west road and in the centerline of the north-south road with the following ties as shown below.

December 21, 2020: I, Thomas Boettcher, returned to the site and found the railroad spike in place. I checked the witnesses as shown below and took a series of RTK GPS observations to average with the initial observations taken in June of 2019.

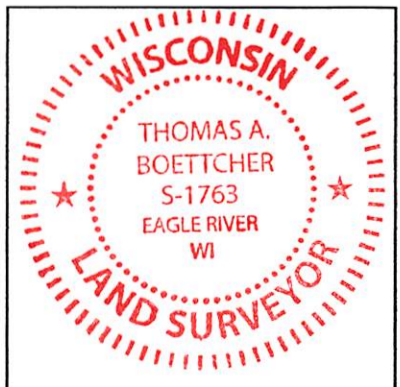
(c)(d)(e) Plan view of the corner with ties to at least 4 witness monuments. If in disagreement with previously established corner, show the distances between the two corners and also indicate the ties to the disputed.



(i) I, Thomas A. Boettcher P.L.S. No. 1763

hereby certify that the corner location on this record was determined by me or under my direction and control and that this U.S. Public Land Survey Monument Record is correct and complete to the best of my knowledge and belief.

Signature *Thomas A. Boettcher* Date December 21, 2020



Index No. 381070000

U.S. PUBLIC LAND SURVEY MONUMENT RECORD

REGISTER OF DEEDS OFFICE
ONEIDA COUNTY
FILED

Note: This form is intended and designed to fulfill all requirements of the Wisconsin Administrative Code, Chapter A-E 7.08 U.S. Public Land Monument Record (3)(a)(b)(c)(d)(e)(f)(g)(h)(i). An additional sheet may be added if necessary to conform with said requirements.

MAR 14 2022

KYLE J. FRANSON
REGISTER OF DEEDS

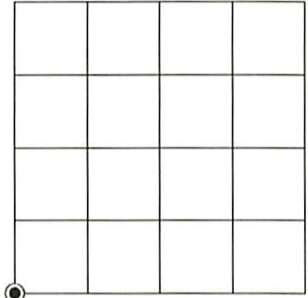
(a) CORNER LOCATION:

Southwest Corner of Section 8
Township 38 North
Range 11 East
Town of Three Lakes
County of Oneida

North:
East:
Datum:
GNSS Method:
GNSS Control:

(RECORDING AREA)

SECTION 8



(b) HISTORY OF ORIGINAL CORNER ESTABLISHMENT

Original Surveyor:
Date of Survey: Commenced
Completed
Original B.T.'S

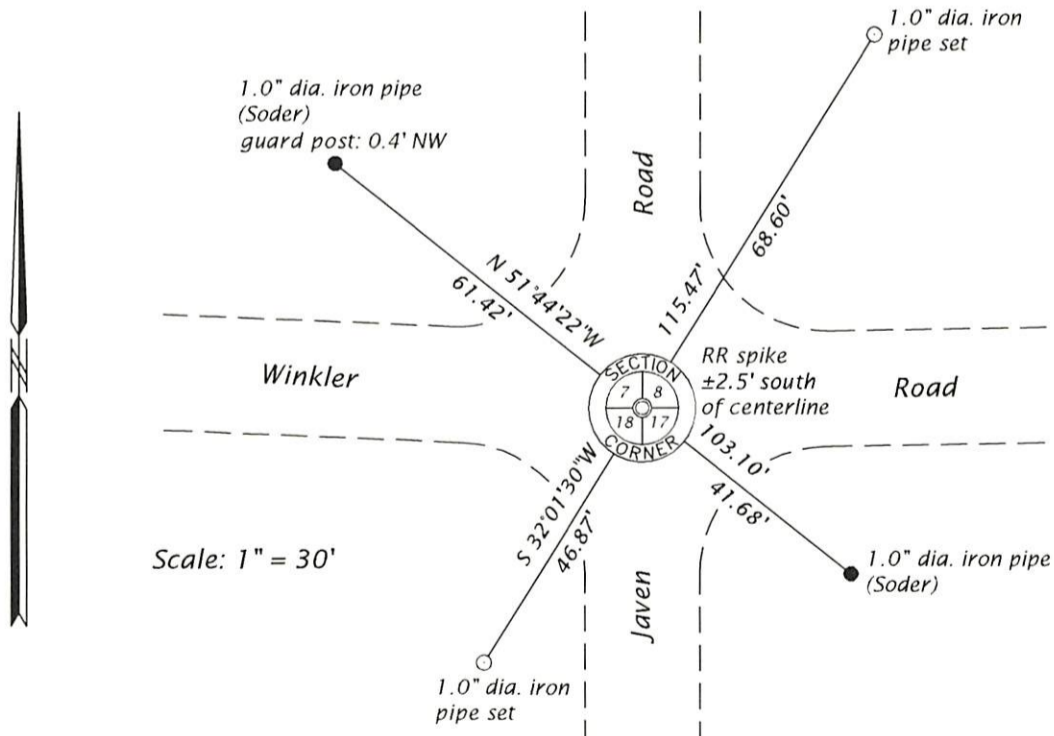
SEE PREVIOUS U.S.P.L.S. MONUMENT
RECORD DATED JULY 31, 2003.

(f)(g)(h) DESCRIPTION OF MONUMENT FOUND AT THIS CORNER AND IF IT WAS ACCEPTED, STATE ALL EVIDENCE (MATERIAL, TESTIMONIAL, OCCUPATIONAL, PLATS, RECORD, OTHER MONUMENTS) USED AS A BASIS FOR ESTABLISHING LOCATION. IF NOT ACCEPTED OR IF NOTHING WAS FOUND, STATE EVIDENCE USED AS BASIS FOR ESTABLISHING LOCATION. IF REESTABLISHED THROUGH LOST CORNER PROPORTIONATE METHODS, INDICATE ALL MONUMENTS, DISTANCES AND DIRECTIONS USED TO ESTABLISH. INDICATE TYPE OF MONUMENT AND SIGN POST FOUND OR SET.

This is a perpetuation of a previous U.S.P.L.S. Monument Record by Kip W. Soder, RLS, dated July 31, 2003, and filed in the office of the Oneida County Register of Deeds. A complete history of the corner can be found on the previous monument record. I accept the previous location as a true and faithful perpetuation or reestablishment of the original corner location and further perpetuate it as follows.

December 11, 2020, I, James D. Rein, P.L.S. No. S-1234, we found the railroad spike set by Soder in 2003. We also recovered his northwesterly and southeasterly witness iron pipes. We set two additional iron pipe witnesses - see below for updated ties.

(c)(d)(e) PLAN VIEW OF CORNER WITH TIES TO AT LEAST 4 WITNESS MONUMENTS. IF IN DISAGREEMENT WITH PREVIOUSLY ESTABLISHED CORNER, SHOW THE DISTANCE BETWEEN THE TWO CORNERS AND ALSO INDICATE THE TIES TO THE DISPUTED CORNER.



(i) I, JAMES D. REIN, PROFESSIONAL LAND SURVEYOR NO. S-1234 HEREBY CERTIFY THAT THE CORNER LOCATION ON THIS RECORD WAS DETERMINED BY ME OR UNDER MY DIRECTION AND CONTROL AND THAT THIS U.S. PUBLIC LAND SURVEY MONUMENT RECORD IS CORRECT AND COMPLETE TO THE BEST OF MY KNOWLEDGE AND BELIEF.

James D. Rein

3-10-22

SIGNATURE

DATE



INDEX NO. J - 5
3811070000