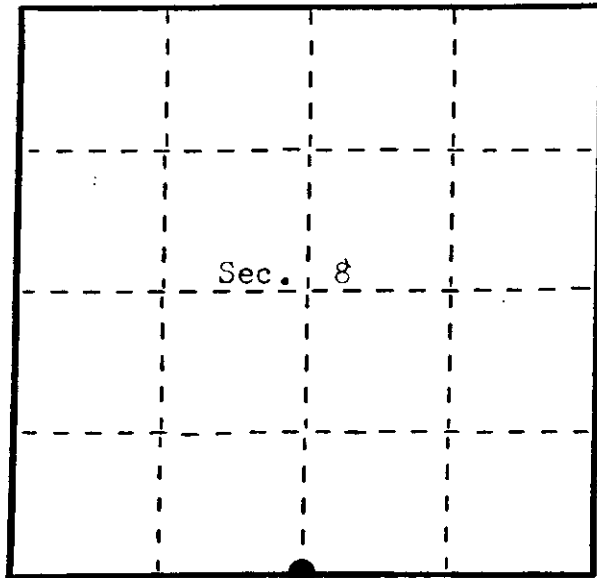


State of Wisconsin }  
County of Oneida } ss.

I, James L. Will, do hereby certify that on the 7th day of November, 1984, I found evidence of the South 1/4 corner of Section 8 Township 38 North, Range 11 East, Fourth Principal Meridian, as described hereon; and that from this evidence I established a new monument and accessories as described hereon to perpetuate the original location of this corner.

Resident witnesses:

Kip Soder



● = Corner monument restored.

## U. S. Public Land Survey Monument Record

Index No. J-7

### History of original corner establishment:

Original corner was established during the course of the subdivision of T 38 N, R 11 E, which was started and completed in 1859 by William E. Daugherty, Deputy Surveyor. Subdivision was started Aug. 30, 1859 and completed Sept. 5, 1859.

### Original B.T.'s:

8" Tamarack N 13° W 11 lks.  
7" Spruce S 44° E 15 lks.

### Description of corner evidence found:

Found 1" dia. iron pipe in center line of intersection of two Town Roads, which has been used in previous surveys as the South 1/4 of said Section 8.

### Description of monument and accessories I established to perpetuate the original location of this corner.

Used iron pipe as the corner since it was in good shape and referenced it off with four 1" dia. iron pipe as shown on drawing on reverse side of this form.

Dated at Eagle River, Wis., this 14th day of November, 1984.

Signature *James L. Will* Title Reg. Land Surveyor Registration No. 1410  
(County Surveyor, Registered Land Surveyor, or other duly authorized official)

Office of Register of Deeds, County of \_\_\_\_\_, I hereby certify that the within instrument was filed in this office for record on the \_\_\_\_\_ day of \_\_\_\_\_, 19\_\_\_\_ at \_\_\_\_\_ o'clock \_\_\_\_\_ M.

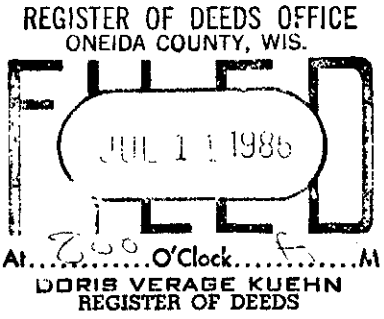
(Register of Deeds)

By \_\_\_\_\_ Deputy

3811080020

Describe any material discrepancy between the location of the corner as restored or reestablished and the location of that corner as previously restored or reestablished by distance and direction. Show the discrepancy on the plan view drawing under (d), above. Show the distances between the corner as previously restored or reestablished and (1) the corner as restored or reestablished, and (2) to at least 2 of the witness monuments shown on the drawing in (d), above.

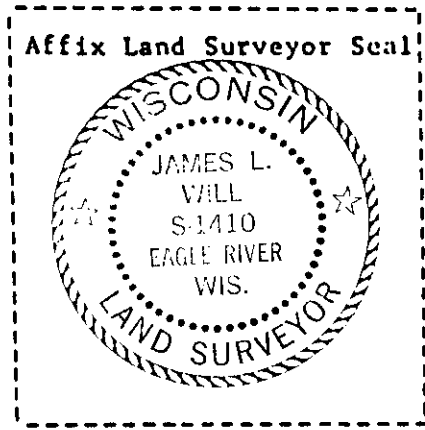
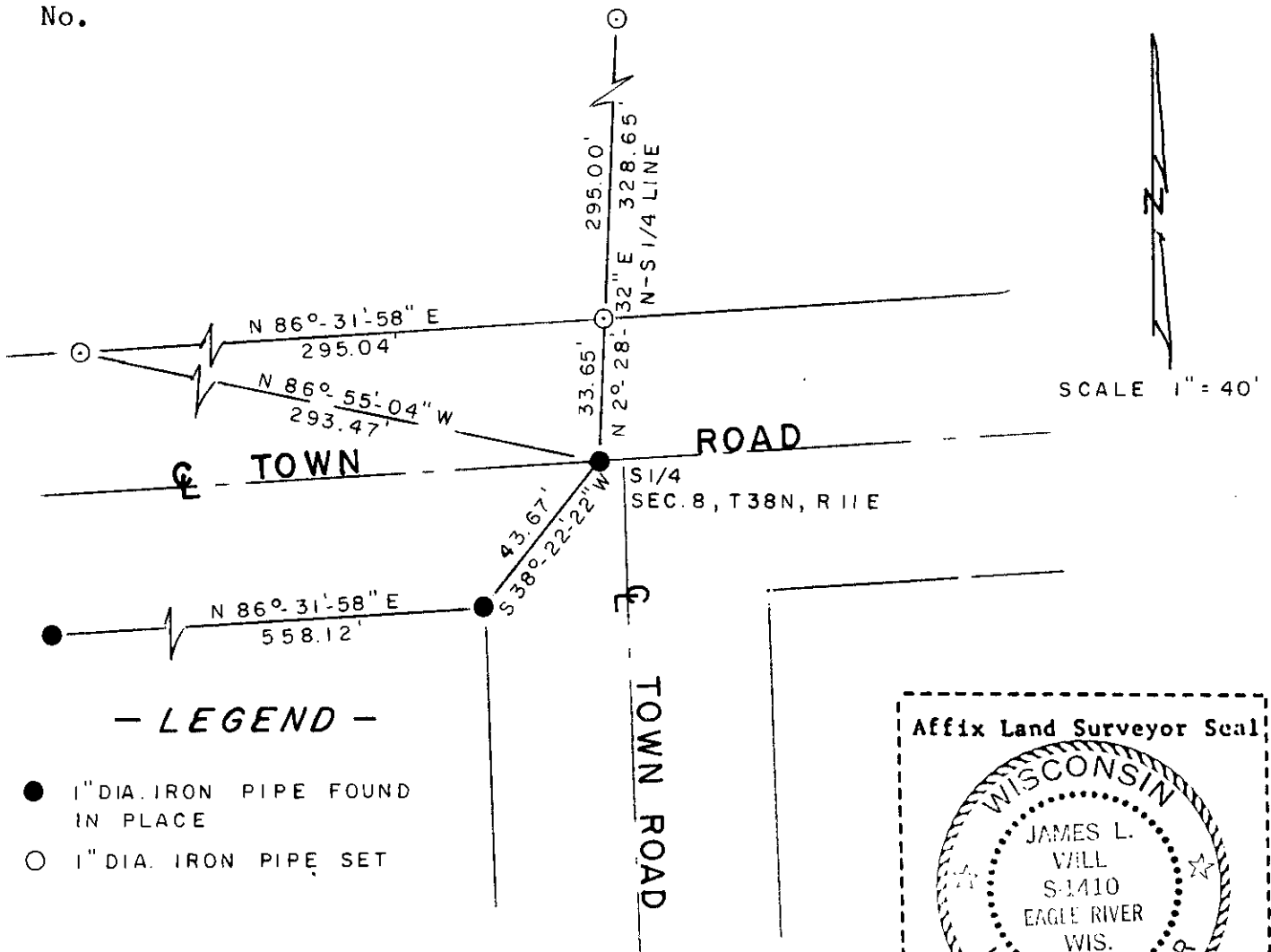
None.



Was the corner restored through acceptance of (1) an obliterated evidence location, or, (2) a found perpetuated location?  
Corner was restored through acceptance of a found perpetuated location.

Was the corner reestablished through lost corner proportionate methods? If so, show the method, including the directions and distances to other public land survey corners used as evidence or used for proportioning in determining the corner location?

No.



I, James L. Will, R.L.S. # 1410  
(Type or print name) certify that the corner location shown on this record was determined by me or under my direction and control and that this U.S. Public Land Survey Monument Record is correct and complete to the best of my knowledge and belief.

James L. Will  
Signature

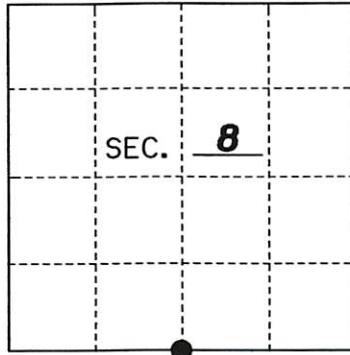
November 14, 1984  
Date



# U.S. PUBLIC LAND SURVEY MONUMENT RECORD

Note: This form is intended and designed to fulfill all requirements of Wisconsin Administrative Code, Chapter A-E 7.08 U.S. Public Land Monument Record (3)(a)(b)(c)(d)(e)(f)(g)(h)(i). An additional sheet may be added if necessary to conform with said requirements. Deeds Square

(a) CORNER LOCATION: South 1/4  
 \_\_\_\_\_ Corner of Section 8  
 Township 38 North, Range 11 East  
 Township/City Three Lakes  
 County of Oneida



REGISTER OF DEEDS OFFICE  
ONEIDA COUNTY  
FILED

JAN 22 2021

KYLE J. FRANSON  
REGISTER OF DEEDS

(b) HISTORY OF ORIGINAL ESTABLISHMENT  
 Original Surveyor: William E. Daugherty  
 Date of Survey: 1859  
 Original B.T.'s: 8" Tamarack N13°W 111 lks.  
7" Spruce S44°E 151 lks.

The coordinate values shown have been determined by the average of multiple RTK GPS observations taken initially and returning to the site on a different day at a different time and taking additional multiple RTK GPS observations and averaging those with the initial observations.

County or State Plane Coordinates  
 Northing 218006.568'  
 Easting 332344.461'  
 Datum Base WISCORS-ONEIDA GRID

NAD 83 (2011)

(b)(f)(g)(h) Description of monument found at this corner and if it was accepted, state all evidence (material, testimonial, occupational, plats, records, other monuments) used as a basis for accepting. If not accepted or if nothing was found, state evidence used as basis for establishing location. If reestablished through lost corner proportionate methods, indicate all monuments, distances and directions used to establish. Indicate type of monument and sign post found or set.

*As part of an Oneida County Land Information Office contract to preserve Public Land Survey System corners in roadways that may be obliterated due to road resurfacing, I have performed the following corner maintenance as described below:*

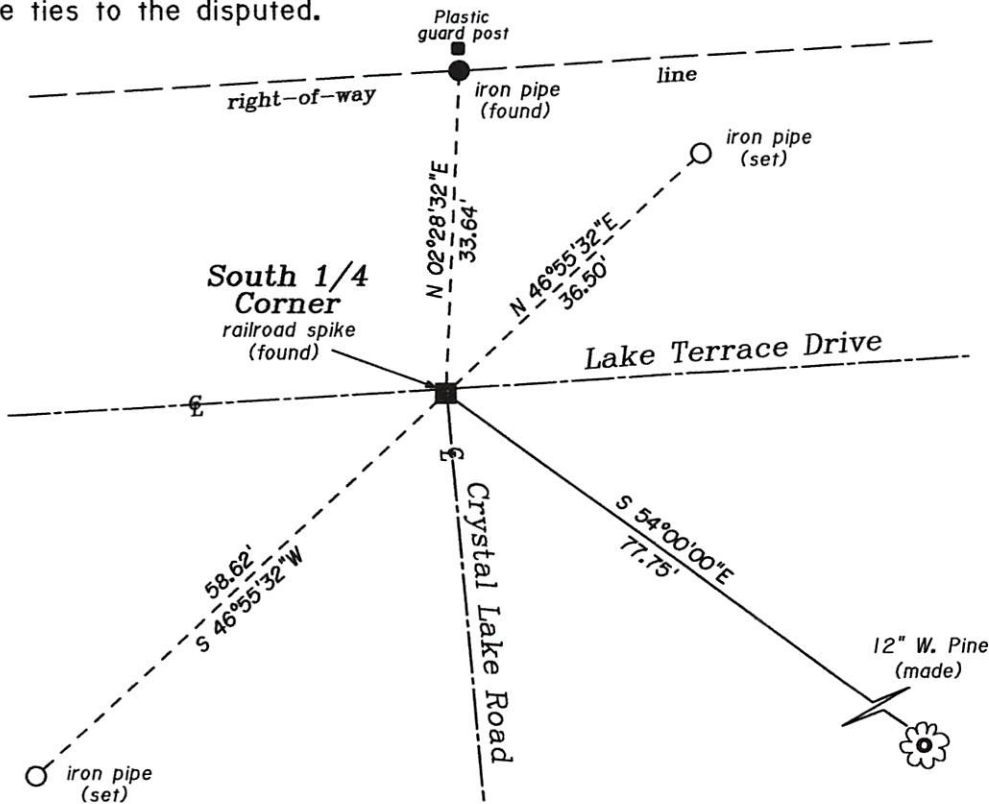
*1984: James Will finds an iron pipe in the pavement of the Town Road and files a U.S.P.L.S Monument Record with Oneida County.*

*May, 2004: Kip W. Soder sets a railroad spike at the location of the iron pipe using the corner ties from James Will's U.S.P.L.S. Monument Record after road construction.*

*June, 2019: Thomas Boettcher of Eagle Landmark Surveying finds the railroad spike in the pavement of the Town Roads 2' North of the east-west centerline and in the centerline of the north-south Town Road with the following reference ties as shown below.*

*December 21, 2020: I, Thomas Boettcher, returned to the site and found the railroad spike in place. I checked the witnesses as shown below and took a series of RTK GPS observations to average with the former GPS observations taken previously.*

(c)(d)(e) Plan view of the corner with ties to at least 4 witness monuments. If in disagreement with previously established corner, show the distances between the two corners and also indicate the ties to the disputed.



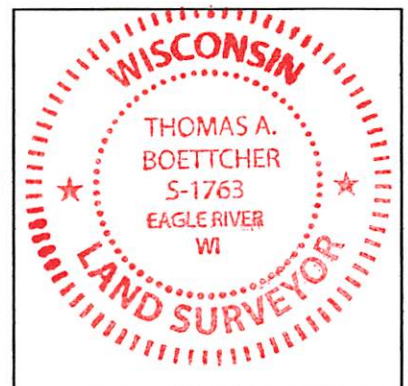
Scale: 1" = 20'

B.T.'S ARE MEASURED TO A NAIL  
IN SIDE OF TREE

(i) I, Thomas A. Boettcher P.L.S. No. 1763

hereby certify that the corner location on this record was determined by me or under my direction and control and that this U.S. Public Land Survey Monument Record is correct and complete to the best of my knowledge and belief.

Signature \_\_\_\_\_ Date December 21, 2020



Index No. 3811080020

# U.S. PUBLIC LAND SURVEY MONUMENT RECORD

REGISTER OF DEEDS OFFICE  
ONEIDA COUNTY  
FILED

MAR 14 2022

Note: This form is intended and designed to fulfill all requirements of the Wisconsin Administrative Code, Chapter A-E 7.08 U.S. Public Land Monument Record (3)(a)(b)(c)(d)(e)(f)(g)(h)(i). An additional sheet may be added if necessary to conform with said requirements.

KYLE J. FRANSON  
REGISTER OF DEEDS

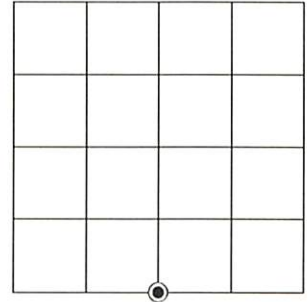
**(a) CORNER LOCATION:**

South Quarter Corner of Section 8  
Township 38 North  
Range 11 East  
Town of Three Lakes  
County of Oneida

North:  
East:  
Datum:  
GNSS Method:  
GNSS Control:

(RECORDING AREA)

SECTION 8



**(b) HISTORY OF ORIGINAL CORNER ESTABLISHMENT**

Original Surveyor:  
Date of Survey: Commenced  
Completed  
Original B.T.'S

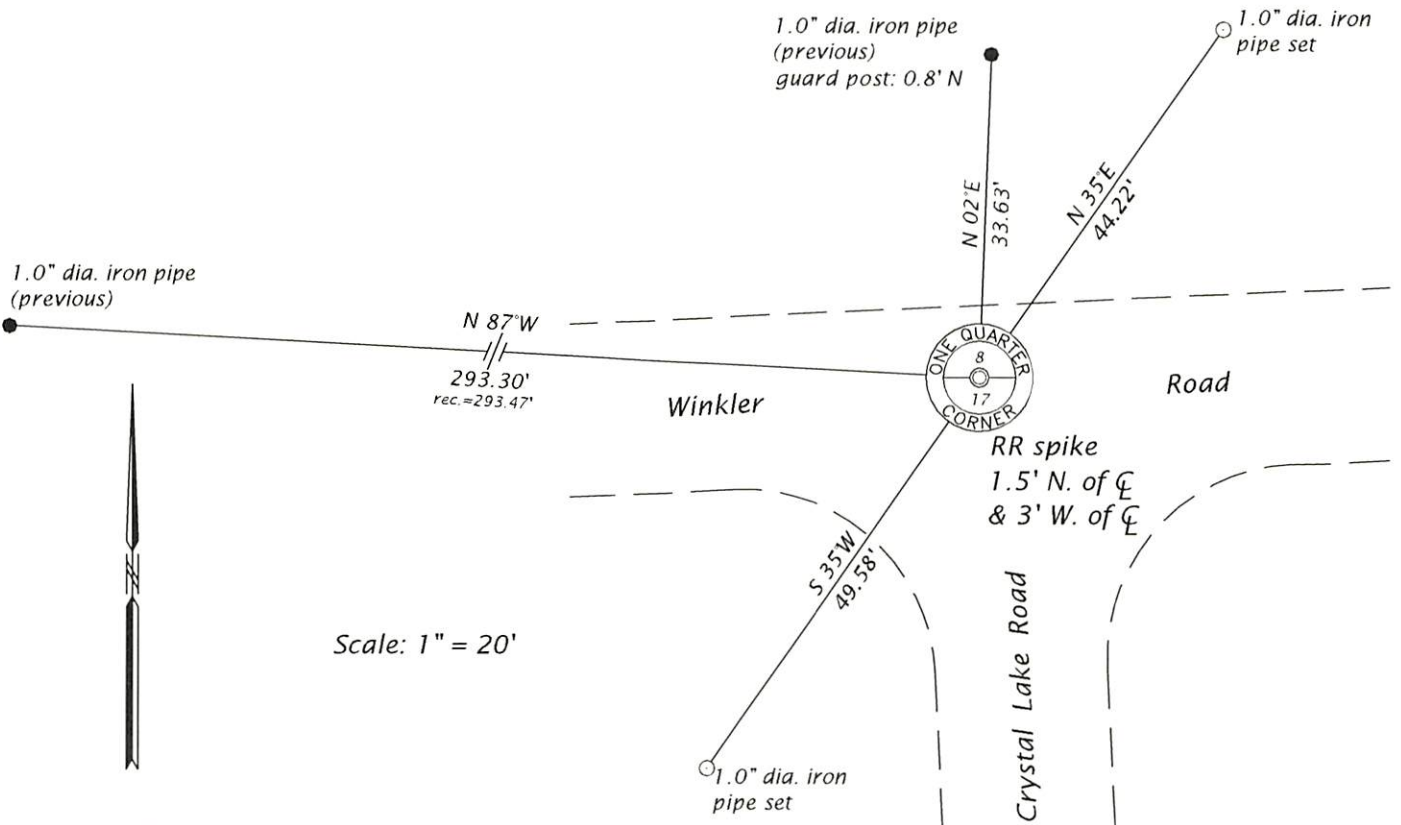
*SEE PREVIOUS U.S.P.L.S. MONUMENT  
RECORD DATED MAY 3, 2004.*

(f)(g)(h) DESCRIPTION OF MONUMENT FOUND AT THIS CORNER AND IF IT WAS ACCEPTED, STATE ALL EVIDENCE (MATERIAL, TESTIMONIAL, OCCUPATIONAL, PLATS, RECORD, OTHER MONUMENTS) USED AS A BASIS FOR ESTABLISHING LOCATION. IF NOT ACCEPTED OR IF NOTHING WAS FOUND, STATE EVIDENCE USED AS BASIS FOR ESTABLISHING LOCATION. IF REESTABLISHED THROUGH LOST CORNER PROPORTIONATE METHODS, INDICATE ALL MONUMENTS, DISTANCES AND DIRECTIONS USED TO ESTABLISH. INDICATE TYPE OF MONUMENT AND SIGN POST FOUND OR SET.

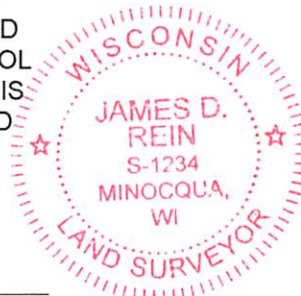
This is a perpetuation of a previous U.S.P.L.S. Monument Record by Kip W. Soder, RLS, dated May 3, 2004, and filed in the office of the Oneida County Register of Deeds. A complete history of the corner can be found on the previous monument record. I accept the previous location as a true and faithful perpetuation or reestablishment of the original corner location and further perpetuate it as follows.

December 11, 2020, I, James D. Rein, P.L.S. No. S-1234, we found the railroad spike set by Soder in 2003. We also recovered the northerly and northwesterly iron pipe witnesses he used. The southwesterly iron pipe is now gone and the northerly pipe is under debris and not recovered. We set two additional iron pipe witnesses - see below for updated ties.

(c)(d)(e) PLAN VIEW OF CORNER WITH TIES TO AT LEAST 4 WITNESS MONUMENTS. IF IN DISAGREEMENT WITH PREVIOUSLY ESTABLISHED CORNER, SHOW THE DISTANCE BETWEEN THE TWO CORNERS AND ALSO INDICATE THE TIES TO THE DISPUTED CORNER.



(i) I, JAMES D. REIN, PROFESSIONAL LAND SURVEYOR NO. S-1234 HEREBY CERTIFY THAT THE CORNER LOCATION ON THIS RECORD WAS DETERMINED BY ME OR UNDER MY DIRECTION AND CONTROL AND THAT THIS U.S. PUBLIC LAND SURVEY MONUMENT RECORD IS CORRECT AND COMPLETE TO THE BEST OF MY KNOWLEDGE AND BELIEF.



*James D. Rein*  
SIGNATURE

3-10-22  
DATE

INDEX NO. J-7  
3811080020