

**FILED**  
APR 14 2010

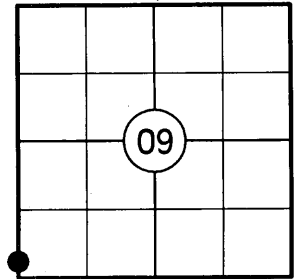
At \_\_\_\_\_ O'Clock \_\_\_\_\_ M

**U.S. PUBLIC LAND SURVEY MONUMENT RECORD**

NOTE: THIS FORM IS INTENDED AND DESIGNED TO FULFILL ALL REQUIREMENTS OF WISCONSIN ADMINISTRATIVE CODE CHAPTER A-E 7.08 U.S. PUBLIC LAND SURVEY MONUMENT RECORD (3) (a)(b)(c)(d)(e)(f)(g)(h)(i). AN ADDITIONAL SHEET MAY BE ADDED IF NECESSARY TO CONFIRM WITH SAID REQUIREMENTS.

(a) CORNER LOCATION:

SOUTH MC ON WEST LINE OF SECTION 9  
TOWNSHIP 38 NORTH  
RANGE 11 EAST  
TOWN OF THREE LAKES  
COUNTY OF ONEIDA



(b) HISTORY OF ORIGINAL CORNER:

ORIGINAL SURVEYOR: WILLIAM E. DAUGHERTY  
DATE OF SURVEY: AUG - SEPT, 1859

ORIGINAL BEARING TREES: 6" SPRUCE - S10°W, 40 LKS  
6" SPRUCE - S55°E, 70 LKS

(f)(g)(h) DESCRIPTION OF MONUMENT FOUND AT THIS CORNER AND IF IT WAS ACCEPTED STATE ALL EVIDENCE (MATERIAL, TESTIMONIAL, OCCUPATIONAL, PLATS, RECORDS, OTHER MONUMENTS) USED AS A BASIS FOR ESTABLISHING LOCATION. IF REESTABLISHING THROUGH LOST CORNER PROPORTIONATE METHODS, INDICATE ALL MONUMENTS, DISTANCES, AND DIRECTIONS USED TO ESTABLISH. INDICATE TYPE OF MONUMENT AND SIGN POST FOUND OR SET.

1859: WILLAM E. DAUGHERTY SET THE ORIGINAL MEANDER POST.

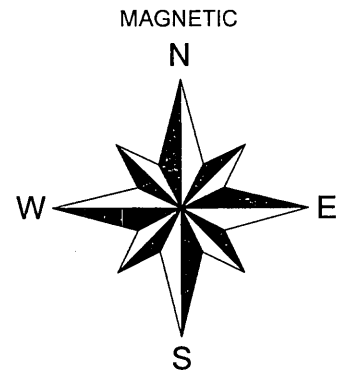
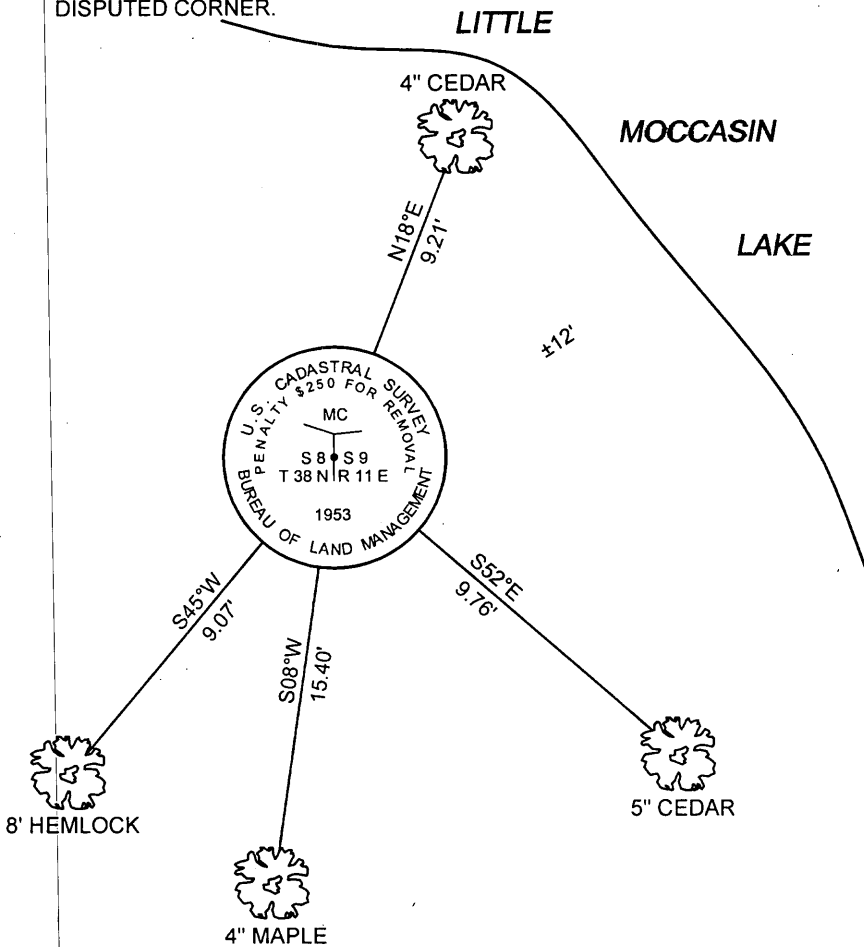
1953: HUGH CRAWFORD SET A 2-1/2" DIA. BRASS CAPPED IRON PIPE IN PLACE OF A CEDAR POST AT THE MEANDER CORNER LOCATION DURING HIS DEPENDENT RESURVEY OF SECTION 9. HE NOTES 2 BT'S: 4" BIRCH - S20°E, 29 LKS AND A 5" CEDAR - S70°W, 46.5 LKS.

JULY, 1981: JAMES D. REIN FOUND A B.L.M. MONUMENT MARKING THE MEANDER CORNER DURING HIS SURVEY IN SECTIONS 8 & 9.

OCTOBER, 1999: STEPHEN J. FAVORITE FOUND A G.L.O. MONUMENT MARKING THE MEANDER CORNER DURING HIS SURVEY IN SECTION 9.

MARCH 16, 2010: I FOUND A 2-1/2" DIA. B.L.M. BRASS CAPPED IRON PIPE STAMPED AS SHOWN BELOW IN GOOD CONDITION. BOTH OF CRAWFORD'S BT'S ARE NOW GONE. I SET A PLASTIC POST 1' NORTH OF THE MONUMENT AND MADE FOUR BEARING TREES AS SHOWN BELOW.

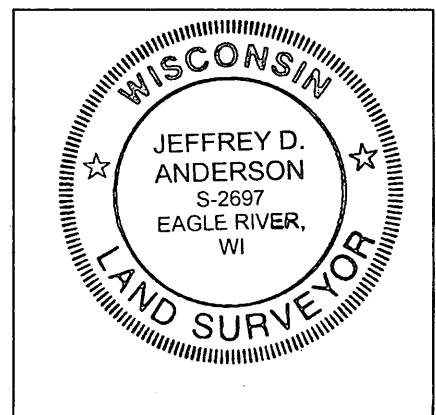
(c)(d)(e) PLAN VIEW OF CORNER WITH TIES TO AT LEAST FOUR WITNESSES. IF IN DISAGREEMENT WITH PREVIOUSLY ESTABLISHED CORNER, SHOW THE DISTANCES BETWEEN THE TWO CORNERS AND ALSO INDICATE THE TIE TO THE DISPUTED CORNER.



NOT TO SCALE  
DISTANCES TO BT'S ARE TO NAIL IN SIDE

I JEFFREY D. ANDERSON, REGISTERED LAND SURVEYOR NO. 2697, HEREBY CERTIFY THAT THE CORNER LOCATION ON THIS RECORD WAS REFERENCED BY ME OR UNDER MY DIRECTION AND CONTROL AND THAT THIS U.S. PUBLIC LAND SURVEY MONUMENT RECORD IS COMPLETE TO THE BEST OF MY KNOWLEDGE AND BELIEF.

*Jeffrey D. Anderson* 3/26/10  
SIGNATURE



3811080400 H 5 9