

CERTIFIED LAND CORNER RESTORATION

State of Wisconsin }
County of } ss.

I, Michael J. Romportl, do hereby certify that on the 1st day of September, 1981, I found evidence of the North 1/4 corner of Section 16 Township 38 North, Range 11 East, Fourth Principal Meridian, as described hereon; and that from this evidence I established a new monument and accessories as described hereon to perpetuate the original location of this corner:

Description of original monument and accessories and subsequent restorations: August 30, 1859 William B Daugherty Set 4 post I.T.s Aspen 10" N 70° E 8 lks. Birch 2" S 30° W 4 lks.

1953 Hugh Crawford with the E.L.M. fd. a 1/2" iron pipe set by a wooden post no evidence of org. bearing trees He set an iron post 30" long 2 1/2" diam. 27" in the grd. with brass cap marked as shown below; I.T.s 11" Maple N 11° E 13 lks.; 14" Hemlock S 72° W 32 lks.; scried bearing trees; distance to N.E. cor 16 2750.22'

Description of corner evidence found:

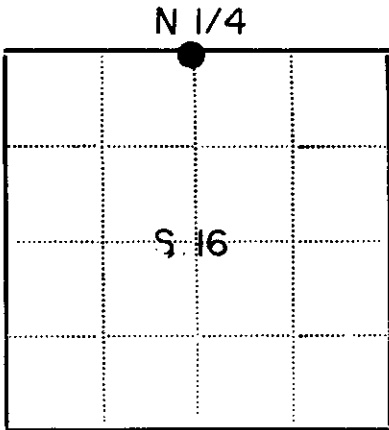
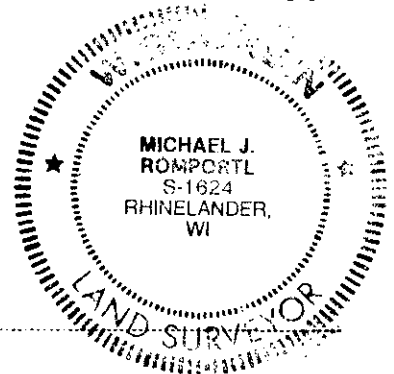
Found Brass capped monument stamped as shown: lts N 10° E 8.3' fd. 20" maple with scarring distance to N.E. cor. 16 2752.17'

4 5 9 / 5 16

Description of monument and accessories I established to perpetuate the location of this corner: Monument in good condition, made the following bearing trees:

- N 88° E 24.09' 5" Elm
S 10° E 28.35' 6" maple
N 80° W 54.09' 10" Maple

- *corner is about 20' south of where a trail forks off to the north and east
*set a 4" post by corner
*measured to P.N. nail in face of blaze
*magnetic bearings



Legend: Black dot - Corner monument restored; Square -

Resident witnesses.....

Dated at Wisconsin, this day of 19.....

Signature Michael J. Romportl Title Reg Land Surveyor (County Surveyor, Registered Land Surveyor, or other duly authorized official)

Surveyors Registration No. 1624

Office of Reg of Deeds County of Oneida

I hereby certify that the within instrument was filed in this office for record on the 12 day of June 1986, and was filed in Book No. Page No. of County Records.

Signature Doris Vera Title Reg of Deeds

Township 38 North, Range 11 East, Section 16, Index No., Page No.

U.S. PUBLIC LAND SURVEY MONUMENT RECORD

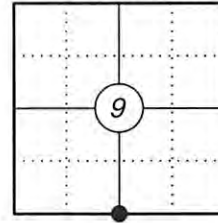
This form is intended and designed to fulfill all requirements of Wisconsin Administrative Code, Chapter A-E 7.08 U.S. Public Land Survey Monument Record (3) (a)(b)(c)(d)(e)(f)(g)(h)(i). An additional sheet may be added if necessary to confirm with said requirements.

Oneida County
Land Information Office
Filed
4/13/2026

(a) Corner Location:

S 1/4 Corner Section 9
Township 38 North
Range 11 East
Town of Three Lakes
County of Oneida

Corner ID: 3811090020



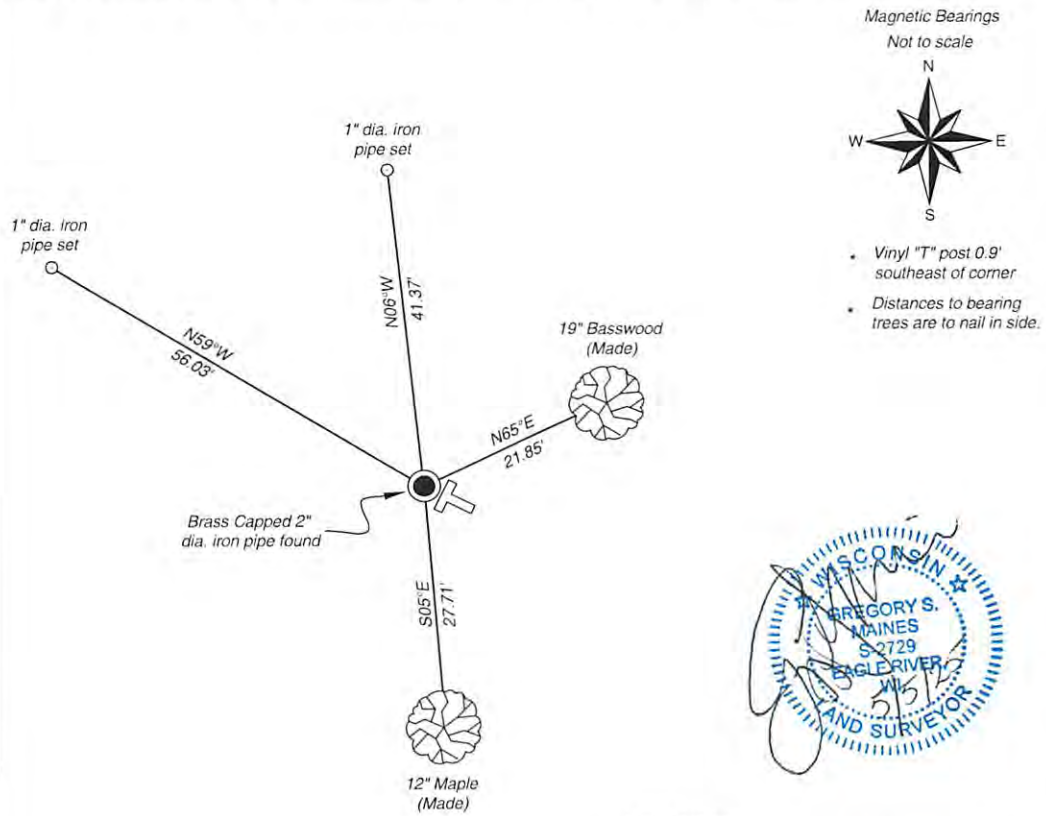
(b) History of Original Corner:

For corner history, see previous Certified Land Corner Restoration by Michael J. Romportl dated September 1, 1981.

(f)(g)(h) Description of monument found at this corner and if it was accepted, state all evidence (material, testimonial, occupational, plats, records, other monuments) used as a basis for establishing location. If reestablishing through lost corner proportionate methods, indicate all monuments, distances, and directions used to establish. Indicate type of monument and sign post found or set.

04/07/2025 I found and accepted a brass capped 2" dia. iron pipe at the corner location. I made two new bearing trees and set two iron pipes to witness the corner as shown below.

(c)(d)(e) Plan view of corner with ties to at least four witnesses. If in disagreement with previously established corner, show the distances between the two corners and also indicate the tie to the disputed corner.



Certification
I, Gregory S. Maines, Professional Land Surveyor No. 2729, hereby certify that the corner location on this record was referenced by me or under my direction and control and that this U.S. Public Land Survey Monument Record is complete to the best of my knowledge and belief.
REF: 2025068

Index No.: