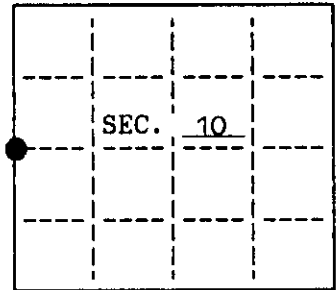


U. S. PUBLIC LAND SURVEY MONUMENT RECORD

Note: This form is intended and designed to fulfill all requirements of Wisconsin Administrative Code, Chapter A-8 7.08 U.S. Public Land Survey Monument Record (3)(a)(b)(c)(d)(e)(f)(g)(h)(i). An additional sheet may be added if necessary to conform with said requirements.

(a) CORNER LOCATION: State Plane Coordinates
 West 1/4 corner of Sec. 10 X Not available
 Township 38 North Y Not available
 Range 11 East Datum Base _____
 Town/City Three Lakes County of Oneida



(b) HISTORY OF ORIGINAL CORNER ESTABLISHMENT Original B.T.'s
 Original Surveyor: William E. Daugherty 6" Spruce S 70° W 8 lks.
 Date of Survey: Commenced Aug. 30, 1859 8" Spruce S 25° E 13 lks.
 Completed Sept. 5, 1859

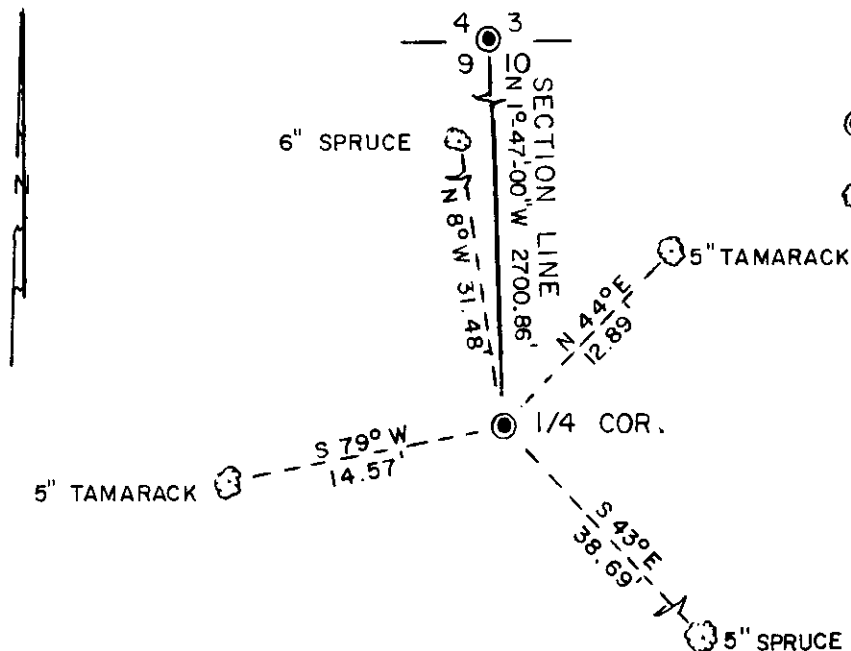
(b)(f)(g)(h) Description of monument found at this corner and if it was accepted, state all evidence (material, testimonial, occupational, plats, records, other monuments) used as a basis for accepting. If not accepted or if nothing was found, state evidence used as basis for establishing location. If reestablished through lost corner proportionate methods, indicate all monuments, distances and directions used to establish. Indicate type of monument and sign post found or set.

1953: G.L.O. found a 1-1/2" iron pipe next to a 4" sq. cedar post. No evidence of original B.T.'s. Replaced iron pipe with a 2" iron pipe brass cap. Reset 1-1/2" iron pipe alongside of brass cap. Made the following B.T.'s:
 12" Hemlock S 25° E 66.99' & 9" Hemlock S 10°-45' W 64.68'

March 16, 1992: I, James L. Will, found G.L.O. iron pipe brass cap with 1-1/2" iron pipe alongside. G.L.O. B.T.'s are gone. Made the following new B.T.'s measured to a nail in the side:
 5" Spruce S 43° E 38.69'
 5" Tamarack S 79° W 14.57'
 6" Spruce N 8° W 31.48'
 5" Tamarack N 44° E 12.89'

Set a plastic sign marker 1' northeast of the corner.

(c)(d)(e) Plan view of corner with ties to at least 4 witness monuments. If in disagreement with previously established corner, show the distances between the two corners and also indicate the ties to the disputed.



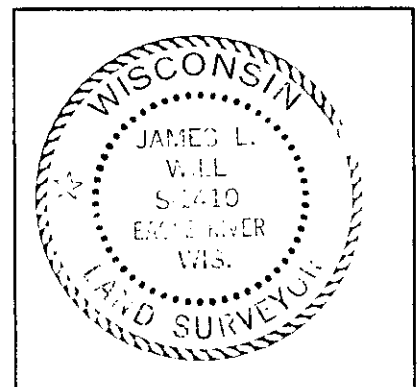
LEGEND

SCALE: 1" = 10'

- G.L.O. IRON PIPE BRASS CAP FOUND IN PLACE
- BEARING TREE MEASURED TO A NAIL IN THE SIDE

(i) I, James L. Will, R.L.S. #1410 hereby certify that the corner location on this record was determined by me or under my direction and control and that this U.S. Public Land Survey Monument Record is correct and complete to the best of my knowledge and belief.

Signature James L. Will Date March 17, 1992



INDEX NO. G-13