

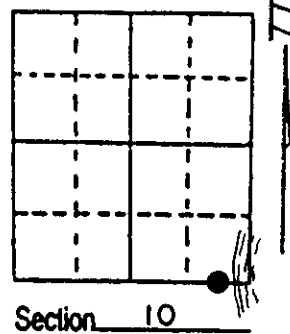
U.S. PUBLIC LAND SURVEY MONUMENT RECORD

Note: This form is intended and designed to fulfill all requirements of Wisconsin Administrative Code, Chapter A-E 7.08 U.S. Public Land Survey Monument Record (3) (a) (b) (c) (d) (e) (f) (g) (h) (i). An additional sheet may be added if necessary to conform with said requirements.

(a) Corner location: Township 38 North
 Range 11 East/West

Town/City/Village Three Lakes

County Oneida



(b) (f) (g) (h) Description of monument found at this corner and if it was accepted, state all evidence (material, testimonial, occupational, plats, records, other monuments) used as a basis for accepting. If not accepted or if nothing was found, state evidence used as basis for establishing location. If reestablished through lost corner proportionate methods, indicate all monuments, distances and directions used to establish. Indicate type of monument found or set and sign post.

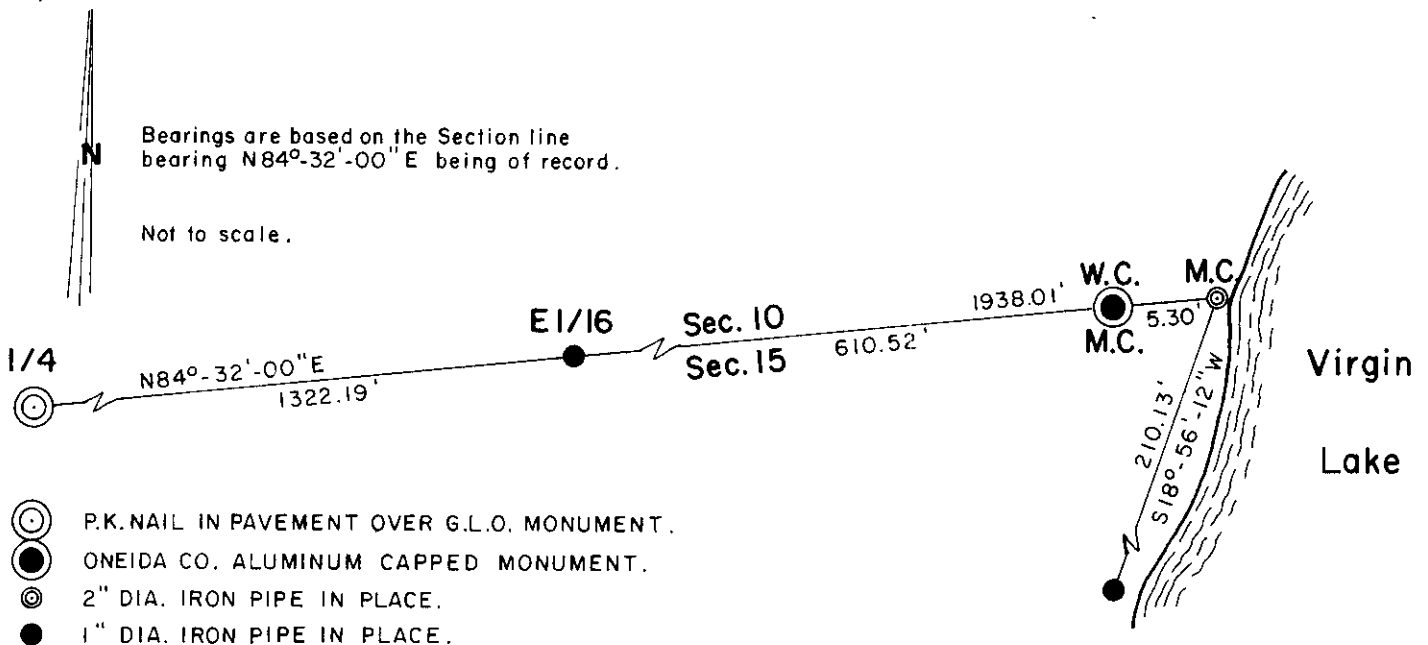
1859- Wm. Daugherty - East from 1/4 corner 27.55 ch. to M.C. Set post.
 Original B.T.'s W. Pine 25" N80°W 1801ks.
 Hemlock 10" S85°W 1701ks.

1921- E.J. Synott - Uses M.C. for survey of Moyer's Plat.

1962- Bandow - Genisot map C1767 accepts this position while creating Plat of Forest Primeval.

2002- Soder - Found 2" diameter iron pipe used in previous surveys and subdivisions, verified by measurement. Iron pipe marking the M.C. between Sections 10 & 15 is only 1 foot from the Westerly shore of Virgin Lake. Set 2½" diameter Oneida Co. aluminum capped monument on Section line as Witness Corner to M.C. Stamped to identify, and set plastic (over)

(c) (d) (e) Plan view of corner with ties to at least 4 witness monuments. If in disagreement with previously established corner, show the distances between the two corners and also indicate the ties to the disputed corner.



(i) I, Kip W. Soder R.L.S. #1731
 (type or print name) certify that the corner location on this record was determined by me or under my direction and control and that this U.S. Public Land Survey Monument Record is correct and complete to the best of my knowledge and belief.

Kip W. Soder Signature 7/25/02 Date



Stamp
 3811100006

Index No. 516-17

sign post bearing North 0.80' from W.C.

REGISTER OF DEEDS OFFICE
ONEIDA COUNTY, WIS.
FILED
SEP 27 2002
At _____ O'Clock _____ M
THOMAS H. LEIGHTON
REGISTER OF DEEDS