

State of Wisconsin

County of Oneida } ss.

I, Thomas A. Boettcher, do hereby certify that on the 1st day of October, 1984, I found evidence of the South one-quarter corner of Section 10 38 Township 11 East, Fourth Principal Meridian, as described hereon; and that from this evidence I established a new monument and accessories as described hereon to perpetuate the original location of this corner.

Resident witnesses:

Michael F. Weber

U. S. Public Land Survey Monument Record

Index No. 5-15

History of original corner establishment:

Original corner was established during the course of the subdivision of T38N, R11E which was completed by William F. Vaugherty, Deputy Surveyor in 1859.

Original B.T.'s:

16" Hemlock S 71° E 12 lks.
10" Birch N 30° W 22 lks.

Description of corner evidence found:

Found a P.K. nail over a G.L.O. monument found in place.

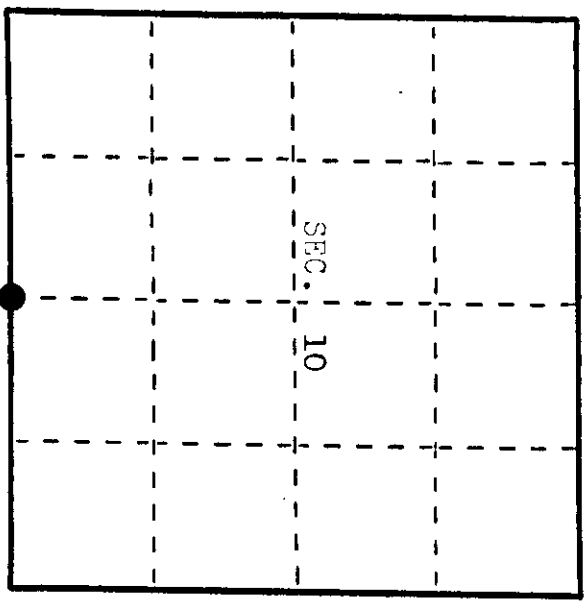
Found the following B.T.'s:

12" Balsam stump S 32° W 29.90'

Description of monument and accessories I established to perpetuate the original location of this corner.

Blazed and scribed the following new bearing trees:

10" W. Pine N 35° W 40.16' (Measurements are to a nail in the
12" J. Pine N 59° E 76.19' side of the trees.)
15" N. Pine S 76° E 95.13'
7" Maple S 6° W 39.03'



● - Corner monument restored.

Dated at Eagle River, Wis., this 5th day of November, 1984.

Signature Thomas A. Boettcher Title Registered Land Surveyor Registration No. S-1763
(County Surveyor, Registered Land Surveyor, or other duly authorized official)

Office of Register of Deeds, County of _____, I hereby certify that the within instrument was filed in this office for record on the _____ day of _____, 19____ at _____ o'clock _____ M.

(Register of Deeds)

By _____ Deputy

3811160020

Describe any material discrepancy between the location of the corner as restored or reestablished and the location of that corner as previously restored or reestablished by distance and direction. Show the discrepancy on the plan view drawing under (d), above. Show the distances between the corner as previously restored or reestablished and (1) the corner as restored or reestablished, and (2) to at least 2 of the witness monuments shown on the drawing in (d), above.

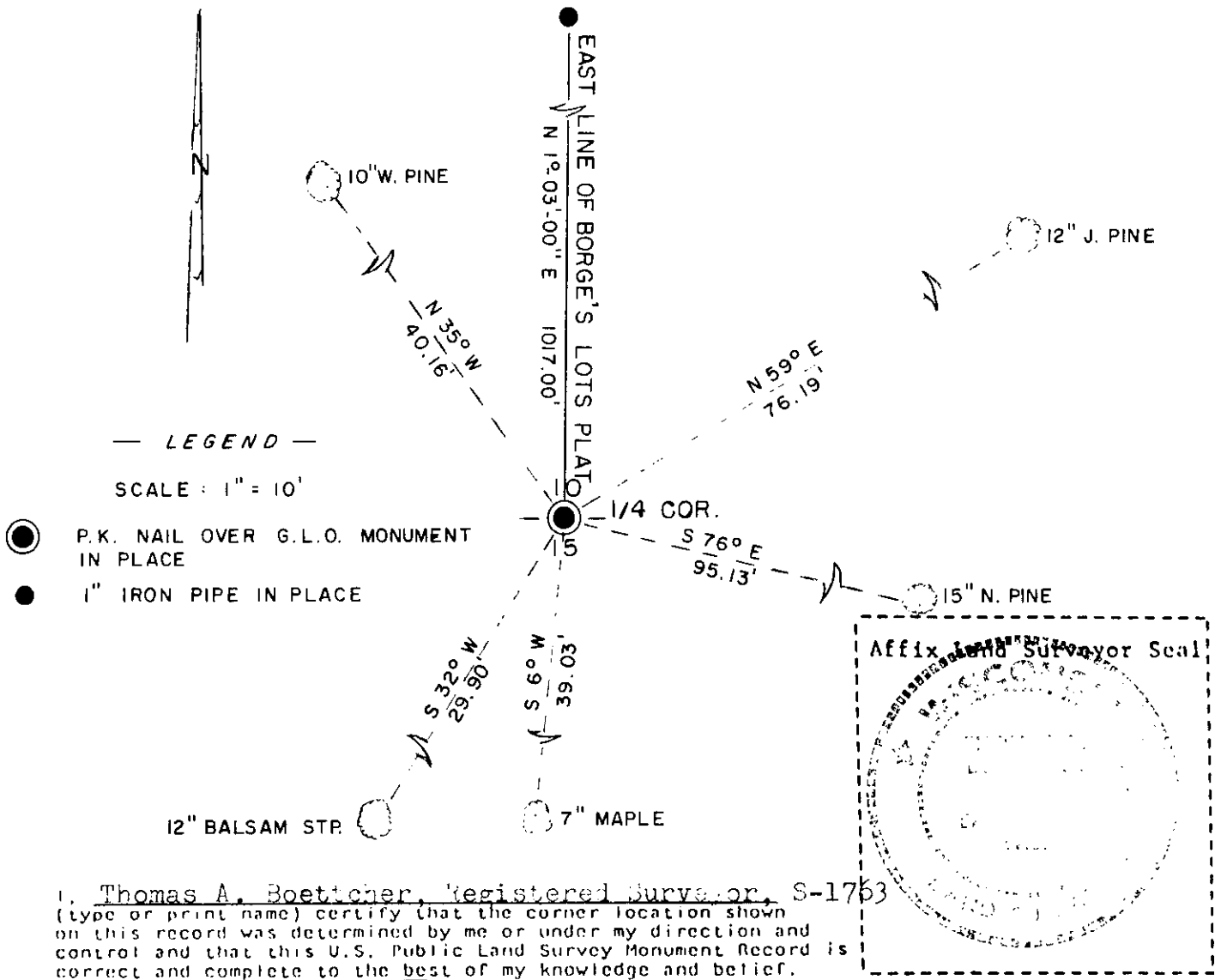
None. See sketch below.

Was the corner restored through acceptance of (1) an obliterated evidence location, or, (2) a found perpetuated location?

Corner was restored through acceptance of a found perpetuated location.

Was the corner reestablished through lost corner proportionate methods? If so, show the method, including the directions and distances to other public land survey corners used as evidence or used for proportioning in determining the corner location?

See sketch below.



I, Thomas A. Boettcher, Registered Surveyor, S-1753
 (type or print name) certify that the corner location shown on this record was determined by me or under my direction and control and that this U.S. Public Land Survey Monument Record is correct and complete to the best of my knowledge and belief.

Signature Thomas A. Boettcher Date November 5, 1984

REGISTER OF DEEDS OFFICE
 ONEIDA COUNTY, WIS.
 FILED
 NOV 11 1984
 At 8:00 O'Clock P.M.
 DORIS VERAGE KUEHN
 REGISTER OF DEEDS