

This form is intended to fulfill the requirements of Chapter A-E7.08 (3)(a) thru (i) U.S. Public Land Survey Monument Location Record, Wisconsin Administrative Code. Use the reverse side of form for continuation.

U.S. PUBLIC LAND SURVEY MONUMENT LOCATION RECORD

USPLS CORNER: EAST WIT MC SECTION: 15 TOWNSHIP: 38 NORTH RANGE: 11 EAST
 NAME OF WATERWAY FOR M.C. CORNER : DEER LAKE SECTION LINE: NORTH
 (CITY)(VILLAGE)(TOWN) OF: THREE LAKES COUNTY OF: ONEIDA

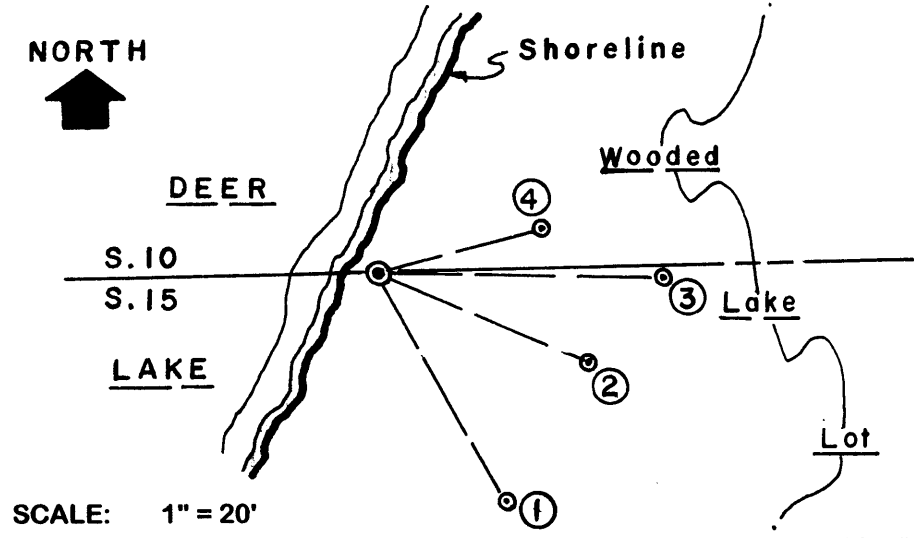
Description of monument found or placed and all other evidence used as the basis for monument location; including monuments and measurements required if the corner location was reestablished by lost corner proportionate methods. Also indicate name of the original surveyor, original survey date and the corner monument, bearing trees, witness or other reference monuments established, including measured bearing and distance ties, from available survey records.

Found and accepted an old white painted/rusting 3/4" dia. iron pipe with uncapped top 9" up near North root crown of a 16" Pw and 3'+/- East of lakeshore bearing N25°E this date; lacking any record evidence to the contrary, I accepted the old iron pipe in accordance with its relative field position by comparison to that drafted upon following Plats of Survey, in order to establish directional control for the section line West of the North 1/4 corner of Section 15. I replaced the 30" long old iron pipe with a standard 2" dia. by 30" aluminum pipe monument with stamped Oneida County cap 2" up.

In September 1859, William E. Daugherty/GLO set a wood post as the original MC and noted OBTs: a 7" Pw S86.5°E 19 links and a 10" Bw N80°E 34 links; all now undoubtedly obliterated in impounded lake bed due to dam on the Eagle River in Section 5. In June 1921, E.J. Flynnott surveyed the Plat of Borges Lots and Moyers Lots on Deer and Virgin Lakes per Oneida County records; the South line of the surveyed lots is shown as being along the section line from the North 1/4 corner of Section 15 West to an apparent MC on Deer Lake, but no monument there described.

In July 1974, Robert Bandow/RLS 104 shows the south line of Borges Lots as probable section line from the North 1/4 corner of Section 15 West to Deer Lake, at a point approximately midway, where I believe I found the old iron pipe, between iron pipe monuments found at the NW corner of Lot 11 and meander line angle point to the South, but no MC monument described, per Plat of Survey filed as B-827 in Oneida County survey records. New Wit MC is on the shore of improved lake Lot 11 at Fire No. 6693 Woodland Lane. This recovery completed August 13, 2003; there were no direct witnesses. NOTE: See the reverse side for a sketch of survey control data that I measured in the field this date.

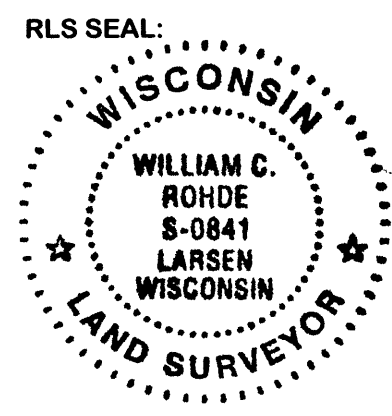
Plan view map of monument location with bearing and distance ties to a minimum of four(4) described witness or reference monuments of concrete, natural stone, iron, live bearing trees or equivalent material. If applicable, also show a minimum of two(2) bearing and distance ties to any other monument found and not accepted; including the bearing and distance from the accepted monument.



- WITNESS MONUMENT TIES:**
- ① Probable old 16" Pw BT with open face blaze above root crown S29°E at 27.42'.
 - ② New 18" Pr BT S67°E 23.55'.
 - ③ Probable old 20" Pr BT with plain face blaze scar above root crown S89°E 29.15'.
 - ④ Probable old 24" Pr BT with plain face blaze scar above root crown N75°E 17.67'.
- Standard white poly 'T' marker post set 4" South of aluminum monument.

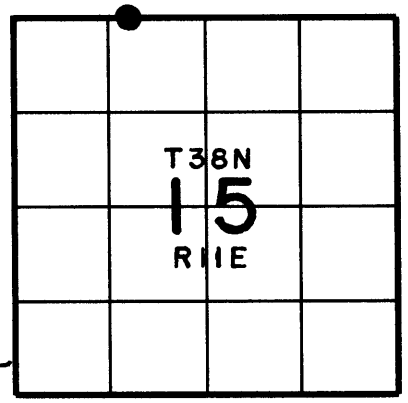
SCALE: 1" = 20'

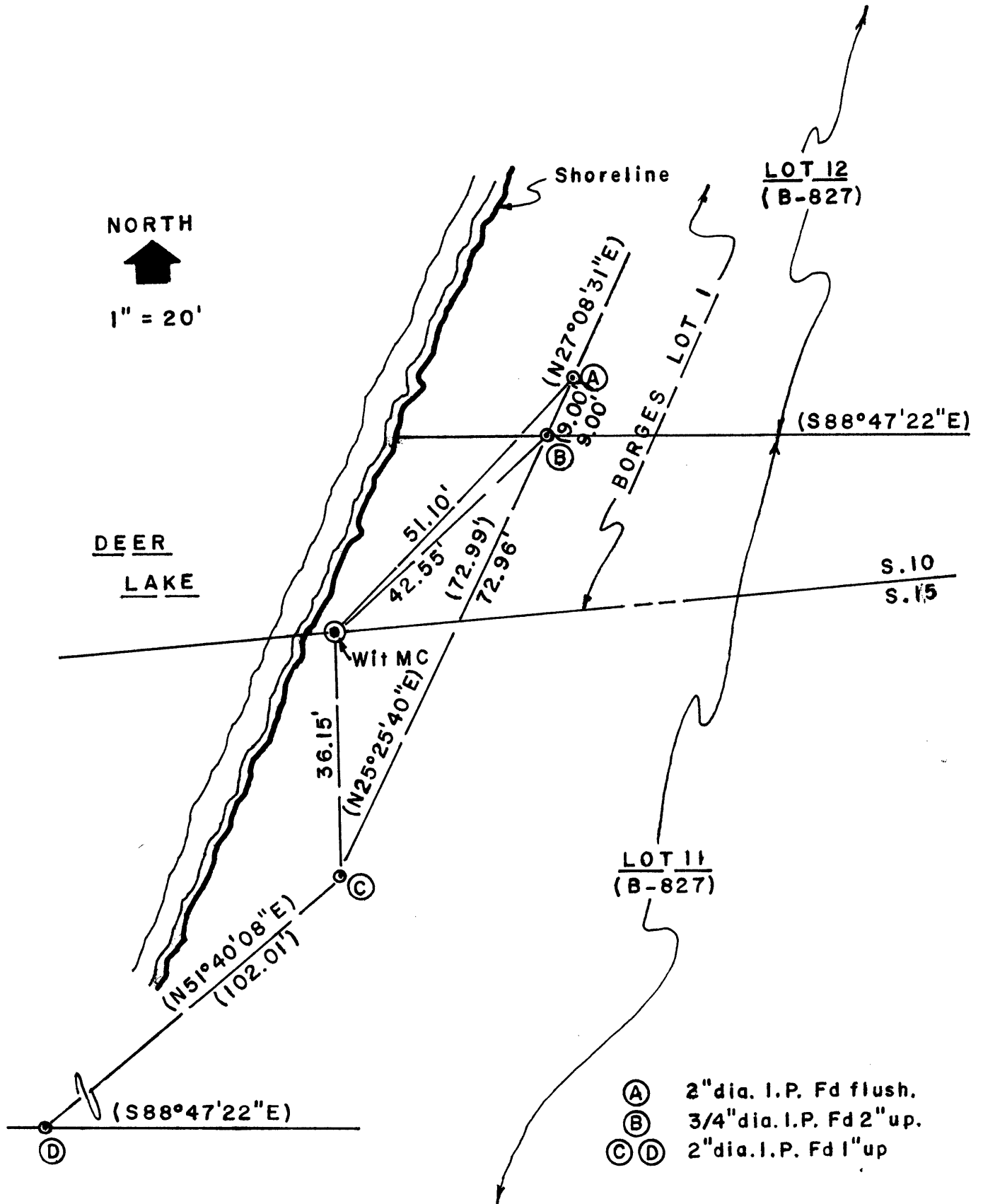
Unless otherwise indicated, all bearing tree ties are to a .25" dia. by 2.5" long PK nail with a 1.25" dia. steel washer driven into unblazed right face and a .25" dia. by 2.5" long PK nail with a 2" dia. steel washer stamped BT is also driven into unblazed face of bearing tree at DBH; the basis for measured bearings is by compass to nearest degree and all tie distances are measured horizontal by steel tape corrected to nearest 1/100th feet at standard temperature of 68° F.



LAND SURVEYOR CERTIFICATE:
 I, William C. Rohde, hereby certify that I am duly licensed as a Professional Land Surveyor in the State of Wisconsin; that this USPLS monument location was determined by me and/or under my direct supervision and control; and that this U.S. Public Land Survey Monument Location Record is true and correct to the best of my knowledge and belief.

Signed *William C. Rohde*
 William C. Rohde RLS 841





NOTE: Record data shown in ().