

This form is intended to fulfill the requirements of Chapter A-E7.08 (3)(a) thru (i) U.S. Public Land Survey Monument Location Record, Wisconsin Administrative Code. Use the reverse side of form for continuation.

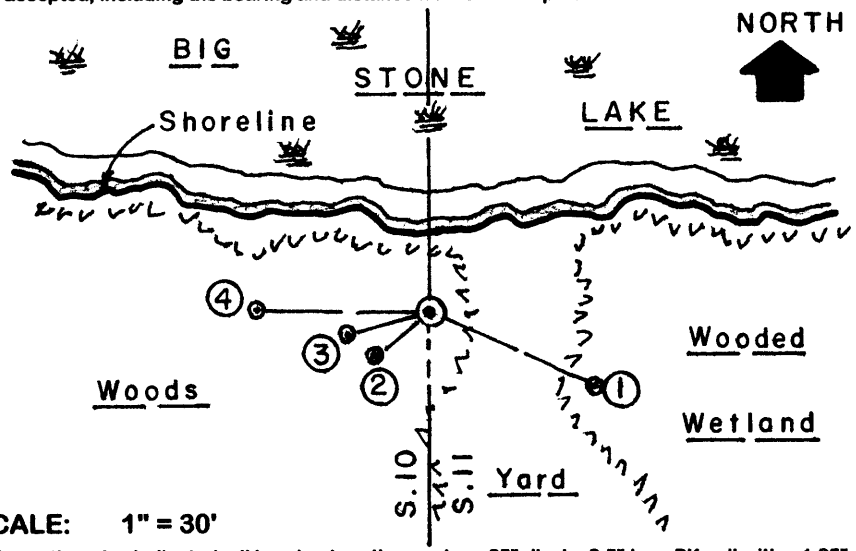
U.S. PUBLIC LAND SURVEY MONUMENT LOCATION RECORD

USPLS CORNER: SOUTH WITNESS MC SECTION: 11 TOWNSHIP: 38 NORTH RANGE: 11 EAST
 NAME OF WATERWAY FOR M.C. CORNER : BIG STONE LAKE SECTION LINE: WEST
 (CITY)(VILLAGE)(TOWN) OF: THREE LAKES COUNTY OF: ONEIDA

Description of monument found or placed and all other evidence used as the basis for monument location; including monuments and measurements required if the corner location was reestablished by lost corner proportionate methods. Also indicate name of the original surveyor, original survey date and the corner monument, bearing trees, witness or other reference monuments established, including measured bearing and distance ties, from available survey records.

Found and accepted an undisturbed 6" dia. old concrete monument with brass tablet in top 2" above grade as stamped by GLO during 1941 Resurvey and I also found an older 'U' channel steel post with standard USFS Land Survey Monument Sign bolted to top N10°W 15" from monument. Corner is now about 12 feet South of irregular boggy lakeshore bearing westerly and about 6 feet West of West edge of a 15' wide lawn area North to lake and dock. In September 1859, William E. Daugherty/GLO did not set an MC as no lake existed at the time as Big Stone Lake was impounded later by the damming of the Eagle River. During the 1941 GLO Resurvey, Hugh B. Crawford set this Witness MC location with the concrete monument found this date and noted blazed and scribed BTs: a 10" Cedar N69.25°E 74 links found this date as a 16" Cedar N67°E with upper & lower blaze scars plain and distance OK; a 16" Hemlock S35.25°E 59 links, now gone; a 10" Bw S39°W 34 links, now gone and a 16" Pw N80.5°W 164 links, now gone. In September 1960, Robert Bandow/RLS 104 notes a GLO monument at this Witness MC per plat of survey filed as B-4611 in Oneida County survey records. In July 1973, Robert Bandow/RLS 104 notes a GLO monument at this Witness MC per plat of survey filed as B-757 in Oneida County survey records. In March 1985, John Fisher/RLS 836 found subject GLO concrete monument, per Public Land Survey Monument Record filed April 3, 1985 in Oneida County records, and noted new BTs: a 10" Mr S70°E 27.7' and a 5" Mr S38°W 11.0', both found OK and used for new ties below. In October 1989, James L. Will/RLS 1410 notes a GLO concrete monument at this Witness MC per plat of survey filed as B-2106 in Oneida County Survey records. In October 2002, Russell Brown/RLS 2148 notes a concrete monument found at this Witness MC per plat of survey filed as B-5129 in Oneida County survey records. This recovery completed August 5, 2004; there were no direct witnesses. Corner is accessible on lake frontage at #746 STH 32 and I had advised owner spouse Dale Schacht of my recovery activity.

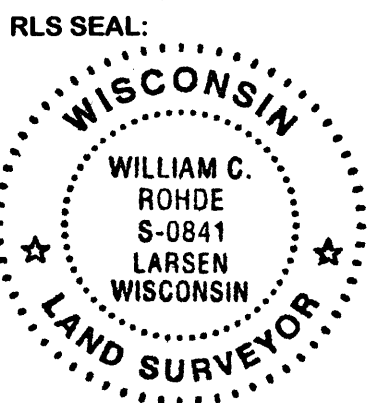
Plan view map of monument location with bearing and distance ties to a minimum of four(4) described witness or reference monuments of concrete, natural stone, iron, live bearing trees or equivalent material. If applicable, also show a minimum of two(2) bearing and distance ties to any other monument found and not accepted; including the bearing and distance from the accepted monument.



- WITNESS MONUMENT TIES:**
- ① Old 10" Mr BT, with upper & lower blazes open and USFS BT sign on upper face, S66°E 27.59' to PK/washer in left face.
 - ② Old 6" Mr BT, with upper and lower blazes shut and USFS BT sign on upper face, S40°W 10.92'.
 - ③ New 6" Hemlock BT S75°W 12.85' to PK/washer in left face.
 - ④ New 7" Mr BT N89°W 26.50'.
- I painted old BTs and flagged new BTs, monument & sign post blaze orange.

SCALE: 1" = 30'

Unless otherwise indicated, all bearing tree ties are to a .25" dia. by 2.5" long PK nail with a 1.25" dia. steel washer driven into unblazed right face and a .25" dia. by 2.5" long PK nail with a 2" dia. steel washer stamped BT is also driven into unblazed face of bearing tree at DBH; the basis for measured bearings is by compass to nearest degree and all tie distances are measured horizontal by steel tape corrected to nearest 1/100th feet at standard temperature of 68° F.



LAND SURVEYOR CERTIFICATE:
 I, William C. Rohde, hereby certify that I am duly licensed as a Professional Land Surveyor in the State of Wisconsin; that this USPLS monument location was determined by me and/or under my direct supervision and control; and that this U.S. Public Land Survey Monument Location Record is true and correct to the best of my knowledge and belief.

Signed: *William C. Rohde*
 William C. Rohde RLS 841

