



Stock No. 26273

U.S. PUBLIC LAND SURVEY MONUMENT RECORD

Index No. J-20-21

State of Wisconsin } ss. County of Oneida

I, JAMES R. GROTHMAN, do hereby certify that on the 9th day of October, 1986, I found evidence of the Witness point corner of Sections 11 and 14 Township 38 North, Range 11 East, Fourth Principal Meridian, as described hereon; and that from this evidence I established a new monument and accessories as described hereon to perpetuate the original location of this corner.

Resident witnesses:

None

History of original corner establishment: Original survey in 1859 by William E. Daugherty.

Dependent resurvey in 1941 by Hugh B. Crawford. At 8.58 chains set concrete monument 24 inches long, 6 inch diameter, 20 inches in the ground with a brass cap marked:

Description of corner evidence found:	From which the following bear:	
T38N		
S11		
S14 WP	20"	S44-1/2°W 29 lks.
R11E 1941	12"	N28-3/4°W 38 lks.
1941	1"	West and alongside mon.

G.L.O. Monument as described and in place. The following bearing tree: Hemlock Stump 18" N29°W 25.25 feet

Description of monument and accessories I established to perpetuate the original location of this corner.

Corner in good condition. Blazed and scribed the following new bearing trees:

Maple	17"	N21°E	10.67 feet
Oak	23"	N49°E	28.44 feet
Oak	16"	S72°W	30.58 feet
SE Corner of Cottage		N87°W	41.39 feet
Steel Sign Post		East	1.00 foot

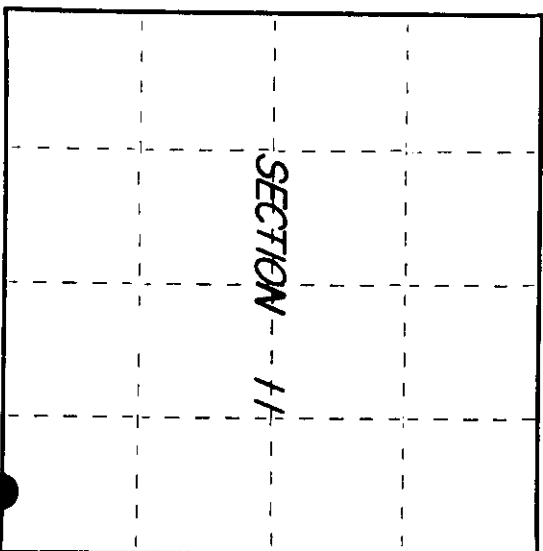
Dated at Portage, Wis., this 30 day of October, 1986

Signature James R. Grothman (County Surveyor Registered Land Surveyor, or other duly authorized official) Registration No. 1321

Office of Register of Deeds, County of Oneida, I hereby certify that the within instrument was filed in this office for record on the 30 day of October, 1986 at 10 o'clock A. M.

(Register of Deeds)

○ = Corner monument restored.



3811110004

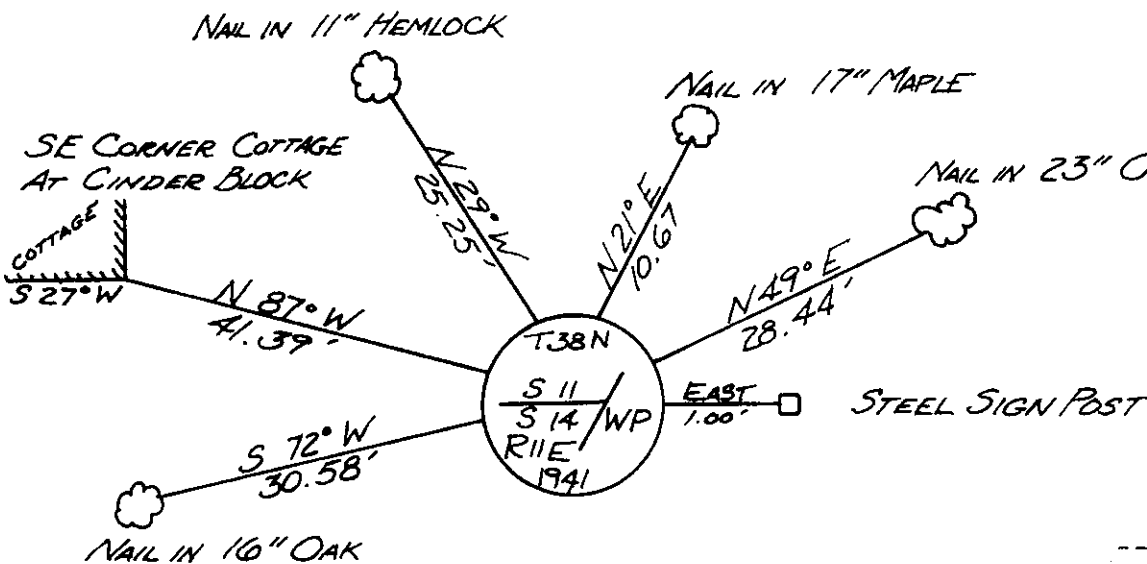
(e) Describe any material discrepancy between the location of the corner as restored or reestablished and the location of that corner as previously restored or reestablished by distance and direction. Show the discrepancy on the plan view drawing under (d), above. Show the distances between the corner as previously restored or reestablished and (1) the corner as restored or reestablished, and (2) to at least 2 of the witness monuments shown on the drawing in (d), above.

See drawing below

(f) Was the corner restored through acceptance of (1) an obliterated evidence location, or, (2) a found perpetuated location?

Corner was located through acceptance of a found perpetuated location.

(g&h) Was the corner reestablished through lost corner proportionate methods? If so, show the method, including the directions and distances to other public land survey corners used as evidence or used for proportioning in determining the corner location?



REGISTER OF DEEDS OFFICE
ONEIDA COUNTY, WIS.
FILED
APR 8 1991
At _____ O'Clock _____ M
DOMAS H. LEIGHTON
REGISTER OF DEEDS

Affix Land Surveyor Seal

(1) JAMES R. GROTHMAN, Registered Land Surveyor No. 1321
[type or print name] certify that the corner location shown on this record was determined by me or under my direction and control and that this U.S. Public Land Survey Monument Record is correct and complete to the best of my knowledge and belief.

Signature

Date

Certificate ready for filing:

St. Frank Hawley
District Ranger

Date

1/6/87