

State of Wisconsin

County of Oneida } ss.

U. S. Public Land Survey Monument Record

Index No. 5-19

History of original corner establishment:

Original corner was established during the course of the subdivision of T 38 N, R 11 E, which was started Aug. 30, 1859 and completed Sept. 5, 1859 by William E. Daurerty, Deputy Surveyor.

Original B.T.'s:

- 10" Birch N 42° W 21 lks.
- 12" Hemlock S 18° E 26 lks.

Description of corner evidence found:

Found "X" on rock in road.

Found a 6.0 6" dia. concrete monument brass cap witness corner

N 87°-16'-27" W 10.56' from the corner.

Found the following trees for the witness corner:

- 20" Maple N 64° E 7.46' (Measurements are to a nail 7" dbh. Maple S 2° W 13.23' in the side of the trees.)

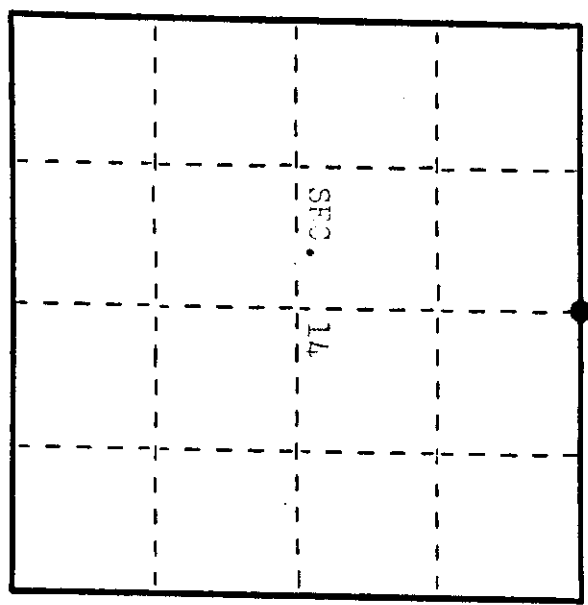
I, James L. Will, do hereby certify that on the 28th day of August, 1985, I found evidence of the North one-quarter corner of Section 14 Township 38 North, Range 11 East, Fourth Principal Meridian, as described hereon; and that from this evidence I established a new monument and accessories as described hereon to perpetuate the original location of this corner.

Resident witnesses:

Michael Weber

Description of monument and accessories I established to perpetuate the original location of this corner.

Made the following reference ties as shown on the reverse side.



● = Corner monument restored.

Dated at Eagle River, Wis., this 20th day of September, 1985.

Signature of James L. Will, Title: Registered Land Surveyor, Registration No. S-14110 (County Surveyor, Registered Land Surveyor, or other duly authorized official)

Office of Register of Deeds, County of Oneida, I hereby certify that the within instrument was filed in this office for record on the 19th day of September, 1986, at 2:00 o'clock A.M.

Signature of David D. Davis, (Register of Deeds)

By [Signature] Deputy

Describe any material discrepancy between the location of the corner as restored or reestablished and the location of that corner as previously restored or reestablished by distance and direction. Show the discrepancy on the plan view drawing under (d), above. Show the distances between the corner as previously restored or reestablished and (1) the corner as restored or reestablished, and (2) to at least 2 of the witness monuments shown on the drawing in (d), above.

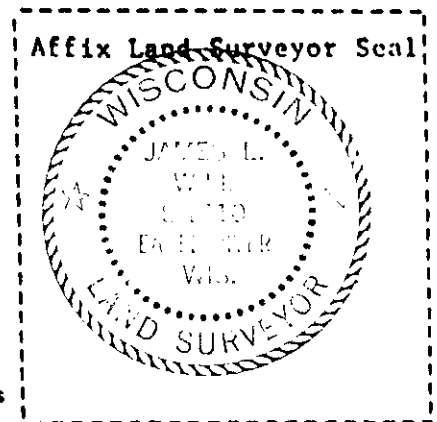
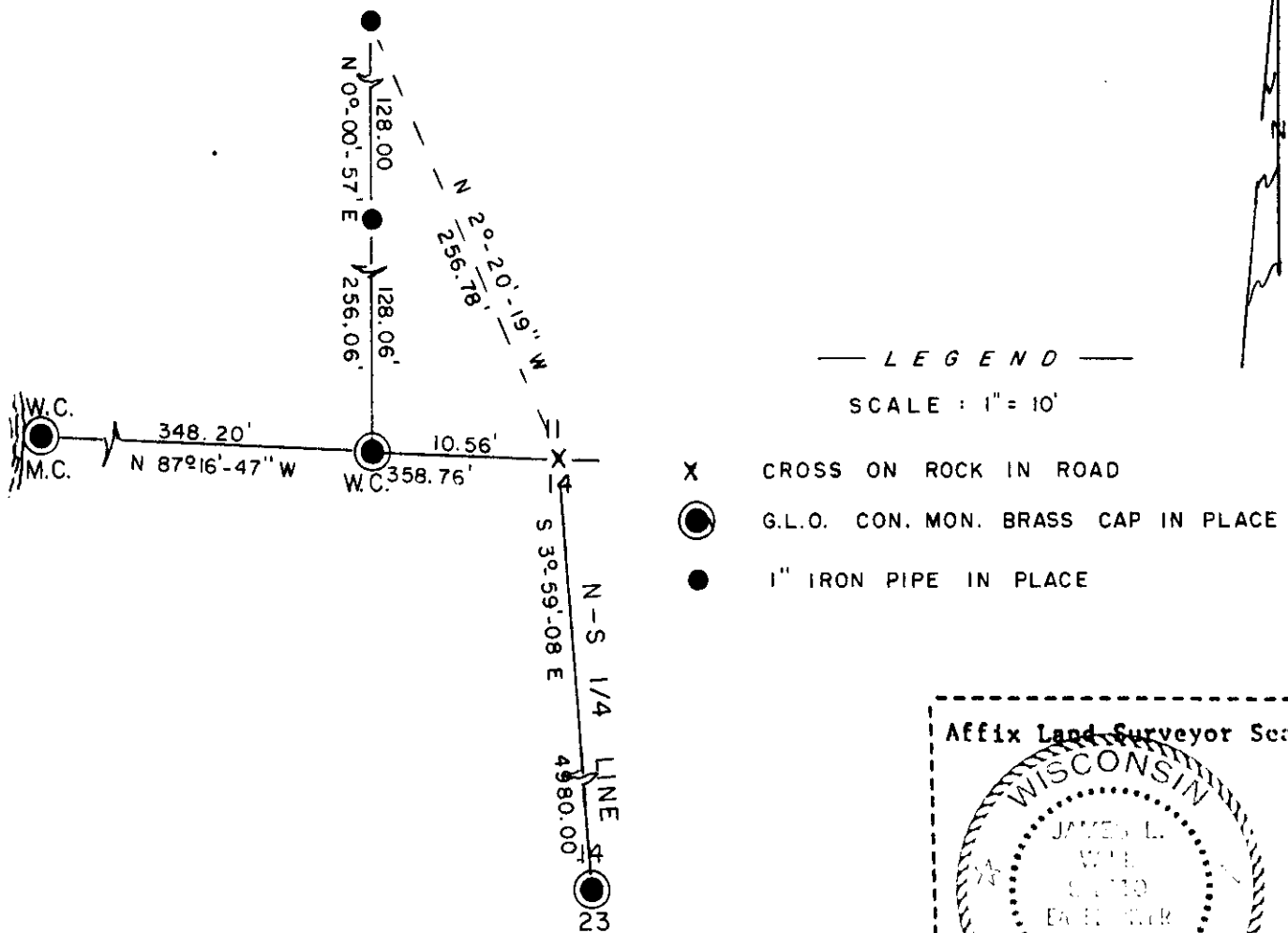
None. See sketch below.

Was the corner restored through acceptance of (1) an obliterated evidence location, or, (2) a found perpetuated location?

Corner was restored through acceptance of a found perpetuated location.

Was the corner reestablished through lost corner proportionate methods? If so, show the method, including the directions and distances to other public land survey corners used as evidence or used for proportioning in determining the corner location?

No. See sketch below.



I, James L. Will, R.L.S. 1410
 (type or print name) certify that the corner location shown on this record was determined by me or under my direction and control and that this U.S. Public Land Survey Monument Record is correct and complete to the best of my knowledge and belief.

James L. Will
 Signature

Sept. 20, 1985
 Date



Stock No. 26273

U.S. PUBLIC LAND SURVEY MONUMENT RECORD

Index No. J-19

State of Wisconsin

County of Oneida } ss.

I, William B. Cochran, do hereby certify that on the 20th day of April, 1989, I found evidence of the South Quarter corner of Section 11, Township 38 North, Range 11 East, Fourth Principal Meridian, as described hereon; and that from this evidence I established a new monument and accessories as described hereon to perpetuate the original location of this corner.

Resident witnesses:

History of original corner establishment:

Dependent Resurvey in 1941 by Hugh B. Crawford. West between Sections 11 and 14, at 34.41 chains set a granite stone with an X marked on the top for the Quarter Corner. At 34.57 chains set a concrete monument, 24 inches long, 6 inches in diameter, for the Witness Corner to the Quarter Corner. From which the following bear:

Hemlock	14"	N 5°30'W	118 1/2 links
Maple	5"	S 3°30'W	19 1/2 links

Corner position was established by a local surveyor, according to the testimony of Adolph Kloes, a surveyor of Three Lakes, Wisconsin.
Description of corner evidence found:

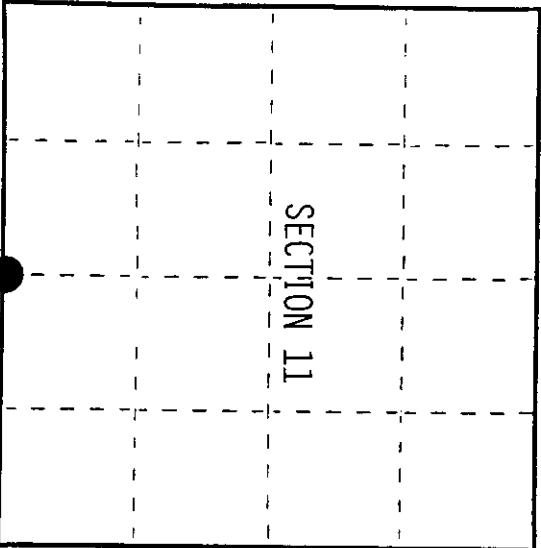
Found Witness Corner monument as described and in place, from which the following bear;

Maple	8"	S 3°30'W	12.87 feet
Hemlock(Tip-out)		N 5°30'W	78.21 feet

Description of monument and accessories I established to perpetuate the original location of this corner.

Blazed and scribed a new bearing tree;

Maple	10"	S77°E	42.47 feet
-------	-----	-------	------------



● = Corner monument restored.

Dated at Hills, Wis., this 28th day of August, 1989.

Signature *William B. Cochran* Title Land Surveyor (County Surveyor, Registered Land Surveyor, or other duly authorized official) Registration No. S-1107

Office of Register of Deeds, County of Oneida, I hereby certify that the within instrument was filed in this office for record on the 19th day of August, 1989, at 10:00 o'clock P.M.

(Register of Deeds)

By Deputy

381110020

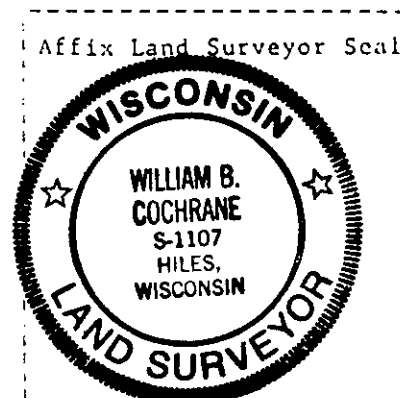
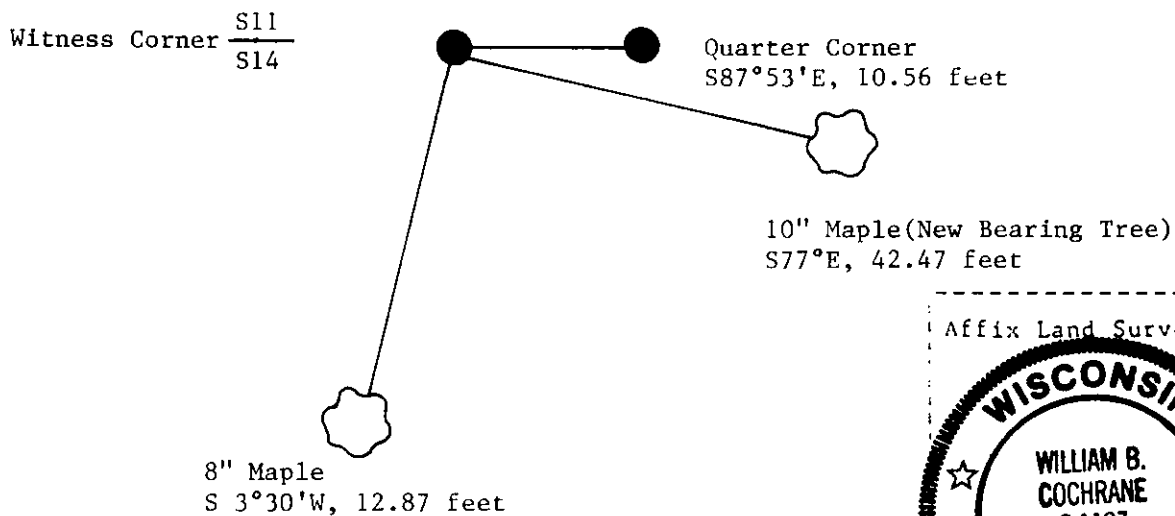
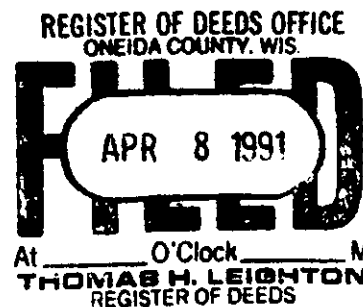
Describe any material discrepancy between the location of the corner as restored or reestablished and the location of that corner as previously restored or reestablished by distance and direction. Show the discrepancy on the plan view drawing under (d), above. Show the distances between the corner as previously restored or reestablished and (1) the corner as restored or reestablished, and (2) to at least 2 of the witness monuments shown on the drawing in (d), above.

See drawing below.

(f) Was the corner restored through acceptance of (1) an obliterated evidence location, or, (2) a found perpetuated location?

Restored through acceptance of a found perpetuated location.

(g&h) Was the corner reestablished through lost corner proportionate methods? If so, show the method, including the directions and distances to other public land survey corners used as evidence or used for proportioning in determining the corner location?



(1) I, William B. Cochrane
(type or print name) certify that the corner location shown on this record was determined by me or under my direction and control and that this U.S. Public Land Survey Monument Record is correct and complete to the best of my knowledge and belief of

William B. Cochrane August 28, 1989
Signature Date

Survey Requested by: Sam Hordie 2/8/90
District Ranger Date