



Stock No. 26273

U.S. PUBLIC LAND SURVEY MONUMENT RECORD

Index No. H, J-21

State of Wisconsin

County of Oneida } ss.

I, William B. Cochran, do hereby certify that on the 23rd day of September, 1986, I found evidence of the Witness Point corner of Between Sections 11 and 12, Township 38 North, Range 11 East, Fourth Principal Meridian, as described hereon; and that from this evidence I established a new monument and accessories as described hereon to perpetuate the original location of this corner.

Resident witnesses:

Tony Tillman

History of original corner establishment:

Original Government Survey in 1859 by William E. Daugherty. Dependent Resurvey in 1941 by Hugh B. Crawford. North between Sections 11 and 12, at 6.60 chains found a 1 inch dia. iron pipe, 12 inches above the ground. In place of pipe, set a concrete monument, 2 feet long, 6 inches in dia., 18 inches in the ground, with an iron post in center, and a brass cap mkd; T38N R11E, S11, S12, WP, 1941. From which the following bear: Hemlock, 8", N34°45'E, 88 lks., Hemlock, 6", N75°30'W, 24½ lks.

Description of corner evidence found:

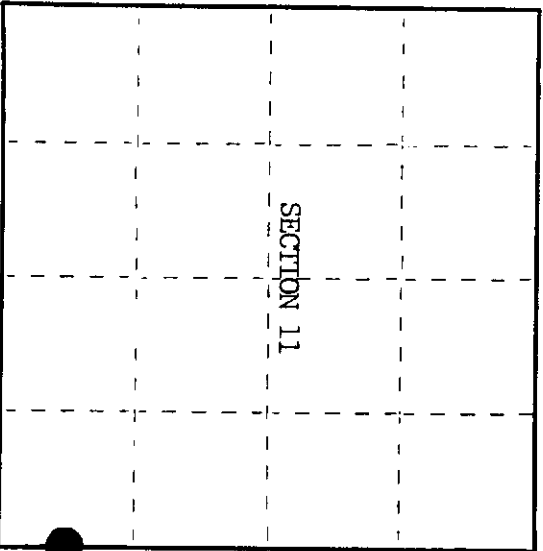
Found monument lying on shore from ice break-up and shore erosion.

Found the following bearing trees;

Hemlock, 13", N34°45'E, 58.08 feet, Hemlock, 8", N75°30'W, 16.17 feet

Description of monument and accessories I established to perpetuate the original location of this corner.

From bearing tree evidence, set a 1 inch diameter aluminum pipe monument, 5 feet long, 4½ feet in the ground, with an aluminum cap stamped; T38N R11E, S11, S12, WP, 1986, S-1107.



○ = Corner monument restored.

Dated at Hills, Wis., this 9th day of October, 1986

Signature *William B. Cochran* Title *Land Surveyor* Registration No. S-1107
(County Surveyor, Registered Land Surveyor, or other duly authorized official)

Office of Register of Deeds, County of _____, I hereby certify that the within instrument was filed in this office for record on the _____ day of _____, 19____ at _____ o'clock _____ M.

(Register of Deeds)

By _____ Deputy

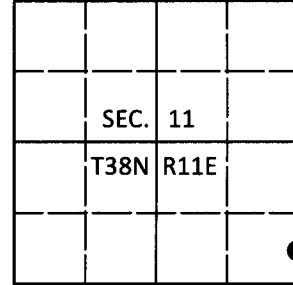
381110300

U.S. PUBLIC LAND SURVEY MONUMENT RECORD

Note: This form is intended and designed to fulfill all requirements of Wisconsin Administrative Code, Chapter A-E 7.08 U.S. Public Land Survey Monument Record (3)(a-i).

(a) CORNER LOCATION
 Witness Point of Secs. 11 & 12
 Township 38 North
 Range 11 East of the 4th P.M.
 Town of Three Lakes
 County of Oneida

WISCORS - Oneida County
 N: 218,252.34 USft
 E: 351,123.75 USft WCWP
 Datum: NAD 83(2011)
 GNSS Method: RTN - Offset
 GNSS Control: WISCORS VRS



(b) HISTORY OF ORIGINAL CORNER ESTABLISHMENT

Original Surveyor:

Original Accessories:

Date of Survey Commenced:
 Completed:

See previous USPLS Monument Record

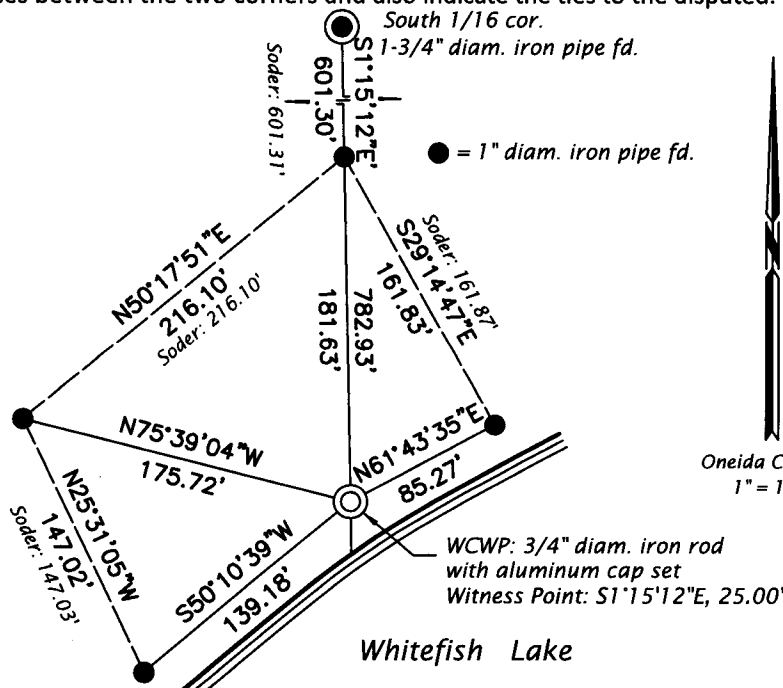
(b)(f)(g)(h) Description of monument found at this corner and if it was accepted, state all evidence (material, testimonial, occupational, plats, records, other monuments) used as a basis for accepting. If not accepted or if nothing was found, state evidence used as basis for establishing location. If re-established through lost corner proportionate methods, indicate all monuments, distances and directions used to establish. Indicate type of monument and sign post found or set.

This is a perpetuation of a previous USPLS Monument Record by William B. Cochrane, RLS dated October 9, 1986 and filed in the office of the Oneida County Register of Deeds. A complete history of the corner can be found on the previous monument record. I accept the previous location as a true and faithful perpetuation or reestablishment of the original corner location and further perpetuate it as follows.

March 22, 2018: I found the record 1" diam. aluminum monument projecting 24" and leaning badly near the high water mark of Whitefish Lake. Based on the original description, it's clear the monument has been disturbed to some degree. I found the cut stumps of both record bearing trees. To establish a witness corner to the witness point, I retraced CSM No. 2833 and OCS Map No. A-1105 and set a 3/4" diam., 24" long iron rod with aluminum cap flush with the ground surface as shown below. I was unable to set a sign post due to frost.

The coordinate value shown has been verified by at least one of the following methods: 1) comparison to a previously GPS determined published value; 2) the value is the average of two or more GPS observations at a markedly different time; 3) one or more distances were measured back to the GPS observed corner from temporary GPS observed offset locations.

(c)(d)(e) Plan view of corner with ties to at least 4 witness monuments. If in disagreement with previously established corner, show the distances between the two corners and also indicate the ties to the disputed.



REGISTER OF DEEDS OFFICE
 ONEIDA COUNTY
 FILED

APR 12 2018

KYLE J. FRANSON
 REGISTER OF DEEDS

(i) I, Jeffrey W. Austin, Professional Land Surveyor No. S-1885, hereby certify that the corner location on this record was determined by me or under my direction and control and that this U.S. Public Land Survey Monument Record is correct and complete to the best of my knowledge and belief.

[Handwritten Signature]

 Signature

4 APR 2018

 Date