

CERTIFIED LAND CORNER RESTORATION

State of Wisconsin }
County of Oneida } ss.

I, Jean F. Desvick, do hereby certify that on the 26th day of Oct., 1981, I found evidence of the East quarter corner of section 11 Township 38 North, Range 11 East, Fourth Principal Meridian, as described hereon; and that from this evidence I established a new monument and accessories as described hereon to perpetuate the original location of this corner:

Description of original monument and accessories and subsequent restorations:

Surveyed in 1859 by William J. Daugherty
Dependent Resurvey in 1917 by Hugh B. Crawford
Set concrete monument, 24" long, 6" in diameter, on brass cap stamped 17, S11, S12, 1941.
Hemlock 10, 51, 15.5 lbs.
White Birch, 52' 45" w, 1 lbs.
U.S. Forest Service in 1962 found: monument as described.
White Pine 13, 201", scribed, (recorded as 11 mile)
White Birch snag, 52' 45"
Blazed and scribed white Birch 12, 318", 209.3 feet. Set 4X4 post, 2' 2" mon in 1962.

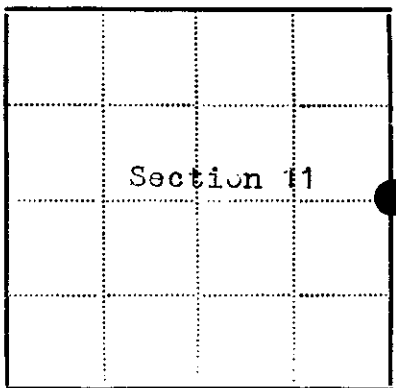
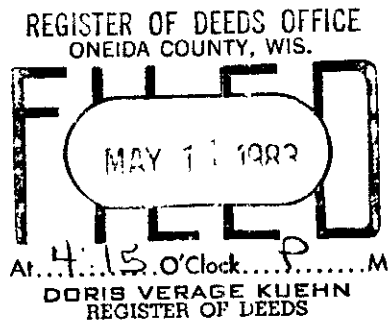
October 26, 1981, found monument as described and flush with the ground.
White Birch 13, dead, S 10 w, 209.3 feet
White Birch snag gone
White Pine 21", N 51 E, 100 feet.
4 X 4 post Sw of Monument.

Description of monument and accessories I established to perpetuate the location of this corner:

Blazed and scribed a new bearing tree:
Jack Pine 8", N 43 w., 32.13 feet.

Compared with all record data & accepted as correct.

J. Desvick
Oneida County Surveyor 27 Apr 1983



● - Corner monument restored
□ -

Resident witnesses.....

Dated at Rhineland Wisconsin, this 27 day of Oct. 1981.

Signature *Jean F. Desvick* Title R.L.S.
(County Surveyor, Registered Land Surveyor, or other duly authorized official)

Surveyors Registration No. S-802

Office of..... County of.....

I hereby certify that the within instrument was filed in this office for record on the..... day of..... 19....., and was filed in Book No. Page No. of County Records.

Signature..... Title.....

Township 38 north, Range 11 East, Section 11, Index No. 4 - 21, Page No.....

6-21



Stock No. 26273

U.S. PUBLIC LAND SURVEY MONUMENT RECORD

Index No. G-21

State of Wisconsin } ss.
County of Oneida

I, JAMES R. BROTHMAN, do hereby certify that on the 9th day of October, 1986, I found evidence of the One-Quarter corner of Sections 11 and 12 Township 38, North, Range 11 East, Fourth Principal Meridian, as described hereon; and that from this evidence I established a new monument and accessories as described hereon to perpetuate the original location of this corner.

Resident witnesses: NONE

History of original corner establishment: Original survey in 1859 by William E. Daugherty. Dependent resurvey in 1941 by Hugh B. Crawford. Set a concrete monument 24 inches long, 6 inch diameter, 18 inches in the ground with an iron post, 23 inches long, 1 inch diameter embedded in the center with brass cap marked:

1/4 S11 | S12 From which the following bear:

1941 Hemlock 10" N51°E 151-1/2 lks
White Birch 8" N52-3/4°W 78 lks

Description of corner evidence found:

G.L.O. monument as described and in place. The following bearing trees,

Hemlock 16" N26°E 88.60 feet
White Pine 20" N55°E 99.93 feet
Balsam 8" N41°W 31.82 feet
Balsam 9" S43°W 6.28 feet

Description of monument and accessories I established to perpetuate the original location of this corner. Corner in good condition. Blazed, scribed, painted and posted the following new bearing trees:

White Pine 20" North 7.60 feet
Hemlock 16" N54°W 27.02 feet
Red Pine 5" S49°E 40.25 feet
Balsam 9" S12°W 38.12 feet
Steel sign post North 1.50 feet

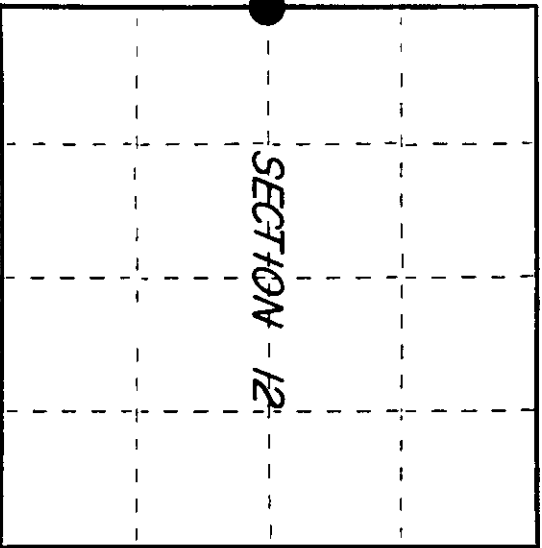
Dated at Portage Wis., this 5 day of December, 1986

Signature James R. Brothman Title Land Surveyor Registration No. 1321
(County Surveyor/Registered Land Surveyor, or other duly authorized official)

Office of Register of Deeds, County of Oneida, I hereby certify that the within instrument was filed in this office for record on the 19 day of October, 1986 at 10:00 clock A.M.

(Register of Deeds)

By: Deputy



○ = Corner monument restored.

381112000

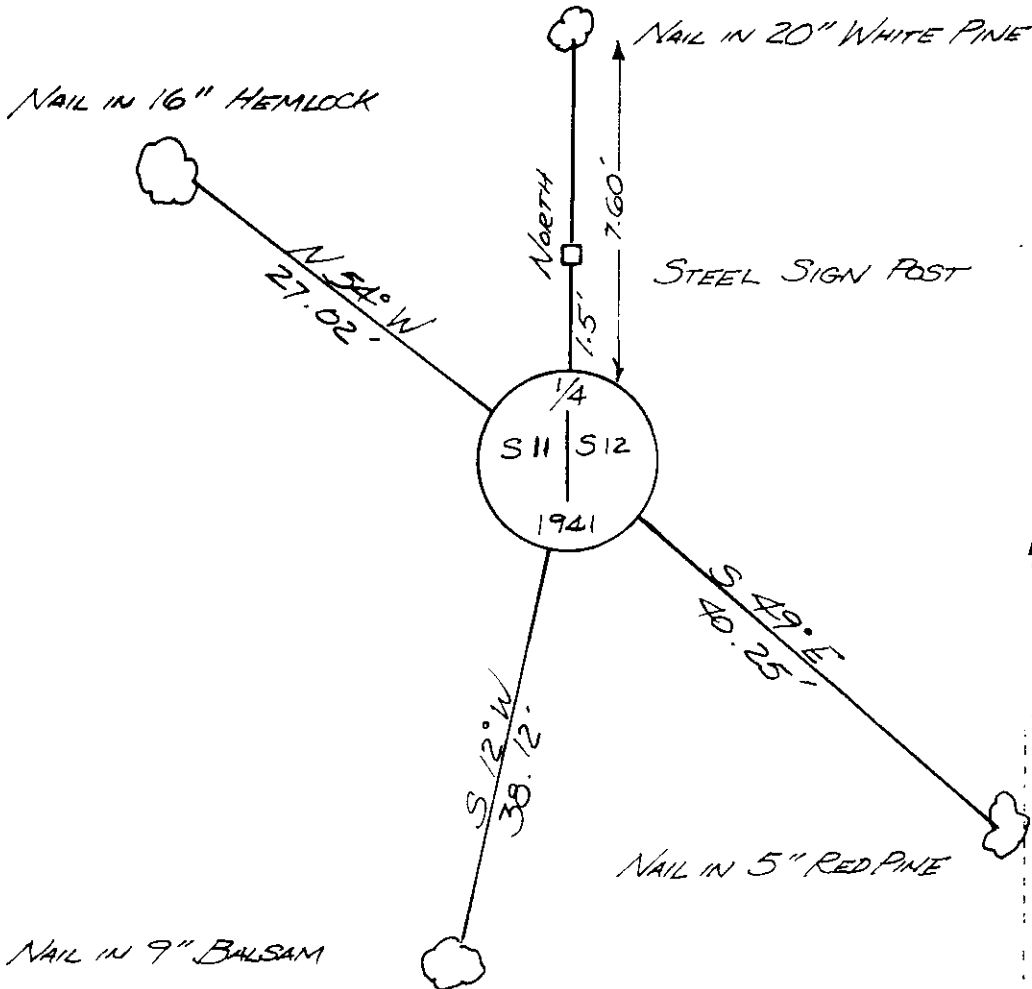
(e) Describe any material discrepancy between the location of the corner as restored or reestablished and the location of that corner as previously restored or reestablished by distance and direction. Show the discrepancy on the plan view drawing under (d), above. Show the distances between the corner as previously restored or reestablished and (1) the corner as restored or reestablished, and (2) to at least 2 of the witness monuments shown on the drawing in (d), above.

See drawing below.

(f) Was the corner restored through acceptance of (1) an obliterated evidence location, or, (2) a found perpetuated location?

Corner was restored through acceptance of a found perpetuated location.

(g&h) Was the corner reestablished through lost corner proportionate methods? If so, show the method, including the directions and distances to other public land survey corners used as evidence or used for proportioning in determining the corner location?



REGISTER OF DEEDS OFFICE
ONEIDA COUNTY, WIS.
FILED
APR 8 1991
At _____ O'Clock _____ M
THOMAS H. LEIGHTON
REGISTER OF DEEDS

Affix Land Surveyor Seal

 WISCONSIN
 JAMES R. GROTHMAN
 S-1321
 PORTAGE
 WI
 LAND SURVEYOR

(1) I, JAMES R. GROTHMAN, Registered Land Surveyor No. 1321

[type or print name] certify that the corner location shown on this record was determined by me or under my direction and control and that this U.S. Public Land Survey Monument Record is correct and complete to the best of my knowledge and belief.

James R. Grothman 12/5/86
Signature Date

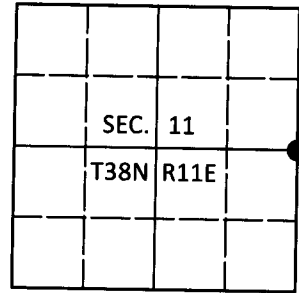
Certificate ready for filing: D. Frank Hulvey 1/6/87
District Ranger Date

U.S. PUBLIC LAND SURVEY MONUMENT RECORD

Note: This form is intended and designed to fulfill all requirements of Wisconsin Administrative Code, Chapter A-E 7.08 U.S. Public Land Survey Monument Record (3)(a-i).

(a) CORNER LOCATION
 1/4 Cor. of Secs. 11 & 12
 Township 38 North
 Range 11 East of the 4th P.M.
 Town of Three Lakes
 County of Oneida

WISCRS - Oneida County
 N: 220,280.41 USft
 E: 351,078.57 USft
 Datum: NAD 83(2011)
 GNSS Method: RTN - Direct
 GNSS Control: WISCORS VRS



(b) HISTORY OF ORIGINAL CORNER ESTABLISHMENT

Original Surveyor:

Original Accessories:

Date of Survey Commenced:
 Completed:

See previous USPLS Monument Record

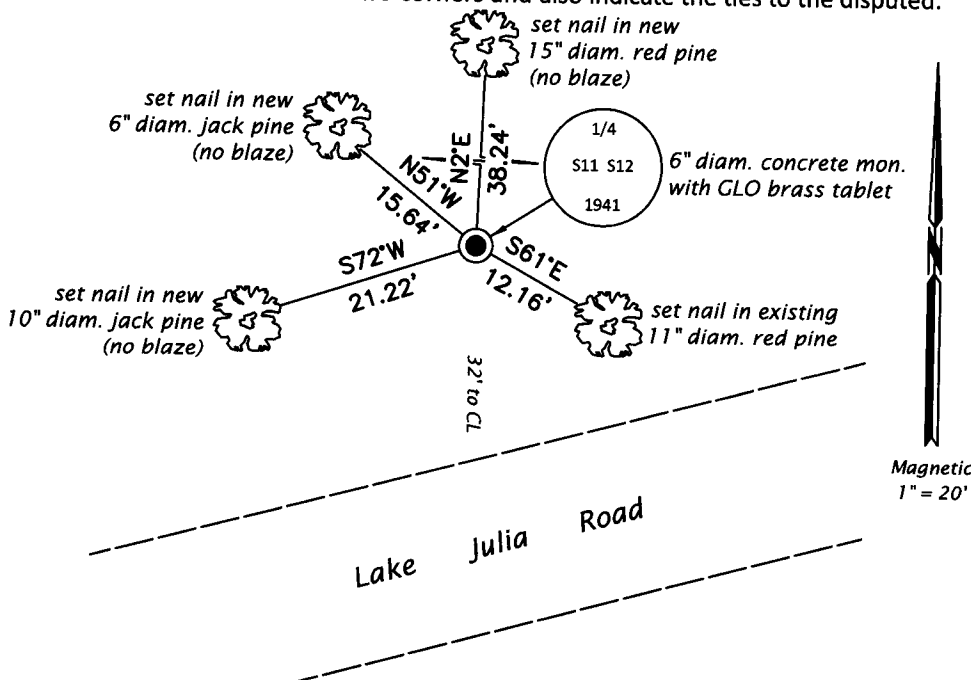
(b)(f)(g)(h) Description of monument found at this corner and if it was accepted, state all evidence (material, testimonial, occupational, plats, records, other monuments) used as a basis for accepting. If not accepted or if nothing was found, state evidence used as basis for establishing location. If re-established through lost corner proportionate methods, indicate all monuments, distances and directions used to establish. Indicate type of monument and sign post found or set.

This is a perpetuation of a previous USPLS Monument Record by James R. Grothman, RLS dated December 5, 1986 and filed in the office of the Oneida County Register of Deeds. A complete history of the corner can be found on the previous monument record. I accept the previous location as a true and faithful perpetuation or reestablishment of the original corner location and further perpetuate it as follows.

March 21, 2018: I found and accepted the record monument, a 6" diam. concrete monument with a 2-1/2" diam. GLO brass tablet flush with the ground surface. I could not make sense of the record bearing trees, they appear to be for a different corner. I found or established accessories as shown below and found a USFS steel sign post bearing North 1.5 ft. dist.

The coordinate value shown has been verified by at least one of the following methods: 1) comparison to a previously GPS determined published value; 2) the value is the average of two or more GPS observations at a markedly different time; 3) one or more distances were measured back to the GPS observed corner from temporary GPS observed offset locations.

(c)(d)(e) Plan view of corner with ties to at least 4 witness monuments. If in disagreement with previously established corner, show the distances between the two corners and also indicate the ties to the disputed.

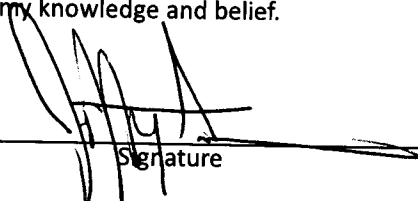


REGISTER OF DEEDS OFFICE
 ONEIDA COUNTY
 FILED

APR 12 2018

KYLE J. FRANSON
 REGISTER OF DEEDS

(i) I, Jeffrey W. Austin, Professional Land Surveyor No. S-1885, hereby certify that the corner location on this record was determined by me or under my direction and control and that this U.S. Public Land Survey Monument Record is correct and complete to the best of my knowledge and belief.


 Signature

4 APR 2018
 Date