

Stock No. 26273

U.S. PUBLIC LAND SURVEY MONUMENT RECORD

Index No. J-25

State of Wisconsin } ss. County of Oneida

I JAMES R. GROTHMAN do hereby certify that on the 9th day of October 19 86, I found evidence of the Section corner of Sections 7, 12, 13, 18 Township 38 North, Range 11.8 12 East, Fourth Principal Meridian, as described hereon; and that from this evidence I established a new monument and accessories as described hereon to perpetuate the original location of this corner. Resident witnesses: None

History of original corner establishment: Original survey in 1858 by Alfred Millard. Dependent resurvey in 1937 by Wesson Cook. At 39.87 chains set a concrete monument, 24 inches long, 6 inch diameter, 22 inches in the ground with a brass cap marked:

T38N		From which the following bear:	
R11E	R12E	Hemlock stump hole	N43°E 15 lks
S12	S7	Hemlock stump hole	S24°W 18 lks
S13	S18	Hemlock stump	S85°W 16 lks
1937		Birch	5" S35-1/2°E 57 lks

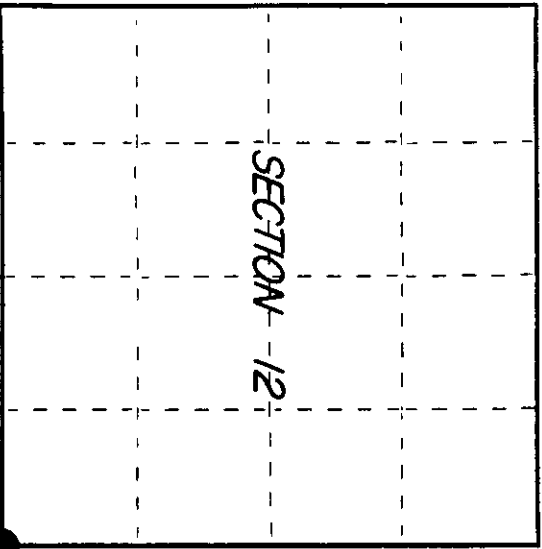
Description of corner evidence found: G.L.O. monument as described and in place.

The following bearing trees: Sugar Maple 10" N42°E 22.23 feet; Red Pine 9" S35°E 32.16 feet; Red Pine 9" S61°W 19.41 feet

Description of monument and accessories I established to perpetuate the original location of this corner.

Corner in good condition. Blazed, scribed, painted, and posted all found bearing trees and the following new bearing trees:

Sugar Maple	12"	N19°W	43.36 feet
Steel sign post		South	1.00 foot



○ = Corner monument restored.

Dated at DOETRAGE Wis, this 5 day of DECEMBER, 19... Signature: LAMON BUEYOR (County Surveyor, Registered Land Surveyor, or other duly authorized official) Office of Register of Deeds, County of... I hereby certify that the within instrument was filed in this office for record on the... day of... at... o'clock... M.

(Register of Deeds)

By... Deputy

381120000

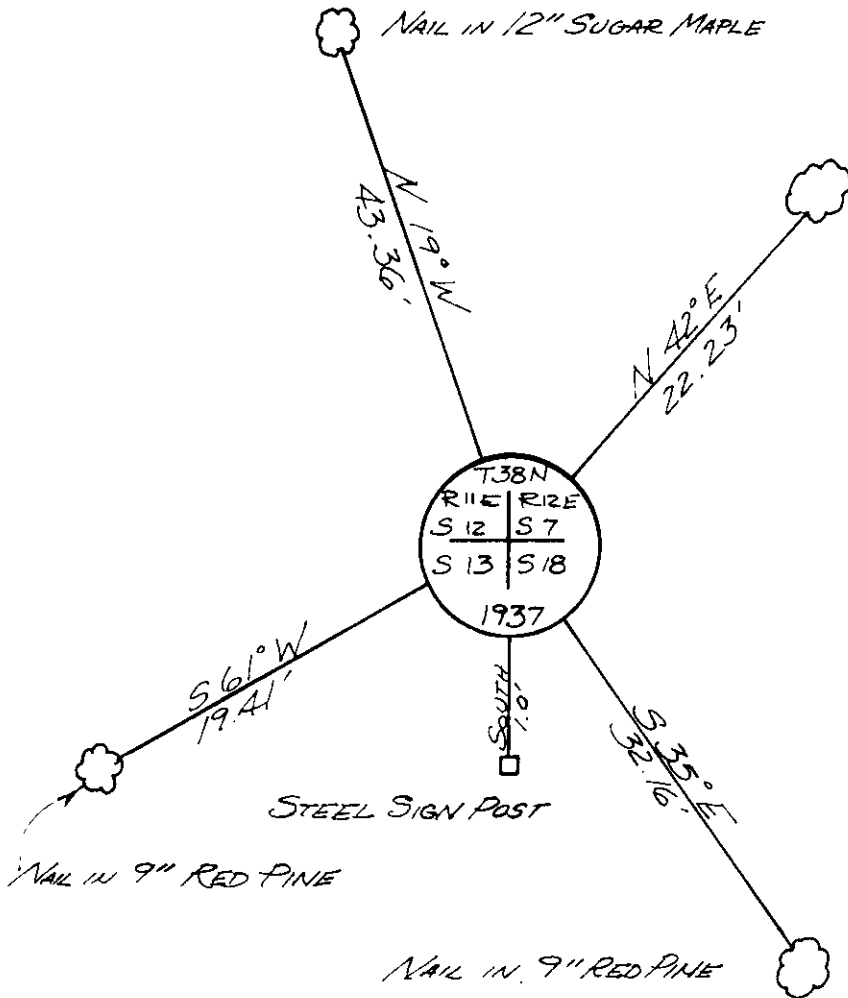
(d) Describe any material discrepancy between the location of the corner as restored or reestablished and the location of that corner as previously restored or reestablished by distance and direction. Show the discrepancy on the plan view drawing under (d), above. Show the distances between the corner as previously restored or reestablished and (1) the corner as restored or reestablished, and (2) to at least 2 of the witness monuments shown on the drawing in (d), above.

See drawing below

(f) Was the corner restored through acceptance of (1) an obliterated evidence location, or, (2) a found perpetuated location?

Corner was restored through acceptance of a found perpetuated location.

(g&h) Was the corner reestablished through lost corner proportionate methods? If so, show the method, including the directions and distances to other public land survey corners used as evidence or used for proportioning in determining the corner location?



REGISTER OF DEEDS OFFICE
ONEIDA COUNTY, WIS.
FILED
APR 8 1991
At _____ O'Clock _____ M
THOMAS H. LEIGHTON
REGISTER OF DEEDS

Affix Land Surveyor Seal

(1) I, JAMES R. GROTHMAN, Registered Land Surveyor No. 1321 (type or print name) certify that the corner location shown on this record was determined by me or under my direction and control and that this U.S. Public Land Survey Monument Record is correct and complete to the best of my knowledge and belief.

James R. Grothman 12/5/86
Signature Date

Certificate ready for filing: R. Frank Hulby 1/6/87
District Ranger Date