

CERTIFIED LAND CORNER RESTORATION

State of Wisconsin }
County of Oneida } ss.

I Jean F. Resvick, do hereby certify that on the 26 day of Oct., 19 01, I found evidence of the South Quarter corner of section 12 Township 30 North, Range 11 East, Fourth Principal Meridian, as described hereon; and that from this evidence I established a new monument and accessories as described hereon to perpetuate the original location of this corner:

Description of original monument and accessories and subsequent restorations:

Surveyed in 1859 by William E. Daugherty.
Dependent Resurvey in 1941 by Hugh B. Crawford.
Set concrete Monument, 24 long, 6" in diameter, with brass cap stamped S12, 1/4, S13, 1941
Maple 4, W 66 3/4 W, 37 lks.
White Birch 6, S 27 1/2 W, 6 1/2 lks.
Local Corner, sand point, south, 4 lks.
U.S. Forest Service in 1962, found monument as described and the 2 Bearing trees.
Placed and scribed Red Pine 13, S 48 1/2 W, 31.3 feet
Center line of Forest Road 2103, N 69 E, 3, feet

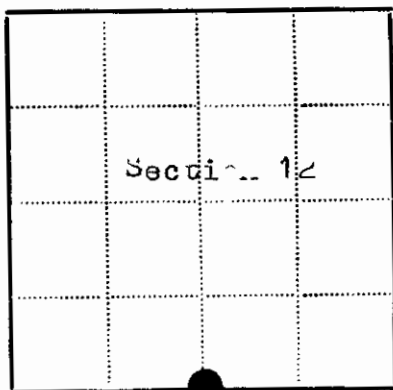
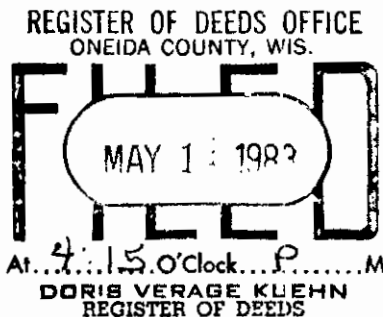
Description of corner evidence found:

Monument found as described.
Maple 11, W 66 3/4 W, 24.4 feet.
White Birch 10, S 27 1/2 W, 5. feet.
Red pine 21, S 48 1/2 W, 31.0 feet.

Description of monument and accessories I established to perpetuate the location of this corner:
I added no new accessories.

Compared with all record data & accepted as correct.

Signature of Oneida County Surveyor dated 27 Apr 1983



Legend: Black dot = Corner monument restored, Square =

Resident witnesses

Dated at Rhineland Wisconsin, this 27 day of Oct. 1981.

Signature of Jean F. Resvick, County Surveyor, Registered Land Surveyor, or other duly authorized official

Surveyors Registration No. S-002

Office of County of

I hereby certify that the within instrument was filed in this office for record on the day of 19, and was filed in Book No. Page No. of County Records.

Signature Title

Township 30 North, Range 11 East, Section 12, Index No. -23, Page No.

5-23

U.S. PUBLIC LAND SURVEY MONUMENT RECORD

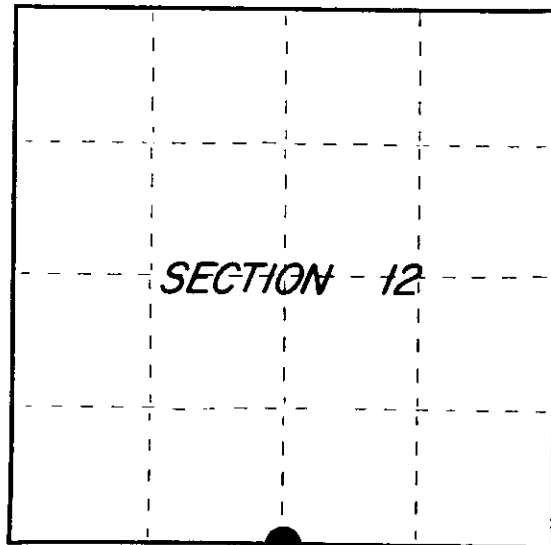
Index No. J-23

State of Wisconsin }
 County of Oneida } ss.

I, JAMES R. GROTHMAN, do hereby certify that on the 9th day of October, 1986, I found evidence of the One Quarter corner of Sections 12 and 13 Township 38 North, Range 11 East, Fourth Principal Meridian, as described hereon; and that from this evidence I established a new monument and accessories as described hereon to perpetuate the original location of this corner.

Resident witnesses:

None



○ = Corner monument restored.

History of original corner establishment: Original survey in 1859 by William E. Daugherty. Dependent resurvey in 1941 by Hugh B. Crawford. At 42.52 chains set a concrete monument 24 inches long, 6 inch diameter, 18 inches in the ground with an iron post 23 inches long, 1 inch diameter embedded in the center with a brass cap marked:

1/4 <u>S12</u> S13	From which the following bear:		
1941	Hemlock Stump	S11°E	171ks
	Maple	N66-3/4°W	37 lks
	White Birch	S27-1/2°W	86-1/2 lks

Description of corner evidence found: G.L.O. monument as described and in place. The following bearing trees:

Red Pine	18"	S40°E	31.38 feet
White Birch	16"	S27°W	57.10 feet
Red Maple	12"	N68°W	24.12 feet

Description of monument and accessories I established to perpetuate the original location of this corner.

Corner in good condition. Blazed, scribed, painted, and posted all found bearing trees and the following new bearing trees:

Red Pine	5"	S32°W	41.09 feet
Steel Sign Post		South	1.00 foot

Dated at Portage, Wis., this 30 day of OCTOBER, 1986.

Signature James R. Grothman Title RLS Registration No. 1321
 (County Surveyor, Registered Land Surveyor, or other duly authorized official)

Office of Register of Deeds, County of _____, I hereby certify that the within instrument was filed in this office for record on the _____ day of _____, 19____ at _____ o'clock _____ M.

(Register of Deeds)

By _____ Deputy

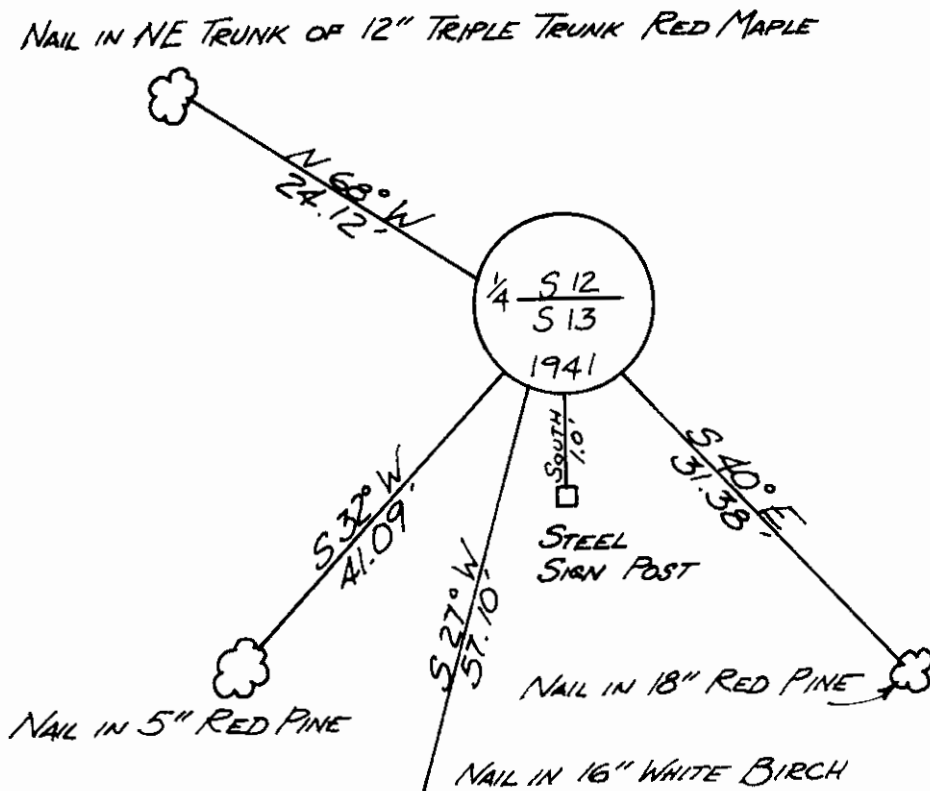
(c) Describe any material discrepancy between the location of the corner as restored or reestablished and the location of that corner as previously restored or reestablished by distance and direction. Show the discrepancy on the plan view drawing under (d), above. Show the distances between the corner as previously restored or reestablished and (1) the corner as restored or reestablished, and (2) to at least 2 of the witness monuments shown on the drawing in (d), above.

See drawing below

(f) Was the corner restored through acceptance of (1) an obliterated evidence location, or, (2) a found perpetuated location?

Corner was restored through acceptance of a found perpetuated location.

(g&h) Was the corner reestablished through lost corner proportionate methods? If so, show the method, including the directions and distances to other public land survey corners used as evidence or used for proportioning in determining the corner location?



REGISTER OF DEEDS OFFICE
ONEIDA COUNTY, WIS.
FILED
APR 8 1991
At _____ O'Clock _____ M
THOMAS H. LEIGHTON
REGISTER OF DEEDS

Affix Land Surveyor Seal

(1) JAMES R. GROTHMAN, Registered Land Surveyor No. 1321
(type or print name) certify that the corner location shown on this record was determined by me or under my direction and control and that this U.S. Public Land Survey Monument Record is correct and complete to the best of my knowledge and belief.

James R. Grothman 10/30/86
Signature Date

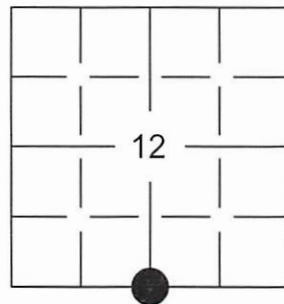
Certificate ready for filing: *N. Frank Haulby* 1/6/87
District Ranger Date

U S PUBLIC LAND SURVEY MONUMENT RECORD

NOTE: This form is intended and designed to fulfill all requirements of Wisconsin Administrative Code, Chapter A-E 7.08 U.S. Public Land Survey Monument Record (3) (a-i)

(a) CORNER LOCATION
 SOUTH 1/4 CORNER OF SECTION 12
 TOWNSHIP 38 NORTH
 RANGE 11 EAST OF THE 4TH PM
 TOWN OF THREE LAKES
 COUNTY OF ONEIDA

WISCRS - ONEIDA COUNTY
 N: 217550.483 USft
 E: 353976.134 USft
 Datum: NAD83 (2011)
 GNSS Method RTN - Direct
 GNSS Control WISCORS VRS



(b) HISTORY OF ORIGINAL CORNER ESTABLISHMENT

Original Surveyor: WILLIAM E. DAUGHERTY

Original Accessories:

Date of Survey

Commenced: AUG. 1859
 Completed: SEPT. 1859

See previous USPLS Monument Record

(b)(f)(g)(h) Description of monument found at this corner and if it was accepted, state all evidence (material, testimonial, occupational, plats, records, other monuments) used as a basis for accepting. If not accepted or if nothing was found, state evidence used as basis for establishing location. If re-established through lost corner proportionate methods, indicate all monuments, distances and directions used to establish. Indicate type of monument and sign post found or set.

1941 - HUGH B. CRAWFORD PERFORMED A DEPENDENT RESURVEY, SET A CONCRETE MONUMENT WITH BRASS CAP AND REFERENCED WITH BEARING TREES:

HEMLOCK STUMP, S11°E, 17LKS 4" MAPLE, N66.75°W, 37LKS
 6" WHITE BIRCH, S27.5°W, 86.5LKS SANDPOINT, SOUTH, 4LKS

1962 - USFS FOUND MONUMENT, AND MADE FOLLOWING BEARING TREES:

13" RED PINE, S40.5°E, 31.3' CENTERLINE OF ROAD, N69°E, 35'

1983 - JEAN RESVICK, USFS SURVEYOR FOUND MONUMENT AS DESCRIBED AND VERIFIED TIES:

14" MAPLE, N66.75°W, 24.4' 16" WHITE BIRCH, S27.5°W, 57'
 26" RED PINE, S40.5°E, 31.3'

1986 - JAMES R. GROTHMAN, WORKING FOR THE USFS. FOUND GLO MONUMENT WITH BEARING TREES:

18" RED PINE, S40°E, 31.38' 16" WHITE BIRCH, S27°W, 57.10'
 12" MAPLE, N68°W, 24.12'

AND MADE THE FOLLOWING NEW TIES

5" RED PINE, S32°W, 41.09' STEEL SIGN POST, SOUTH, 1.00'

2020 - I FOUND MONUMENT AS DESCRIBED AND REFERENCED BELOW. DUE TO CONSTRUCTION IN THE AREA, TREES MAY BE CUT AND NEW WITNESS WERE MADE.

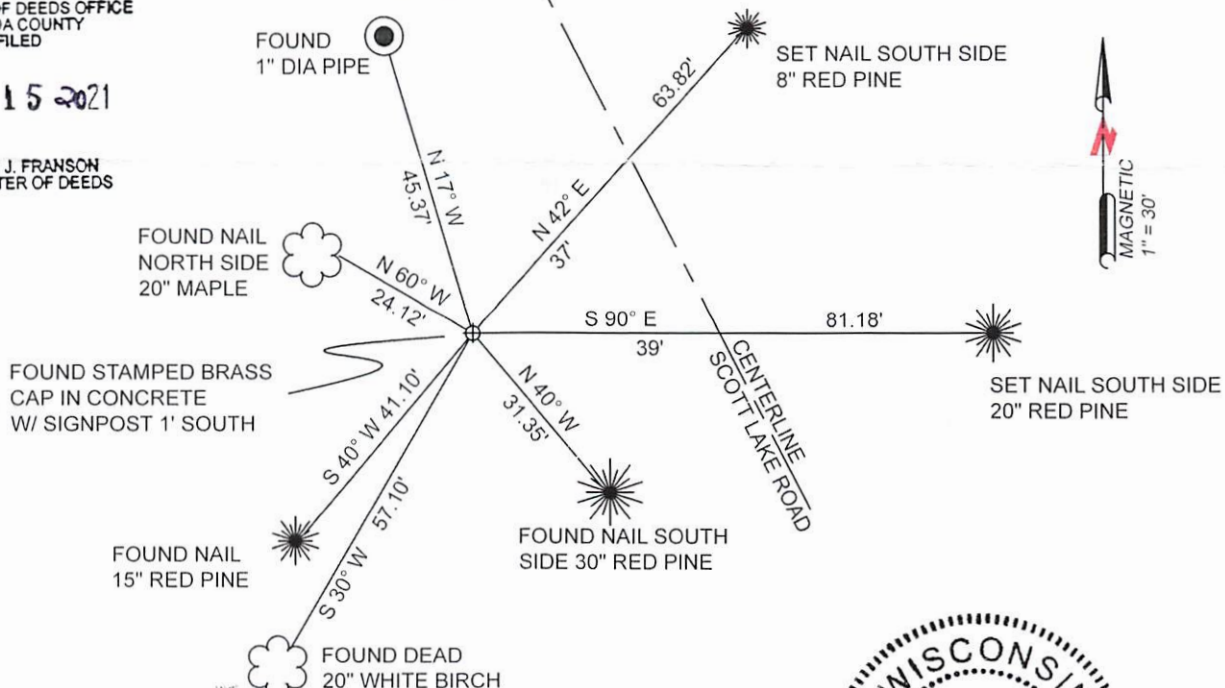
The coordinate value shown has been verified by at least one of the following methods: 1) comparison to a previously GPS determined published value, 2) the value is the average of two or more GPS observations at a markedly different time; 3) one or more distances were measured back to the GPS observed corner from temporary GPS observed offset locations.

(c)(d)(e) Plan view of corner with ties to at least 4 witness monuments. If in disagreement with previously established corner, show the distances between the two corners and also indicate the ties to the disputed.

REGISTER OF DEEDS OFFICE
 ONEIDA COUNTY
 FILED

JAN 15 2021

KYLE J. FRANSON
 REGISTER OF DEEDS



(i) I, James E Anderson, Professional Land Surveyor No. S-3127, hereby certify that the corner location on this record was determined by me or under my direction and control and that this U.S. Public Land Survey Monument Record is correct and complete to the best of my knowledge, and belief



James E. Anderson

11/27/2020

SIGNATURE

DATE