

Stock No. 26273

U.S. PUBLIC LAND SURVEY MONUMENT RECORD

Index No. G-11-25

State of Wisconsin

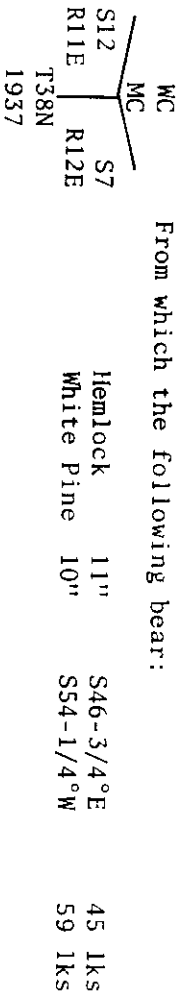
County of Oneida } ss.

I, JAMES R. GROTHMAN, do hereby certify that on the 9th day of October, 1986, I found evidence of the Witness Meander corner of Sections 7 and 12 Township 38, North, Range 11 & 12 East, Fourth Principal Meridian, as described hereon; and that from this evidence I established a new monument and accessories as described hereon to perpetuate the original location of this corner.

Resident witnesses:

None

History of original corner establishment: Original survey in 1858 by Alfred Millard. Dependent resurvey in 1937 by Wesson Cook. At 29.94 chains set a concrete monument 24 inches long, 6 inches in diameter, 22 inches in the ground with a brass cap marked:



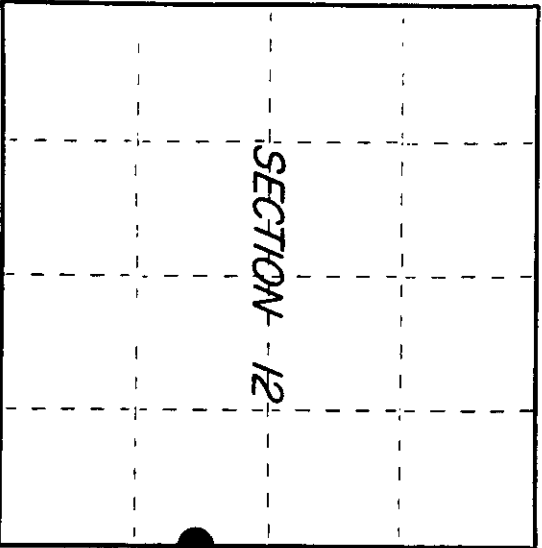
Description of corner evidence found:

G.L.O. monument as described and in place. The following bearing trees:

Hemlock	15"	S46°E	29.70 feet
White Pine	14"	S54°W	38.94 feet

Description of monument and accessories I established to perpetuate the original location of this corner. Corner in good condition. Blazed, scribed, painted and posted all found bearing trees and the following new bearing trees:

White Pine	29"	S7°W	16.70 feet
NW corner of concrete foundation of 8'x16' shed		S58°E	23.73 feet



○ = Corner monument restored.

Dated at Portage Wis., this 5 day of DECEMBER, 1986

Signature: James R. Grothman Title: Land Surveyor Registration No. 1521 (County Surveyor, Registered Land Surveyor, or other duly authorized official)

Office of Register of Deeds, County of Oneida. Instrument was filed in this office for record on the 19th day of December, 1986, at 10:00 o'clock P.M. I hereby certify that the within

(Register of Deeds)

By: Deputy

391112 1500

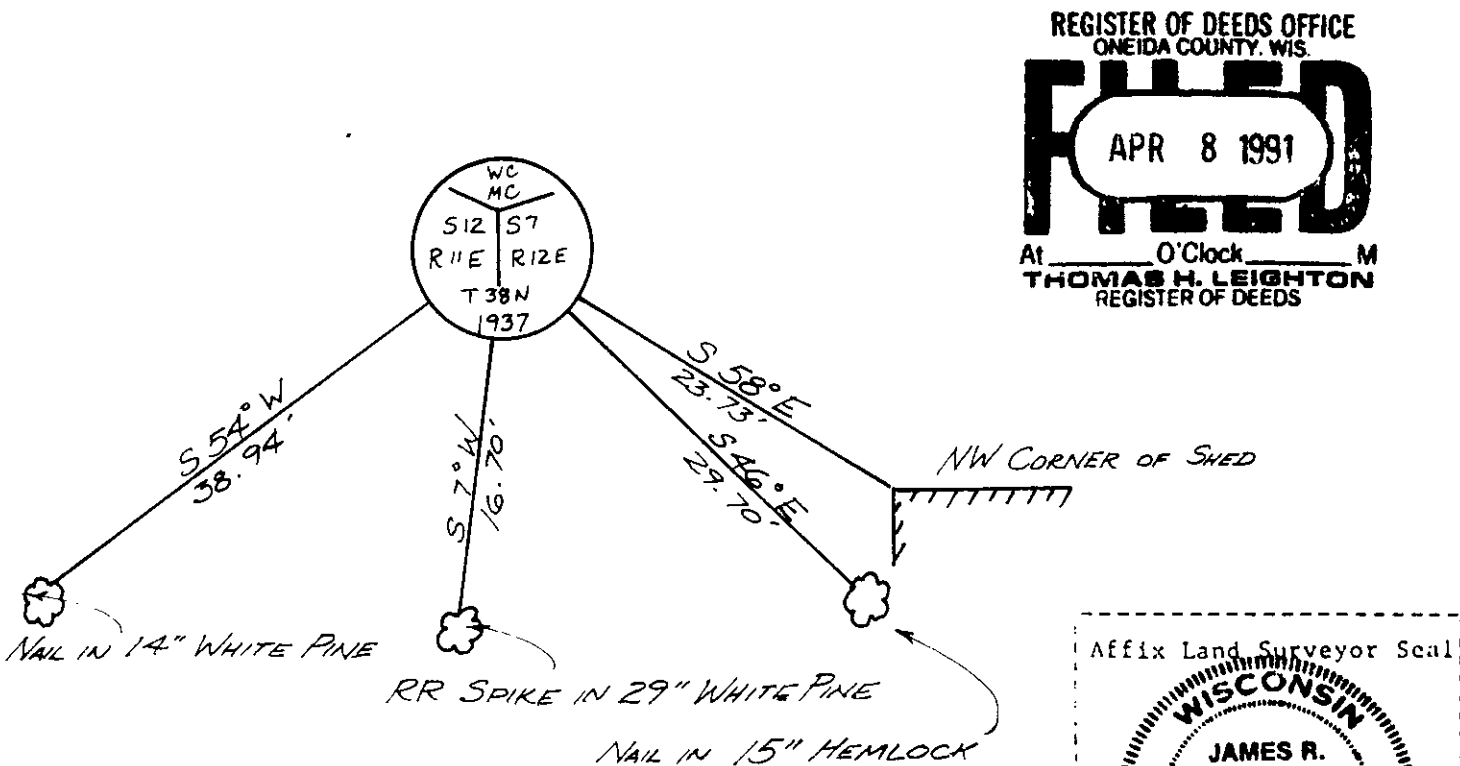
(j) Describe any material discrepancy between the location of the corner as restored or reestablished and the location of that corner as previously restored or reestablished by distance and direction. Show the discrepancy on the plan view drawing under (d), above. Show the distances between the corner as previously restored or reestablished and (1) the corner as restored or reestablished, and (2) to at least 2 of the witness monuments shown on the drawing in (d), above.

See drawing below

(f) Was the corner restored through acceptance of (1) an obliterated evidence location, or, (2) a found perpetuated location?

Corner was restored through acceptance of a found perpetuated location.

(g&h) Was the corner reestablished through lost corner proportionate methods? If so, show the method, including the directions and distances to other public land survey corners used as evidence or used for proportioning in determining the corner location?



REGISTER OF DEEDS OFFICE
ONEIDA COUNTY, WIS.
FILED
APR 8 1991
At _____ O'Clock _____ M
THOMAS H. LEIGHTON
REGISTER OF DEEDS

Affix Land Surveyor Seal

(i) I, JAMES R. GROTHMAN, Registered Land Surveyor No. 1321
(type or print name) certify that the corner location shown on this record was determined by me or under my direction and control and that this U.S. Public Land Survey Monument Record is correct and complete to the best of my knowledge and belief.

James R. Grothman 12/5/86
Signature Date

Certificate ready for filing: W. Frank Haubey 1/6/87
District Ranger Date

Stock No. 26273

U.S. PUBLIC LAND SURVEY MONUMENT RECORD

Index No. G.H-25

State of Wisconsin } ss.
County of Oneida

I Milo E. Stefan, do hereby certify that on the 10th day of October, 19.88, I found evidence of the Witness Corner Meander corner of Sections 7 and 12 Township 38 North, Range 11 & 12 East, Fourth Principal Meridian, as described hereon; and that from this evidence I established a new monument and accessories as described hereon to perpetuate the original location of this corner.

Resident witnesses:

Jeffrey L. Kennedy

Myron L. Smith

Jeanne M. Stefan

History of original corner establishment:

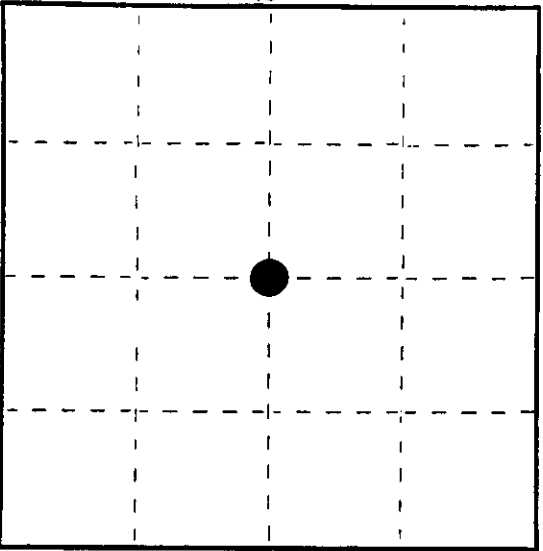
1937 G.L.O. established this Witness Corner to the Meander Corner which now falls .38 chains northerly in Julia Lake.
G.L.O. set a 6" x 24" concrete monument with two BTs:
11" Hemlock, S46 3/4°E, 45 links (29.70')
10" White Pine, S54 1/4°W, 59 links (38.94')

Description of corner evidence found:

Both BTs are in good condition. Monument has been moved by activity along the shore. It is 1.53 feet too far southerly as pulled from the bearing trees.

Description of monument and accessories I established to perpetuate the original location of this corner.

We reset the G.L.O. monument in it's proper location as pulled from the two 1937 bearing trees. We also set a steel sign post and made one new bearing object:
Northwest Corner of Boat House, S52°E, 25.08'
6' Steel Sign Post, West, 2.3'



O = Corner monument restored.

Dated at Rhinelander, Wis., this 15th day of November, 1988

Signature: *Milo E. Stefan* Title: Land Surveyor Registration No. S-1558
(County Surveyor, Registered Land Surveyor, or other duly authorized official)

Office of Register of Deeds, County of _____, I hereby certify that the within instrument was filed in this office for record on the _____ day of _____, 19____ at _____ o'clock _____ M.

(Register of Deeds)

By _____ Deputy

