

U.S. PUBLIC LAND SURVEY MONUMENT RECORD

JUN 01 2017

Note: This form is intended and designed to fulfill all requirements of the Wisconsin Administrative Code, Chapter A-E 7.08 U.S. Public Land Monument Record (3)(a)(b)(c)(d)(e)(f)(g)(h)(i). An additional sheet may be added if necessary to conform with said requirements.

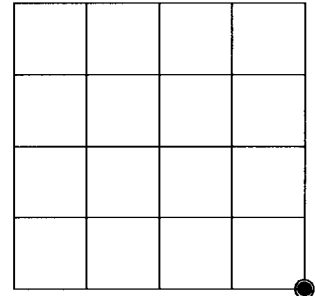
AT _____ O'CLOCK _____ M
KYLE J. FRANSON
REGISTER OF DEEDS

(a) CORNER LOCATION: WISCRS - Oneida County
 Southeast Corner of Section 13
 Township 38 North
 Range 11 East
 Town of Three Lakes
 County of Oneida

North: 212158.174 USft
 East: 356817.075 USft
 Latitude: 45° 46' 00.55627" N
 Longitude: 89° 02' 51.22434" W
 Datum: NAD 83(2011)
 GNSS Method: RTK - Direct
 GNSS Control: WISCRS VRS
 Record North: 212158.224 USft
 Record East: 356817.070 USft
 Record Datum: NAD 83(1991)

(RECORDING AREA)

SECTION 13



(b) HISTORY OF ORIGINAL CORNER ESTABLISHMENT

Original Surveyor: Alfred Millard
Date of Survey: June, 1857

Original B.T.'S: Hemlock 18" N 65°W, 30 lks. W. Birch 16" N 45°E, 15 lks.
Y. Birch 12 S 30°E 24 lks. Cedar 10" S 17°W, 21 lks.

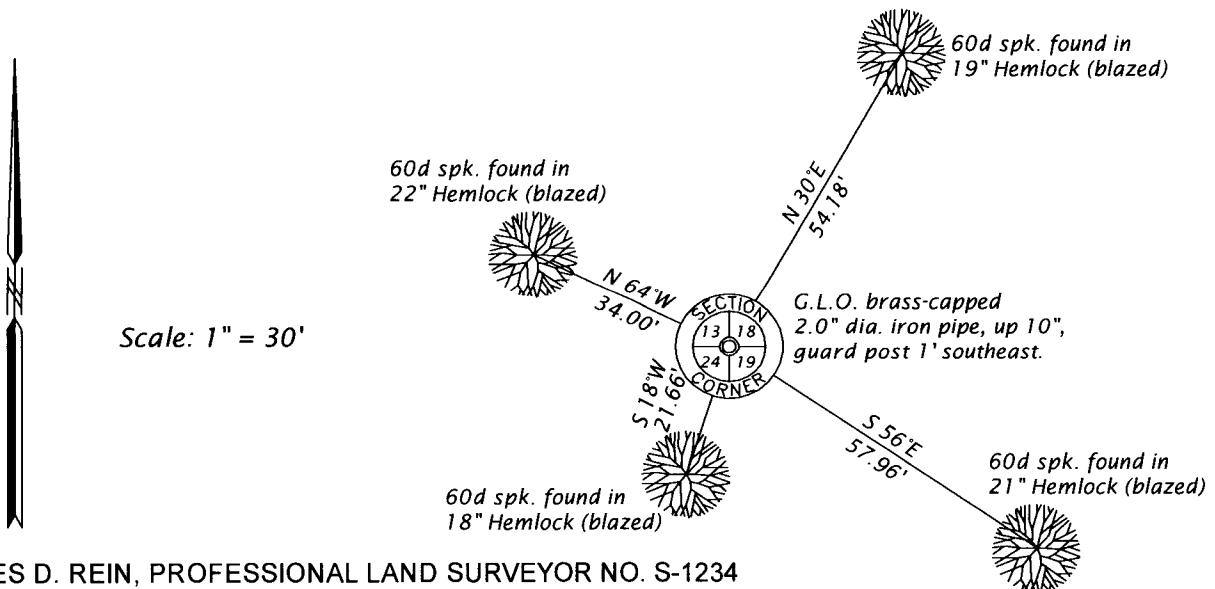
(f)(g)(h) DESCRIPTION OF MONUMENT FOUND AT THIS CORNER AND IF IT WAS ACCEPTED, STATE ALL EVIDENCE (MATERIAL, TESTIMONIAL, OCCUPATIONAL, PLATS, RECORD, OTHER MONUMENTS) USED AS A BASIS FOR ESTABLISHING LOCATION. IF NOT ACCEPTED OR IF NOTHING WAS FOUND, STATE EVIDENCE USED AS BASIS FOR ESTABLISHING LOCATION. IF REESTABLISHED THROUGH LOST CORNER PROPORTIONATE METHODS, INDICATE ALL MONUMENTS, DISTANCES AND DIRECTIONS USED TO ESTABLISH. INDICATE TYPE OF MONUMENT AND SIGN POST FOUND OR SET.

June 3, 1937 to September 24, 1938 - Wesson Cook, GLO Transitman and Surveyor, Dependent Resurvey of the North, South, East and West Boundaries and Subdivisional Lines, and Extension Surveys, in Township No. 38 North, Range No. 12 East, of Fourth Principal Meridian, at point for the corner, Set an iron post, 3 ft. long, 2 ins. diam. 26" in the ground, for cor. of secs. 13, 18, 19 and 24, with brass cap mkd., from which, the remains of the original bearing trees: a birch, 18" N 45°E, 15 lks. badly rotted; a birch stp. 17" diam. S30°E, 24 lks; a dead Cedar, 14" S17°W, 21 lks., scribed "BT"; hemlock stump, rotted to ground N64°W, 30 lks.; and new bearing trees: a hemlock 9" N30 3/4°E, 82 links; a hemlock 10" S75°E, 87 lks.; a hemlock 6" S40 1/2°W, 43 lks., and a hemlock 8" N 63 1/4°W, 53 lks.

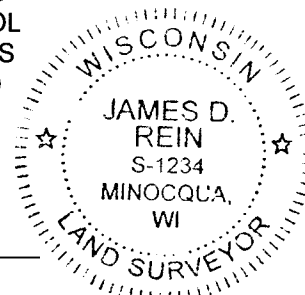
March 31, 2017 - James D. Rein, PLS No. 1234, we recovered the GLO brass capped 2" dia. iron pipe, which I accept as a perpetuation of the original corner, referenced by existing bearing trees as shown in the plan.

The coordinate value shown has been verified by at least one of the following methods: 1) comparison to a previously GPS determined published value; 2) the value is the average of two or more GPS observations at a markedly different time; 3) one or more distances were measured back to the GPS observed corner from temporary GPS observed offset locations.

(c)(d)(e) PLAN VIEW OF CORNER WITH TIES TO AT LEAST 4 WITNESS MONUMENTS. IF IN DISAGREEMENT WITH PREVIOUSLY ESTABLISHED CORNER, SHOW THE DISTANCE BETWEEN THE TWO CORNERS AND ALSO INDICATE THE TIES TO THE DISPUTED CORNER.



(i) I, JAMES D. REIN, PROFESSIONAL LAND SURVEYOR NO. S-1234 HEREBY CERTIFY THAT THE CORNER LOCATION ON THIS RECORD WAS DETERMINED BY ME OR UNDER MY DIRECTION AND CONTROL AND THAT THIS U.S. PUBLIC LAND SURVEY MONUMENT RECORD IS CORRECT AND COMPLETE TO THE BEST OF MY KNOWLEDGE AND BELIEF.



James D. Rein
 SIGNATURE DATE 5-24-17

INDEX NO. N - 25
3811130000