



Stock No. 26273

U S PUBLIC LAND SURVEY MONUMENT RECORD

Index No. N-23-24

State of Wisconsin } ss.
County of Oneida

I, JAMES R. GROTTMAN, do hereby certify that on the 13th day of October, 1986, I found evidence of the Meander corner of Sections 13 & 24 Township 38 North, Range 11 East, Fourth Principal Meridian, as described hereon; and that from this evidence I established a new monument and accessories as described hereon to perpetuate the original location of this corner.

Resident witnesses:
None

History of original corner establishment: Original survey in 1859 by William E. Daugherty. Dependent resurvey in 1941 by Hugh B. Crawford. At 37.04 chains set a concrete monument 24 inches long, 6 inch diameter, 20 inches in the ground with an iron post 23 inches long, 1 inch diameter, embedded in the center with a brass cap marked:

marked:	From which the following bear:
T38N	79-3/4°E 114 lks
MC/S13	Fallen dead tamarack 6"
S24	Fallen dead tamarack 6"
R11E	Tamarack 5" N81-1/2°E 47 lks
1941	Tamarack 5" S31-1/2°W

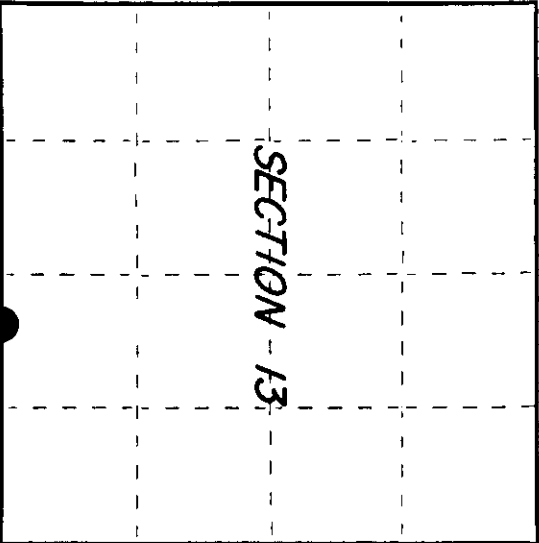
Description of corner evidence found: G.L.O. monument as described and in place. The following bearing trees:

Tamarack	5"	S27°W	20.60 feet
Tamarack	5"	N87°E	13.37 feet

Description of monument and accessories I established to perpetuate the original location of this corner.

Corner in good condition. Blazed, scribed, painted, and posted all found bearing trees and the following new bearing trees:

Tamarack	4"	N26°W	5.47 feet
Steel sign post		Northwest	1.00 foot



○ = Corner monument restored.

Dated at Paraske, Wis. this 30 day of October, 1986
Signature [Signature] Title RLS Registration No. 1321
(County Surveyor, Registered Land Surveyor, or other duly authorized official)
Office of Register of Deeds, County of _____ I hereby certify that the within instrument was filed in this office for record on the _____ day of _____, 19____ at _____ o'clock _____ M.

(Register of Deeds)

By _____ Deputy

3811130018

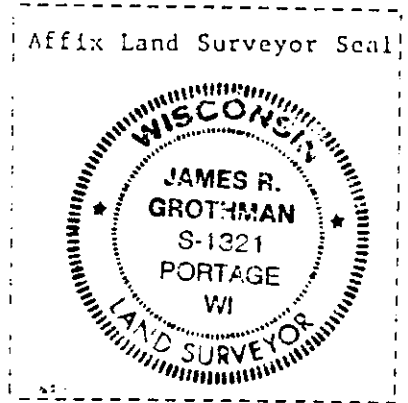
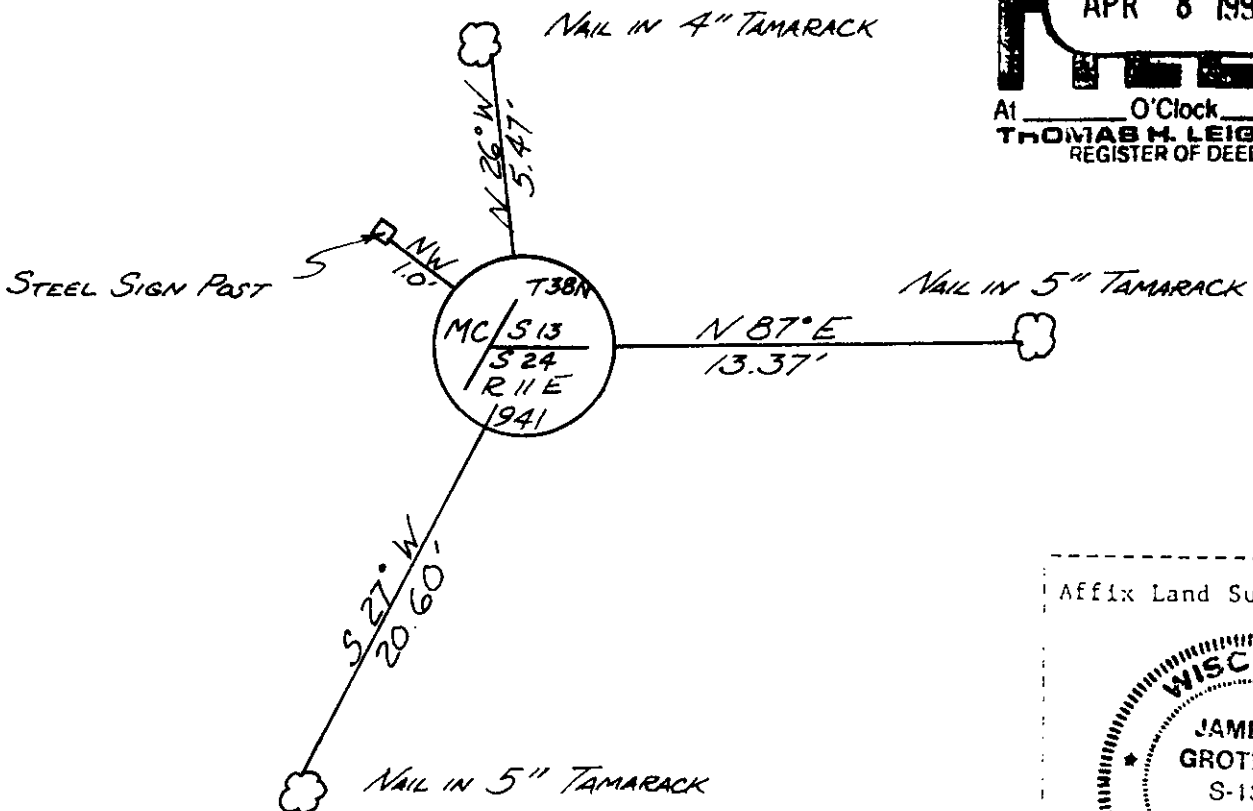
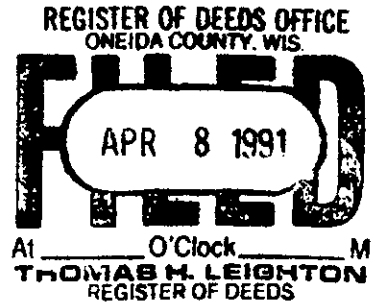
(e) Describe any material discrepancy between the location of the corner as restored or reestablished and the location of that corner as previously restored or reestablished by distance and direction. Show the discrepancy on the plan view drawing under (d), above. Show the distances between the corner as previously restored or reestablished and (1) the corner as restored or reestablished, and (2) to at least 2 of the witness monuments shown on the drawing in (d), above.

See drawing below

(f) Was the corner restored through acceptance of (1) an obliterated evidence location, or, (2) a found perpetuated location?

Corner was restored through acceptance of a found perpetuated location.

(g&h) Was the corner reestablished through lost corner proportionate methods? If so, show the method, including the directions and distances to other public land survey corners used as evidence or used for proportioning in determining the corner location?



JAMES R. GROTHMAN, Registered Land Surveyor No. 1321

(i) I, James R. Grothman, certify that the corner location shown on this record was determined by me or under my direction and control and that this U.S. Public Land Survey Monument Record is correct and complete to the best of my knowledge and belief.

James R. Grothman 10/30/86
Signature Date

Certificate ready for filing: N. Frank Hawley 1/6/87
District Ranger Date