



Stock No. 26273

U.S. PUBLIC LAND SURVEY MONUMENT RECORD

Index No. N-22-23

State of Wisconsin } ss.
County of Oneida

I, JAMES R. GROTHMAN, do hereby certify that on the 10th day of October, 1986, I found evidence of the Meander corner of Sections 13 and 24 Township 38 North, Range 11 East, Fourth Principal Meridian, as described hereon, and that from this evidence I established a new monument and accessories as described hereon to perpetuate the original location of this corner.

Resident witnesses:

None

History of original corner establishment: Original survey in 1859 by William E. Daugherty. Dependent resurvey in 1941 by Hugh B. Crawford. At 10.23 chains set a concrete monument 3 feet long, 4 inch diameter, 26 inches in the ground with an iron post 3 feet long, 1 inch diameter embedded in the center w.th brass cap marked:

T38N			
MC S13	From which the following bear:		
S24	White Pine 28"	N66-3/4°E	330 lks
R11E	Spruce 5"	S63°E	121-1/2 lks
1941			

Description of corner evidence found:

G.L.O. monument as described but standing in 1.6 feet out of loose ground.

The following bearing tree: Spruce 8" S64°E 80.30 feet

Description of monument and accessories I established to perpetuate the original location of this corner. Replumbed and secured leaning corner monument. Monument was not lowered to previously recorded depth. Blazed, scribed, painted and posted found bearing tree and the following bearing trees:

White Pine	7"	N71°E	24.82 feet
White Pine	9"	S12°E	22.60 feet
South bank Elm Lake		North	53.00 feet
Tamarack	6"	S73°W	17.98 feet
Steel sign post		South	1.00 foot†

Dated at Portage Wis., this 5 day of December, 1986

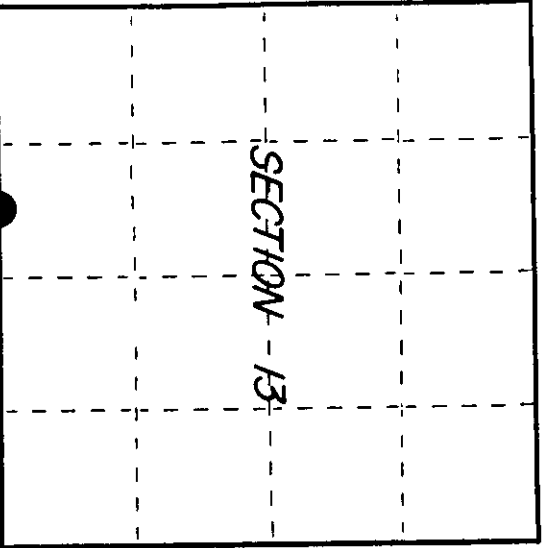
Signature James R. Grothman Title Land Surveyor Registration No. 1321
(County Surveyor, Registered Land Surveyor, or other duly authorized official)

Office of Register of Deeds, County of _____ I hereby certify that the within instrument was filed in this office for record on the _____ day of _____, 19____ at _____ o'clock _____ M.

(Register of Deeds)

By _____ Deputy

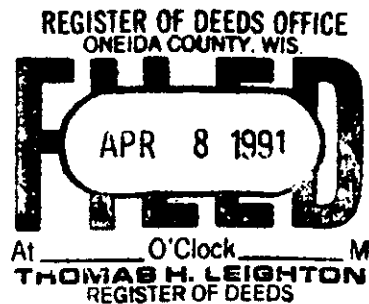
○ = Corner monument restored.



381130026

(e) Describe any material discrepancy between the location of the corner as restored or reestablished and the location of that corner as previously restored or reestablished by distance and direction. Show the discrepancy on the plan view drawing under (d), above. Show the distances between the corner as previously restored or reestablished and (1) the corner as restored or reestablished, and (2) to at least 2 of the witness monuments shown on the drawing in (d), above.

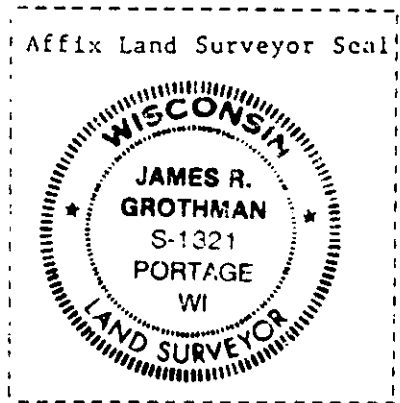
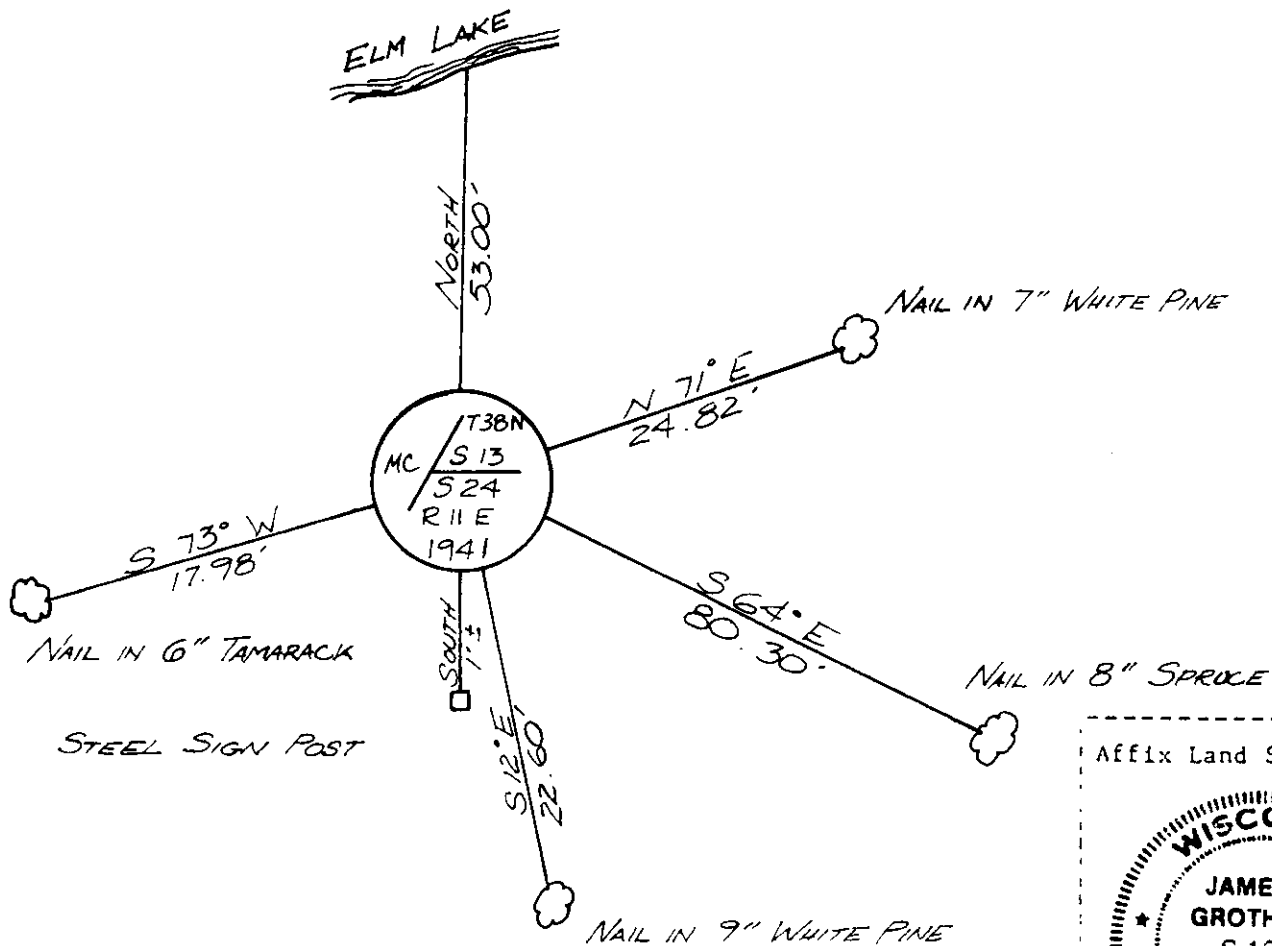
See drawing below



(f) Was the corner restored through acceptance of (1) an obliterated evidence location, or, (2) a found perpetuated location?

Corner was restored through acceptance of a found perpetuated location.

(g&h) Was the corner reestablished through lost corner proportionate methods? If so, show the method, including the directions and distances to other public land survey corners used as evidence or used for proportioning in determining the corner location?



(i) I, JAMES R. GROTHMAN, Registered Land Surveyor No. 1321 (type or print name) certify that the corner location shown on this record was determined by me or under my direction and control and that this U.S. Public Land Survey Monument Record is correct and complete to the best of my knowledge and belief.

James R. Grothman 12/5/86
Signature Date

Certificate ready for filing: D. Frank Hawley 1/6/87
District Ranger Date