



Stock No. 26273

U.S. PUBLIC LAND SURVEY MONUMENT RECORD

M-N 22-23
Index No.

State of Wisconsin

County of Oneida } ss.

I JAMES R. GROTHMAN, do hereby certify that on the 13th day of October, 19 86, I found evidence of the Angle Point 2 Meander corner of Section 13, Township 38 North, Range 11 East, Fourth Principal Meridian, as described hereon; and that from this evidence I established a new monument and accessories as described hereon to perpetuate the original location of this corner.

Resident witnesses:

None

History of original corner establishment: Original survey in 1859 by William E. Daugherty. Establishment of recorded original meander line of Elm Lake in Section 13 as a fixed and limiting boundary in 1943 by Hugh B. Crawford. Set a concrete monument 2 feet long, 4 inch diameter, 20 inches in the ground with an iron post 22 inches long, 1 inch diameter embedded in the center with a brass cap marked:

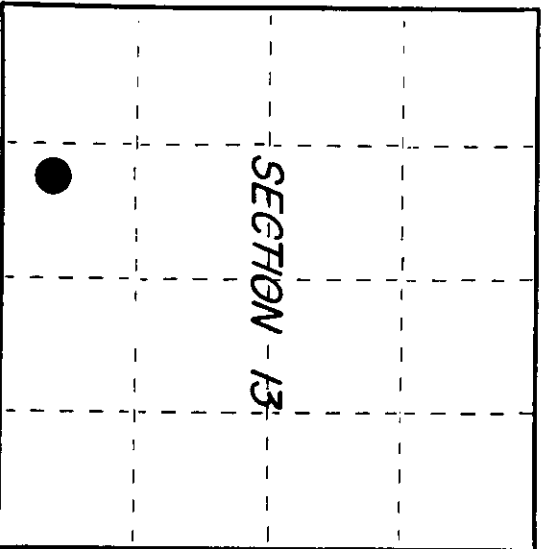
T38N		From which the following bear:			
R11E	AP2	Maple	16"	N52°E	147 lks
S13	1943	Willow	3"	S36°45'W	30.5 lks

Description of corner evidence found:
G.L.O. monument as described in place. Found the following bearing trees:
Maple 27" N52°E 96.88 feet

Description of monument and accessories I established to perpetuate the original location of this corner.

Corner in good condition. Blazed, scribed, painted and posted found bearing tree and the following new bearing trees:

White Pine	10"	S70E	26.55 feet
Hemlock	8"	S21°W	19.21 feet
Steel sign post		Northeasterly	1.00 foot ±



○ = Corner monument restored.

Dated at Portage, Wis., this 5 day of December, 19 86
Signature James R. Grothman Title Land Surveyor Registration No. 1321
(County Surveyor, Registered Land Surveyor, or other duly authorized official)
Office of Register of Deeds, County of _____, I hereby certify that the within instrument was filed in this office for record on the _____ day of _____, 19 _____ at _____ o'clock _____ M.

(Register of Deeds)

By _____ Deputy

381130427

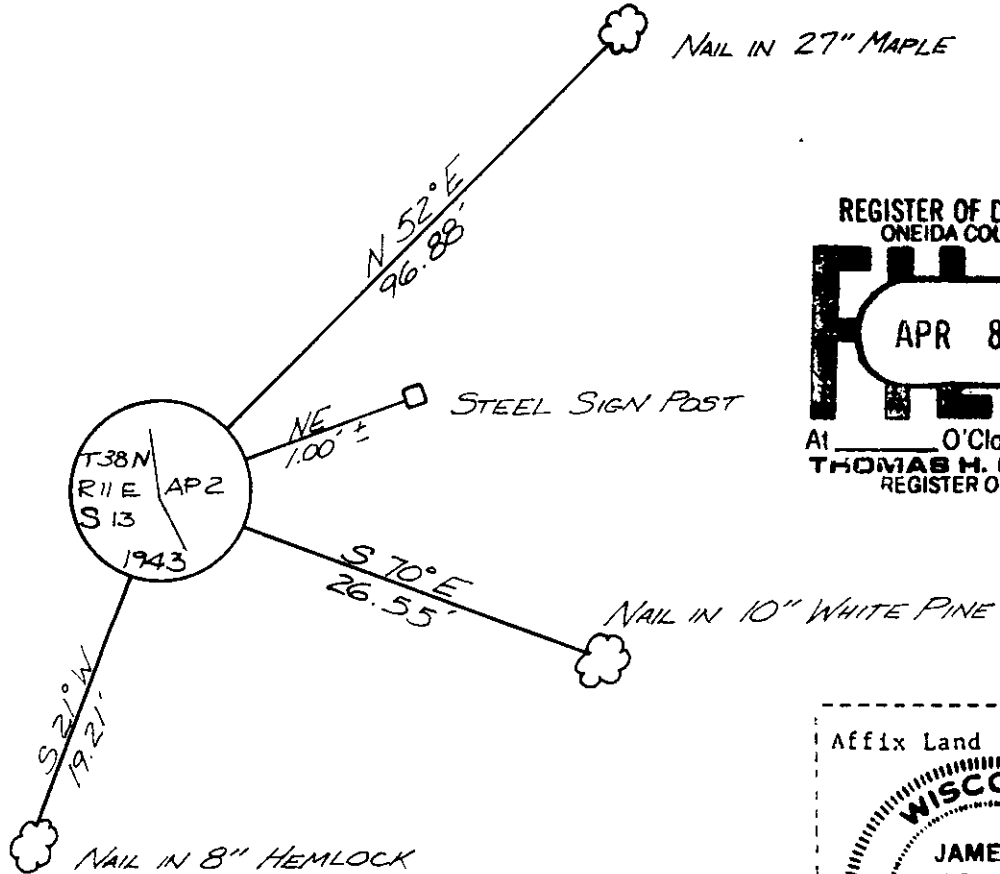
(e) Describe any material discrepancy between the location of the corner as restored or reestablished and the location of that corner as previously restored or reestablished by distance and direction. Show the discrepancy on the plan view drawing under (d), above. Show the distances between the corner as previously restored or reestablished and (1) the corner as restored or reestablished, and (2) to at least 2 of the witness monuments shown on the drawing in (d), above.

See drawing below

(f) Was the corner restored through acceptance of (1) an obliterated evidence location, or, (2) a found perpetuated location?

Corner was restored through acceptance of a found perpetuated location.

(g&h) Was the corner reestablished through lost corner proportionate methods? If so, show the method, including the directions and distances to other public land survey corners used as evidence or used for proportioning in determining the corner location?



REGISTER OF DEEDS OFFICE
ONEIDA COUNTY, WIS.
FILED
APR 8 1991
At _____ O'Clock _____ M
THOMAS H. LEIGHTON
REGISTER OF DEEDS

Affix Land Surveyor Seal

(i) JAMES R. GROTHMAN, Registered Land Surveyor No. 1321
(type or print name) certify that the corner location shown on this record was determined by me or under my direction and control and that this U.S. Public Land Survey Monument Record is correct and complete to the best of my knowledge and belief.

James R. Grothman 12/5/86
Signature Date

Certificate ready for filing: W. Frank Aubrey 1/6/87
District Ranger Date