

Stock No. 26273

U S PUBLIC LAND SURVEY MONUMENT RECORD

Index No. L-25

State of Wisconsin

County of Oneida } ss.

I, JAMES R. GROTHMAN, do hereby certify that on the 10th day of October, 1986, I found evidence of the One Quarter corner of Sections 13 and 18 Township 38 North, Range 11 East Fourth Principal Meridian, as described hereon; and that from this evidence I established a new monument and accessories as described hereon to perpetuate the original location of this corner.

Resident witnesses:

None

History of original corner establishment: Original survey in 1858 by Alfred Millard Dependent resurvey in 1937 by Wesson Cook. At 39.73 chains set a concrete monument 24 inches long, 6 inch diameter, 22 inches in the ground with a brass cap marked:

1/4	S13	S18	From which the following bear:		
	1937		Tamarack Stump	12"	N61°E 18 lks
			Tamarack Stump	10"	S86°W 11 lks
			Cedar	7"	N47-3/4°E 71 lks
			Cedar	7"	N49-1/4°W 21 lks

Description of corner evidence found:

2" diameter iron pipe with no cap and the following bearing trees:

Cedar	10"	N50°W	13.80 feet
Cedar	10"	N47°E	46.86 feet

Description of monument and accessories I established to perpetuate the original location of this corner.

Replaced 2" iron pipe with a " diameter Berntsen Aluminum Pipe Monument 60 inches long, 12 inches above water surface with an aluminum cap marked:

1/4	R11E	R12E	Blazed, scribed, painted, and posted all found bearing trees and the following new bearing trees:		
	S13	S18			
	1986		Cedar	10"	S85°W 16.53 feet
	S-1321		Cedar	9"	S66°E 13.87 feet
			Spruce	7"	N62°E 12.48 feet
			Steel Sign Post	West	.50 foot

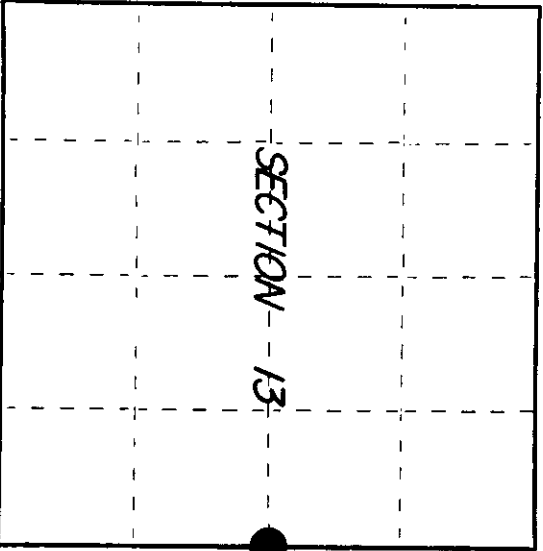
Dated at WATERLOO Wis., this 30 day of OCTOBER, 1986

Signature [Signature] Title RLS Registration No. 1321
(County Surveyor, Registered Land Surveyor, or other duly authorized official)

Office of Register of Deeds, County of Oneida
Instrument was filed in this office for record on the 30 day of OCTOBER, 1986
at 10:00 o'clock A.M.

(Register of Deeds)

By [Signature] Deputy

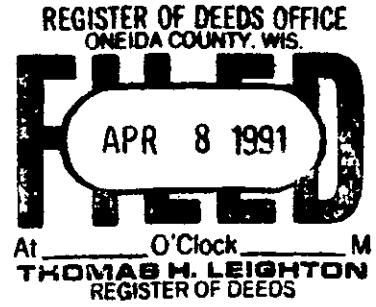


○ = Corner monument restored.

381132000

(e) Describe any material discrepancy between the location of the corner as restored or reestablished and the location of that corner as previously restored or reestablished by distance and direction. Show the discrepancy on the plan view drawing under (d), above. Show the distances between the corner as previously restored or reestablished and (1) the corner as restored or reestablished, and (2) to at least 2 of the witness monuments shown on the drawing in (d), above.

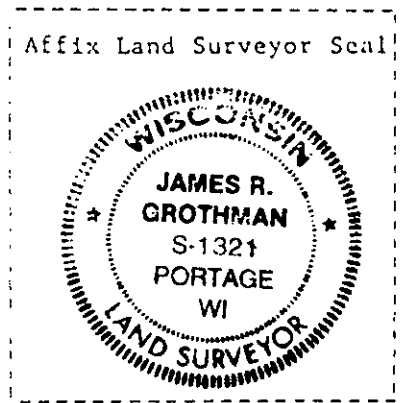
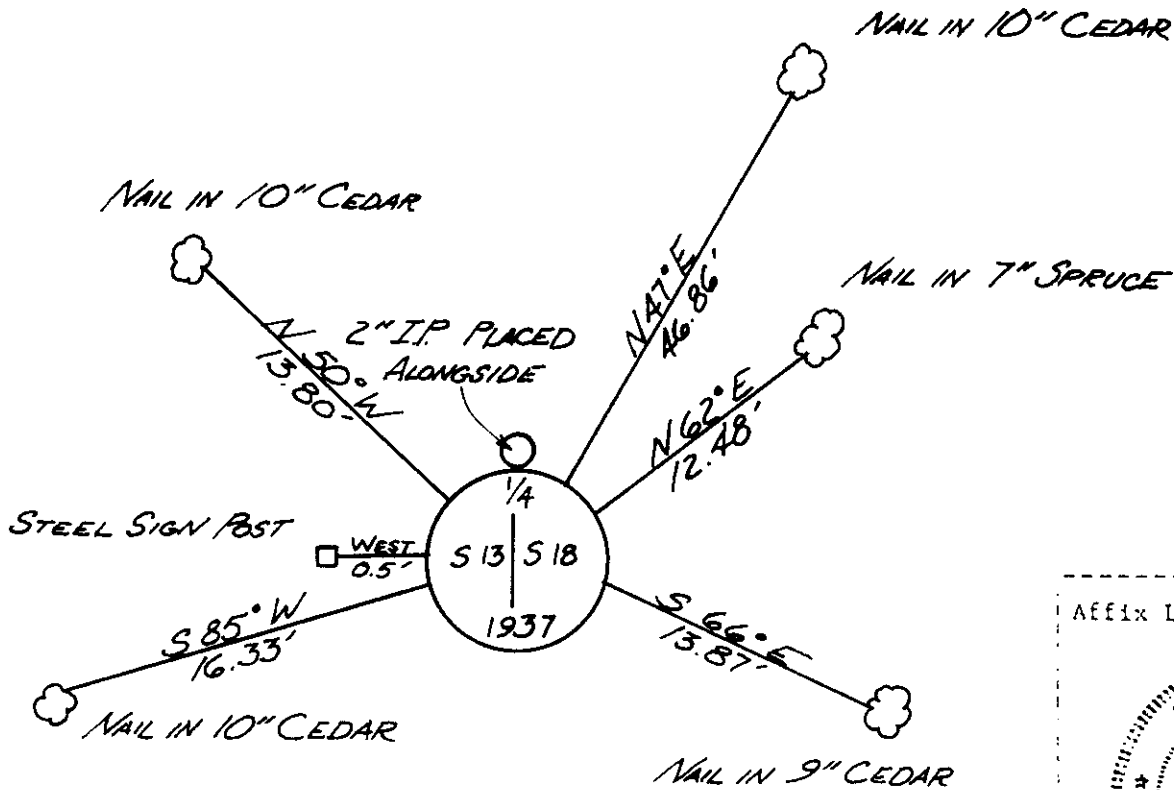
See drawing below



(f) Was the corner restored through acceptance of (1) an obliterated evidence location, or, (2) a found perpetuated location?

Corner was restored through acceptance of a found perpetuated location.

(g&h) Was the corner reestablished through lost corner proportionate methods? If so, show the method, including the directions and distances to other public land survey corners used as evidence or used for proportioning in determining the corner location?



(*) I, JAMES R. GROTHMAN, Registered Land Surveyor No. 1321
(Type or print name; certify that the corner location shown on this record was determined by me or under my direction and control and that this U.S. Public Land Survey Monument Record is correct and complete to the best of my knowledge and belief

James R. Grothman 10/30/86
Signature Date

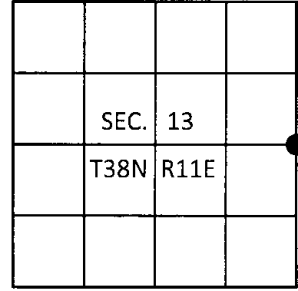
Certificate ready for filing: P. Sarah Aubrey 1/6/87
District Ranger Date

U.S. PUBLIC LAND SURVEY MONUMENT RECORD

Note: This form is intended and designed to fulfill all requirements of Wisconsin Administrative Code, Chapter A-E 7.08 U.S. Public Land Survey Monument Record (3)(a-i).

(a) CORNER LOCATION
 1/4 Cor. of Secs. 13 & 18
 Township 38 North
 Range 11 & 12 East of the 4th P.M.
 Town of Three Lakes
 County of Oneida

WISCORS - Oneida County
 N: 214,779.56 USft
 E: 356,798.99 USft
 Datum: NAD 83(2011)
 GNSS Method: Static
 GNSS Control: WISCORS VRS



(b) HISTORY OF ORIGINAL CORNER ESTABLISHMENT

Original Surveyor: _____ Original Accessories: _____
 Date of Survey Commenced: _____
 Completed: _____

(b)(f)(g)(h) Description of monument found at this corner and if it was accepted, state all evidence (material, testimonial, occupational, plats, records, other monuments) used as a basis for accepting. If not accepted or if nothing was found, state evidence used as basis for establishing location. If re-established through lost corner proportionate methods, indicate all monuments, distances and directions used to establish. Indicate type of monument and sign post found or set.

This is a perpetuation of a previous USPLS Monument Record by James R. Grothman, RLS dated October 30, 1986 and filed in the office of the Oneida County Register of Deeds. A complete history of the corner can be found on the previous monument record. I accept the previous location as a true and faithful perpetuation or reestablishment of the original corner location and further perpetuate it as follows.

August 18, 2016: I found and accepted the record monument, a 2-1/2" diam. aluminum pipe with a 3-1/4" diam. aluminum cap projecting 14" above the ground surface. The existing accessories were found in substantial agreement with the record and were not remeasured as the sole purpose of this work is to report the coordinates of the corner point.

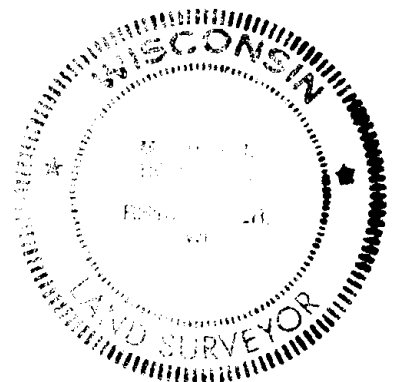
The coordinate value shown has been verified by at least one of the following methods: 1) comparison to a previously GPS determined published value; 2) the value is the average of two or more GPS observations at a markedly different time; 3) one or more distances were measured back to the GPS observed corner from temporary GPS observed offset locations.

(c)(d)(e) Plan view of corner with ties to at least 4 witness monuments. If in disagreement with previously established corner, show the distances between the two corners and also indicate the ties to the disputed.

REGISTER OF DEEDS OFFICE
 ONEIDA COUNTY
 FILED

DEC 28 2016

AT _____ O'CLOCK _____ M
 KYLE J. FRANSON
 REGISTER OF DEEDS



(i) I, Michael J. Romportl, Professional Land Surveyor No. S-1624, hereby certify that the corner location on this record was determined by me or under my direction and control and that this U.S. Public Land Survey Monument Record is correct and complete to the best of my knowledge and belief.

Michael J. Romportl 12/23/2016
 Signature Date