



Stock No. 26273

U.S. PUBLIC LAND SURVEY MONUMENT RECORD

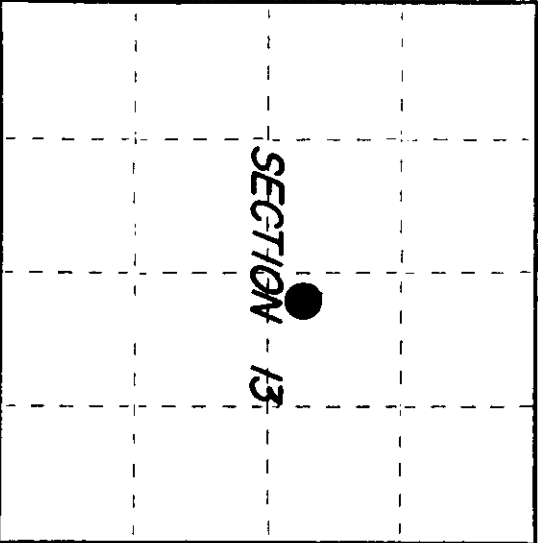
Index No. K-L-23-24...

State of Wisconsin } ss.
County of Oneida

I JAMES R. GROTHMAN, do hereby certify that on the 13th day of October 1986, I found evidence of the Angle point 8 Meander corner of Section 13 Township 38 North, Range 11 East, Fourth Principal Meridian, as described hereon; and that from this evidence I established a new monument and accessories as described hereon to perpetuate the original location of this corner.

Resident witnesses:

None



O = Corner monument restored.

History of original corner establishment: Original survey in 1859 by William E. Daugherty. Establishment of recorded original meander line of Elm Lake in Section 13 as a fixed and limiting boundary in 1943 by Hugh B. Crawford. Set a concrete monument 2 feet long, 4 inch diameter, 20 inches in the ground with an iron post 22 inches long, 1 inch diameter embedded in the center with brass cap marked: T38NR11E From which the following bear: White Birch 6" N34-1/4°E 101 lks S13 1943 White Birch 7" S14-1/2°E 35 lks AP8 1943

Description of corner evidence found:

G.L.O. monument as described in place. The following bearing trees:

Table with 4 columns: Tree Type, Diameter, Bearing, Distance. Includes White Birch (Dead), Red Pine, and another Red Pine.

Description of monument and accessories I established to perpetuate the original location of this corner.

Blazed, scribed, painted, and posted all found bearing trees and the following new bearing tree:

Table with 4 columns: Tree Type, Diameter, Bearing, Distance. Includes Red Pine and Steel Sign Post.

Dated at Racine Wis. this 20 day of October 1986. Signature of James R. Grothman, Title: Registered Land Surveyor, or other duly authorized official. Registration No. 1321. Office of Register of Deeds, County of Oneida. I hereby certify that the within instrument was filed in this office for record on the 19th day of October 1986 at 10:00 o'clock A.M.

(Register of Deeds)

By: Deputy

3811132218

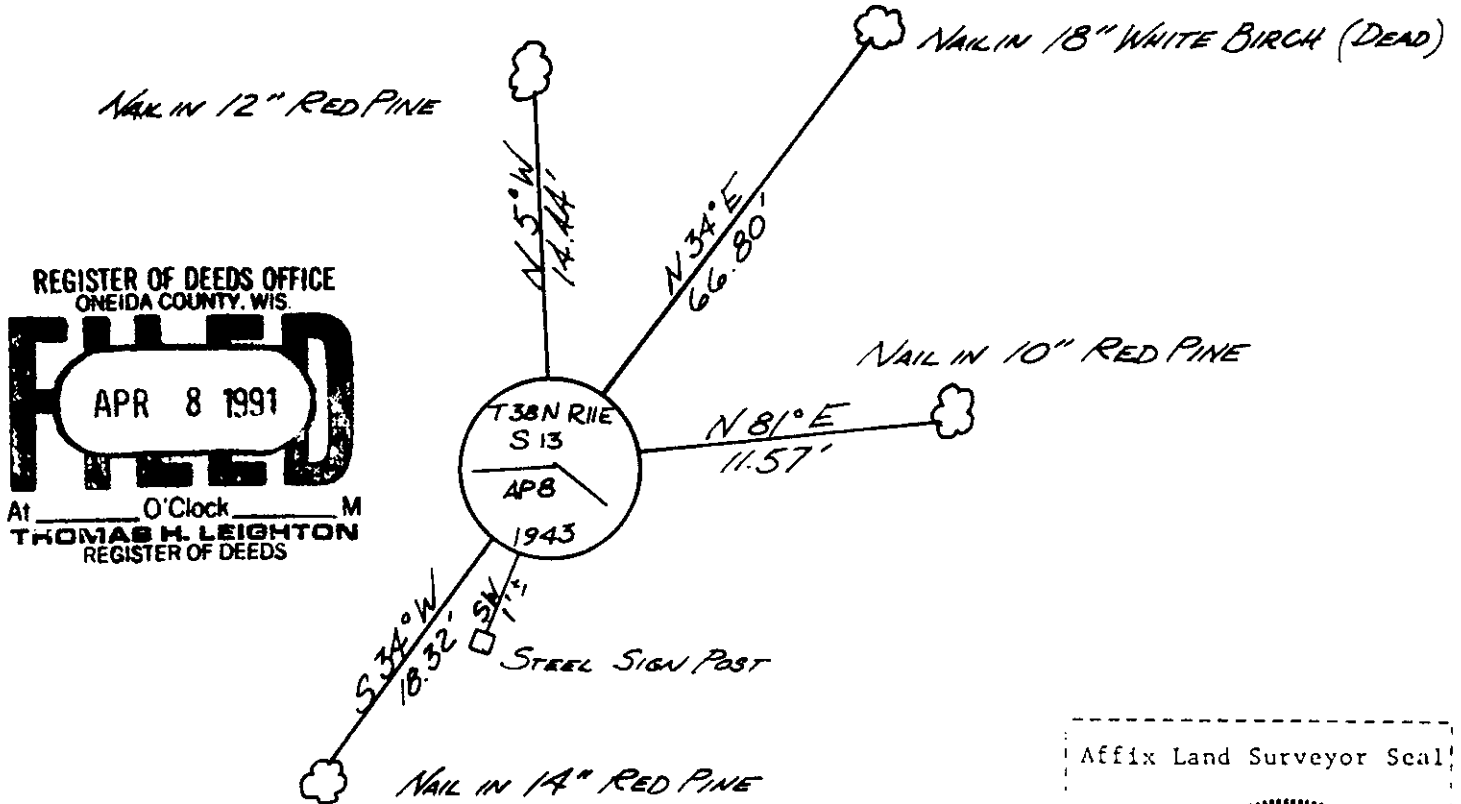
(e) Describe any material discrepancy between the location of the corner as restored or reestablished and the location of that corner as previously restored or reestablished by distance and direction. Show the discrepancy on the plan view drawing under (d), above. Show the distances between the corner as previously restored or reestablished and (1) the corner as restored or reestablished, and (2) to at least 2 of the witness monuments shown on the drawing in (d), above.

See drawing below

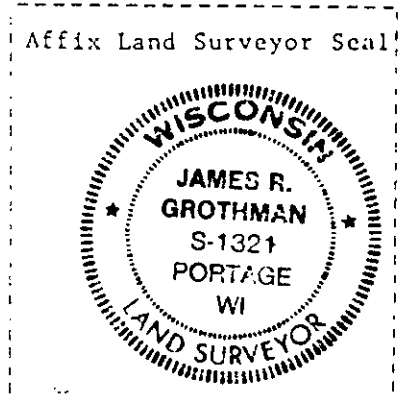
(f) Was the corner restored through acceptance of (1) an obliterated evidence location, or, (2) a found perpetuated location?

Corner was restored through acceptance of a found perpetuated location.

(g&h) Was the corner reestablished through lost corner proportionate methods? If so, show the method, including the directions and distances to other public land survey corners used as evidence or used for proportioning in determining the corner location?



REGISTER OF DEEDS OFFICE
ONEIDA COUNTY, WIS.
FILED
APR 8 1991
At _____ O'Clock _____ M
THOMAS H. LEIGHTON
REGISTER OF DEEDS



(i) I, JAMES R. GROTHMAN, Registered Land Surveyor No. 1321 (type or print name) certify that the corner location shown on this record was determined by me or under my direction and control and that this U.S. Public Land Survey Monument Record is correct and complete to the best of my knowledge and belief.

James R. Grothman 10/30/86
Signature Date

Certificate ready for filing: J. Frank Hawley 1/6/87
District Ranger Date