

Stock No. 26273

U.S. PUBLIC LAND SURVEY MONUMENT RECORD

Index No. N-21

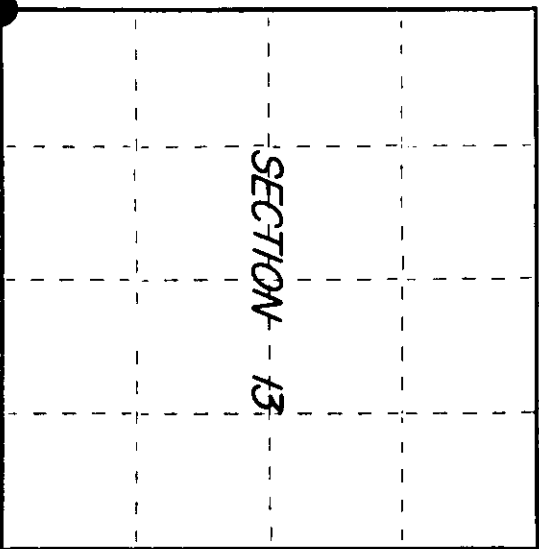
State of Wisconsin

County of Oneida } ss.

I, JAMES R. GROTHMAN, do hereby certify that on the 10th day of October, 1986, I found evidence of the Section corner of Sections 13, 14, 23, 24 Township 38 North, Range 11 East, Fourth Principal Meridian, as described hereon; and that from this evidence I established a new monument and accessories as described hereon to perpetuate the original location of this corner.

Resident witnesses:

None



○ = Corner monument restored.

History of original corner establishment:

Original survey in 1859 by William E. Daugherty. Dependent resurvey in 1941 by Hugh B. Crawford. At 80.61 chains set a concrete monument 3 feet long, 4 inch diameter, 30 inches in the ground with an iron post 3 feet long, 1 inch diameter embedded in the center with brass cap marked:

T38N R11E	From which the following bear:	Tamarack Stump	S32°E	51 lks
S14   S13		Dead Tamarack	18" N72-1/5°W	29 lks
S23   S24		Tamarack	14" N87-1/4°E	48 lks
1941		Tamarack	16" S35°E	57.5 lks
		White Pine	8" S79-1/4°W	223-1/2 lks
		White Pine	15" N36-1/2°W	109 lks

Description of corner evidence found:

G.L.O. monument as described and in place but badly decayed.

The following bearing trees:

Old Snag	S35°E	71.94 feet
White Pine	19" N37°W	2.00 feet
Wood Sign Post	South	

Description of monument and accessories I established to perpetuate the original location of this corner.

In place of decayed concrete monument set a 1" diameter x 60" Berntsen Aluminum Pipe Monument with aluminum cap marked:

T38N R11E	Blazed, scribed, painted, and posted all found bearing trees and the following new bearing trees:
S14   S13	White Pine 15" East 103.42 feet
S23   S24	White Pine 18" S10°E 67.93 feet
1986	White Birch 6" N79°W 19.04 feet
S-1321	Steel Sign Post West 1.00 foot

Dated at Portage, Wis., this 23 day of October, 1986.

Signature [Signature] Title PLS Registration No. 1321  
(County Surveyor, Registered Land Surveyor, or other duly authorized official)

Office of Register of Deeds, County of Oneida, I hereby certify that the within instrument was filed in this office for record on the 23 day of October, 1986 at 10 o'clock A. M.

(Register of Deeds)

By [Signature] Deputy

3811140000

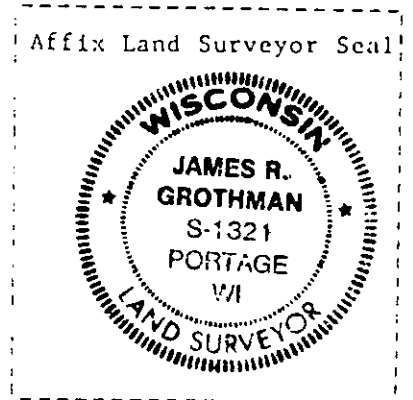
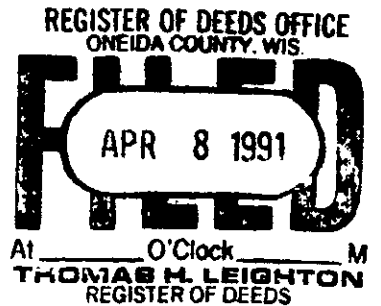
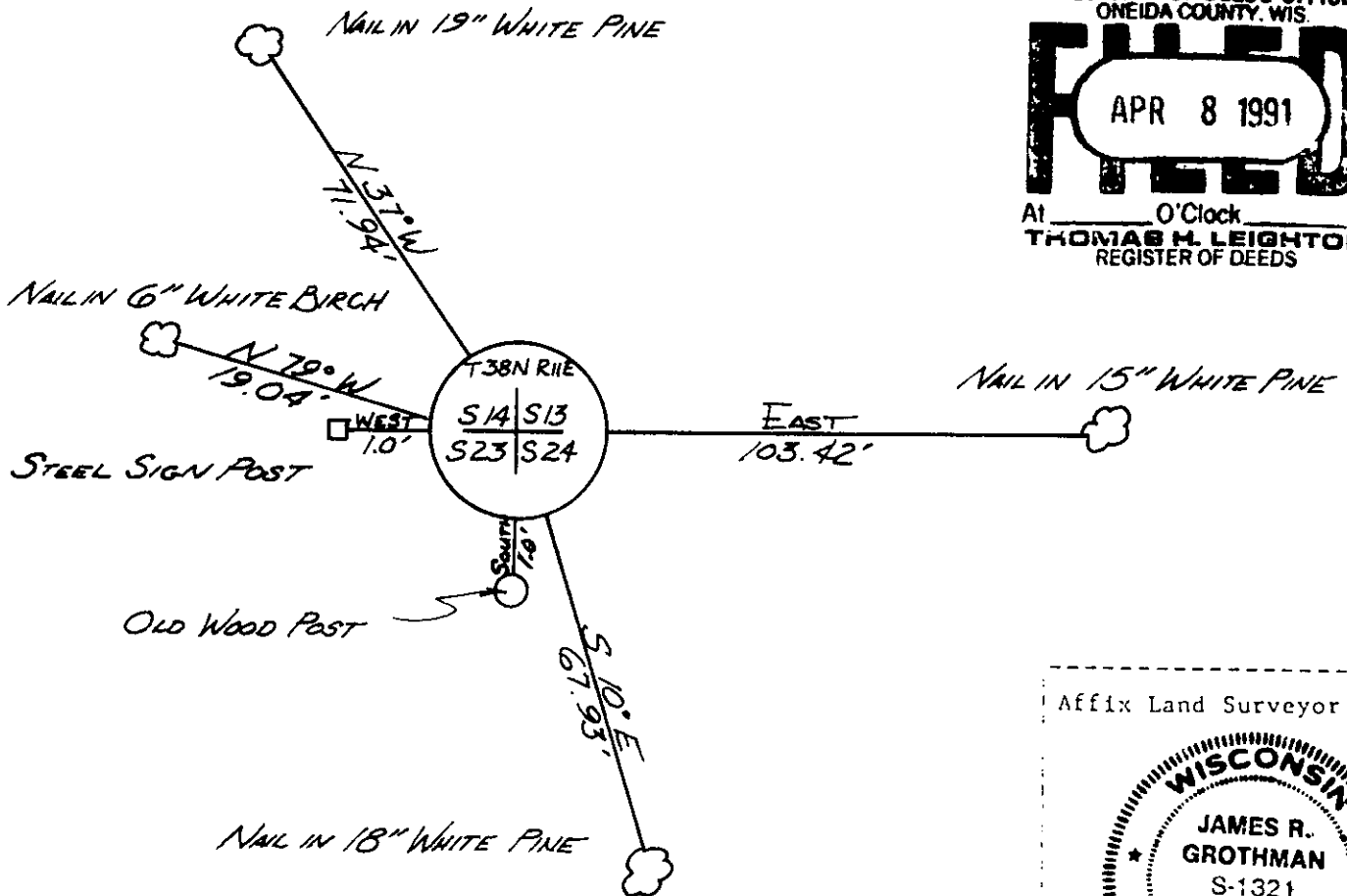
1.3) Describe any material discrepancy between the location of the corner as restored or reestablished and the location of that corner as previously restored or reestablished by distance and direction. Show the discrepancy on the plan view drawing under (d), above. Show the distances between the corner as previously restored or reestablished and (1) the corner as restored or reestablished, and (2) to at least 2 of the witness monuments shown on the drawing in (d), above.

See drawing below

(f) Was the corner restored through acceptance of (1) an obliterated evidence location, or, (2) a found perpetuated location?

Corner was restored through acceptance of a found perpetuated location.

(g&h) Was the corner reestablished through lost corner proportionate methods? If so, show the method, including the directions and distances to other public land survey corners used as evidence or used for proportioning in determining the corner location?



(1) JAMES R. GROTHMAN, Registered Land Surveyor No. 1321

(Type or print name; certify that the corner location shown on this record was determined by me or under my direction and control and that this U.S. Public Land Survey Monument Record is correct and complete to the best of my knowledge and belief.

*James R. Grothman* 10/30/86  
Signature Date

Certificate ready for filing: *G. Frank Hawley* 1/6/87  
District Ranger Date