

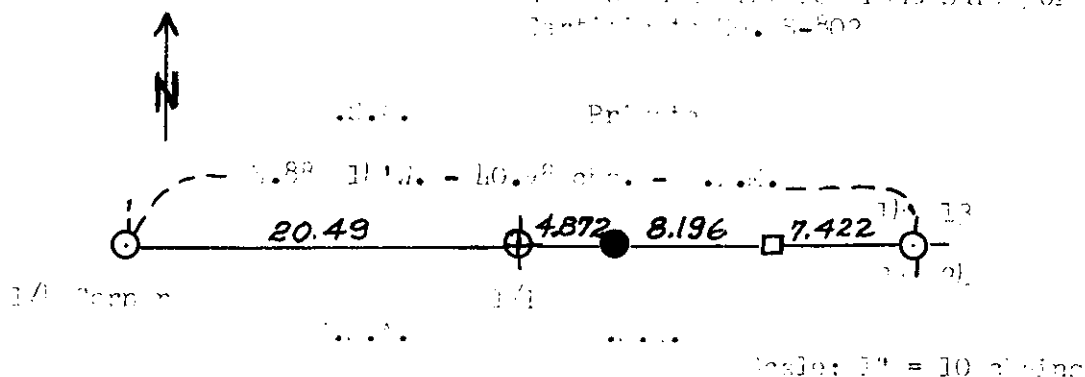
STATE OF WISCONSIN  
 COUNTY OF ONEIDA

State of Wisconsin )  
 County of Oneida )

I, Jean F. Resvick, do hereby certify that on the 12th day of March, 1960, I established the East sixteenth corner to sections 11 and 23, Township 36 North, Range 11 East, Fourth Principal Meridian, in accordance with the rules for the subdivision survey of the public lands. The plat map hereon is a correct representation of the method used and of the content and necessary easements established and a permit to perpetuate the location of said corner.

*Jean F. Resvick*

Jean F. Resvick - U. S. Forest Service  
 Wisconsin Registered Land Surveyor  
 Certificate No. 5-800



Witness Corner Accuracies:

Corner 5"	0.510 %	29.41 ft.	(0.117 acc.)
Corner 2"	0.2030 %	51.61 ft.	(0.225 acc.)
Corner 1"	0.112 %	22.59 ft.	(0.311 acc.)

Legend:

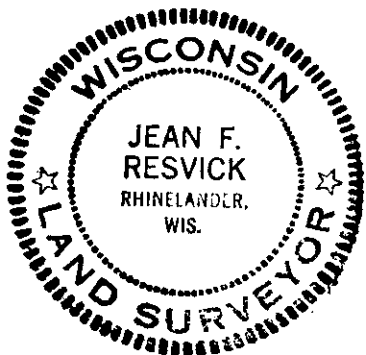
- - U.S. Resurvey Monument recovered in place.
- - 4" x 4" Line Post.
- - Witness Corner established - 2" x 5" on pine stake with witness post 4" diameter and 1" diameter corner location.
- ⊕ - 4" x 4" Cedar post set for 1936 position between Sections 11 and 23.

U. S. A. - U. S. Government Land

Office of Register of Deeds County of Oneida

I hereby certify that the within instrument was filed in this office for record on the 12th day of January, 1976, and was filed in book No. \_\_\_\_\_ Page No. \_\_\_\_\_ of the County Record at Oneida, Wis.

Signature Doris Verage Kuehn  
 Title Register of Deeds



3811140010  
 3811140020

N-20