

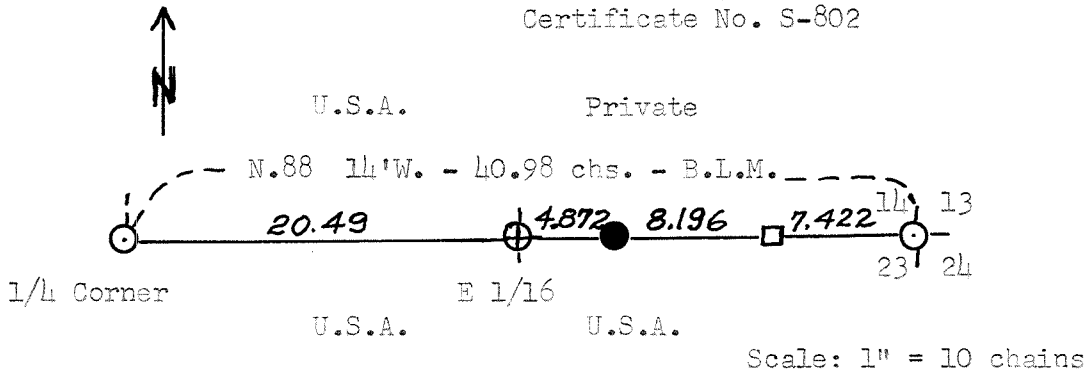
CERTIFIED LAND CORNER ESTABLISHMENT

State of Wisconsin)
) SS
 County of Oneida)

I, Jean F. Resvick, do hereby certify that on the 12th day of March, 1969, I established the East sixteenth corner to sections 14 and 23, Township 38 North, Range 11 East, Fourth Principal Meridian, in accordance with the rules for the subdivision survey of the public lands. The plat map hereon is a correct representation of the method used and of the monument and accessories as established and described to perpetuate the location of this corner.

Jean F. Resvick

Cadastral Surveyor - U. S. Forest Service
 Wisconsin Registered Land Surveyor
 Certificate No. S-802



Witness Corner Accessories:

Cedar 5"	S. 81° E.	29.64 ft.	(0.449 chs.)
W. Birch 8"	S. 3° 30' E.	51.81 ft.	(0.785 chs.)
Cedar 4"	N. 11° W.	22.53 ft.	(0.341 chs.)

LEGEND

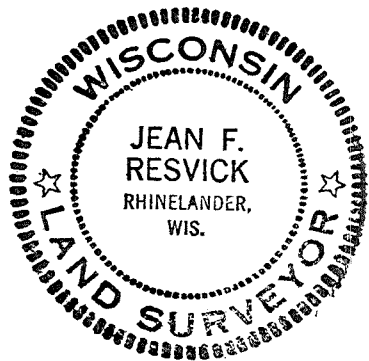
- - B.L.M. Resurvey Monuments recovered in place.
- - 4" x 4" Line Post.
- - Witness Corner established - 2" x 5" iron pipe capped with a brass tablet stamped to identify corner location.
- ⊕ - 4" x 4" Cedar post set for East 1/16 position between Sections 14 and 23.

U. S. A. - U. S. Government Land

Office of Register of Deeds County of Oneida

I hereby certify that the within instrument was filed in this office for record on the 12th day of January 19 76, and was filed in Book No. _____ Page No. _____ of the County Records as Document No. _____

Signature Doris Verage Kuehn
 Title Register of Deeds



3811140010
 3811140020

N-20

State of Wisconsin

County of Oneida } ss.

I James L. Will, do hereby certify that on the 28th day of August, 1985, I found evidence of the South one-quarter corner of Section 14, Township 11 East, Range 38 North, Fourth Principal Meridian, as described hereon; and that from this evidence I established a new monument and accessories as described hereon to perpetuate the original location of this corner.

Resident witnesses:

Michael Weber

U. S. Public Land Survey Monument Record

Index No. N-19

History of original corner establishment:

Original corner was established during the course of the subdivision of T 38 N, R 11 E, which was started Aug. 30, 1859 and completed Sept. 5, 1859 by William E. Daugherty, Deputy Surveyor.

Original B.T.'s:

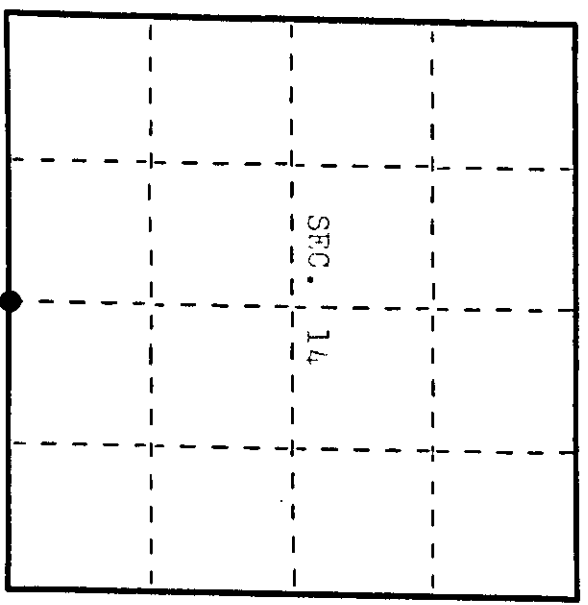
8" Tamarack N 70° W 9 lks.
8" Tamarack S 5° W 17 lks.

Description of corner evidence found:

Found a GLO 6" dia. concrete monument bras cap 4" below the swamp. Found a 4"x4" wood post 1.4' NE

Description of monument and accessories I established to perpetuate the original location of this corner. Placed and set out the following new bearing trees:

- 4" Spruce N 66° E 37.29' (measurements are to a nail in the
- 2" Spruce S 90° E 9.81' side of the trees.)
- 3" Spruce S 37° W 20.32'
- 2" Spruce N 23° W 10.58'



● = Corner monument restored.

Dated at Earle River, Wis., this 20th day of September, 1985.

Signature James L. Will Title Registered Land Surveyor Registration No. S-1410
(County Surveyor, Registered Land Surveyor, or other duly authorized official)

Office of Register of Deeds, County of Oneida. I hereby certify that the within instrument was filed in this office for record on the 18th day of September, 1985 at 8:00 o'clock A. M.

Doris Hargrave (Register of Deeds)

By Richard A. Sitter Deputy

Describe any material discrepancy between the location of the corner as restored or reestablished and the location of that corner as previously restored or reestablished by distance and direction. Show the discrepancy on the plan view drawing under (d), above. Show the distances between the corner as previously restored or reestablished and (1) the corner as restored or reestablished, and (2) to at least 2 of the witness monuments shown on the drawing in (d), above.

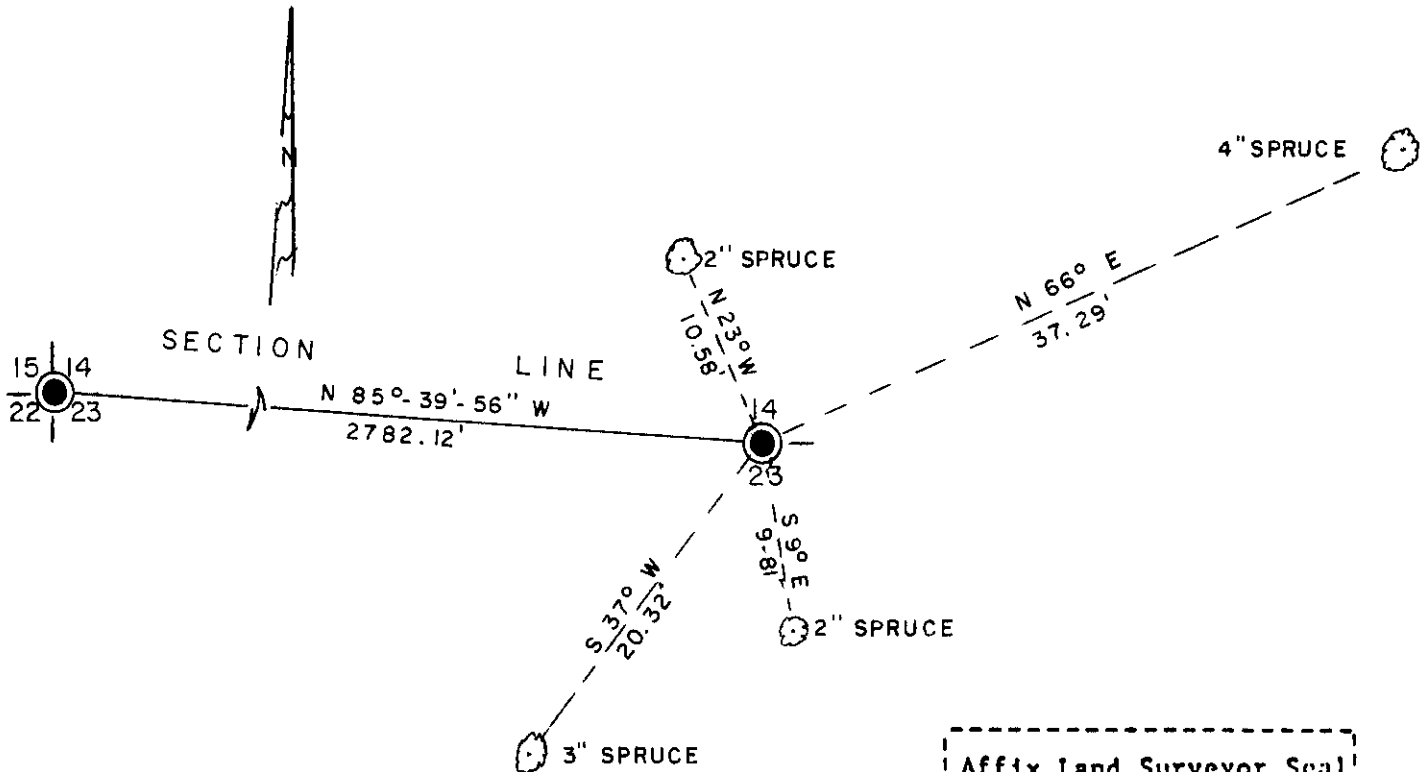
None. See sketch below.

Was the corner restored through acceptance of (1) an obliterated evidence location, or, (2) a found perpetuated location?

Corner was restored through acceptance of a found perpetuated location.

Was the corner reestablished through lost corner proportionate methods? If so, show the method, including the directions and distances to other public land survey corners used as evidence or used for proportioning in determining the corner location?

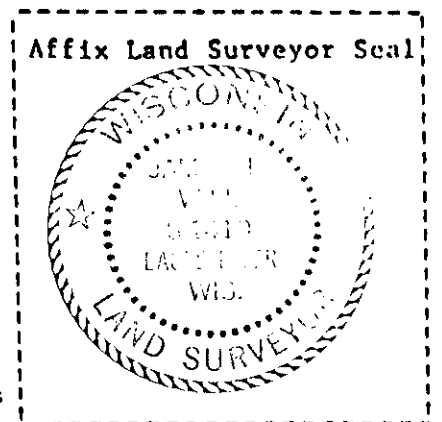
No. See sketch below.



— LEGEND —

SCALE : 1" = 10'

● G.L.O. CON. MON. BRASS CAP IN PLACE



I, James L. Will, R.L.S. 1410
 (type or print name) certify that the corner location shown on this record was determined by me or under my direction and control and that this U.S. Public Land Survey Monument Record is correct and complete to the best of my knowledge and belief.

James L. Will Sept. 20, 1985
 Signature Date

Stock No. 26273

U.S. PUBLIC LAND SURVEY MONUMENT RECORD

Index No. N-19

State of Wisconsin } ss.
County of Oneida

I William B. Cochran, do hereby certify that on the 20th day of April, 1989, I found evidence of the South Quarter corner of Section 14 Township 38 North, Range 11 East, Fourth Principal Meridian, as described hereon; and that from this evidence I established a new monument and accessories as described hereon to perpetuate the original location of this corner.

Resident witnesses:

History of original corner establishment:

Dependent Resurvey in 1941 by Hugh B. Crawford. West between Sections 14 and 23, at 40.98 chains, set corner position is restored from original bearing tree evidence. Set A concrete monument, 24 inches long, 6 inches in diameter, with a brass cap marked; S14, S23, 1/4, 1941. From which the following bear;

Table with 4 columns: Tree Type, Diameter, Bearing, Distance. Rows: Cedar (8", N71°00'E, 448 Links), Spruce (8", N88°15'W, 481 1/2 Links)

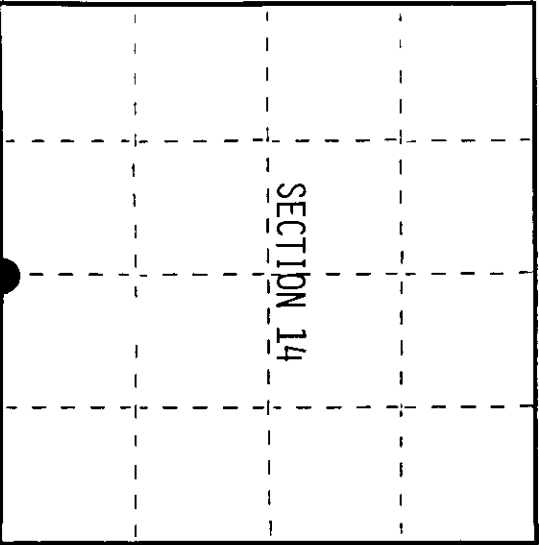
Description of corner evidence found: Found monument as described and in place, from which the following bear;

Table with 4 columns: Tree Type, Diameter, Bearing, Distance. Rows: Cedar (13", N71°00'E, 295.68 feet), Spruce (Snag) (N88°15'W, 317.79 feet)

Description of monument and accessories I established to perpetuate the original location of this corner.

Set a Steel Sign Post, West, Alongside Monument.

No other bearing trees available.



= Corner monument restored.

Dated at Hiles, Wis., this 28th day of August, 1989

Signature of William B. Cochran, Land Surveyor (County Surveyor, Registered Land Surveyor, or other duly authorized official) Registration No. S-1107

Office of Register of Deeds, County of ... I hereby certify that the within instrument was filed in this office for record on the ... day of ... 19... at ... o'clock ... M.

(Register of Deeds)

By ... Deputy

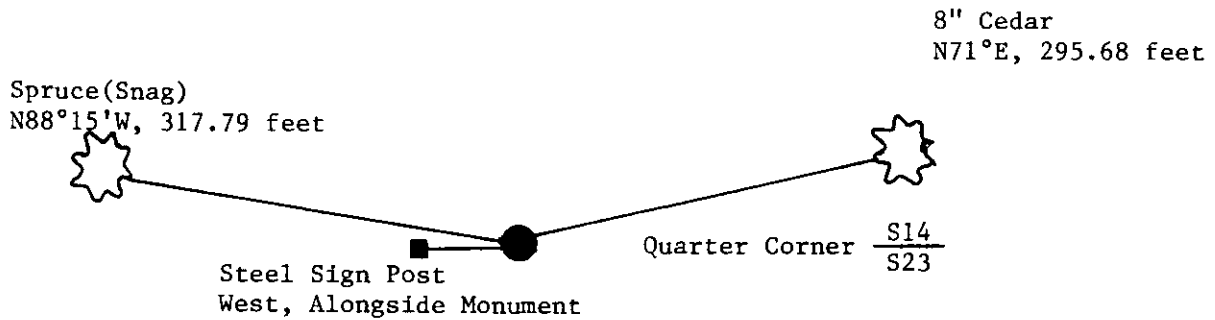
(e) Describe any material discrepancy between the location of the corner as restored or reestablished and the location of that corner as previously restored or reestablished by distance and direction. Show the discrepancy on the plan view drawing under (d), above. Show the distances between the corner as previously restored or reestablished and (1) the corner as restored or reestablished, and (2) to at least 2 of the witness monuments shown on the drawing in (d), above.

See drawing below.

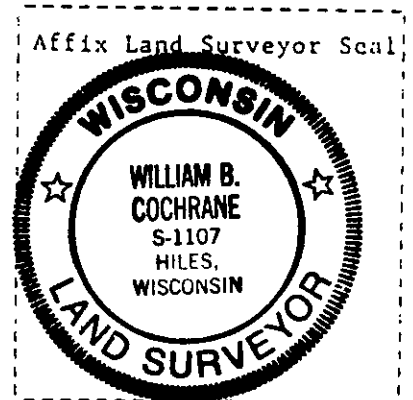
(f) Was the corner restored through acceptance of (1) an obliterated evidence location, or, (2) a found perpetuated location?

Restored through acceptance of a found perpetuated location.

(g&h) Was the corner reestablished through lost corner proportionate methods? If so, show the method, including the directions and distances to other public land survey corners used as evidence or used for proportioning in determining the corner location?



REGISTER OF DEEDS OFFICE
ONEIDA COUNTY, WIS.
FILED
APR 8 1991
At _____ O'Clock _____ M
THOMAS H. LEIGHTON
REGISTER OF DEEDS



(i) I, William B. Cochrane
[type or print name] certify that the corner location shown on this record was determined by me or under my direction and control and that this U.S. Public Land Survey Monument Record is correct and complete to the best of my knowledge and belief.

William B. Cochrane August 28, 1989
Signature Date

Survey requested by: Tom Hordwin 2/8/90
District Ranger Date

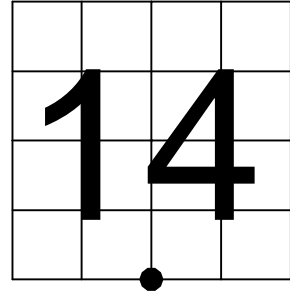
Oneida County
Land Information Office
Filed
1/13/2026

U.S. PUBLIC LAND SURVEY MONUMENT RECORD

NOTE: This form is intended and designed to fulfill all requirements of Wisconsin Administrative Code, Chapter A-E 7.08 U.S. Public Land Survey Monument Record (3) (a-i)

A-E 7.08(3)(a) Identity of corner:
South 1/4 Corner Section 14,
Township 38 North, Range 11 East
of the Fourth Principal Meridian,
Town of Three Lakes, Oneida County,
Wisconsin

WISCRS - ONEIDA COUNTY
N: 212,885.318 USft (XXX,XXX.XXX)
E: 348,739.959 USft (XXX,XXX.XXX)
Datum: NAD83 (2011)
GNSS Method RTN
GNSS Control WISCORS VRS



The coordinate value shown has been verified by the average of two or more GPS observations at a markedly different time. Coordinates shown in parenthesis are previously published values.

A-E 7.08(3)(b)

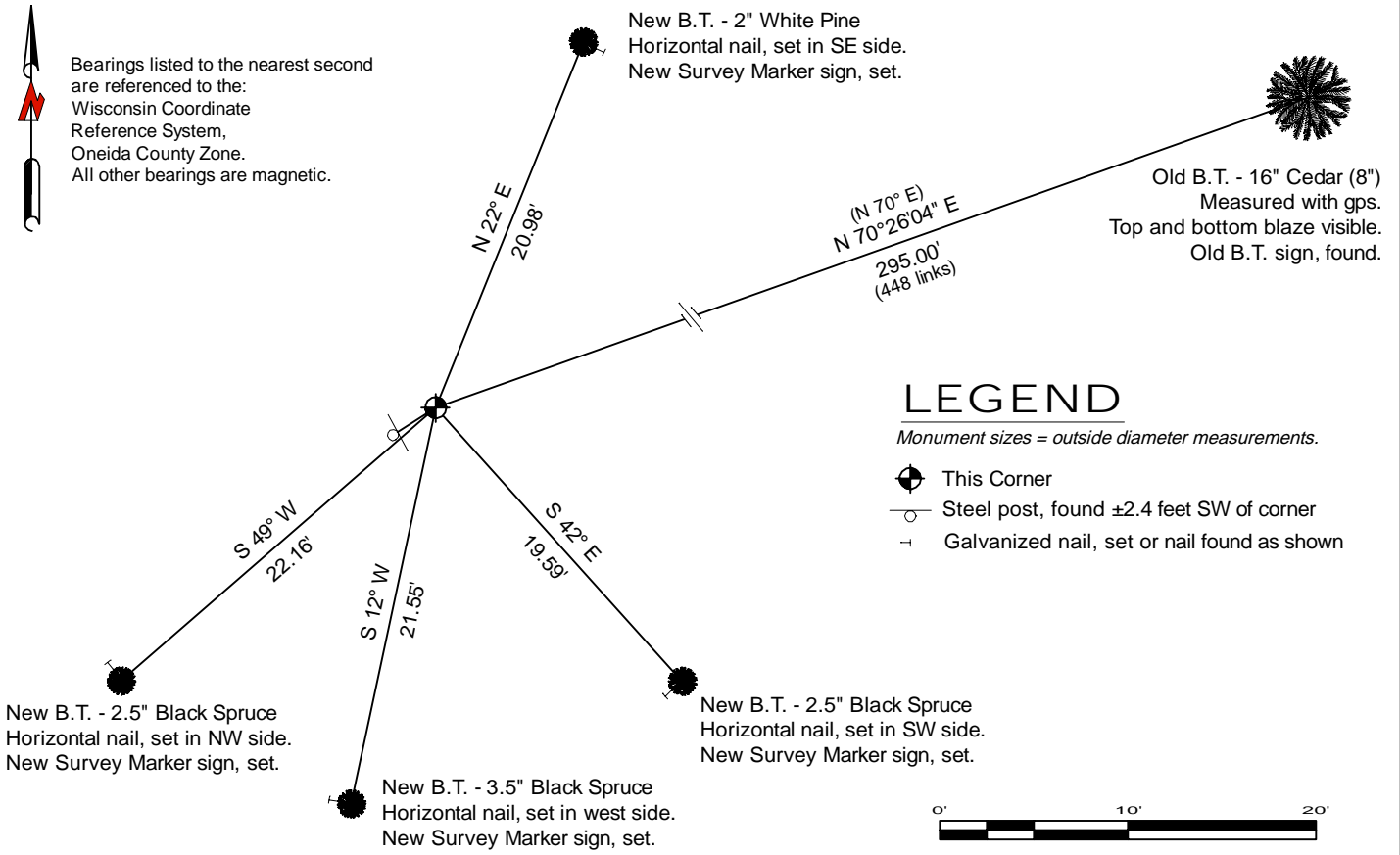
Original Surveyor: William E. Daugherty - August 30, 1859 to September 5, 1859
Tamarac 8 - N 70° W, 9 Links, Tamarac 8 - S 5° W, 17 Links

See previous U.S. Public Land Survey Monument Record - N-19 - August 28, 1989 - Surveyor 1107 - William B. Cochrane - THENCE:

- July 15, 1992 - Surveyor 2070 - Michael E. Weber - indicates this position as "G.L.O. concrete monument brass cap found in place" on county record Map #B2700.
- February 20, 2003 - Surveyor 1731 - Kip W. Soder - indicates this position as "G.L.O. concrete - brass cap monument" on county record Map #A1229.
- May 9 & June 17, 2005 - Surveyor 1731 - Kip W. Soder - indicates this position as "G.L.O. concrete - brass cap monument found" on county record Map #B5879 & #B6291.
- January 15, 2008 - Surveyor 1410 - James L. Will - indicates this position as "G.L.O. concrete monument - brass cap" on county record Map #A2114.

November 11, 2025 - I found a 6" diameter concrete monument with a 2" diameter brass cap stamped to identify the corner location. The monument is in a black spruce swamp, ±300 feet west of high land, is ±6" below the surface of the swamp, and ±3" below the surface of the water. I also found 1 of Crawford's bearing trees alive and in good condition. I did not find any other bearing trees. I established 4 new reference monuments as shown below.

A-E 7.08(3)(c)(d) Plan view of corner with references to at least 4 witness monuments.

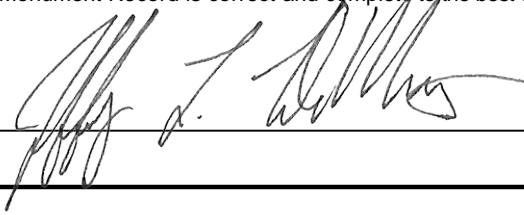


A-E 7.08(3)(e) 1859 Surveyor set a post, 1941 Surveyor set a concrete monument with a brass cap, subsequent surveyors found the same, as did I in 2025.

A-E 7.08(3)(f) I accept this monument in good faith as a FOUND PERPETUATED LOCATION of the corner.
A-E 7.08(3)(g)(h) This corner was not determined through lost-corner-proportionate methods.

A-E 7.08(3)(i) I, Jeffrey L. DeMuth, Professional Land Surveyor No. S-2656, hereby certify that the corner location on this record was determined by me or under my direction and control, and that this U.S. Public Land Survey Monument Record is correct and complete to the best of my knowledge, and belief.



SIGNATURE  DATE December 4, 2025