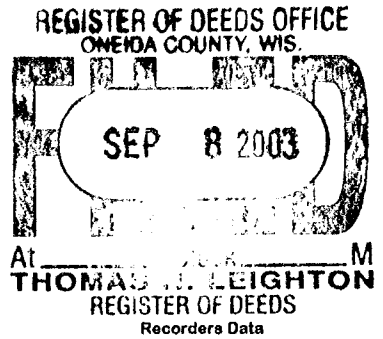


This form is intended to fulfill the requirements of Chapter A-E7.08 (3)(a) thru (l) U.S. Public Land Survey Monument Location Record, Wisconsin Administrative Code. Use the reverse side of form for continuation.



**U.S. PUBLIC LAND SURVEY MONUMENT LOCATION RECORD**

USPLS CORNER: EAST WIT MC SECTION: 23 TOWNSHIP: 38 NORTH RANGE: 11 EAST  
 NAME OF WATERWAY FOR M.C. CORNER : THE THOUROUGHFARE SECTION LINE: NORTH  
 (CITY)(VILLAGE)(TOWN) OF: THREE LAKES COUNTY OF: ONEIDA

Description of monument found or placed and all other evidence used as the basis for monument location; including monuments and measurements required if the corner location was reestablished by lost corner proportionate methods. Also indicate name of the original surveyor, original survey date and the corner monument, bearing trees, witness or other reference monuments established, including measured bearing and distance ties, from available survey records.

Found older 3/4" dia. yellow painted iron pipe with uncapped top 1" up; I left the plumb and stable iron pipe in place and drove a standard 2" dia. by 30" long aluminum pipe monument with stamped Oneida County cap 2" above grade over the older iron pipe. Corner falls 30"+ East of shoreline of The Thouroughfare, also known locally as Eagle Creek, bearing S45°E this date and is located at the SW corner of improved lot at 6401 Safar Road. I found a 1/2" by 2.5" yellow poly survey marker stake nearby, which I reset 4" East of the MC aluminum corner monument and also found an older 3/4" dia. iron pipe with uncapped top 4" up and tipped 10°South 23.2' West of the MC corner location, but not recognized as being on the section line by Soder or Will surveys.

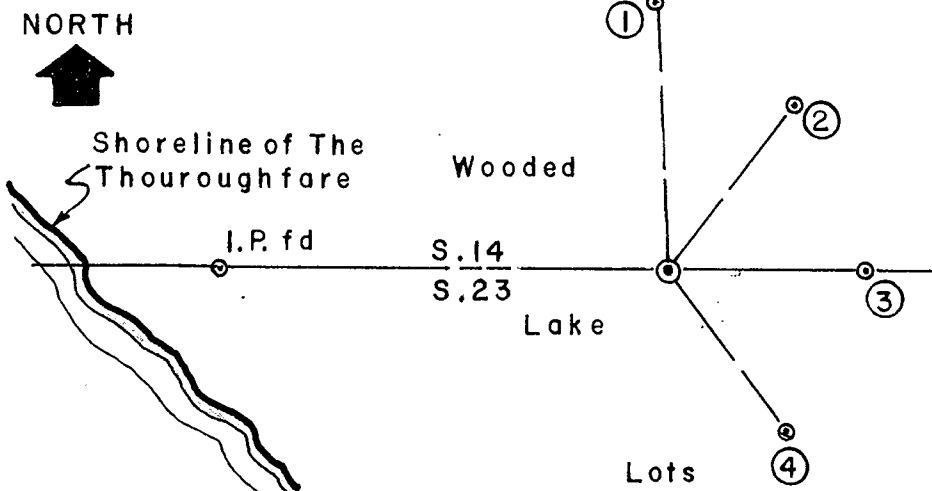
In September 1859, William E. Daugherty/GLO noted no MC wood post set or OBTs per original survey notes as only a marsh had been encountered along section line traversed.

In May 1998, James Will/RLS 1410 indicates a 1" dia. by 24" long standard weight iron pipe set at this corner per Volume 8 of Certified Survey Maps Page 2067 filed in Oneida County records.

In February 2003, Kip Soder/RLS 1731 notes a 1" iron pipe found at this corner per Plat of Survey filed as Drawing No. 756 in Soder Surveying office records at Three Lakes, Wisconsin.

This recovery completed July 21, 2003 and witnessed by North adjoiner/owner Marion Wallenfang.

Plan view map of monument location with bearing and distance ties to a minimum of four(4) described witness or reference monuments of concrete, natural stone, iron, live bearing trees or equivalent material. If applicable, also show a minimum of two(2) bearing and distance ties to any other monument found and not accepted; including the bearing and distance from the accepted monument.



**WITNESS MONUMENT TIES:**

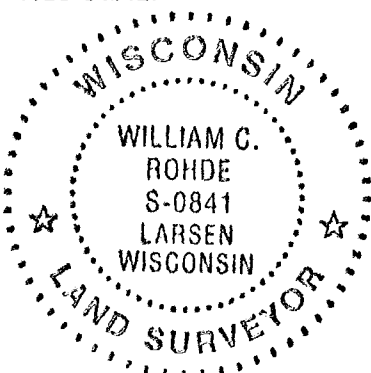
- ① New 8" Pr BT N03°W 14.02'.
- ② New 9" Pr BT N37°E 10.54'.
- ③ New 11" Pr BT East 10.37'.
- ④ New 7" Pw BT S53°E 10.56'.

Standard white poly 'T' corner marker post set 9" West of corner monument.

SCALE: 1" = 10'

Unless otherwise indicated, all bearing tree ties are to a .25" dia. by 2.5" long PK nail with a 1.25" dia. steel washer driven into unblazed right face and a .25" dia. by 2.5" long PK nail with a 2" dia. steel washer stamped BT is also driven into unblazed face of bearing tree at DBH; the basis for measured bearings is by compass to nearest degree and all tie distances are measured horizontal by steel tape corrected to nearest 1/100th feet at standard temperature of 68° F.

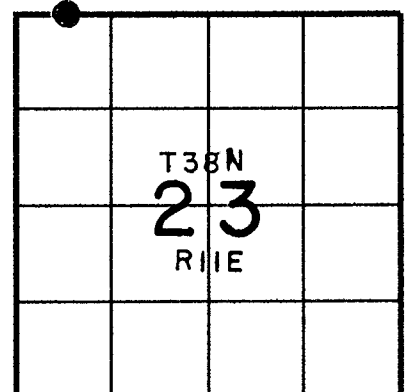
**RLS SEAL:**



**LAND SURVEYOR CERTIFICATE:**

I, William C. Rohde, hereby certify that I am duly licensed as a Professional Land Surveyor in the State of Wisconsin; that this USPLS monument location was determined by me and/or under my direct supervision and control; and that this U.S. Public Land Survey Monument Location Record is true and correct to the best of my knowledge and belief.

Signed William C. Rohde  
 William C. Rohde RLS 841



SECTION LOCATION MAP  
 INDEX NO. N-17/18

Date Signed: August 29, 2003

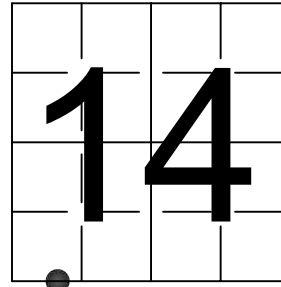
381140034

# U S PUBLIC LAND SURVEY MONUMENT RECORD

NOTE: This form is intended and designed to fulfill all requirements of Wisconsin Administrative Code, Chapter A-E 7.08 U.S. Public Land Survey Monument Record (3) (a-i)

A-E 7.08(3)(a) Identity of corner:  
MEANDER CORNER SOUTH LINE OF  
SECTION 14, TOWNSHIP 38 NORTH,  
RANGE 11 EAST OF THE 4TH PM,  
TOWN OF THREE LAKES,  
COUNTY OF ONEIDA

WISCRS - ONEIDA COUNTY  
N: 212,999.682 USft (XXX,XXX.XXX)  
E: 346,838.378 USft (XXX,XXX.XXX)  
Datum: NAD83 (2011)  
GNSS Method RTK  
GNSS Control WISCORS VRS



The coordinate value shown has been verified by the average of two or more GPS observations at a markedly different time. Coordinates shown in parenthesis are previously published values.

A-E 7.08(3)(b)

Original Surveyor: William E. Daugherty - August 30 - September 5, 1859

Original Accessories:  
NONE

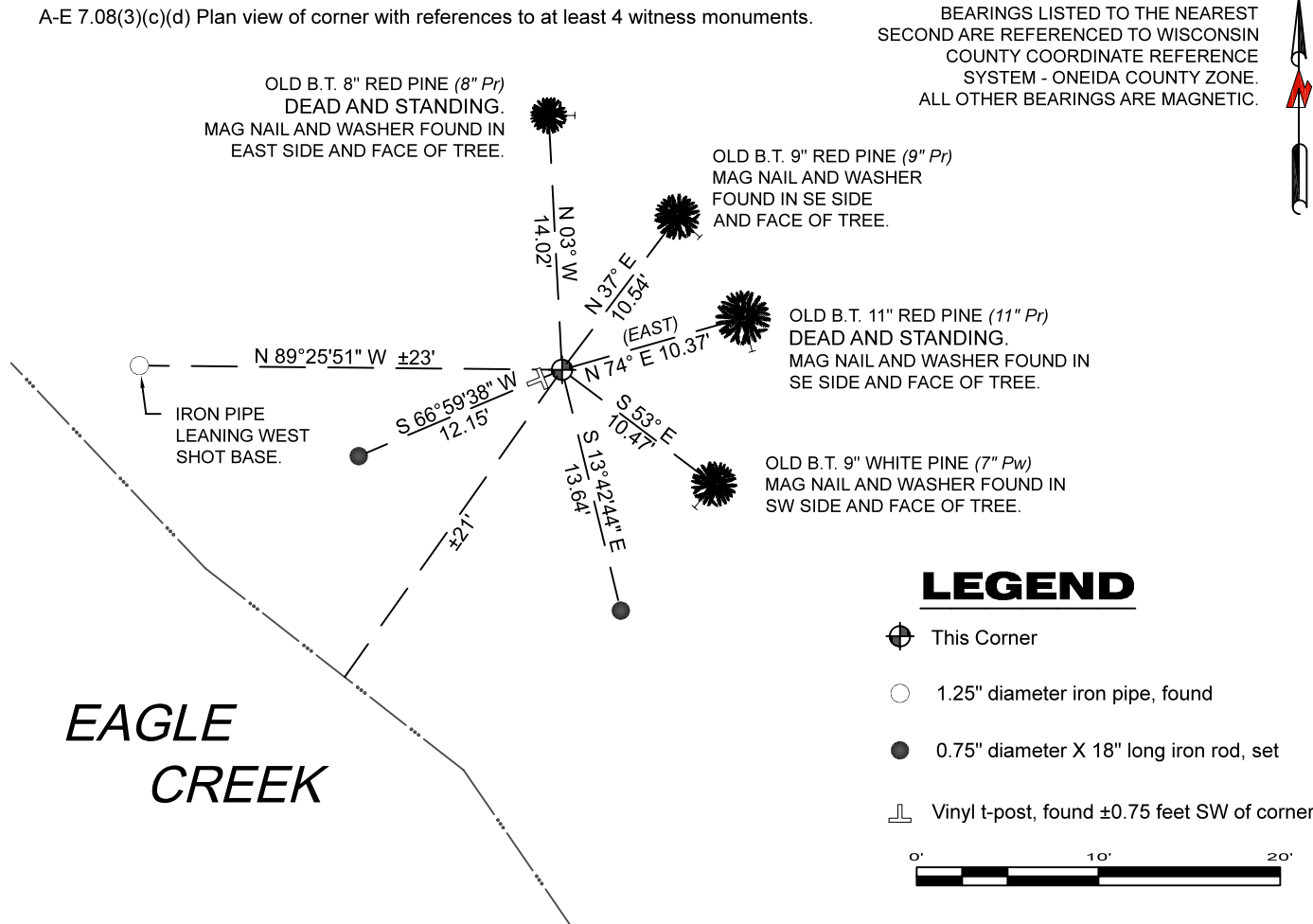
See previous U.S. Public Land Survey Monument Location Record - N 17/18 - August 29, 2003 - Surveyor 0841 - William C. Rohde - THENCE:

May 9, 2005 - Surveyor 1731 - Kip W. Soder - indicates this position as "Oneida Co, aluminum cap monument found" on Oneida County Map #B5879.

June 17, 2005 - Surveyor 1731 - Kip W. Soder - indicates this position as "Oneida Co, aluminum cap monument found" on Oneida County Map #B6291.

December 21, 2023 - I found an Oneida County aluminum monument, being a 2.25" diameter aluminum pipe with a 3.25" diameter aluminum cap stamped to identify the corner location. The monument is flush with grade and ±21 feet from the shore of Eagle Creek. I also found 2 of Rohde's bearing trees alive and in good condition, and 2 dead and standing, and his vinyl T-post. I established 2 new witnesses as shown below.

A-E 7.08(3)(c)(d) Plan view of corner with references to at least 4 witness monuments.

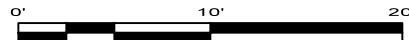


BEARINGS LISTED TO THE NEAREST  
SECOND ARE REFERENCED TO WISCONSIN  
COUNTY COORDINATE REFERENCE  
SYSTEM - ONEIDA COUNTY ZONE.  
ALL OTHER BEARINGS ARE MAGNETIC.



## LEGEND

- This Corner
- 1.25" diameter iron pipe, found
- 0.75" diameter X 18" long iron rod, set
- Vinyl t-post, found ±0.75 feet SW of corner

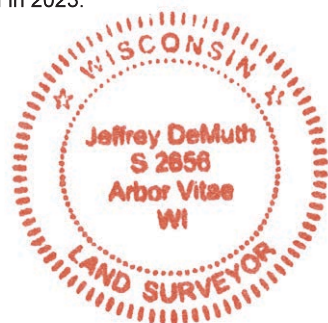


A-E 7.08(3)(e) 2003 Surveyor set an aluminum monument, subsequent, surveyors found the same, as did I in 2023.

A-E 7.08(3)(f) I accept this monument as a FOUND PERPETUATED LOCATION of the corner.

A-E 7.08(3)(g)(h) This corner was not determined through lost-corner-proportionate methods.

A-E 7.08(3)(i) I, Jeffrey L. DeMuth, Professional Land Surveyor No. S-2656, hereby certify that the corner location on this record was determined by me or under my direction and control, and that this U.S. Public Land Survey Monument Record is correct and complete to the best of my knowledge, and belief.



*Handwritten signature of Jeffrey L. DeMuth*

December 29, 2023

SIGNATURE

DATE