

This form is intended to fulfill the requirements of Chapter A-E7.08 (3)(a) thru (i) U.S. Public Land Survey Monument Location Record, Wisconsin Administrative Code. Use the reverse side of form for continuation.

U.S. PUBLIC LAND SURVEY MONUMENT LOCATION RECORD

Recorders Data

USPLS CORNER: WEST WIT MC SECTION: 23 TOWNSHIP: 38 NORTH RANGE: 11 EAST
 NAME OF WATERWAY FOR M.C. CORNER : THE THOROUGHFARE SECTION LINE: NORTH
 (CITY)(VILLAGE)(TOWN) OF: THREE LAKES COUNTY OF: ONEIDA

Description of monument found or placed and all other evidence used as the basis for monument location; including monuments and measurements required if the corner location was reestablished by lost corner proportionate methods. Also indicate name of the original surveyor, original survey date and the corner monument, bearing trees, witness or other reference monuments established, including measured bearing and distance ties, from available survey records.

I set a standard 2" dia. by 30" long aluminum pipe monument with stamped Oneida County cap 3" up as a new Witness MC on section line at 0.48' North of an old 1.25" dia. iron pipe, not of apparent record, noted by Kip Soder/RLS 1731 as being 0.48' South of his retracement of section line from the NW corner to the North 1/4 corner of Section 23, per his Plat of Survey dated February 2003 filed as Drawing No. 756 in Soder Surveying office records in Three Lakes, Wisconsin.

Upon query with Mr. Soder at his office and also with Oneida County Surveyor Michael Romportl, we agreed that I should set the new Witness MC monument as described above.

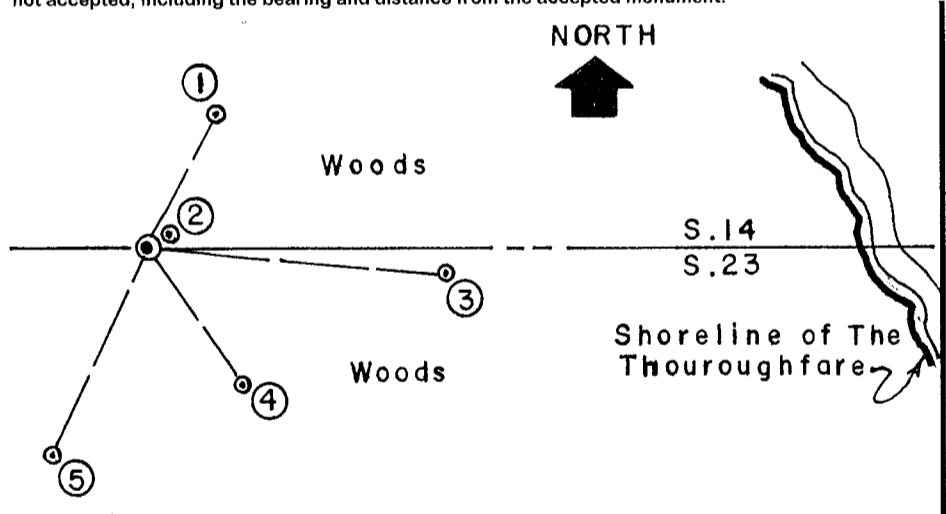
In September 1859, William E. Daugherty/GLO noted no MC wood post or OBTs per original survey notes as only a marsh was traversed on the section line at that time.

In 1998, Jim Will/RLS 1410 had also retraced the section line from the NW to North 1/4 corner of Section 23 as the same right line retraced by Soder in 2003, per Volume 8 of Certified Survey Maps Page 2067 filed in Oneida County records.

This recovery completed July 21, 2003 and witnessed by North adjoiner/owner Keith Kowalski at 706 Staehling Road.

I flagged the monument, 'T' post and all BTs with blaze orange tape.

Plan view map of monument location with bearing and distance ties to a minimum of four(4) described witness or reference monuments of concrete, natural stone, iron, live bearing trees or equivalent material. If applicable, also show a minimum of two(2) bearing and distance ties to any other monument found and not accepted; including the bearing and distance from the accepted monument.

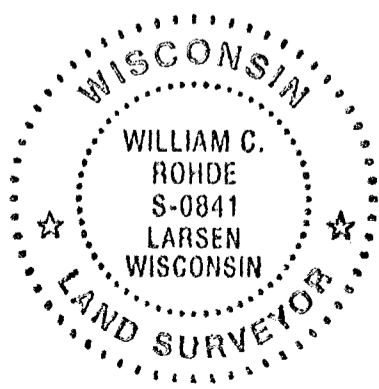


- WITNESS MONUMENT TIES:**
- ① New 7" Hemlock BT N28°E 14.95'.
 - ② New South 7" Hemlock BT of double N55°E 2.29'.
 - ③ New 13" Hemlock BT S85°E 31.15'.
 - ④ New 8.5" Hemlock BT S35°E 17.27'.
 - ⑤ New 8" Hemlock BT S25°W 23.60'.
- Standard white poly 'T' corner marker post set 6" East of the new corner monument, which falls about 74' West of the West shore of "The Thoroughfare", also locally known as Eagle Creek.

SCALE: 1" = 20'

Unless otherwise indicated, all bearing tree ties are to a .25" dia. by 2.5" long PK nail with a 1.25" dia. steel washer driven into unblazed right face and a .25" dia. by 2.5" long PK nail with a 2" dia. steel washer stamped BT is also driven into unblazed face of bearing tree at DBH; the basis for measured bearings is by compass to nearest degree and all tie distances are measured horizontal by steel tape corrected to nearest 1/100th feet at standard temperature of 68° F.

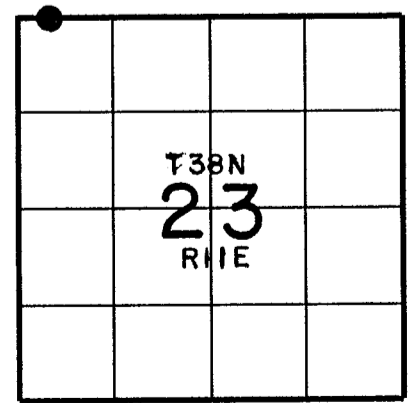
RLS SEAL:



LAND SURVEYOR CERTIFICATE:

I, William C. Rohde, hereby certify that I am duly licensed as a Professional Land Surveyor in the State of Wisconsin; that this USPLS monument location was determined by me and/or under my direct supervision and control; and that this U.S. Public Land Survey Monument Location Record is true and correct to the best of my knowledge and belief.

Signed: *William C. Rohde*
 William C. Rohde RLS 841



SECTION LOCATION MAP
 INDEX NO. N -17/18

Date Signed: August 29, 2003

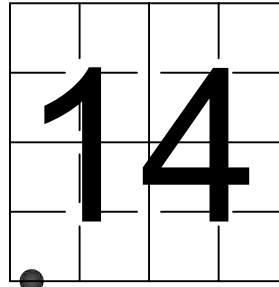
381140037

U S PUBLIC LAND SURVEY MONUMENT RECORD

NOTE: This form is intended and designed to fulfill all requirements of Wisconsin Administrative Code, Chapter A-E 7.08 U.S. Public Land Survey Monument Record (3) (a-i)

A-E 7.08(3)(a) Identity of corner:
MEANDER CORNER SOUTH LINE OF
SECTION 14, TOWNSHIP 38 NORTH,
RANGE 11 EAST OF THE 4TH PM,
TOWN OF THREE LAKES,
COUNTY OF ONEIDA

WISCORS - ONEIDA COUNTY
N: 213,027.319 USft (XXX,XXX.XXX)
E: 346,383.730 USft (XXX,XXX.XXX)
Datum: NAD83 (2011)
GNSS Method RTK
GNSS Control WISCORS VRS



The coordinate value shown has been verified by the average of two or more GPS observations at a markedly different time. Coordinates shown in parenthesis are previously published values.

A-E 7.08(3)(b)

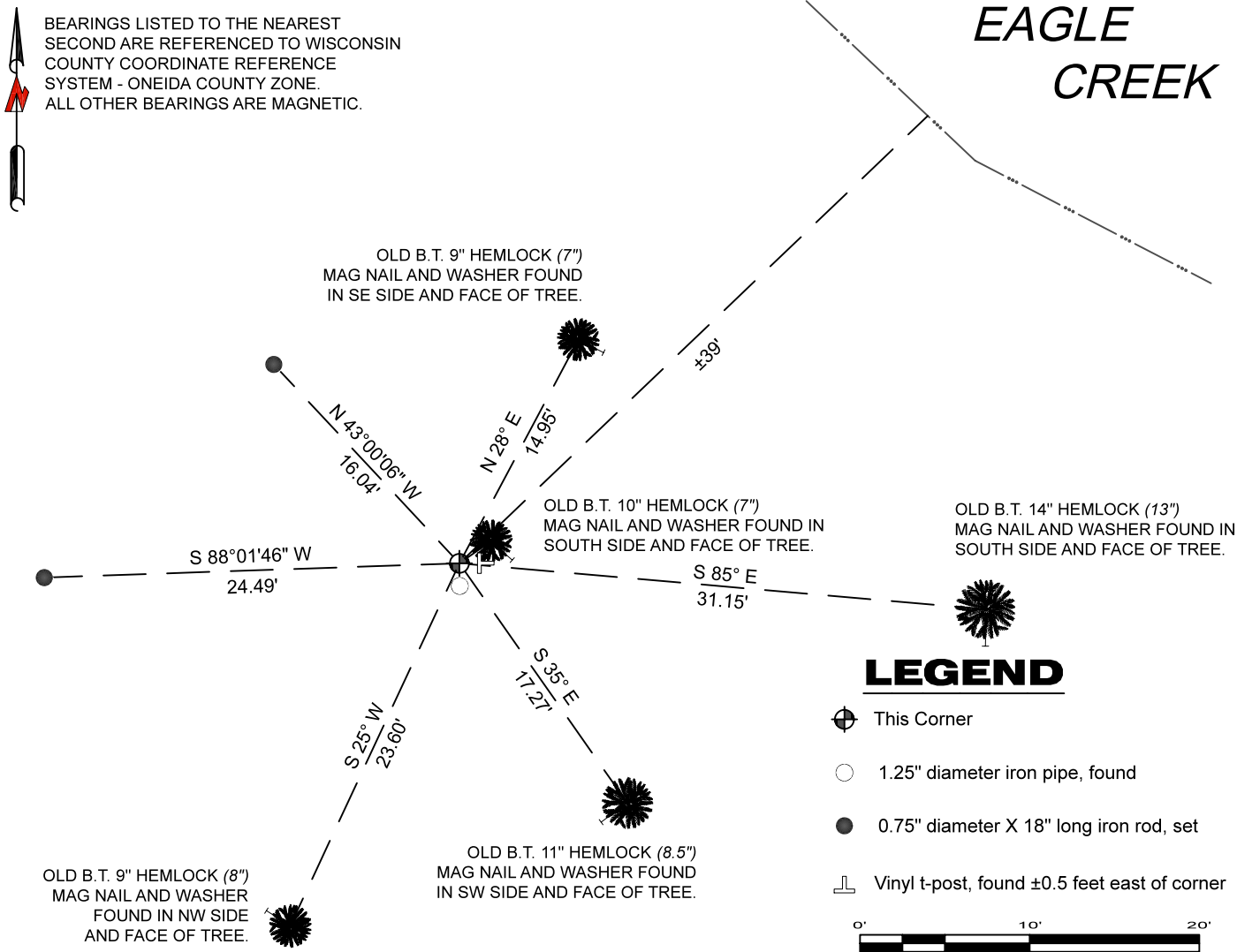
Original Surveyor: William E. Daugherty - August 30 - September 5, 1859

Original Accessories:
NONE

See previous U.S. Public Land Survey Monument Location Record - N 17/18 - August 29, 2003 - Surveyor 0841 - William C. Rohde - THENCE:

December 21, 2023 - I found an Oneida County aluminum monument, being a 2.25" diameter aluminum pipe with a 3.25" diameter aluminum cap stamped to identify the corner location. The monument is flush with grade and ±39 feet from the shore of Eagle Creek. I also found 5 of Rohde's bearing trees alive and in good condition, and his vinyl T-post. I established 2 new witnesses as shown below.

A-E 7.08(3)(c)(d) Plan view of corner with references to at least 4 witness monuments.



A-E 7.08(3)(e) 2003 Surveyor set an aluminum monument, I found the same in 2023.

A-E 7.08(3)(f) I accept this monument as a FOUND PERPETUATED LOCATION of the corner.

A-E 7.08(3)(g)(h) This corner was not determined through lost-corner-proportionate methods.

A-E 7.08(3)(i) I, Jeffrey L. DeMuth, Professional Land Surveyor No. S-2656, hereby certify that the corner location on this record was determined by me or under my direction and control, and that this U.S. Public Land Survey Monument Record is correct and complete to the best of my knowledge, and belief.



Handwritten signature of Jeffrey L. DeMuth

December 26, 2029

SIGNATURE

DATE

4381140037