

Stock No. 26273

U.S. PUBLIC LAND SURVEY MONUMENT RECORD

Index No. L-21

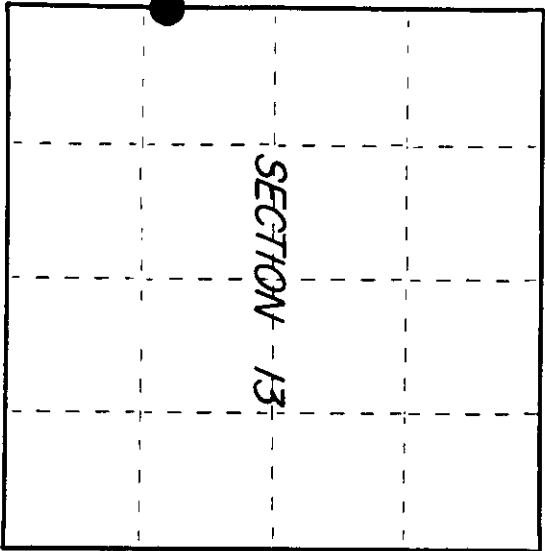
State of Wisconsin

County of Oneida } ss.

I, JAMES R. GROTHMAN, do hereby certify that on the 9th day of October, 1986, I found evidence of the Witness Point corner of Sections 13 and 14 Township 38 North, Range 11 East, Fourth Principal Meridian, as described hereon; and that from this evidence I established a new monument and accessories as described hereon to perpetuate the original location of this corner.

Resident witnesses:

None



○ = Corner monument restored.

History of original corner establishment: Original survey in 1859 by William E. Daugherty. Dependent resurvey in 1941 by Hugh B. Crawford. At 20.00 chains set a concrete monument, 24 inches long, 6 inch diameter, 18 inches in the ground with an iron post 23 inches long, 1 inch diameter embedded in the center with a brass cap marked:

WP	S14	S13	From which the following bear:		
	T38N	R11E	Tamarack	7"	S85-1/4°E 82 lks
	1941		White Pine	16"	S4-1/2°W 49 lks

Description of corner evidence found: G.L.O. monument as described and in place.

The following bearing trees: Tamarack 10" S85°E 54.17 feet; White Pine 24" S4°W 31.96 feet

Description of monument and accessories I established to perpetuate the original location of this corner.

Corner in good condition. Blazed and scribed all found bearing trees and the following new bearing trees:

Red Pine	18"	N69°E	38.85 feet
Red Oak	5"	S51°W	22.33 feet
Steel sign post		North	1.00 foot

Dated at BOERAGE Wis. this 5 day of DECEMBER, 1986.
Signature James R. Grothman (County Surveyor, Registered Land Surveyor, or other duly authorized official) Registration No. 1321
Office of Register of Deeds, County of Oneida I hereby certify that the within instrument was filed in this office for record on the 19 day of DECEMBER, 1986 at 10:00 o'clock A.M.

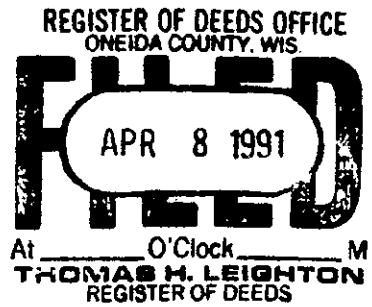
(Register of Deeds)

By James R. Grothman Deputy

3811141200

(e) Describe any material discrepancy between the location of the corner as restored or reestablished and the location of that corner as previously restored or reestablished by distance and direction. Show the discrepancy on the plan view drawing under (d), above. Show the distances between the corner as previously restored or reestablished and (1) the corner as restored or reestablished, and (2) to at least 2 of the witness monuments shown on the drawing in (d), above.

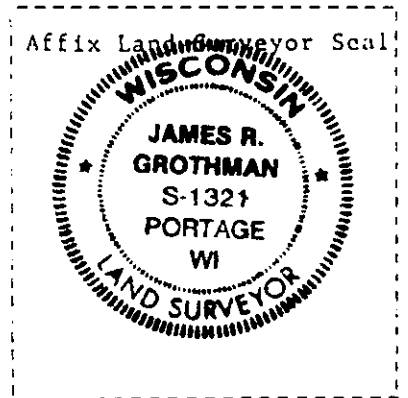
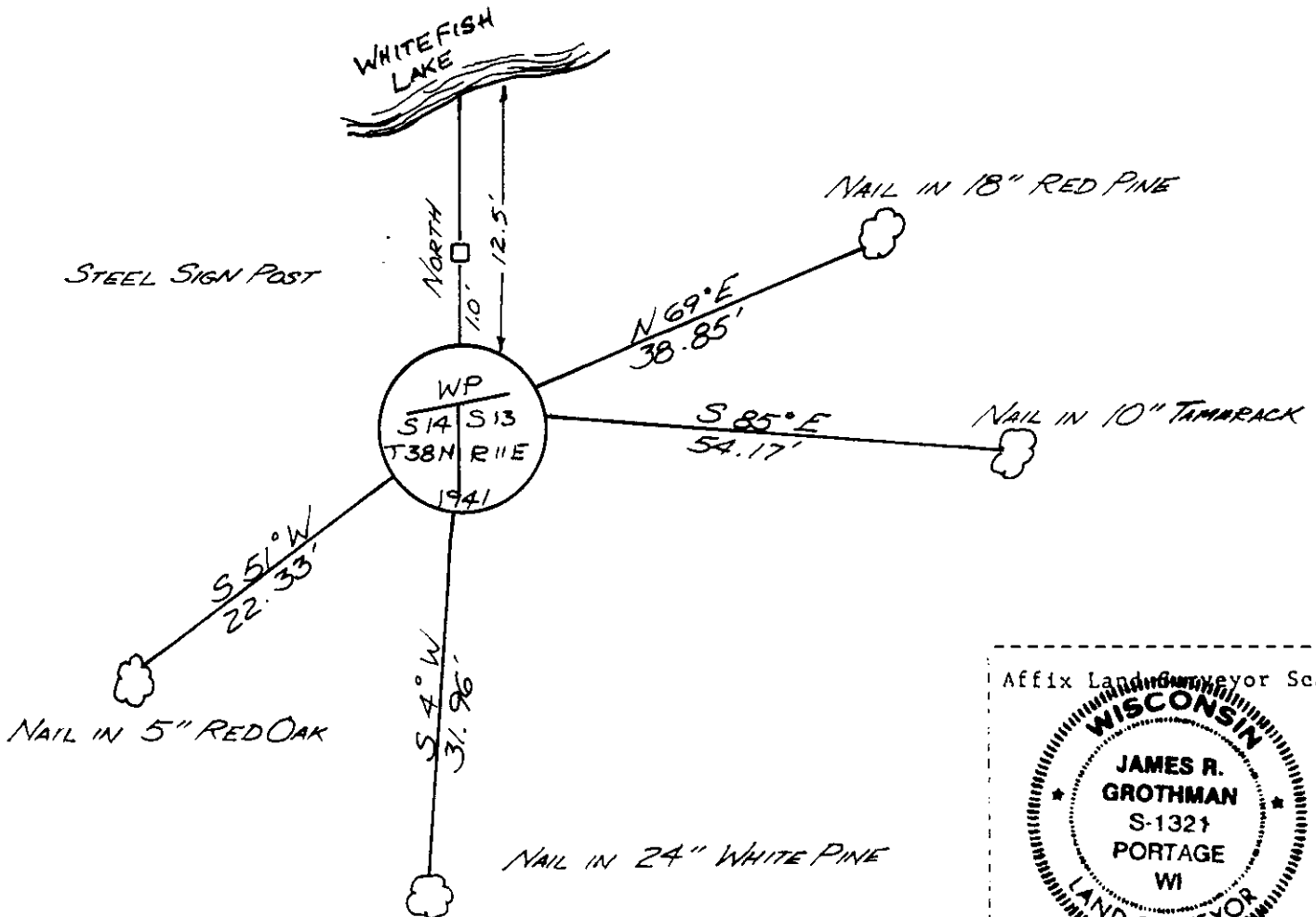
See drawing below



(f) Was the corner restored through acceptance of (1) an obliterated evidence location, or, (2) a found perpetuated location?

Corner was restored through acceptance of a found perpetuated location.

(g&h) Was the corner reestablished through lost corner proportionate methods? If so, show the method, including the directions and distances to other public land survey corners used as evidence or used for proportioning in determining the corner location?



(i) JAMES R. GROTHMAN, Registered Land Surveyor No. 1721
(type or print name) certify that the corner location shown on this record was determined by me or under my direction and control and that this U.S. Public Land Survey Monument Record is correct and complete to the best of my knowledge and belief

James R. Grothman 12/5/86
Signature Date

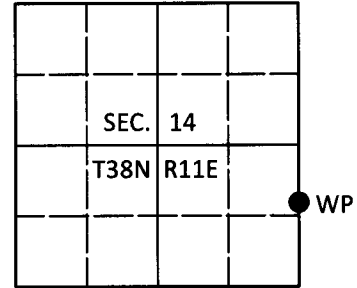
Certificate ready for filing: *P. Frank Hawley* 1/6/87
District Ranger Date

U.S. PUBLIC LAND SURVEY MONUMENT RECORD

Note: This form is intended and designed to fulfill all requirements of Wisconsin Administrative Code, Chapter A-E 7.08 U.S. Public Land Survey Monument Record (3)(a-i).

(a) CORNER LOCATION
 Witness Point of Secs. 13 & 14
 Township 38 North
 Range 11 East of the 4th P.M.
 Town of Three Lakes
 County of Oneida

WISCORS - Oneida County
 N: 214,135.83 USft
 E: 351,376.36 USft
 Datum: NAD 83(2011)
 GNSS Method: RTN - Direct
 GNSS Control: WISCORS VRS



(b) HISTORY OF ORIGINAL CORNER ESTABLISHMENT

Original Surveyor: _____ Original Accessories: _____
 Date of Survey Commenced: _____ See previous USPLS Monument Record
 Completed: _____

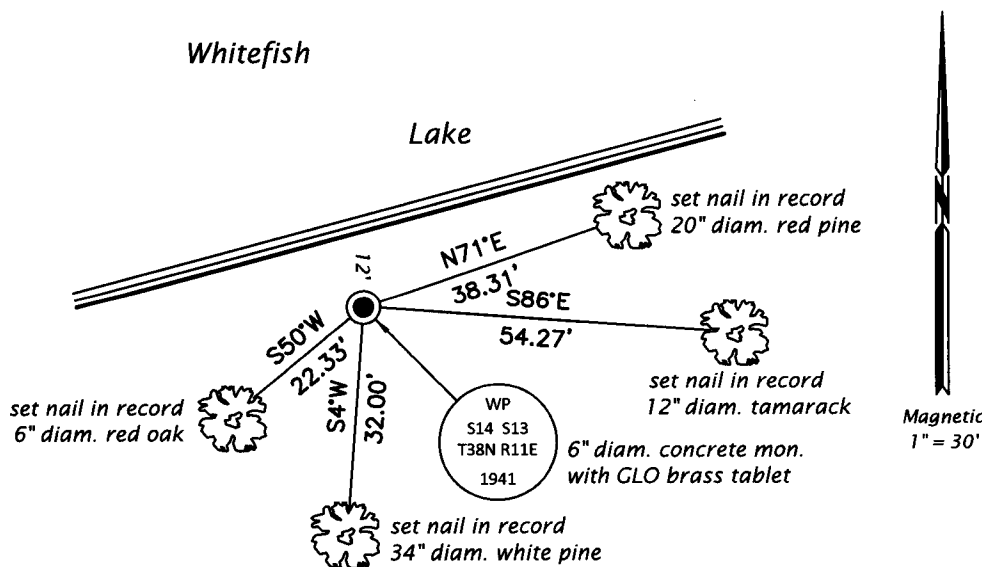
(b)(f)(g)(h) Description of monument found at this corner and if it was accepted, state all evidence (material, testimonial, occupational, plats, records, other monuments) used as a basis for accepting. If not accepted or if nothing was found, state evidence used as basis for establishing location. If re-established through lost corner proportionate methods, indicate all monuments, distances and directions used to establish. Indicate type of monument and sign post found or set.

This is a perpetuation of a previous USPLS Monument Record by James R. Grothman, RLS dated December 5, 1986 and filed in the office of the Oneida County Register of Deeds. A complete history of the corner can be found on the previous monument record. I accept the previous location as a true and faithful perpetuation or reestablishment of the original corner location and further perpetuate it as follows.

March 20, 2018: I found and accepted the record monument, a 6" diam. concrete monument with a 2-1/2" diam. GLO brass tablet projecting 4" above the ground surface. I found accessories as shown below and found a USFS steel sign post bearing North 1.4 ft. dist.

The coordinate value shown has been verified by at least one of the following methods: 1) comparison to a previously GPS determined published value; 2) the value is the average of two or more GPS observations at a markedly different time; 3) one or more distances were measured back to the GPS observed corner from temporary GPS observed offset locations.

(c)(d)(e) Plan view of corner with ties to at least 4 witness monuments. If in disagreement with previously established corner, show the distances between the two corners and also indicate the ties to the disputed.



REGISTER OF DEEDS OFFICE
 ONEIDA COUNTY
 FILED

APR 12 2018

KYLE J. FRANSON
 REGISTER OF DEEDS

(i) I, Jeffrey W. Austin, Professional Land Surveyor No. S-1885, hereby certify that the corner location on this record was determined by me or under my direction and control and that this U.S. Public Land Survey Monument Record is correct and complete to the best of my knowledge and belief.

[Handwritten Signature]

 Signature

4 APR 2018

 Date