

State of Wisconsin

County of Oneida } ss.

U. S. Public Land Survey Monument Record

Index No. N-17

History of original corner establishment:

Original corner was established during the course of the subdivision of T 38 N, R 11 E, by William E. Daugherty, Deputy Surveyor in Aug. & Sept., 1859.

Original B.T.'s:

12" Hemlock N 57° E 6 lks.
10" Birch S 65° E 25 lks.

Description of corner evidence found:

Found a 6.10 6" dia. concrete monument, brass cap in place.

Found the following bearing trees:
20" N. Pine N 100° W 29.56' (Measurements are to a nail in 14" N. Pine S 38° E 46.70' the side of the trees.)

I, James L. Witt, do hereby certify that on the 28th day of Aug., 1985, I found evidence of the Southwest Section corner of Section 14, Township 38 North, Range 11 East, Fourth Principal Meridian, as described hereon; and that from this evidence I established a new monument and accessories as described hereon to perpetuate the original location of this corner.

Resident witnesses:

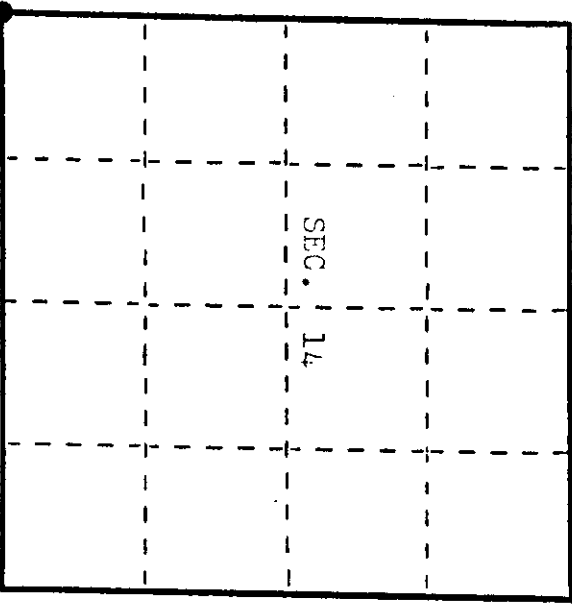
Michael F. Weber

Description of monument and accessories I established to perpetuate the original location of this corner.

Placed and scribed the following new bearing trees:

17" W. Pine S 79° E 57.63' (Measurements are to a nail in the 22" N. Pine N 76° W 46.90' side of the trees.)

Centerline of a gravel road is 27' south.



● = Corner monument restored.

Dated at Eagle River, Wis., this 20th day of September, 1985.

Signature: James L. Witt, Title: Registered Land Surveyor, Registration No. S-14110 (County Surveyor, Registered Land Surveyor, or other duly authorized official)

Office of Register of Deeds, County of Oneida. I hereby certify that the within instrument was filed in this office for record on the 12th day of August, 1985 at 8:00 o'clock P.M.

Signature: Donald D. ... (Register of Deeds)

By: ... Deputy

Describe any material discrepancy between the location of the corner as restored or reestablished and the location of that corner as previously restored or reestablished by distance and direction. Show the discrepancy on the plan view drawing under (d), above. Show the distances between the corner as previously restored or reestablished and (1) the corner as restored or reestablished, and (2) to at least 2 of the witness monuments shown on the drawing in (d), above.

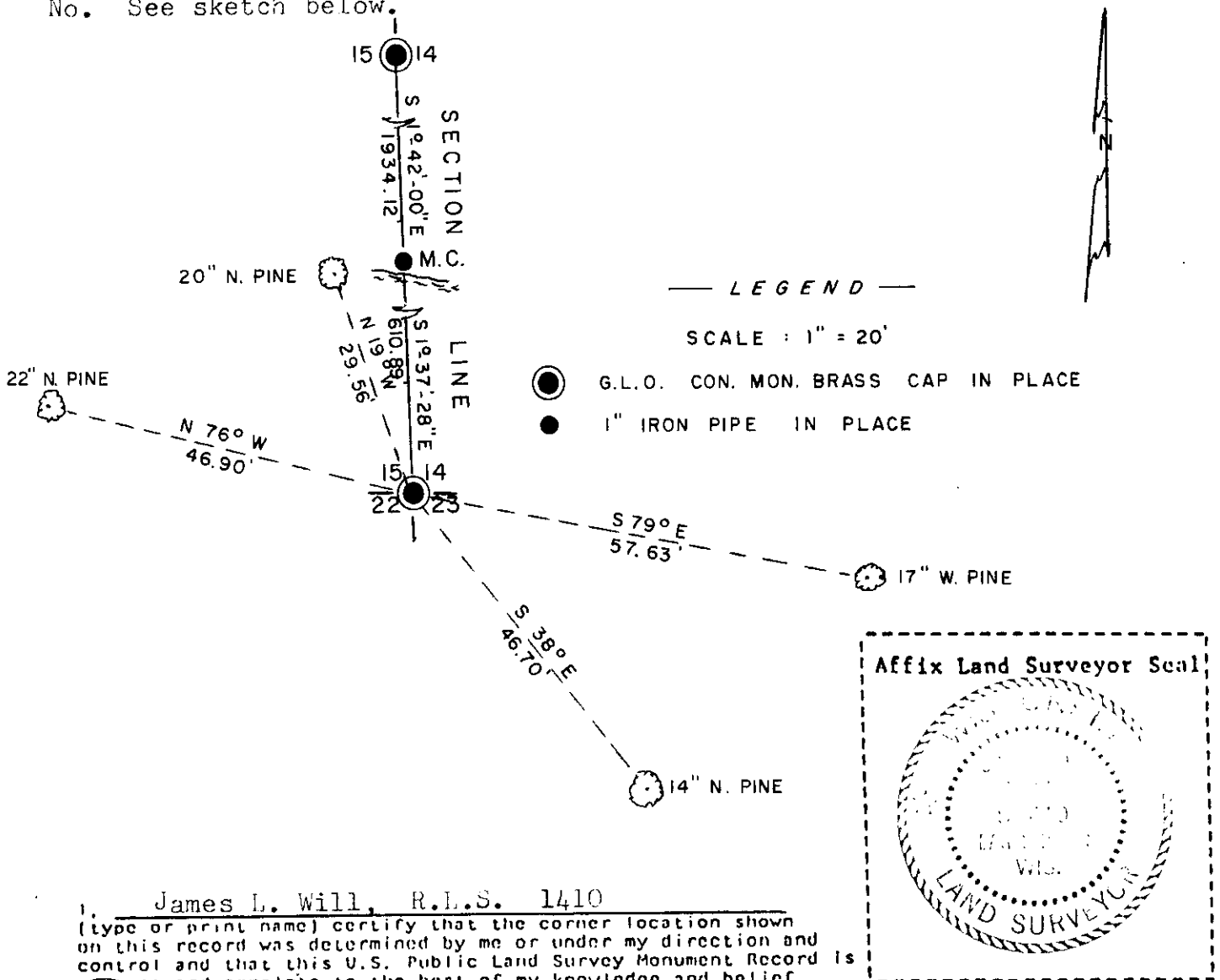
None, See sketch below.

Was the corner restored through acceptance of (1) an obliterated evidence location, or, (2) a found perpetuated location?

Corner was restored through acceptance of a found perpetuated location.

Was the corner reestablished through lost corner proportionate methods? If so, show the method, including the directions and distances to other public land survey corners used as evidence or used for proportioning in determining the corner location?

No. See sketch below.



I, James L. Will, R.L.S. 1410
 (type or print name) certify that the corner location shown on this record was determined by me or under my direction and control and that this U.S. Public Land Survey Monument Record is correct and complete to the best of my knowledge and belief.

James L. Will
 Signature

Sept. 20, 1985
 Date