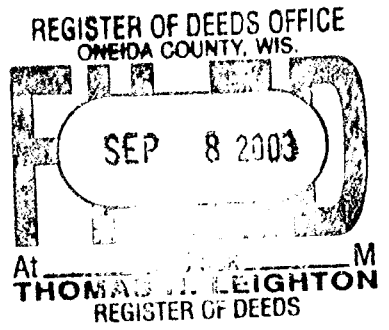


This form is intended to fulfill the requirements of Chapter A-E7.08 (3)(a) thru (i) U.S. Public Land Survey Monument Location Record, Wisconsin Administrative Code. Use the reverse side of form for continuation.



Recorders Data

U.S. PUBLIC LAND SURVEY MONUMENT LOCATION RECORD

USPLS CORNER: EAST WIT MC SECTION: 22 TOWNSHIP: 38 NORTH RANGE: 11 EAST
 NAME OF WATERWAY FOR M.C. CORNER: BIG LAKE SECTION LINE: NORTH
 (CITY)(VILLAGE)(TOWN) OF: THREE LAKES COUNTY OF: ONEIDA

Description of monument found or placed and all other evidence used as the basis for monument location; including monuments and measurements required if the corner location was reestablished by lost corner proportionate methods. Also indicate name of the original surveyor, original survey date and the corner monument, bearing trees, witness or other reference monuments established, including measured bearing and distance ties, from available survey records.

Found and accepted an old 1.25" dia. iron pipe with damaged uncapped top 4" up, which I pulled and drove a standard 2" dia. by 30" long aluminum pipe monument with stamped Oneida County cap 3" up into plumb soil cavity left by the old iron pipe below grade; I left the old 38" long iron pipe flat on grade and flagged monument, 'T' post & BTs blaze orange.

In September 1859, William E. Daugherty/GLO set a wood post as the original corner and noted OBTs: a 6" Mr N72°E 54 links and an 8" Mr S82°E 170 links; all now gone.

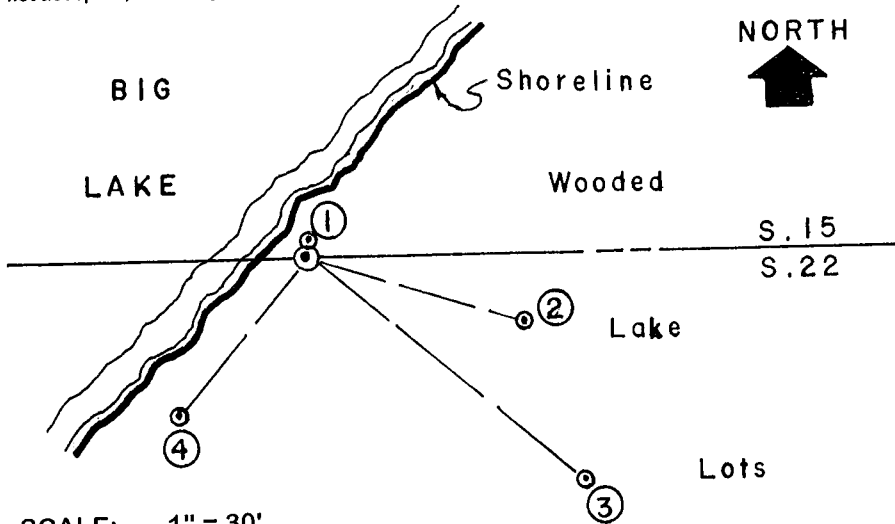
In November 1949, F.R. Wincentsen/RLS 155 notes an "old well point" at this corner per Plat of Survey filed as B-1332 in Oneida County survey records.

James Will/RLS 1410 notes a 1.25" dia. iron pipe found in place at this corner per legend on the following maps filed in Oneida County records:

B-563 dated July 1979, Volume 3 of Certified Survey Maps Page 745 dated August 1979 and Volume 4 of Certified Survey Maps Page 1136 dated April 1985.

This recovery completed July 19, 2003; there were no direct witnesses.

Plan view map of monument location with bearing and distance ties to a minimum of four(4) described witness or reference monuments of concrete, natural stone, iron, live bearing trees or equivalent material. If applicable, also show a minimum of two(2) bearing and distance ties to any other monument found and not accepted; including the bearing and distance from the accepted monument.



WITNESS MONUMENT TIES:

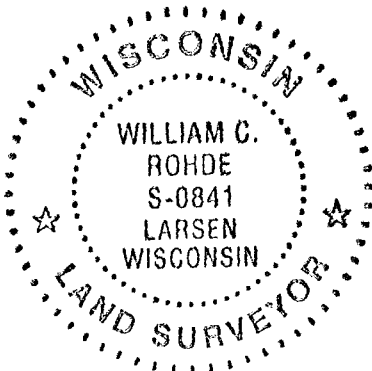
- ① New 7" Spruce BT N10°E 2.37'.
- ② New 11" Pr BT S72°E 35.35' to PK/W in left face.
- ③ New 6" Fir BT S40°E 56.35'.
- ④ New 14" Cedar BT S40°W 31.77'.

Standard white poly 'T' marker post set 8" West of new corner monument, that falls 6' East of rocky rippapped lake shoreline bearing N45°E this date and the corner is located at the NW corner of improved lake lot at 6395 East Big Lake Loop Road.

SCALE: 1" = 30'

Unless otherwise indicated, all bearing tree ties are to a .25" dia. by 2.5" long PK nail with a 1.25" dia. steel washer driven into unblazed right face and a .25" dia. by 2.5" long PK nail with a 2" dia. steel washer stamped BT is also driven into unblazed face of bearing tree at DBH; the basis for measured bearings is by compass to nearest degree and all tie distances are measured horizontal by steel tape corrected to nearest 1/100th feet at standard temperature of 68° F.

RLS SEAL:

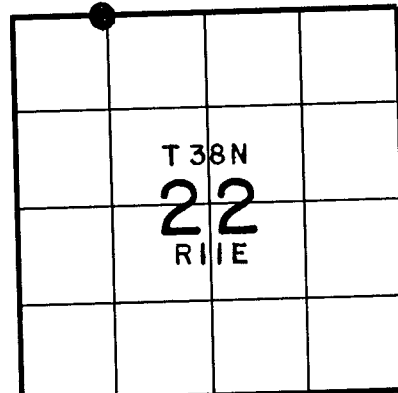


LAND SURVEYOR CERTIFICATE:

I, William C. Rohde, hereby certify that I am duly licensed as a Professional Land Surveyor in the State of Wisconsin; that this USPLS monument location was determined by me and/or under my direct supervision and control; and that this U.S. Public Land Survey Monument Location Record is true and correct to the best of my knowledge and belief.

Signed: *William C. Rohde*
 William C. Rohde RLS 841

Date Signed: August 29, 2003



SECTION LOCATION MAP
 INDEX NO. *N-13/14*

U S PUBLIC LAND SURVEY MONUMENT RECORD

NOTE: This form is intended and designed to fulfill all requirements of Wisconsin Administrative Code, Chapter A-E 7.08 U.S. Public Land Survey Monument Record (3) (a-i)

(a) CORNER LOCATION
 WEST MEANDER CORNER,
 SOUTH LINE OF SECTION 15
 TOWNSHIP 38 NORTH
 RANGE 11 EAST OF THE 4TH PM
 TOWN OF THREE LAKES
 COUNTY OF ONEIDA

WISCORS - ONEIDA COUNTY
 N: 212686.341 USft
 E: 341862.329 USft
 Datum: NAD83 (2011)
 GNSS Method RTN - Direct
 GNSS Control WISCORS VRS



(b) HISTORY OF ORIGINAL CORNER ESTABLISHMENT

Original Surveyor: William E. Daugherty
 Original Accessories: Maple 6 N72E 54 Links
 Maple 8 S82E 170 Links

Date of Survey Commenced: August 30, 1859
 Completed: September 5, 1859

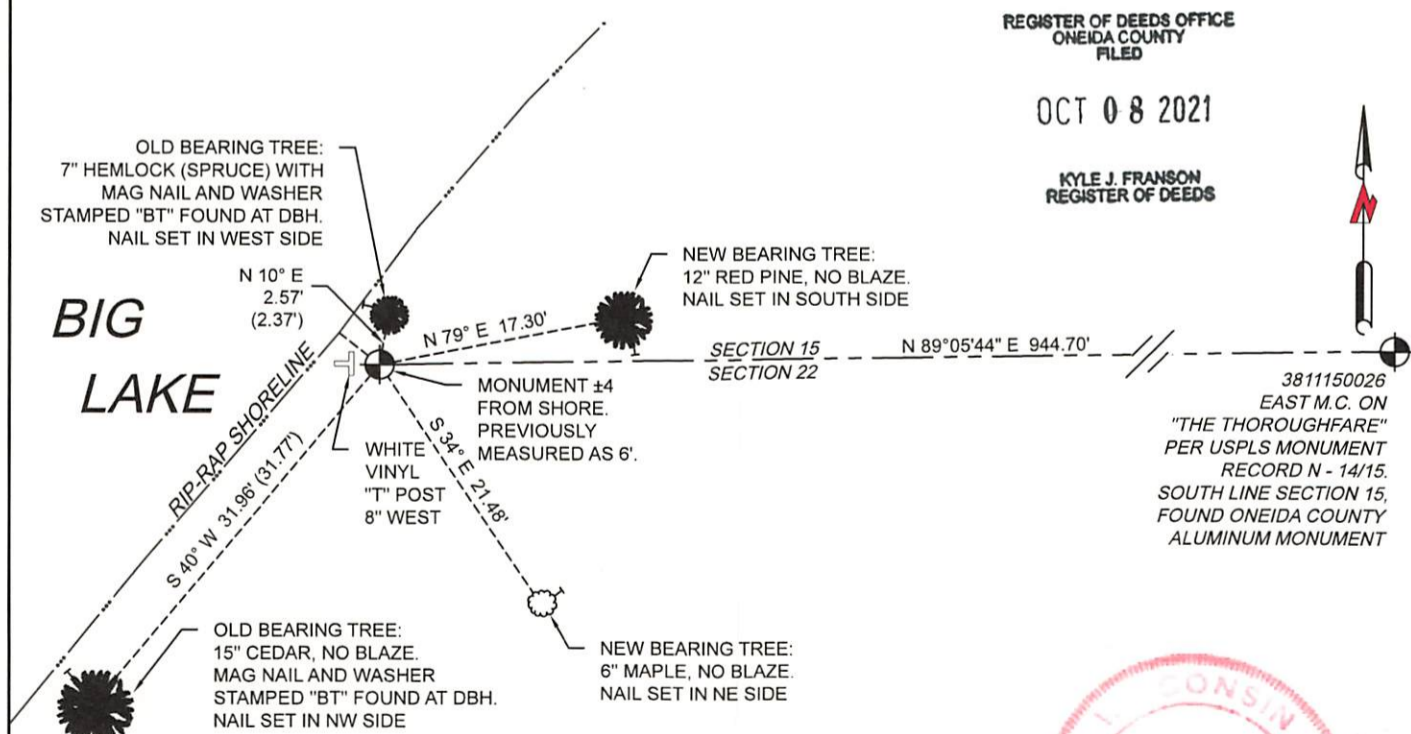
(f)(g)(h) Description of monument found at this corner and if it was accepted, state all evidence (material, testimonial, occupational, plats, records, other monuments) used as a basis for accepting. If not accepted or if nothing was found, state evidence used as basis for establishing location. If re-established through lost corner proportionate methods, indicate all monuments, distances and directions used to establish. Indicate type of monument and sign post found or set.

See previous USPLS Monument Record
 INDEX NO. N-13/14
 3811150029

SEPTEMBER 17, 2021 - I FOUND AND ACCEPTED A 2" DIAMETER ALUMINUM PIPE, WITH A 3 1/4" DIAMETER CAP STAMPED TO IDENTIFY THE CORNER, AND MADE OR VERIFIED WITNESSES AS SHOWN BELOW.

The coordinate value shown has been verified by at least one of the following methods: 1) comparison to a previously GPS determined published value, 2) the value is the average of two or more GPS observations at a markedly different time; 3) one or more distances were measured back to the GPS observed corner from temporary GPS observed offset locations.

(c)(d)(e) Plan view of corner with ties to at least 4 witness monuments. If in disagreement with previously established corner, show the distances between the two corners and also indicate the ties to the disputed.



REGISTER OF DEEDS OFFICE
 ONEIDA COUNTY
 FILED

OCT 08 2021

KYLE J. FRANSON
 REGISTER OF DEEDS

3811150026
 EAST M.C. ON
 "THE THOROUGHFARE"
 PER USPLS MONUMENT
 RECORD N - 14/15,
 SOUTH LINE SECTION 15,
 FOUND ONEIDA COUNTY
 ALUMINUM MONUMENT



(i) I, Jeffrey L. DeMuth, Professional Land Surveyor No. S-2656, hereby certify that the corner location on this record was determined by me or under my direction and control and that this U.S. Public Land Survey Monument Record is correct and complete to the best of my knowledge, and belief

(Handwritten Signature)
 SIGNATURE

OCTOBER 07, 2021
 DATE

N-13/14
 43811150029