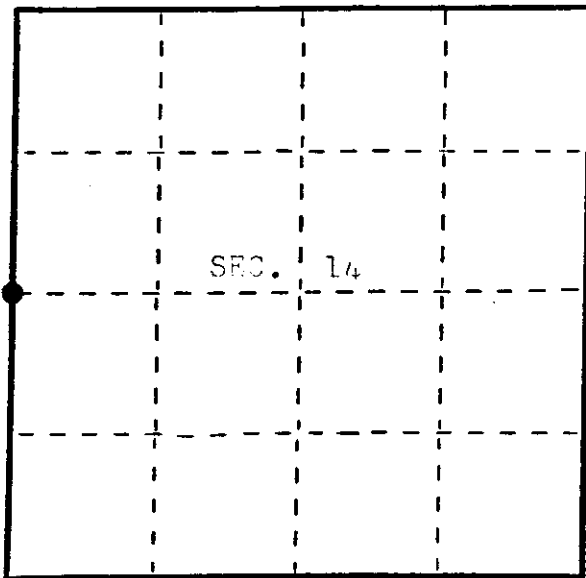


State of Wisconsin }
County of Oneida } ss.

I, James L. Will, do hereby certify that on the 28th day of August, 1985, I found evidence of the West one-quarter corner of Section 14 Township 38, North, Range 11 East, Fourth Principal Meridian, as described hereon; and that from this evidence I established a new monument and accessories as described hereon to perpetuate the original location of this corner.

Resident witnesses:

Michael Weber



● = Corner monument restored.

U. S. Public Land Survey Monument Record

Index No. L-17

History of original corner establishment:

Original corner was established during the subdivision of T 38 N, R 11 E, which was done by William E. Daugherty, Deputy Surveyor in Aug. & Sept., 1859.

Original B.T.'s:

25" W. Pine S 34° W 55 lks.
30" W. Pine N 13° E 61 lks.

Description of corner evidence found:

Found a GLO 6" dia. concrete monument brass cap in place.

Description of monument and accessories I established to perpetuate the original location of this corner.

Blazed and scribed the following new bearing trees:

5" Oak N 70° E 15.98' (Measurements are to a nail in
8" Triple Oak S 14° E 22.33' the side of the trees.)
4" Maple S 37° W 6.15'

Dated at Eagle River, Wis., this 20th day of Sept., 1985.

Signature James L. Will Title Registered Land Surveyor Registration No. S-1410
(County Surveyor, Registered Land Surveyor, or other duly authorized official)

Office of Register of Deeds, County of Oneida, I hereby certify that the within instrument was filed in this office for record on the 12 day of June, 1986 at 3:00 o'clock A. M.

Doris Verag Kuhn
(Register of Deeds)

By Richard A. Pits Deputy

000251185

Describe any material discrepancy between the location of the corner as restored or reestablished and the location of that corner as previously restored or reestablished by distance and direction. Show the discrepancy on the plan view drawing under (d), above. Show the distances between the corner as previously restored or reestablished and (1) the corner as restored or reestablished, and (2) to at least 2 of the witness monuments shown on the drawing in (d), above.

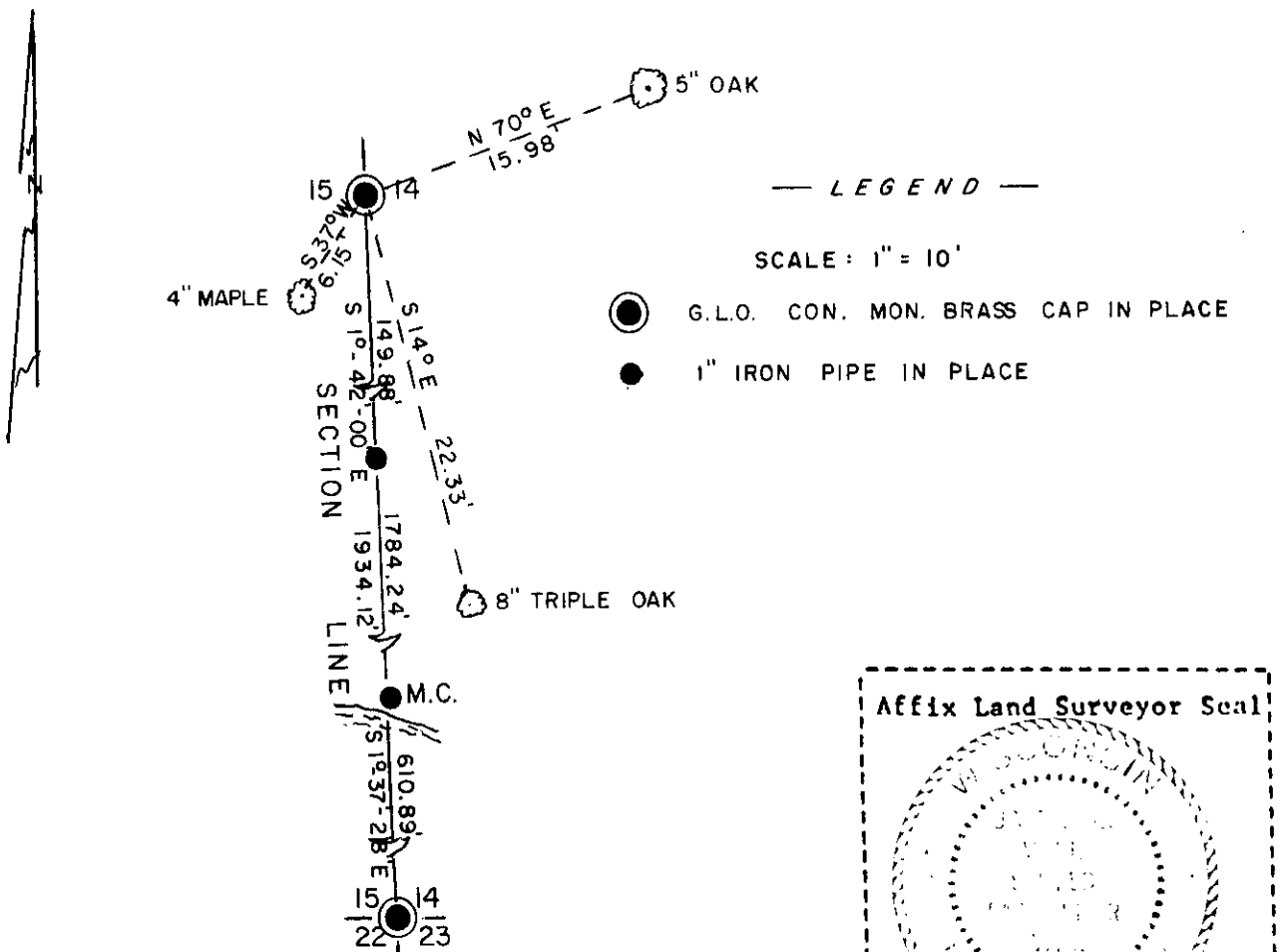
None. See sketch below.

Was the corner restored through acceptance of (1) an obliterated evidence location, or, (2) a found perpetuated location?

Corner was restored through acceptance of a found perpetuated location.

Was the corner reestablished through lost corner proportionate methods? If so, show the method, including the directions and distances to other public land survey corners used as evidence or used for proportioning in determining the corner location?

No. See sketch below.



I, James L. Will, R.L.S. 1410
 (type or print name) certify that the corner location shown on this record was determined by me or under my direction and control and that this U.S. Public Land Survey Monument Record is correct and complete to the best of my knowledge and belief.

James L. Will
 Signature

Sept. 20, 1985
 Date

U.S. PUBLIC LAND SURVEY MONUMENT RECORD

Index No. L-17

State of Wisconsin }
County of Onieda } ss.

I, William B. Cochrane, do hereby certify that on the 14th day of February, 1990, I found evidence of the Quarter corner between Sections 14&15 Township 38 North, Range 11 East, Fourth Principal Meridian, as described hereon; and that from this evidence I established a new monument and accessories as described hereon to perpetuate the original location of this corner.

Resident witnesses:

.....
.....
.....

History of original corner establishment:

Dependent Resurvey in 1941 by Hugh B. Crawford. N2°19'W between Sections 14 and 15, at 38.56 chains, replace iron pipe with a concrete monument, 2 feet long, 6 inches in diameter, with an iron post in center and a brass cap marked; 1/4, S14, S15, 1941. From which the following bear;

Norway Pine	12"	N33°45'E	90 links
Norway Pine	10"	N48°45'W	140½ links

Description of corner evidence found:

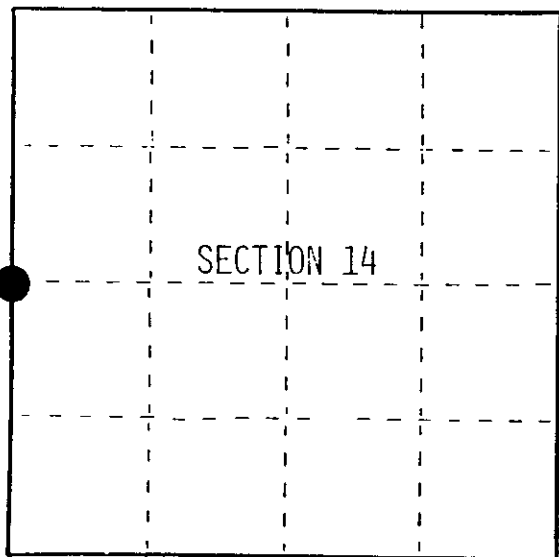
Found monument as described and in place, from which the following bears;

Norway Pine	16"	N33°45'E	59.40 feet
-------------	-----	----------	------------

Description of monument and accessories I established to perpetuate the original location of this corner.

Made a new bearing tree without paint, blazing, scribing, or attaching of signs.

Oak	14"	S68°W	34.40 feet
-----	-----	-------	------------



● = Corner monument restored.

Dated at Hiles, Wis., this 15th day of February, 1990.

Signature *William B. Cochrane* Title Land Surveyor Registration No. S-1107
(County Surveyor, Registered Land Surveyor, or other duly authorized official)

Office of Register of Deeds, County of _____, I hereby certify that the within instrument was filed in this office for record on the _____ day of _____, 19____ at _____ o'clock _____ M.

.....
(Register of Deeds)

By _____ Deputy

FORM NO. 985-A



Stock No. 26273

381155000

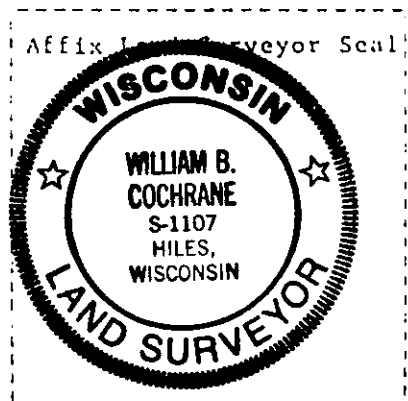
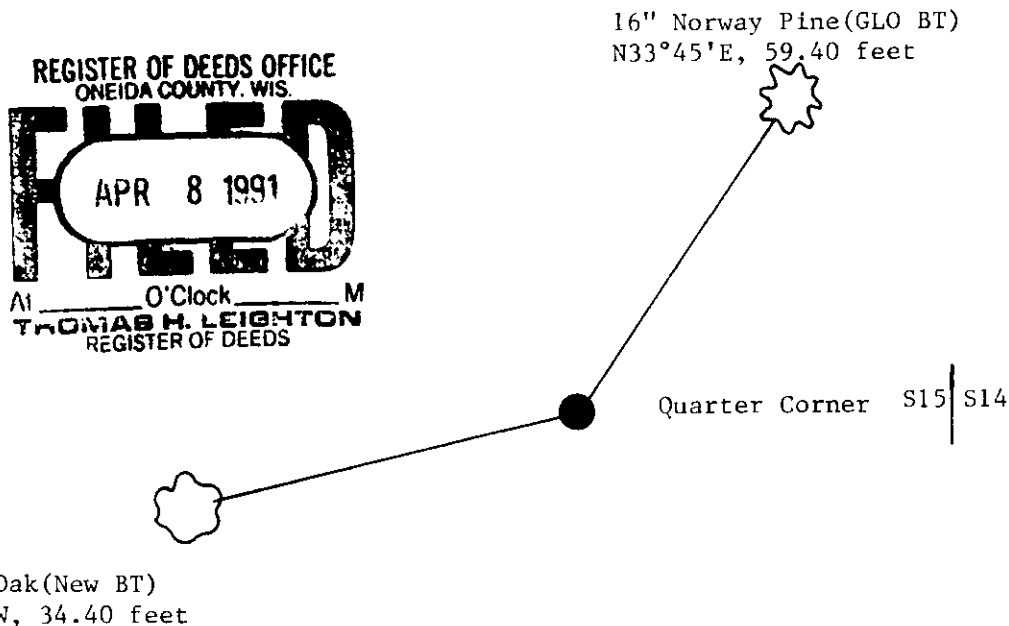
d) Describe any material discrepancy between the location of the corner as restored or reestablished and the location of that corner as previously restored or reestablished by distance and direction. Show the discrepancy on the plan view drawing under (d), above. Show the distances between the corner as previously restored or reestablished and (1) the corner as restored or reestablished, and (2) to at least 2 of the witness monuments shown on the drawing in (d), above.

See drawing below.

(f) Was the corner restored through acceptance of (1) an obliterated evidence location, or, (2) a found perpetuated location?

Restored through acceptance of a found perpetuated location.

(g) Was the corner reestablished through lost corner proportionate methods? If so, show the method, including the directions and distances to other public land survey corners used as evidence or used for proportioning in determining the corner location?



(i) I, William B. Cochrane
(type or print name) certify that the corner location shown on this record was determined by me or under my direction and control and that this U.S. Public Land Survey Monument Record is correct and complete to the best of my knowledge and belief.

William B. Cochrane Feb. 20, 1990
Signature Date

Survey requested by; Cam Gardner 3/1/90
District Ranger Date

U S PUBLIC LAND SURVEY MONUMENT RECORD

NOTE: This form is intended and designed to fulfill all requirements of Wisconsin Administrative Code, Chapter A-E 7.08 U.S. Public Land Survey Monument Record (3) (a-i)

A-E 7.08(3)(a) Identity of corner
 EAST 1/4 CORNER OF SECTION 15
 TOWNSHIP 38 NORTH
 RANGE 11 EAST OF THE 4TH PM
 TOWN OF THREE LAKES
 COUNTY OF ONEIDA

WISCRS - ONEIDA COUNTY
 N: 215,594.962 USft
 E: 345,848.931 USft
 Datum: NAD83 (2011)
 GNSS Method RTN - Direct
 GNSS Control WISCORS VRS



The coordinate value shown has been verified by the average of two or more GPS observations at a markedly different time.

A-E 7.08(3)(b) Description of any record evidence, monument evidence, occupational evidence, testimonial evidence, or any other material evidence.

Original Surveyor: William E. Daugherty

REGISTER OF DEEDS OFFICE
 ONEIDA COUNTY
 FILED

Date of Original Survey Commenced: August 30, 1859
 Completed: September 5, 1859

JAN 19 2022

Original Accessories:

White Pine 25 S. 34° E. 55 lks.
 White Pine 30 N. 13° E. 61 lks

See Previous Monument Record:
 Index No. L-17

KYLE J. FRANSON
 REGISTER OF DEEDS

1941 Dependent Resurvey - Assistant Cadastral Engineer - Hugh B. Crawford - Recovered a 1" diameter iron pipe, that was established from original bearing trees, "as stated by Adolph Kloes, Local Surveyor". In place of pipe, Crawford set a concrete monument, 24" long, 6" in diameter, 18" in the ground, (with pipe set alongside) with a brass cap marked. Crawford made two B.T.'s: Norway Pine 12" N. 33 3/4° E., 90 lks., and Norway Pine 10" N. 48 3/4° W., 140 1/2 lks.

September 20, 1985 - Surveyor 1410 - James L. Will - found the Crawford Monument, and made three new new B.T.'s: 5" Oak N. 70° E., 15.98', 8" Triple Oak, S. 14° E., 22.33', and 4" Maple, S. 37° W., 6.15'.

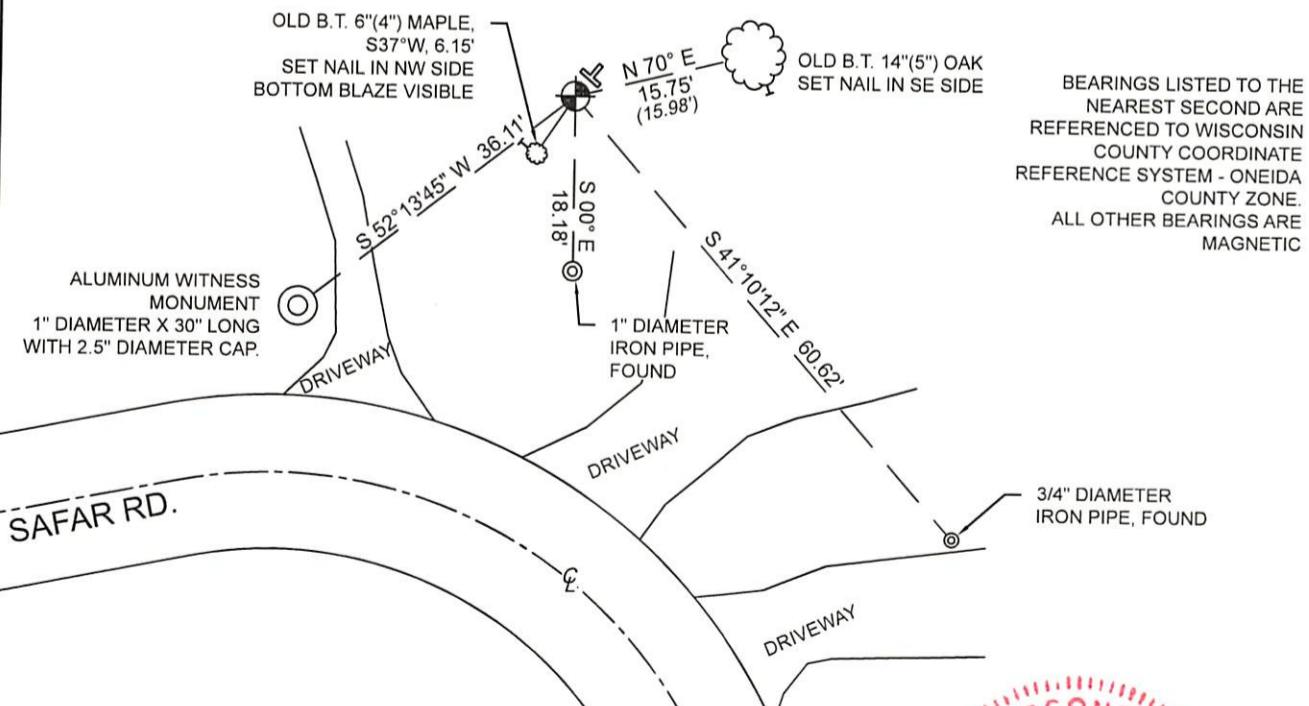
February 14, 1990 - Surveyor 1107 - William B. Cochrane - found the Crawford monument as described and one of Crawford's bearing trees. Norway Pine 16" N. 33°45' E., 59.40 feet, and set another B.T., Oak 14" S. 68° W., 34.40 feet (no mention of Will).

A-E 7.08(3)(f) The corner is a found perpetuated location.

May 26, 2021 - In preparation of a road reconstruction project, I found: a 6" diameter concrete monument with a 3" diameter brass cap stamped to identify the corner location. I also found: a 1 1/2" diameter iron pipe along the north side of the monument, a vinyl T-post N. 45° E. 0.50 feet, and 2 of Will's B.T.'s intact as shown below.

November 04, 2021 - I returned to the location after road reconstruction and found the monument to be the same and intact, and established new witnesses as shown below.

A-E 7.08(3)(c)(d)(e)(h) Plan view of corner with references to at least 4 witness monuments. If in disagreement with previously established corner, show the distances between the two corners and also indicate the ties to the disputed. The directions and distances to other public land survey corners used as evidence or used for determining the corner location.



BEARINGS LISTED TO THE NEAREST SECOND ARE REFERENCED TO WISCONSIN COUNTY COORDINATE REFERENCE SYSTEM - ONEIDA COUNTY ZONE. ALL OTHER BEARINGS ARE MAGNETIC

A-E 7.08(3)(i) I, Jeffrey L. DeMuth, Professional Land Surveyor No. S-2656, hereby certify that the corner location on this record was determined by me or under my direction and control and that this U.S. Public Land Survey Monument Record is correct and complete to the best of my knowledge, and belief

Jeffrey L. DeMuth
 SIGNATURE

December 30, 2021
 DATE

