

Recorders Data

This form is intended to fulfill the requirements of Chapter A-E7.08 (3)(a) thru (i) U.S. Public Land Survey Monument Location Record, Wisconsin Administrative Code. Use the reverse side of form for continuation.

U.S. PUBLIC LAND SURVEY MONUMENT LOCATION RECORD

USPLS CORNER: WEST WIT MC SECTION: 21 TOWNSHIP: 38 NORTH RANGE: 11 EAST
 NAME OF WATERWAY FOR M.C. CORNER : BIG LAKE SECTION LINE: NORTH
 (CITY)(VILLAGE)(TOWN) OF: THREE LAKES COUNTY OF: ONEIDA

Description of monument found or placed and all other evidence used as the basis for monument location; including monuments and measurements required if the corner location was reestablished by lost corner proportionate methods. Also indicate name of the original surveyor, original survey date and the corner monument, bearing trees, witness or other reference monuments established, including measured bearing and distance ties, from available survey records.

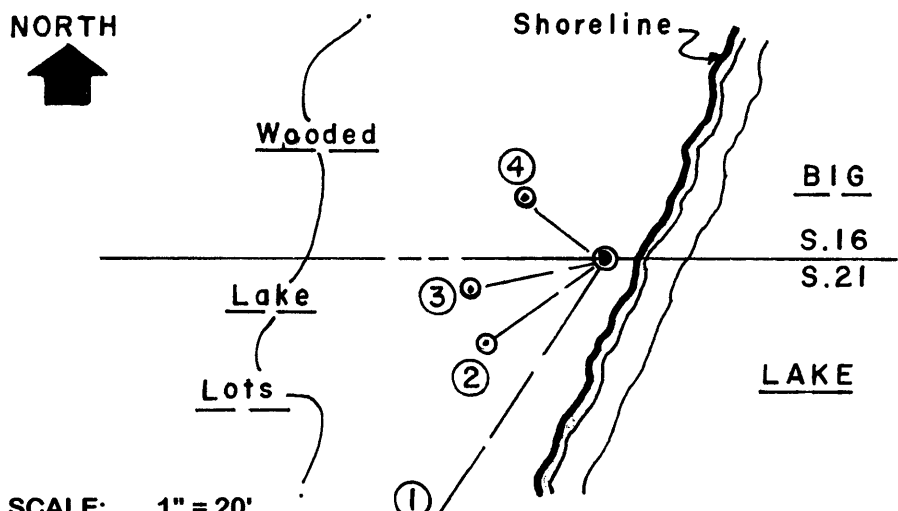
Found a standard 2" dia. galvanized iron pipe monument OK with stamped BLM brass cap 13" up and 3.5'+/- West of existing lake shoreline bearing S25°W. In September 1859, William E. Daugherty/GLO set no wood post as an MC West of NW section corner he had set as the lake has been impounded since due to a dam on the Eagle River in Section 5.

In May 1949, J.M. Abernathy/RLS 101 notes an iron pipe by symbol at this Wit MC and marked new BTs: a 5" Hemlock S37.5°W 20.6' and a 6" Hemlock N69.5°W 15.0' per Plat of Survey filed as C-1047 in Oneida County survey records; iron pipe and SW BT now gone and NW BT is OK as a 15" Hemlock with lower face blaze scar plain.

In 1952-53, Hugh B. Crawford/BLM during a dependent resurvey, set a standard 2" dia. by 30" long galvanized iron pipe monument with stamped BLM brass cap on section line 7 links West of 1.25" dia. iron pipe found on lake shore, more than likely Abernathy's 1949 iron pipe, and that BLM Wit MC monument set is 223.08' West of NW corner of Section 21 in lake; no BTs noted. In 1958, Robert E. Bandow/RLS 104 notes this Wit MC corner as a GLO MC per his Plat of Survey filed as B-5320 in Oneida County survey records.

In October 2001, Timothy J. Moore/RLS 1630 found BLM witness corner monument per Plat of Survey filed as L-1823 in Oneida County survey records. This recovery completed August 12, 2003 and directly witnessed by Steve and Karen Housefield at Fire No. 6410 Schultz Landing Road.

Plan view map of monument location with bearing and distance ties to a minimum of four(4) described witness or reference monuments of concrete, natural stone, iron, live bearing trees or equivalent material. If applicable, also show a minimum of two(2) bearing and distance ties to any other monument found and not accepted; including the bearing and distance from the accepted monument.

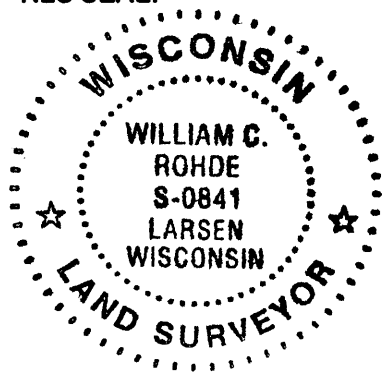


- WITNESS MONUMENT TIES:**
- ① New BT North trunk of 9" twin Hemlock S33°W 35.27'.
 - ② New BT 9" Hemlock S55°W 15.69'.
 - ③ New BT 10" Hemlock S77°W 14.39'.
 - ④ Old BT 15" Hemlock with lower face blaze scar plain N52°W 10.75'.
- No standard white poly 'T' marker post set in lawn area at corner .

SCALE: 1" = 20'

Unless otherwise indicated, all bearing tree ties are to a .25" dia. by 2.5" long PK nail with a 1.25" dia. steel washer driven into unblazed right face and a .25" dia. by 2.5" long PK nail with a 2" dia. steel washer stamped BT is also driven into unblazed face of bearing tree at DBH; the basis for measured bearings is by compass to nearest degree and all tie distances are measured horizontal by steel tape corrected to nearest 1/100th feet at standard temperature of 68° F.

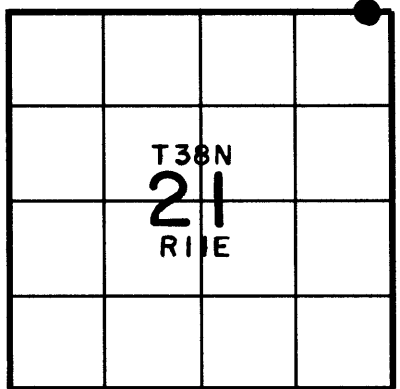
RLS SEAL:



LAND SURVEYOR CERTIFICATE:

I, William C. Rohde, hereby certify that I am duly licensed as a Professional Land Surveyor in the State of Wisconsin; that this USPLS monument location was determined by me and/or under my direct supervision and control; and that this U.S. Public Land Survey Monument Location Record is true and correct to the best of my knowledge and belief.

Signed: *William C. Rohde*
 William C. Rohde RLS 841



SECTION LOCATION MAP
 INDEX NO. N 12-13

SHEET 1 OF 1
 FORM REVISED: 03/15/03

Date Signed: December 1, 2003

381160002