

# U.S. PUBLIC LAND SURVEY MONUMENT RECORD

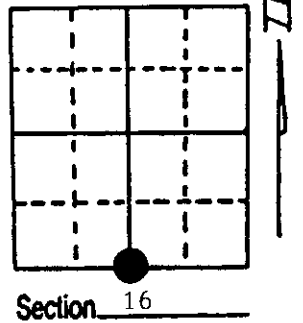
**Note:** This form is intended and designed to fulfill all requirements of Wisconsin Administrative Code, Chapter A-E 7.08 U.S. Public Land Survey Monument Record (3) (a) (b) (c) (d) (e) (f) (g) (h) (i). An additional sheet may be added if necessary to conform with said requirements.

(a) Corner location: Township 38 North

Range 11 East/West

Town/City/Village Three Lakes

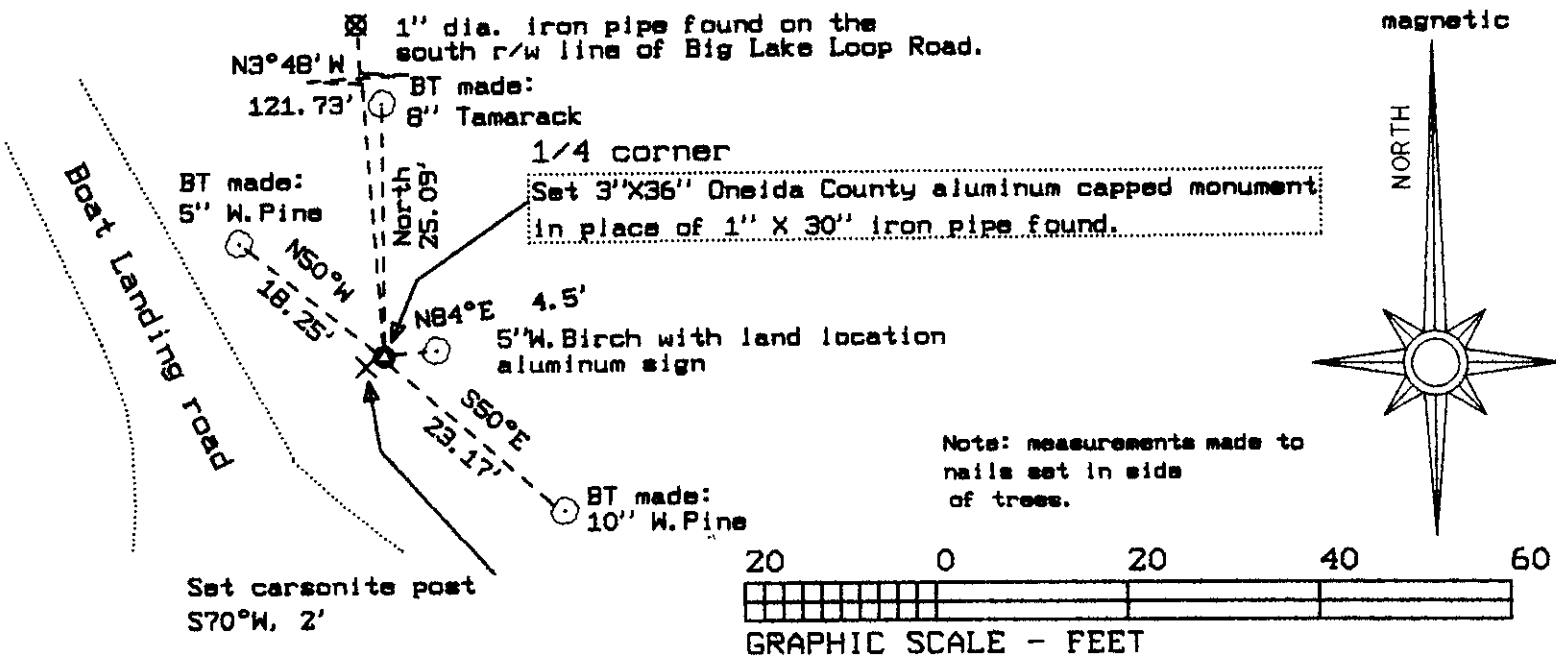
County Oneida



(b) (f) (g) (h) Description of monument found at this corner and if it was accepted, state all evidence (material, testimonial, occupational, plats, records, other monuments) used as a basis for accepting. If not accepted or if nothing was found, state evidence used as basis for establishing location. If reestablished through lost corner proportionate methods, indicate all monuments, distances and directions used to establish. Indicate type of monument found or set and sign post.

- 1859 William Daugherty Set post BT's: 10" Tam. N63°E 45 links  
6" Tam. S21°W 26 links
- 1960 Genisot Engineering Co., R.E. Bandow indicates iron pipe as 1/4 corner.
- 1976 R.H. Winat recovers iron pipe.
- 1979 Inman, Foltz & Assoc., Stuart L. Foltz recovers 1" iron pipe and scribed wood post.
- 1994 Found 1" dia. iron pipe, replaced with County aluminum capped monument. Made 3 BT's, set carsonite post as indicated below.

(c) (d) (e) Plan view of corner with ties to at least 4 witness monuments. If in disagreement with previously established corner, show the distances between the two corners and also indicate the ties to the disputed corner.



(i) I, Stephen J. Favorite RLS#1616  
(type or print name) certify that the corner location on this record was determined by me or under my direction and control and that this U.S. Public Land Survey Monument Record is correct and complete to the best of my knowledge and belief.

Stephen J. Favorite  
Signature

12-29-94  
Date



Index No. N-11

381160020