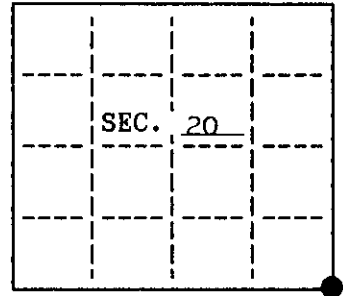


U.S. PUBLIC LAND SURVEY MONUMENT RECORD

Note: This form is intended and designed to fulfill all requirements of Wisconsin Administrative Code, Chapter A-2 7.08 U.S. Public Land Survey Monument Record (3)(a)(b)(c)(d)(e)(f)(g)(h)(i). An additional sheet may be added if necessary to conform with said requirements.

(a) CORNER LOCATION: State Plane Coordinates
 Southeast corner of Sec. 20 X Not available
 Township 38 North Y Not available
 Range 11 East Datum Base _____
 Town/City Three Lakes County of Oneida



(b) HISTORY OF ORIGINAL CORNER ESTABLISHMENT
 Original Surveyor: William E. Daugherty Original B.T.'S
 Date of Survey: Commenced Aug. 30, 1859 16" Hemlock N 45° W 15 lks.
 8" Sugar S 50° W 22 lks.
 Completed Sept. 5, 1859

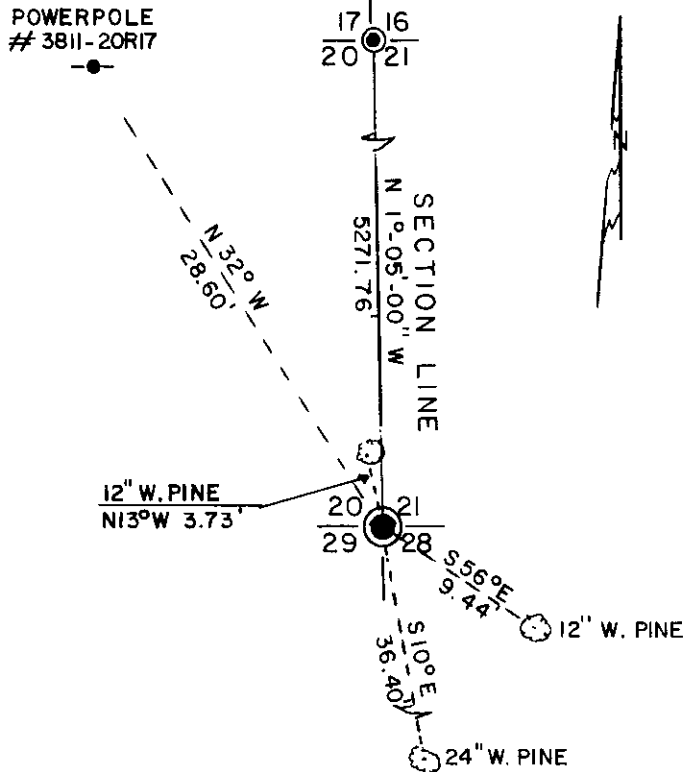
(b)(f)(g)(h) Description of monument found at this corner and if it was accepted, state all evidence (material, testimonial, occupational, plats, records, other monuments) used as a basis for accepting. If not accepted or if nothing was found, state evidence used as basis for establishing location. If reestablished through lost corner proportionate methods, indicate all monuments, distances and directions used to establish. Indicate type of monument and sign post found or set.

Nov. 3, 1953: F.R. Wincentzen used cross in 12"x12" rock 12" below the surface of the ground for the corner. Had the following bearing trees: 12" W. Pine S 10° E 36.1' & powerpole N 32° W 28.2'

Feb. 22, 1990: Found 12"x12" rock with a cross in it 12" below the ground.
 Set an Oneida County aluminum monument over cross in rock.
 Found the following bearing trees measured to a nail in the side:
 24" W. Pine S 10° E 36.40'
 Powerpole #3811-20R17 N 32° W 28.60'
 Made the following new B.T.'s measured to a nail in the side:
 12" W. Pine N 13° W 3.73'
 12" W. Pine S 56° E 9.44'

Did not set a sign post since corner fell in a yard.

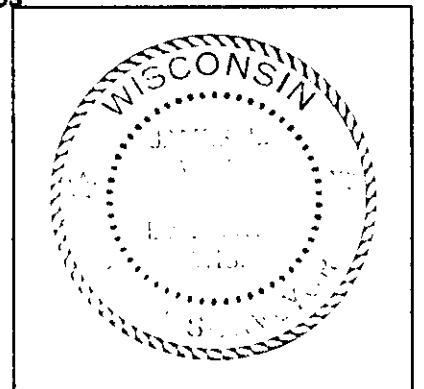
(c)(d)(e) Plan view of corner with ties to at least 4 witness monuments. If in disagreement with previously established corner, show the distances between the two corners and also indicate the ties to the disputed.



LEGEND
 SCALE: 1" = 10'

- ⊙ RAILROAD SPIKE OVER 1" IRON PIPE FOUND IN PLACE
- ⊙ ONEIDA CO. MON. SET OVER CROSS IN 12" X 12" ROCK FOUND IN PLACE
- ⊙ BEARING TREE MEASURED TO A NAIL IN THE SIDE
- POWERPOLE MEASURED TO A NAIL IN THE SIDE

REGISTER OF DEEDS OFFICE
 ONEIDA COUNTY, WIS.
FILED
 JUN 11 1990
 At _____ O'Clock _____ M
THOMAS H. LEIGHTON
 REGISTER OF DEEDS



INDEX NO. R-9

(i) I, James L. Will, R.L.S. #1410 hereby certify that the corner location on this record was determined by me or under my direction and control and that this U.S. Public Land Survey Monument Record is correct and complete to the best of my knowledge and belief.

James L. Will
 Signature

March 27, 1990
 Date

381120 0000