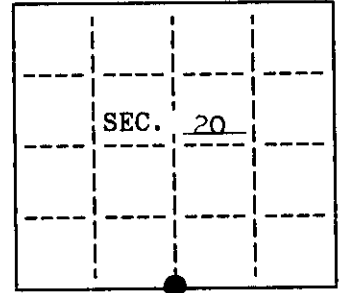


U. S. PUBLIC LAND SURVEY MONUMENT RECORD

Note: This form is intended and designed to fulfill all requirements of Wisconsin Administrative Code, Chapter A-R 7.08 U.S. Public Land Survey Monument Record (3)(a)(b)(c)(d)(e)(f)(g)(h)(i). An additional sheet may be added if necessary to conform with said requirements.

(a) CORNER LOCATION: State Plane Coordinates
 South 1/4 corner of Sec. 20 X Not available
 Township 38 North Y Not available
 Range 11 East Datum Base _____
 Town/City Three Lakes County of Oneida



(b) HISTORY OF ORIGINAL CORNER ESTABLISHMENT
 Original Surveyor: William E. Daugherty Original B.T.'S
 Date of Survey: Commenced Aug. 30, 1859 24" Birch S 45° W 12 lks.
 6" Fir N 20° W 13 lks.
 Completed Sept. 5, 1859

(b)(f)(g)(h) Description of monument found at this corner and if it was accepted, state all evidence (material, testimonial, occupational, plats, records, other monuments) used as a basis for accepting. If not accepted or if nothing was found, state evidence used as basis for establishing location. If reestablished through lost corner proportionate methods, indicate all monuments, distances and directions used to establish. Indicate type of monument and sign post found or set.

March 21, 1990: No corner found. Set a railroad spike by single proportion between section corners to the east and west. Corner is in pavement of Hwy. "45" and 10.5 feet east of the centerline.

Made the following references: 5' tall telephone pole N 34°-29'-20" E 82.23' measured to a nail in the side.

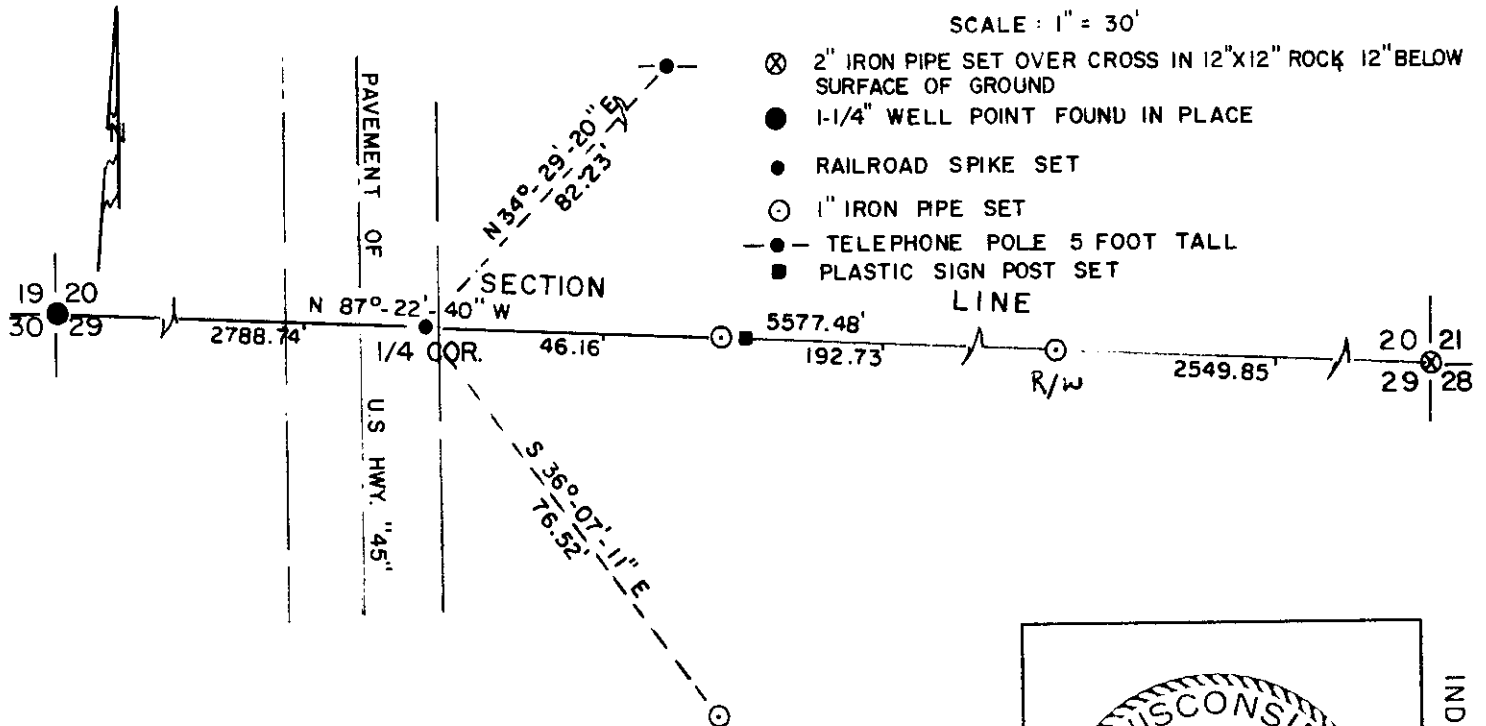
Set 1" iron pipe: S 87°-22'-40" E 46.16'
 S 87°-22'-40" E 238.89'
 S 36°-07'-11" E 76.52'

Set a white plastic sign post by the 1" reference pipe 46.16' east of the corner.

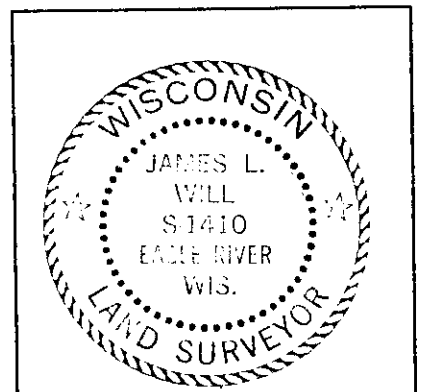
(c)(d)(e) Plan view of corner with ties to at least 4 witness monuments. If in disagreement with previously established corner, show the distances between the two corners and also indicate the ties to the disputed.

LEGEND

SCALE: 1" = 30'



(i) I, James L. Will, R.L.S., #1410
 hereby certify that the corner location on this record was determined by me or under my direction and control and that this U.S. Public Land Survey Monument Record is correct and complete to the best of my knowledge and belief.



INDEX NO. R-7

James L. Will Signature Date 4-2-90

3811200020

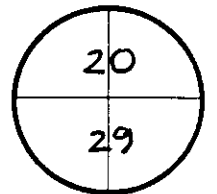
U.S. PUBLIC LAND SURVEY MONUMENT RECORD

DT1291 96 (Replaces ED716)

Wisconsin Department of Transportation

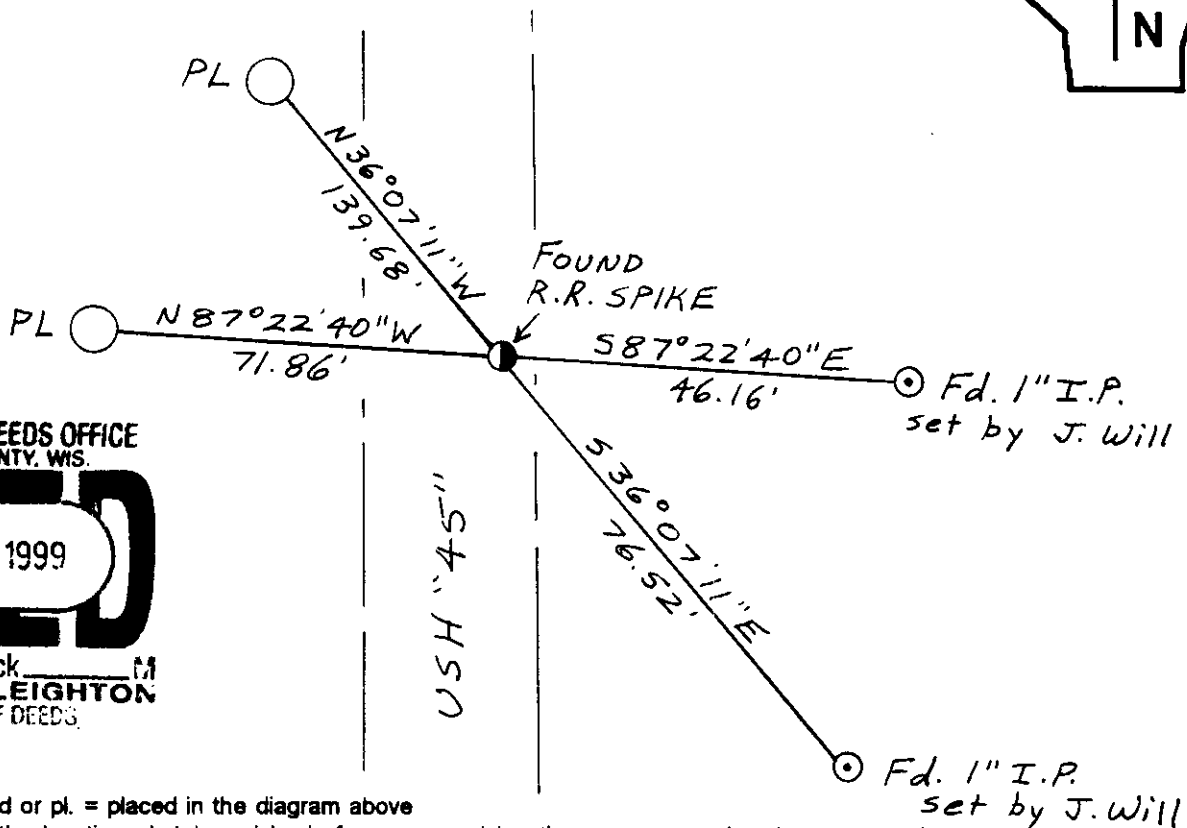
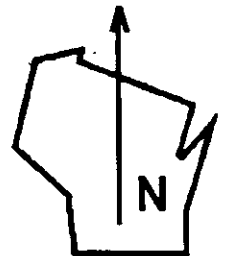
County Name ONEIDA		Name of Township City / Village (Circle One) THREE LAKES	
Surveyor Name BRADFORD C. KIMBALL			
Address, City, State, Zip Code P.O. BOX 777 Rhinelander, WI. 54501			
X (Easting)	Y (Northing)	Latitude	Longitude
Project ID		Coordinate ID	

T. 38 N.-R. 11 E.
4th Principal Meridian
Corner 5 1/4 SEC. 20



HORIZONTAL DATUM	UNITS	COORDINATE SYSTEM
<input type="checkbox"/> NAD 27	<input checked="" type="checkbox"/> English	<input type="checkbox"/> Geodetic
<input type="checkbox"/> NAD 83 (91)	<input type="checkbox"/> Metric	<input type="checkbox"/> State Plane _____ Zone
		<input type="checkbox"/> County _____

Location Diagram, showing corner identification name, bearing and distance references to at least four witness monuments, fence or occupational lines, centerlines of roads, and other site details for reference. Also, show the bearings and distances between the witness monuments.



Indicate fd. = found or pl. = placed in the diagram above
Bearings used in the location sketch and basis for monument location are assumed, unless as noted.
Monumentation Legend / Description of Corner and Witness Monuments:

- FOUND R.R. SPIKE
- ⊙ FOUND 1" IRON PIPE SET BY JAMES L. WILL (4-20-90)
- SET WISDOT DRIVEABLE MAGNETIC ALUMINUM MONUMENT

If applicable, show any discrepancy between the location of the corner as restored or re-established and the location of that corner as previously restored or re-established by bearing and distance. Also, show the bearings and distances between the previous corner and at least two of the witness monuments. See reverse.

381120 0020

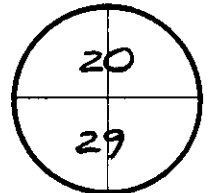
Basis for Monument Location

1. Describe any record evidence, monument evidence, occupational evidence or any other material evidence including traverse measurements that you considered, and whether the monument was found or placed. Explain below, be specific, and attach a separate sheet if necessary.
2. Was the corner:
 - a) found perpetuated,
 - b) restored through acceptance of obliterated evidence,
 - c) relocated by witness testimony, or
 - d) accepted as a remonumented corner of record and maintained with additional monumentation?
3. Was the corner re-established through lost corner proportionate methods? If so, show the method, including the directions and distances to other public land survey corners used as evidence or used in determining the corner location.

Please Type or Print

PERPETUATED EXISTING CORNER LOCATION.
 FOUND A R.R. SPIKE AND 1" I.P. REFERENCES
 (2 WITNESS MONUMENTS) AS CALLED FOR ON
 CERT. SHEET BY JAMES L. WILL DATED 4-2-90.
 SET TWO WISDOT ALUM. MONUMENTS TO
 PERPETUATE CORNER LOCATION.

T. 38 N.-R. 11 E.
 4th Principal Meridian
 Corner 5/4 SEC. 20



Certification

I, Bradford C. Kimball
 (type or print name) certify that the corner location shown on this record was determined by me or under my direction and control and that this U.S. Public Land Survey Monument Record is correct and complete to the best of my knowledge and belief, in accordance with Chapter A-E 7.08 of the Wisconsin Administrative Code.

Section Control Data Sheets have been filed in the County Surveyor's office, showing final measurements by direction and distance between all remonumented corners. Section Control Information is referenced by the following:

Date	Project ID	Sheet(s)
	1600-04-70	

x Bradford C. Kimball 5-2190 11-27-98
 (Registered Land Surveyor Signature and Number) (Date)

