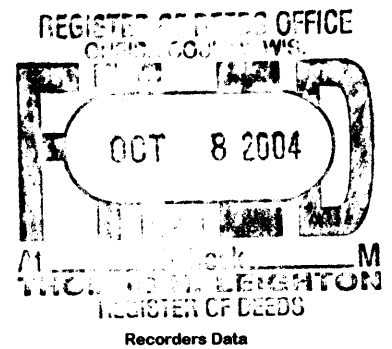


This form is intended to fulfill the requirements of Chapter A-E7.08 (3)(a) thru (i) U.S. Public Land Survey Monument Location Record, Wisconsin Administrative Code. Use the reverse side of form for continuation.

U.S. PUBLIC LAND SURVEY MONUMENT LOCATION RECORD



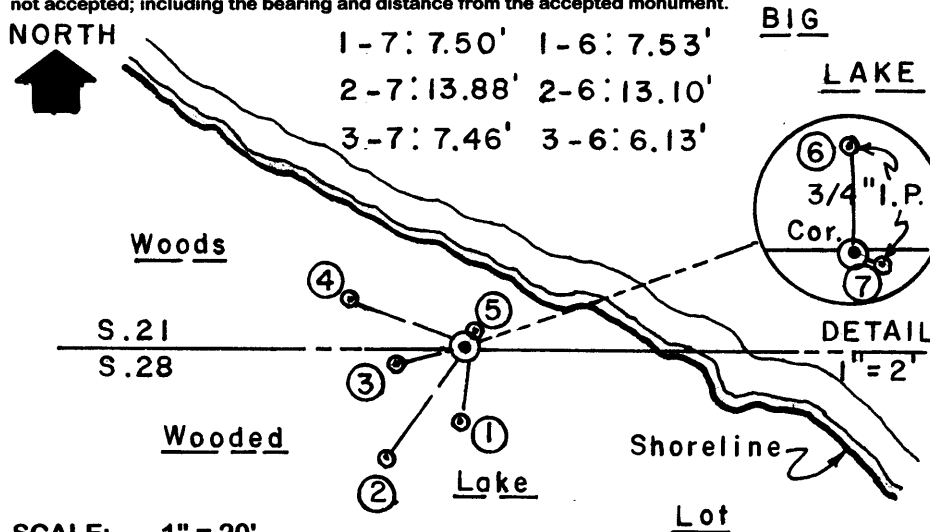
USPLS CORNER: WEST WIT MC SECTION: 28 TOWNSHIP: 38 NORTH RANGE: 11 EAST
 NAME OF WATERWAY FOR M.C. CORNER: BIG LAKE SECTION LINE: NORTH
 (CITY)(VILLAGE)(TOWN) OF: THREE LAKES COUNTY OF: ONEIDA

Description of monument found or placed and all other evidence used as the basis for monument location; including monuments and measurements required if the corner location was reestablished by lost corner proportionate methods. Also indicate name of the original surveyor, original survey date and the corner monument, bearing trees, witness or other reference monuments established, including measured bearing and distance ties, from available survey records.

Found and accepted a plumb and secure old 1/2" dia. iron rod painted red with uncapped top 9" above grade; I also found a 3/4" dia. iron pipe 3" SE with uncapped top 1" above grade and a 3/4" dia. iron pipe North 14" with bushing at top 1" above grade. I left the iron rod in place and drove a standard 2" dia. by 30" long aluminum pipe monument over it with stamped Oneida County cap 6" above grade. Corner falls S25°W 8.5' from existing lake shoreline bearing N65°W at the NE corner of an improved lake lot at #1204 Pinewood Road. I referenced all three monuments for record per ties below.

In August-September 1859, William E. Daugherty/GLO set a wood post as original corner and noted OBTs: a 12" Pine S45°W 25 links and a 7" Birch N80°W 32 links; all are now obliterated within lakebed due to impoundment by damming of Eagle River. In September 1964, Joseph C. Kirby/RLS 253 notes an iron pipe at this Witness MC and BTs: a 7" Birch N22°E 2.0' and an 8" Birch S25°W 13.2' per plat of survey filed as B-1331 in Oneida County survey records.; both BTs found but SW BT tipped 15°+/-SW so monuments found could not be accurately verified. In November 1967, Forrest Wincentsen/RLS 155 noted an iron pin at this Witness MC and same BTs as noted by Kirby in 1964, per Pages 222 and 223 of Wincentsens Book 1 in Oneida County survey records; therefore I assumed that Wincentsen had not found Kirby's noted iron pipe, so I accepted the iron rod as iron pin noted by Wincentsen in 1967. In May 1993, James L. Will/RLS 1410 notes a 1" iron pipe found in place at this Witness Corner per plat of survey filed as B-2774 in Oneida County survey records; I did not confirm which existing iron pipe I had found would apply without a retracement of his survey. Future land surveyors will need to judge which recovered monument to use as the Witness MC. This recovery completed August 3, 2004; there were no direct witnesses.

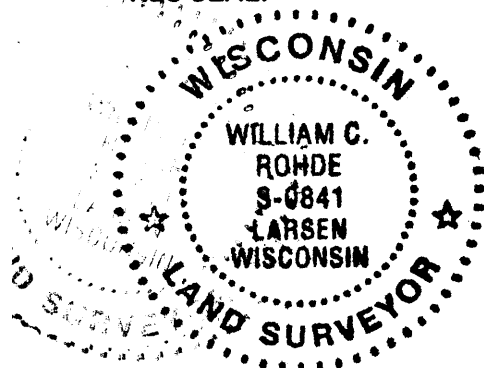
Plan view map of monument location with bearing and distance ties to a minimum of four(4) described witness or reference monuments of concrete, natural stone, iron, live bearing trees or equivalent material. If applicable, also show a minimum of two(2) bearing and distance ties to any other monument found and not accepted; including the bearing and distance from the accepted monument.



- WITNESS MONUMENT TIES:**
- ① New 5.5" Cedar BT S05°W 7.60'.
 - ② Old 8" Bw BT S35°W 13.90' with 18" long open & scribed face blaze.
 - ③ New 7.5" Cedar BT S75°W 7.32'.
 - ④ New 6" Mr BT N67°W 13.11'.
 - ⑤ Old 12" Bw BT N20°E 1.75'.
- I set a standard white poly "T" marker post 6" SSW of corner monument.
 Corner falls on a steep slope up to the West from lakeshore in wooded area.

Unless otherwise indicated, all bearing tree ties are to a .25" dia. by 2.5" long PK nail with a 1.25" dia. steel washer driven into unblazed right face and a .25" dia. by 2.5" long PK nail with a 2" dia. steel washer stamped BT is also driven into unblazed face of bearing tree at DBH; the basis for measured bearings is by compass to nearest degree and all tie distances are measured horizontal by steel tape corrected to nearest 1/100th feet at standard temperature of 68° F.

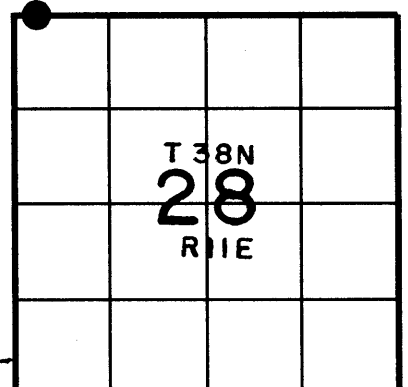
RLS SEAL:



LAND SURVEYOR CERTIFICATE:

I, William C. Rohde, hereby certify that I am duly licensed as a Professional Land Surveyor in the State of Wisconsin; that this USPLS monument location was determined by me and/or under my direct supervision and control; and that this U.S. Public Land Survey Monument Location Record is true and correct to the best of my knowledge and belief.

Signed: *William C. Rohde*
 William C. Rohde RLS 841



SECTION LOCATION MAP
 INDEX NO. R 9-10

Date Signed: September 4, 2004

3811210037