

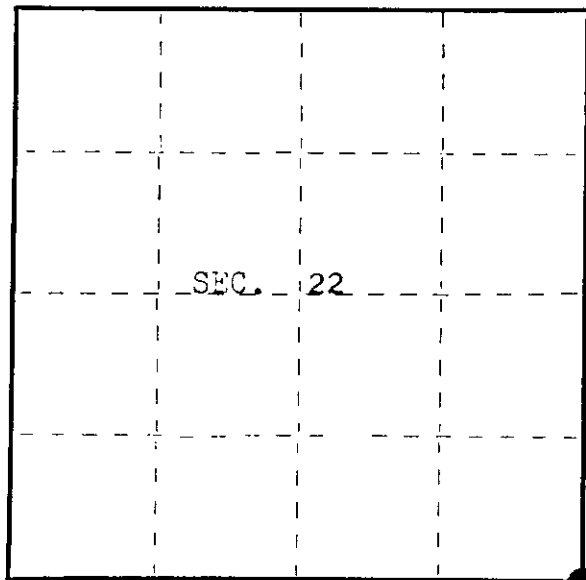
FORM 985
U.S. GOVERNMENT PRINTING OFFICE: 1984
Stock No. 26272

State of Wisconsin }
County of Oneida } ss.

I, James L. Will, do hereby certify that on the 26th day of June, 1984, I found evidence of the Southeast Section corner of Section 22 Township 38 North, Range 11 East, Fourth Principal Meridian, as described hereon; and that from this evidence I established a new monument and accessories as described hereon to perpetuate the original location of this corner.

Resident witnesses:

Kip W. Soder



● = Corner monument restored.

CERTIFIED LAND CORNER RESTORATION
U. S. PUBLIC LAND SURVEY MONUMENT RECORD
History of original corner establishment:

Index No. R-17

Original corner was established in the course of the subdivision of T 38 N, R 11 E in September of 1859 by William E. Daugherty, Deputy Surveyor.

Original B.T.'s:

- 12" Hemlock N 50° W 11 lks.
- 10" Sugar S 31° W 14 lks.

Description of corner evidence found:

Found a 6" dia. GLO concrete monument brass cap in centerline of road broken off.

Found the following GLO bearing trees:

- 18" Maple N 24° W 32.42' (Measurement to nail in side of tree)
- Hemlock Stump S 13° E 59.40'
- Hemlock Stump S 31° W 73.59'

Also found the following bearing trees in place:

- 8" Maple S 30° E 38.30' (Measurements are to a nail in the side of the trees.)
- 8" Y. Birch S 24° W 47.00'
- 8" Y. Birch N 8° E 34.00'

Description of monument and accessories I established to perpetuate the original location of this corner.

Dated at Eagle River, Wis., this 27th day of June, 1984.

Signature James L. Will Title Registered Land Surveyor Registration No. S-1410
(County Surveyor, Registered Land Surveyor, or other duly authorized official)

Office of Register of Deeds, County of Oneida I hereby certify that the within instrument was filed in this office for record on the 12 day of June, 1986 at 8:00 o'clock A.M.

Doris Verage Kuehn
(Register of Deeds)

By Cynthia A. Pires Deputy

3811220000

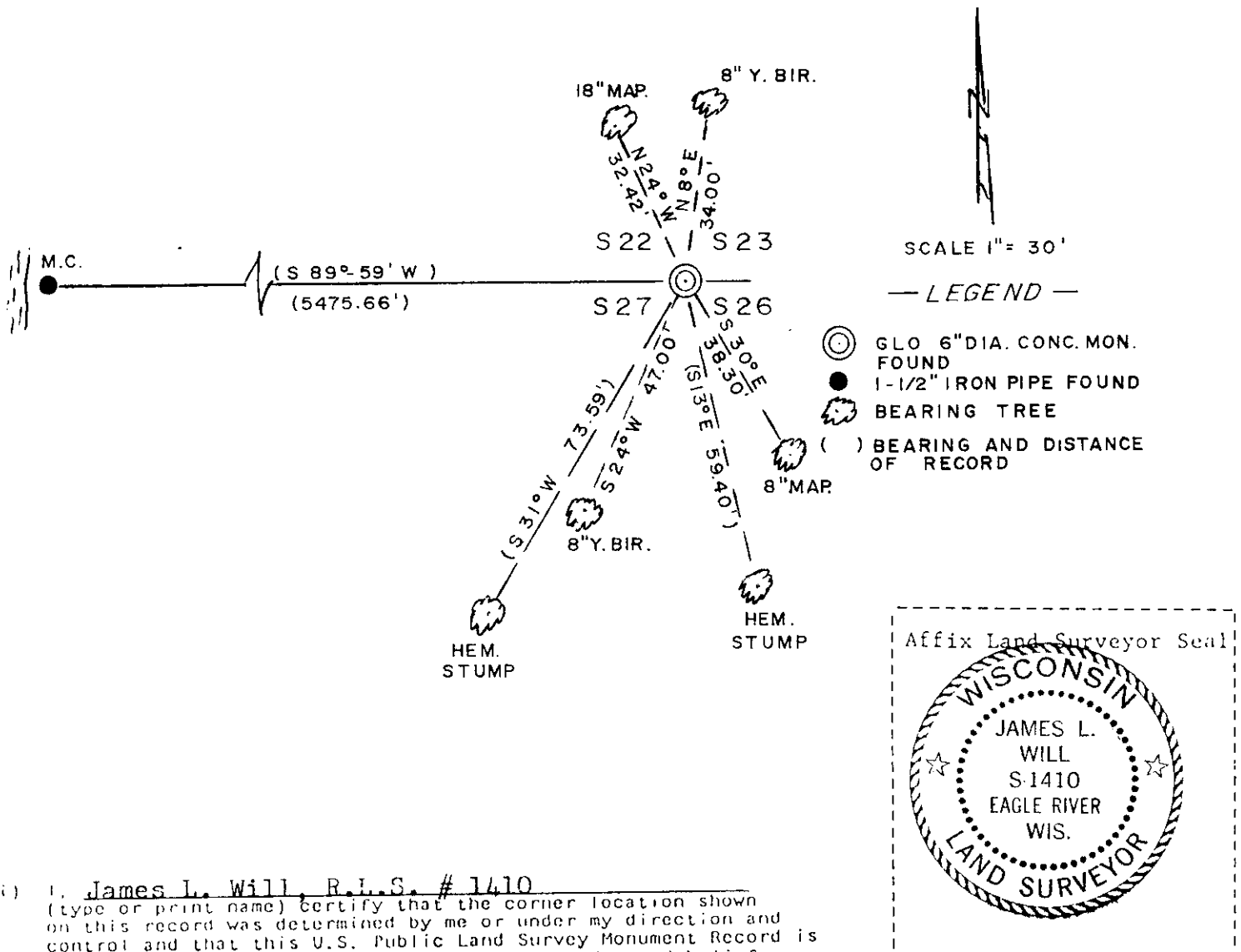
(e) Describe any material discrepancy between the location of the corner as restored or reestablished and the location of that corner as previously restored or reestablished by distance and direction. Show the discrepancy on the plan view drawing under (d), above. Show the distances between the corner as previously restored or reestablished and (1) the corner as restored or reestablished, and (2) to at least 2 of the witness monuments shown on the drawing in (d), above.

See drawing below.

(f) Was the corner restored through acceptance of (1) an obliterated evidence location, or, (2) a found perpetuated location?

Corner was restored through an accepted found perpetuated location.

(g&h) Was the corner reestablished through lost corner proportionate methods? If so, show the method, including the directions and distances to other public land survey corners used as evidence or used for proportioning in determining the corner location?



(i) I, James L. Will, R.L.S. # 1410
(type or print name) certify that the corner location shown on this record was determined by me or under my direction and control and that this U.S. Public Land Survey Monument Record is correct and complete to the best of my knowledge and belief.

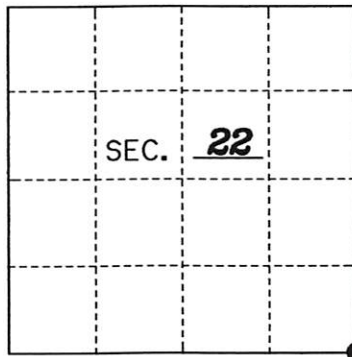
James L. Will
Signature

June 27, 1984
Date

U.S. PUBLIC LAND SURVEY MONUMENT RECORD

Note: This form is intended and designed to fulfill all requirements of Wisconsin Administrative Code, Chapter A-E 7.08 U.S. Public Land Monument Record (3)(a)(b)(c)(d)(e)(f)(g)(h)(i). An additional sheet may be added if necessary to conform with said requirements. Deeds Square

(a) CORNER LOCATION: Southeast
Section Corner of Section 22
 Township 38 North, Range 11 East
 Township/City Three Lakes
 County of Oneida



REGISTER OF DEEDS OFFICE
 ONEIDA COUNTY
 FILED
 JAN 22 2021
 KYLE J. FRANSON
 REGISTER OF DEEDS

(b) HISTORY OF ORIGINAL ESTABLISHMENT
 Original Surveyor: William E. Daugherty
 Date of Survey: 1859
 Original B.T.'s: 12" Hemlock N 50°W 11 lks.
10" Sugar S 31°W 14 lks.

The coordinate values shown have been determined by the average of multiple RTK GPS observations taken initially and returning to the site on a different day at a different time and taking additional multiple RTK GPS observations and averaging those with the initial observations.

County or State Plane Coordinates
 Northing 207819.514'
 Easting 346095.705'
 Datum Base WISCORS-ONEIDA GRID

NAD 83 (2011)

(b)(f)(g)(h) Description of monument found at this corner and if it was accepted, state all evidence (material, testimonial, occupational, plats, records, other monuments) used as a basis for accepting. If not accepted or if nothing was found, state evidence used as basis for establishing location. If reestablished through lost corner proportionate methods, indicate all monuments, distances and directions used to establish. Indicate type of monument and sign post found or set.

As part of an Oneida County Land Information Office contract to preserve Public Land Survey System corners in roadways that may be obliterated due to road resurfacing, I have performed the following corner maintenance as described below:

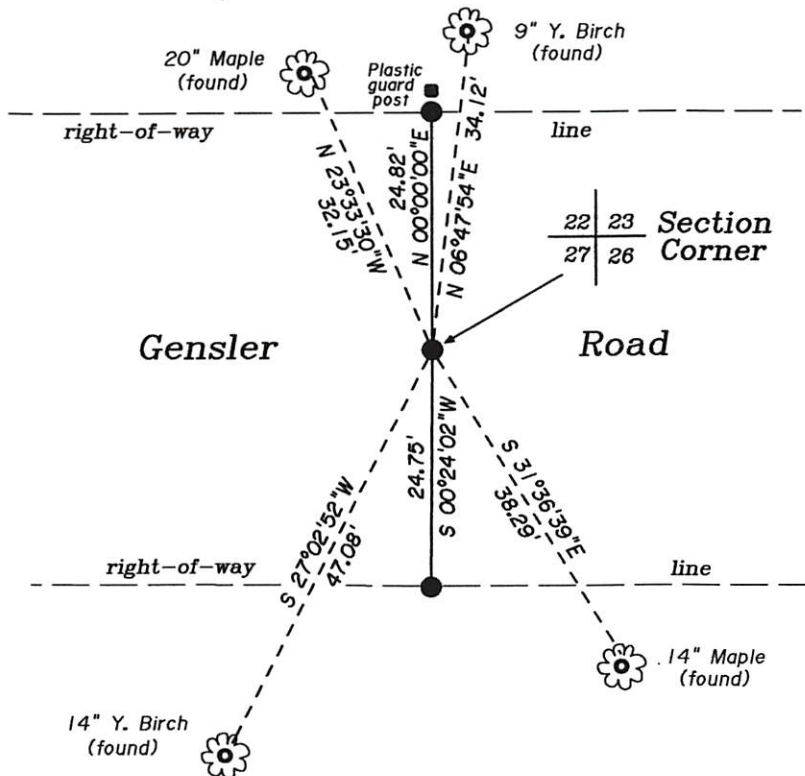
1986: James L. Will finds broken off G.L.O concrete brass cap monument in the centerline of the Town Road with the following reference ties:
 G.L.O B.T.'s: 18" Maple N24°W 32.42' Hemlock Stump S13°E 59.40' Hemlock Stump S31°W 73.59'
 Other B.T.'s: 8" Maple S30°E 38.30' 8" Y. Birch S24°W 47.00' 8" Y. Birch N8°E 34.00'

June, 2019: Kip W. Soder finds a 1" dia. iron pipe 5" below the surface and in the centerline of the gravel road and verifies the corner position through existing right-of-way monuments and reference ties as shown below.

December, 2019: Thomas Boettcher and Kip Soder return to the site after road resurfacing and set a magnetic P.K. Nail in the new road surface from the witness monuments.

December 2020: I, Thomas Boettcher, returned to the site and found the mag nail in place. I checked the witnesses as shown below and took a series of RTK GPS observations to average with the former GPS observations taken previously.

(c)(d)(e) Plan view of the corner with ties to at least 4 witness monuments. If in disagreement with previously established corner, show the distances between the two corners and also indicate the ties to the disputed.

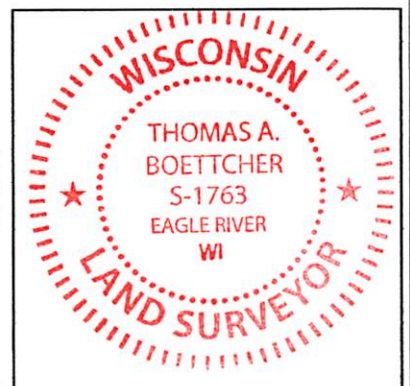


Scale: 1" = 20'

- 1" DIA. IRON PIPE FOUND IN PLACE
- ⊗ BEARING TREES
- BEARING TREES ARE MEASURED TO A NAIL IN SIDE OF TREE

(i) I, Thomas A. Boettcher P.L.S. No. 1763
 hereby certify that the corner location on this record was determined by me or under my direction and control and that this U.S. Public Land Survey Monument Record is correct and complete to the best of my knowledge and belief.

Signature Thomas A. Boettcher Date December 23, 2020



Index No. 381220000