

At THOMAS M. LEIGHTON
REGISTER OF DEEDS

Recorders Data

This form is intended to fulfill the requirements of Chapter A-E7.08 (3)(a) thru (i) U.S. Public Land Survey Monument Location Record, Wisconsin Administrative Code. Use the reverse side of form for continuation.

U.S. PUBLIC LAND SURVEY MONUMENT LOCATION RECORD

USPLS CORNER: NORTH 1/4 CORNER SECTION: 27 TOWNSHIP: 38 NORTH RANGE: 11 EAST

NAME OF WATERWAY FOR M.C. CORNER : N/A SECTION LINE: N/A

~~(CITY)(VILLAGE)(TOWN)~~ OF: THREE LAKES COUNTY OF: ONEIDA

Description of monument found or placed and all other evidence used as the basis for monument location; including monuments and measurements required if the corner location was reestablished by lost corner proportionate methods. Also indicate name of the original surveyor, original survey date and the corner monument, bearing trees, witness or other reference monuments established, including measured bearing and distance ties, from available survey records.

Found undisturbed stamped cap of standard Oneida County aluminum monument 7" below outer edge of existing 22' wide gravelled roadway curve leading North and East, as noted by Kip Soder/RLS 1731 in 1992; however, no location record has been filed in Oneida County records to date. Upon query, Soder agreed that I should file a location record.

In September 1859, William E. Daugherty set a wood post as the original corner and noted OBTs: an 8" Hemlock N72°E 18 links and a 10" Sugar S27°W 12 links; all are now obliterated within roadway area.

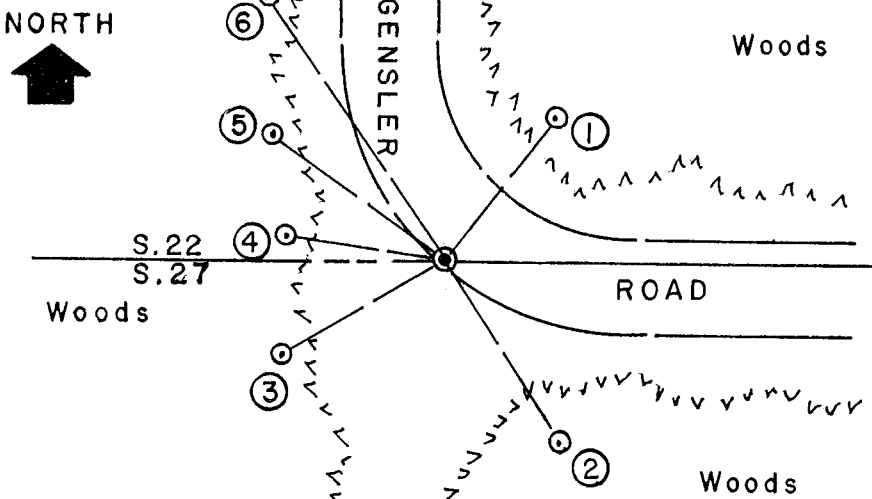
Kip Soder/RLS 1731 refers to this corner as a n Oneida County aluminum monument per legend notation on the following Plats of Survey filed in Oneida County survey records: no further records considered necessary for this corner recovery.

B-2703 dated September 1992 B-3452 dated May 1996
B-3622 dated December 1996 B-4256 dated June 1999

I set a standard white poly 'T' marker post 5" SW of SW rebar reference monument per ties below, painted the open blaze of NW By BT blaze orange and nailed a standard BT sign to its upper face; and flagged 'T' post and all other BTs with blaze orange tape.

Recovery completed July 18, 2003; there were no direct witnesses.

Plan view map of monument location with bearing and distance ties to a minimum of four(4) described witness or reference monuments of concrete, natural stone, iron, live bearing trees or equivalent material. If applicable, also show a minimum of two(2) bearing and distance ties to any other monument found and not accepted; including the bearing and distance from the accepted monument.



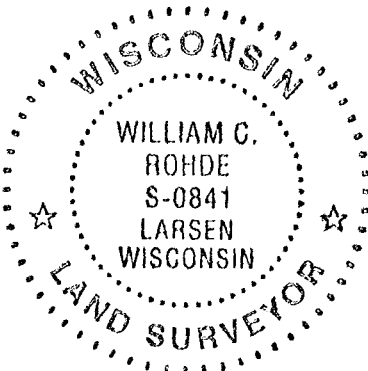
WITNESS MONUMENT TIES:

- ① Old 7" Mr BT with upper blaze scar plain N37°E 37.90'.
- ② New South 6" Fir BT of two S33°E 44.78'.
- ③ 5/8" dia. by 24" long rebar set with yellow poly reference mark cap 1" up S60°W 38.70'.
- ④ New 10" Mr BT N80°W 33.15'.
- ⑤ Old 16" By BT with face blaze open & scribed N53°W 45.15'.
- ⑥ New 9" Mr BT N35°W 69.35'.

SCALE: 1" = 40'

Unless otherwise indicated, all bearing tree ties are to a .25" dia. by 2.5" long PK nail with a 1.25" dia. steel washer driven into unblazed right face and a .25" dia. by 2.5" long PK nail with a 2" dia. steel washer stamped BT is also driven into unblazed face of bearing tree at DBH; the basis for measured bearings is by compass to nearest degree and all tie distances are measured horizontal by steel tape corrected to nearest 1/100th feet at standard temperature of 68° F.

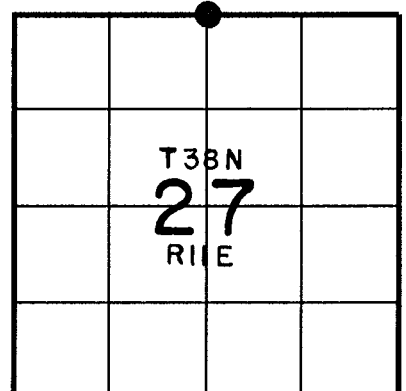
RLS SEAL:



LAND SURVEYOR CERTIFICATE:

I, William C. Rohde, hereby certify that I am duly licensed as a Professional Land Surveyor in the State of Wisconsin; that this USPLS monument location was determined by me and/or under my direct supervision and control; and that this U.S. Public Land Survey Monument Location Record is true and correct to the best of my knowledge and belief.

Signed William C. Rohde
William C. Rohde RLS 841



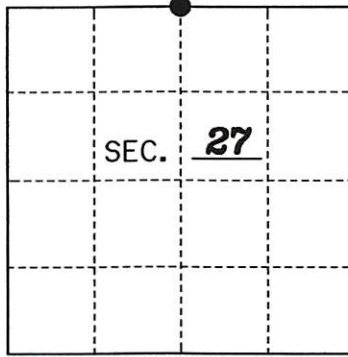
SECTION LOCATION MAP
INDEX NO. R-15

3811220020

U.S. PUBLIC LAND SURVEY MONUMENT RECORD

Note: This form is intended and designed to fulfill all requirements of Wisconsin Administrative Code, Chapter A-E 7.08 U.S. Public Land Monument Record (3)(a)(b)(c)(d)(e)(f)(g)(h)(i). An additional sheet may be added if necessary to conform with said requirements. Deeds Square

(a) CORNER LOCATION: North 1/4
 Corner of Section 27
 Township 38 North, Range 11 East
 Township/City Three Lakes
 County of Oneida



REGISTER OF DEEDS OFFICE
 ONEIDA COUNTY
 FILED

JAN 22 2021

KYLE J. FRANSON
 REGISTER OF DEEDS

(b) HISTORY OF ORIGINAL ESTABLISHMENT
 Original Surveyor: William E. Daugherty
 Date of Survey: 1859
 Original B.T.'s: 8" Hemlock N72°E 18 lks.
10" Sugar S27°W 12 lks.

County or State Plane Coordinates
 Northing 207760.377'
 Easting 343313.772'
 Datum Base WISCORS-ONEIDA GRID

NAD 83 (2011)

The coordinate values shown have been determined by the average of multiple RTK GPS observations taken initially and returning to the site on a different day at a different time and taking additional multiple RTK GPS observations and averaging those with the initial observations.

(b)(f)(g)(h) Description of monument found at this corner and if it was accepted, state all evidence (material, testimonial, occupational, plats, records, other monuments) used as a basis for accepting. If not accepted or if nothing was found, state evidence used as basis for establishing location. If reestablished through lost corner proportionate methods, indicate all monuments, distances and directions used to establish. Indicate type of monument and sign post found or set.

As part of an Oneida County Land Information Office contract to preserve Public Land Survey System corners in roadways that may be obliterated due to road resurfacing, I have performed the following corner maintenance as described below:

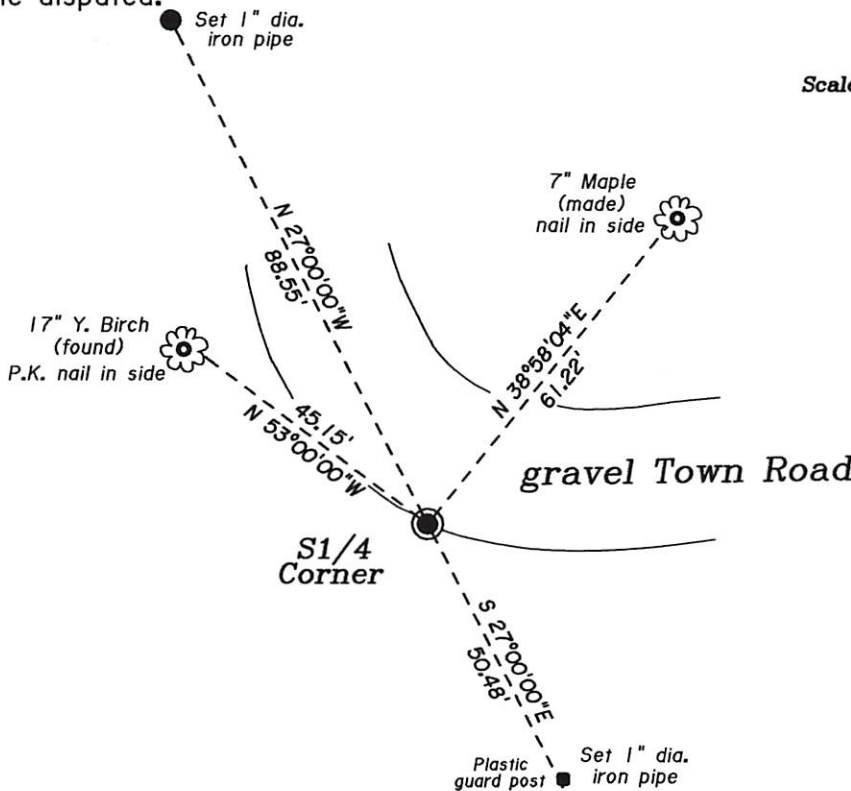
Oneida Co. aluminum monument referred to in previous surveys of Oneida Co. records
 B2703 dated September 1992 B3452 dated May 1996
 B3622 dated December 1996 B4256 dated June 1999

August, 2003: William Rhode finds an Oneida County aluminum cap monument with existing B.T.'s
 7" R. Maple N37°E 37.90' 16" Y. Birch N53°W 45.15'
 Established new B.T.'s: 6" Fir S33°E 44.78' 10" R. Maple N80°W 33.15'
 9" R. Maple N35°W 69.35' Set 5/8" iron rod S60°W 38.70'

June, 2019: Kip W. Soder finds the Oneida Co. aluminum cap monument 8" below surface on the south edge of Gensler Road in good condition with corner ties as shown below:

December 2020: I, Thomas Boettcher, returned to the site and set a magnetic P.K. Nail over the aluminum capped monument in the gravel from the witness monuments and took a series of RTK GPS observations to average with the former observations taken in June of 2019. The monument does not fall in the traveled roadway. I checked the witnesses as shown below.

(c)(d)(e) Plan view of the corner with ties to at least 4 witness monuments. If in disagreement with previously established corner, show the distances between the two corners and also indicate the ties to the disputed.



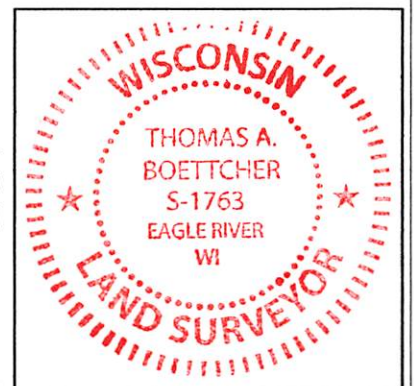
Scale: 1" = 30'



(i) I, Thomas A. Boettcher P.L.S. No. 1763

hereby certify that the corner location on this record was determined by me or under my direction and control and that this U.S. Public Land Survey Monument Record is correct and complete to the best of my knowledge and belief.

Signature [Signature] Date December 23, 2020



Index No. 38/1220020

R-15