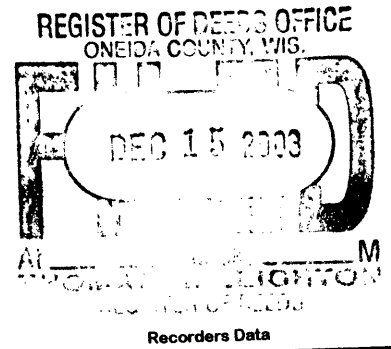


This form is intended to fulfill the requirements of Chapter A-E7.08 (3)(a) thru (i) U.S. Public Land Survey Monument Location Record, Wisconsin Administrative Code. Use the reverse side of form for continuation.



U.S. PUBLIC LAND SURVEY MONUMENT LOCATION RECORD

USPLS CORNER: EAST WIT MC SECTION: 27 TOWNSHIP: 38 NORTH RANGE: 11 EAST
 NAME OF WATERWAY FOR M.C. CORNER : BIG LAKE SECTION LINE: NORTH
 (CITY)(VILLAGE)(TOWN) OF: THREE LAKES COUNTY OF: ONEIDA

Description of monument found or placed and all other evidence used as the basis for monument location; including monuments and measurements required if the corner location was reestablished by lost corner proportionate methods. Also indicate name of the original surveyor, original survey date and the corner monument, bearing trees, witness or other reference monuments established, including measured bearing and distance ties, from available survey records.

Found and accepted an older unrecorded standard 2" dia. aluminum pipe monument with stamped Oneida County cap 3" up; also a very old 1.25" dia. galvanized well point with uncapped top 18" up and tipped 30° +/- West at 27" West of the aluminum monument that is about 3' East of existing rock riprapped lakeshore bearing N20°E. No older BTs observed nearby. An old fenceline leads East of corner monument. Corner is accessible at NW corner of improved lake lot at Fire No. 6101 East Big Lake Loop Road.

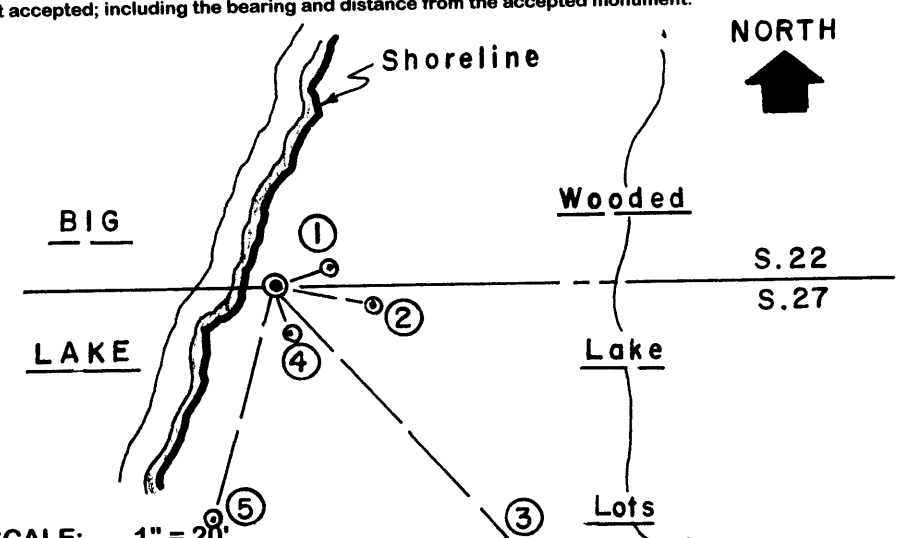
In September 1859, William E. Daugherty/GLO set a wood post as original MC and noted OBTs: a 10" Py N18°E 16 links and a 10" Py S23°E 17 links; all are now undoubtedly obliterated in impounded lake bed due to dam on the Eagle River in Section 5.

In July 1984, James Will/RLS 1410 notes a 1.5" dia. well point per legend on Plats of Survey filed as B-185 and B-186 in Oneida County survey records; no BTs noted.

Further records search revealed no surveys supporting the aluminum monument found, so I queried local surveyor Kip Soder who believed that it had been previously set by Eagle Landmark Surveying on the section line, undoubtedly as a new Wit MC East of the old well point of record, and that he had traversed to it for section line control purposes.

This recovery completed August 13, 2003; there were no direct witnesses.

Plan view map of monument location with bearing and distance ties to a minimum of four(4) described witness or reference monuments of concrete, natural stone, iron, live bearing trees or equivalent material. If applicable, also show a minimum of two(2) bearing and distance ties to any other monument found and not accepted; including the bearing and distance from the accepted monument.



- WITNESS MONUMENT TIES:**
- ① New 6" Hemlock BT N70°E 5.95'.
 - ② New 7" Fir BT S79°E 10.09'.
 - ③ New 9.5" Fir BT S42°E 38.35'.
 - ④ New 9" Bw BT S16°E 5.11'.
 - ⑤ New 7.5" Fir BT S15°W 26.33'.
- No standard white poly 'T' marker post set due to rocky subgrade conditions.

SCALE: 1" = 20'
 Unless otherwise indicated, all bearing tree ties are to a .25" dia. by 2.5" long PK nail with a 1.25" dia. steel washer driven into unblazed right face and a .25" dia. by 2.5" long PK nail with a 2" dia. steel washer stamped BT is also driven into unblazed face of bearing tree at DBH; the basis for measured bearings is by compass to nearest degree and all tie distances are measured horizontal by steel tape corrected to nearest 1/100th feet at standard temperature of 68° F.

RLS SEAL:



LAND SURVEYOR CERTIFICATE:

I, William C. Rohde, hereby certify that I am duly licensed as a Professional Land Surveyor in the State of Wisconsin; that this USPLS monument location was determined by me and/or under my direct supervision and control; and that this U.S. Public Land Survey Monument Location Record is true and correct to the best of my knowledge and belief.

Signed: *William C. Rohde*
 William C. Rohde RLS 841

	T 38N		
	27		
	R 11E		

SECTION LOCATION MAP INDEX NO. R 13-14

Date Signed: December 1, 2003

38//220039