

At _____ O'Clock _____ M

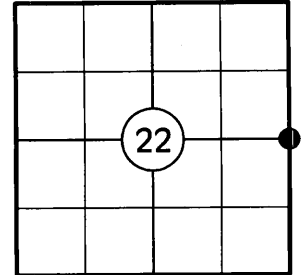
THOMAS H. LEIGHTON
REGISTERED DEEDS

U.S. PUBLIC LAND SURVEY MONUMENT RECORD

NOTE: THIS FORM IS INTENDED AND DESIGNED TO FULFILL ALL REQUIREMENTS OF WISCONSIN ADMINISTRATIVE CODE CHAPTER A-E 7.08 U.S. PUBLIC LAND SURVEY MONUMENT RECORD (3) (a)(b)(c)(d)(e)(f)(g)(h)(i). AN ADDITIONAL SHEET MAY BE ADDED IF NECESSARY TO CONFIRM WITH SAID REQUIREMENTS.

(a) CORNER LOCATION:

E 1/4 CORNER OF SECTION 22
TOWNSHIP 38 NORTH
RANGE 11 EAST
TOWN OF THREE LAKES
COUNTY OF ONEIDA



(b) HISTORY OF ORIGINAL CORNER:

ORIGINAL SURVEYOR: WILLIAM E. DAUGHERTY
DATE OF SURVEY: AUG - SEPT, 1859

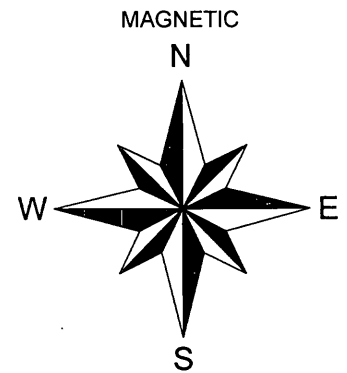
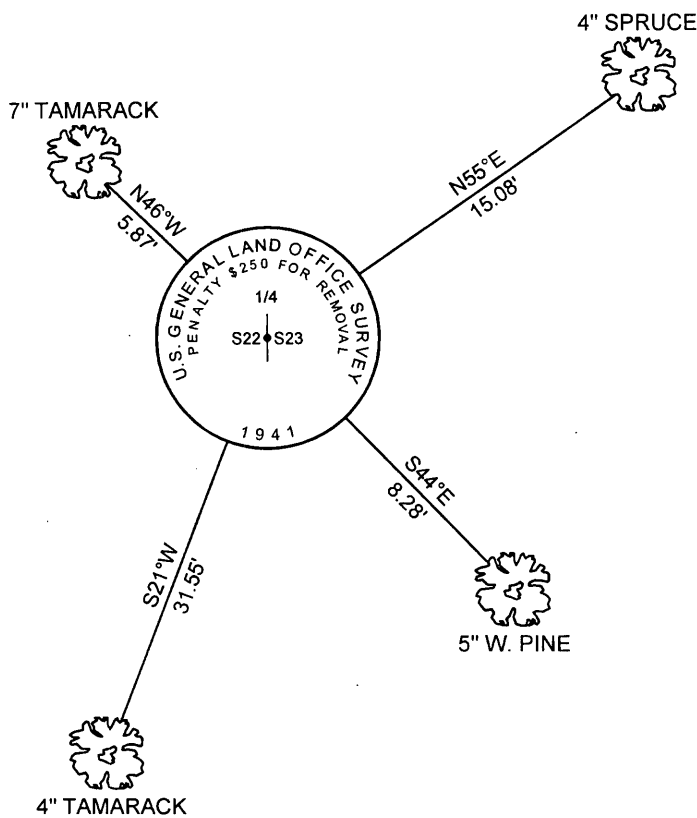
ORIGINAL BEARING TREES: 8" TAMARACK - N29°E, 8 LKS
6" TAMARACK - S61°W, 11 LKS

(f)(g)(h) DESCRIPTION OF MONUMENT FOUND AT THIS CORNER AND IF IT WAS ACCEPTED STATE ALL EVIDENCE (MATERIAL, TESTIMONIAL, OCCUPATIONAL, PLATS, RECORDS, OTHER MONUMENTS) USED AS A BASIS FOR ESTABLISHING LOCATION. IF REESTABLISHING THROUGH LOST CORNER PROPORTIONATE METHODS, INDICATE ALL MONUMENTS, DISTANCES, AND DIRECTIONS USED TO ESTABLISH. INDICATE TYPE OF MONUMENT AND SIGN POST FOUND OR SET.

- 1859: WILLAM E. DAUGHERTY SET THE ORIGINAL 1/4 SECTION POST.
- 1941: HUGH CRAWFORD SET A 2" DIA. BRASS CAPPED IRON PIPE AT THE ORIGINAL CORNER POSITION AS DETERMINED BY THE REMAINS OF AN ORIGINAL BEARING TREE DURING HIS DEPENDENT RESURVEY OF A PORTION OF T 38 N, R 11 E. HE NOTES AN ORIGINAL 6" TAMARACK STUMP - S61°W, 11 LKS AND TWO NEW BT'S: 20" NORWAY PINE - N88.5°E, 105 LKS AND A 5" TAMARACK - N61.75°W, 297.5 LKS.
- 1949: F. R. WINCENTSEN SHOWS A 1941 G.L.O. MONUMENT MARKING THE 1/4 CORNER ON HIS SURVEY IN SECTION 22.

MARCH 24, 2010: I FOUND A 2" DIA. G.L.O. BRASS CAPPED IRON PIPE STAMPED AS SHOWN BELOW IN GOOD CONDITION. THE CORNER IS LOCATED IN A TAMARACK AND TAG ALDER SWAMP. THE NORWAY PINE BT IS NOW A DEAD STUB. I SET A PLASTIC POST 1' WEST OF THE MONUMENT AND MADE FOUR BEARING TREES AS SHOWN BELOW.

(c)(d)(e) PLAN VIEW OF CORNER WITH TIES TO AT LEAST FOUR WITNESSES. IF IN DISAGREEMENT WITH PREVIOUSLY ESTABLISHED CORNER, SHOW THE DISTANCES BETWEEN THE TWO CORNERS AND ALSO INDICATE THE TIE TO THE DISPUTED CORNER.

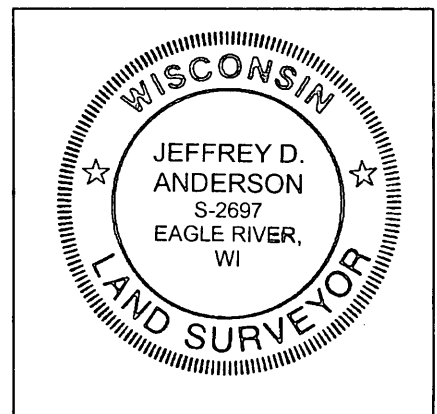


NOT TO SCALE
DISTANCES TO BT'S ARE TO NAIL IN SIDE

I JEFFREY D. ANDERSON, REGISTERED LAND SURVEYOR NO. 2697, HEREBY CERTIFY THAT THE CORNER LOCATION ON THIS RECORD WAS REFERENCED BY ME OR UNDER MY DIRECTION AND CONTROL AND THAT THIS U.S. PUBLIC LAND SURVEY MONUMENT RECORD IS COMPLETE TO THE BEST OF MY KNOWLEDGE AND BELIEF.

Jeffrey D. Anderson 3/26/10

SIGNATURE



3811222000

P 17