



Stock No. 26273

U.S. PUBLIC LAND SURVEY MONUMENT RECORD

Index No. R-21

State of Wisconsin

County of Oneida } ss.

I, William B. Cochran, do hereby certify that on the 14th day of February, 1990, I found evidence of the Southwest Section corner of Section 24, Township 38 North, Range 11 East, Fourth Principal Meridian, as described hereon; and that from this evidence I established a new monument and accessories as described hereon to perpetuate the original location of this corner.

Resident witnesses:

History of original corner establishment:

Dependent Resurvey in 1941 by Hugh B. Crawford. N0°35'W between Sections 25 and 26, at 80.78 chains, replaced a scribed cedar post with a concrete monument, 3 feet long, 2 inches in diameter, with a brass cap marked; T38N R11E, S23, S24, S25, S26, 1941. From which the following bear;

Spruce	6"	S53°15'E	12 1/2 links
Spruce	6"	S21°00'W	21 links
Spruce	4"	N64°45'W	57 links

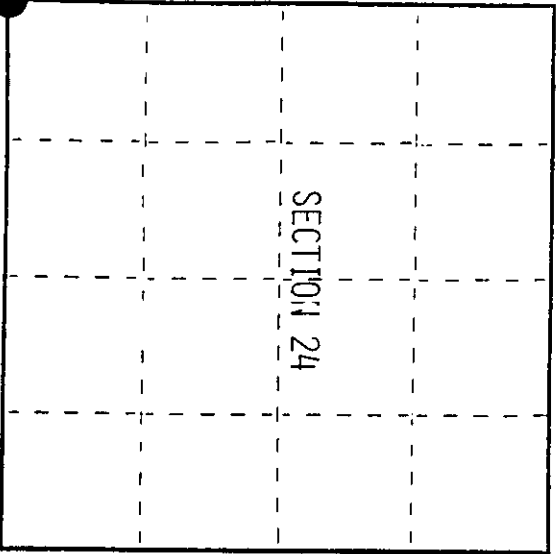
Description of corner evidence found:

Found monument as described and in place, from which the following bear;

Spruce	16"	N81°E	30.55 feet
Spruce	10"	S52°E	14.20 feet
Spruce	13"	S21°W	13.86 feet (GLO BT)
4"x4" Cedar Sign Post		N20°E	1.80 feet

Description of monument and accessories I established to perpetuate the original location of this corner.

Painted and attached bearing tree signs to all bearing trees.



= Corner monument restored.

Dated at Hills, Wis., this 15th day of February, 1990.

Signature William B. Cochran, Title Land Surveyor, (County Surveyor, Registered Land Surveyor, or other duly authorized official) Registration No. S-1107

Office of Register of Deeds, County of Oneida, I hereby certify that the within instrument was filed in this office for record on the 15th day of February, 1990, at 10:00 o'clock A.M.

(Register of Deeds)

By: Deputy

3811230000

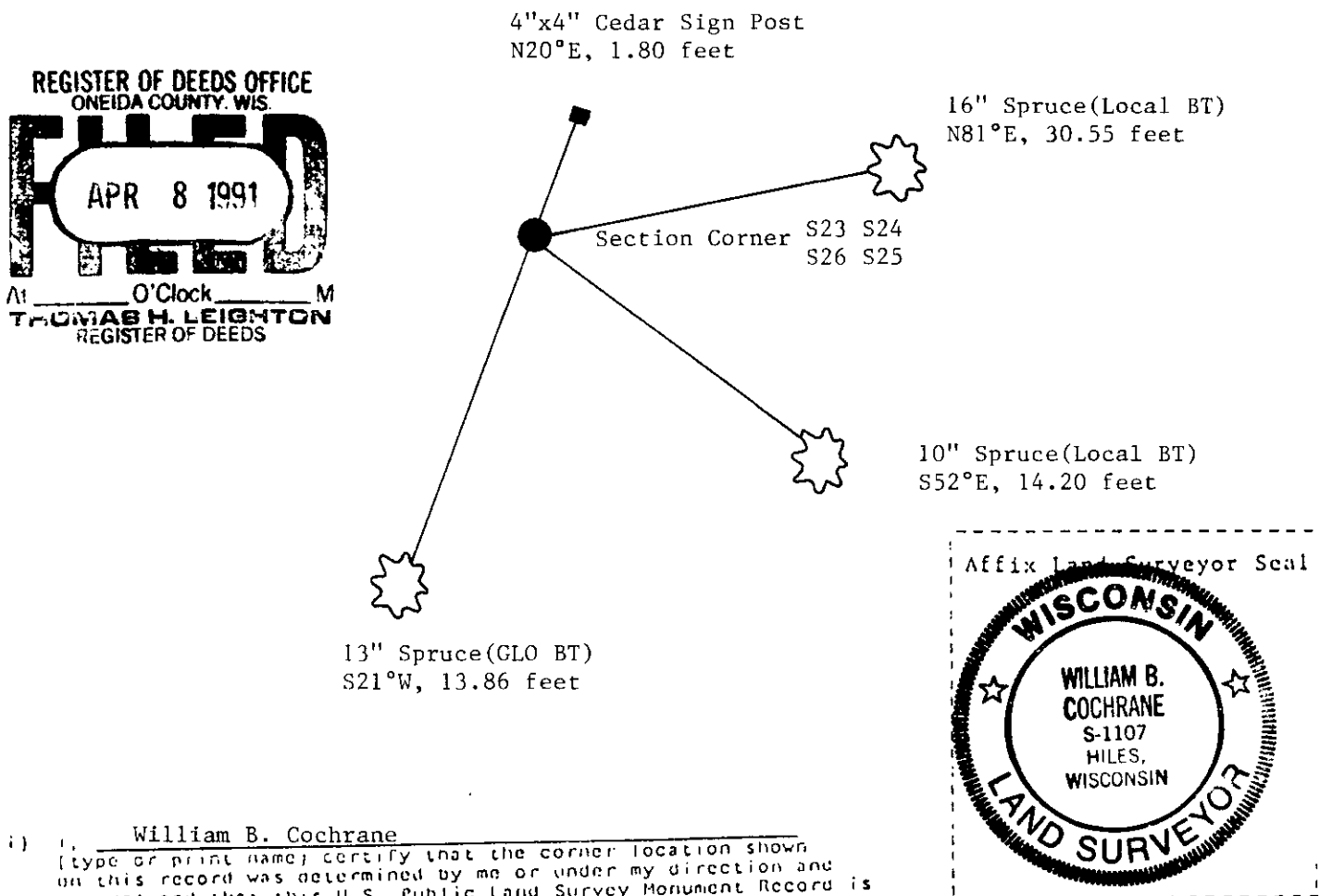
e) Describe any material discrepancy between the location of the corner as restored or reestablished and the location of that corner as previously restored or reestablished by distance and direction. Show the discrepancy on the plan view drawing under (d), above. Show the distances between the corner as previously restored or reestablished and (1) the corner as restored or reestablished, and (2) to at least 2 of the witness monuments shown on the drawing in (d), above.

See drawing below.

(f) Was the corner restored through acceptance of (1) an obliterated evidence location, or, (2) a found perpetuated location?

Restored through acceptance of a found perpetuated location.

(g&h) Was the corner reestablished through lost corner proportionate methods? If so, show the method, including the directions and distances to other public land survey corners used as evidence or used for proportioning in determining the corner location?



(i) I, William B. Cochrane (type or print name) certify that the corner location shown on this record was determined by me or under my direction and control and that this U.S. Public Land Survey Monument Record is correct and complete to the best of my knowledge and belief.

William B. Cochrane Signature Feb. 20, 1990 Date

Survey requested by; Sam Hordien District 3/1/90 Ranger