

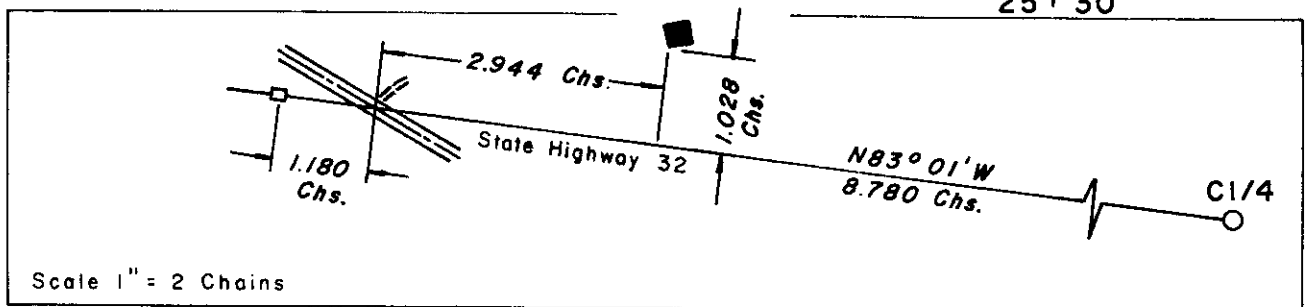
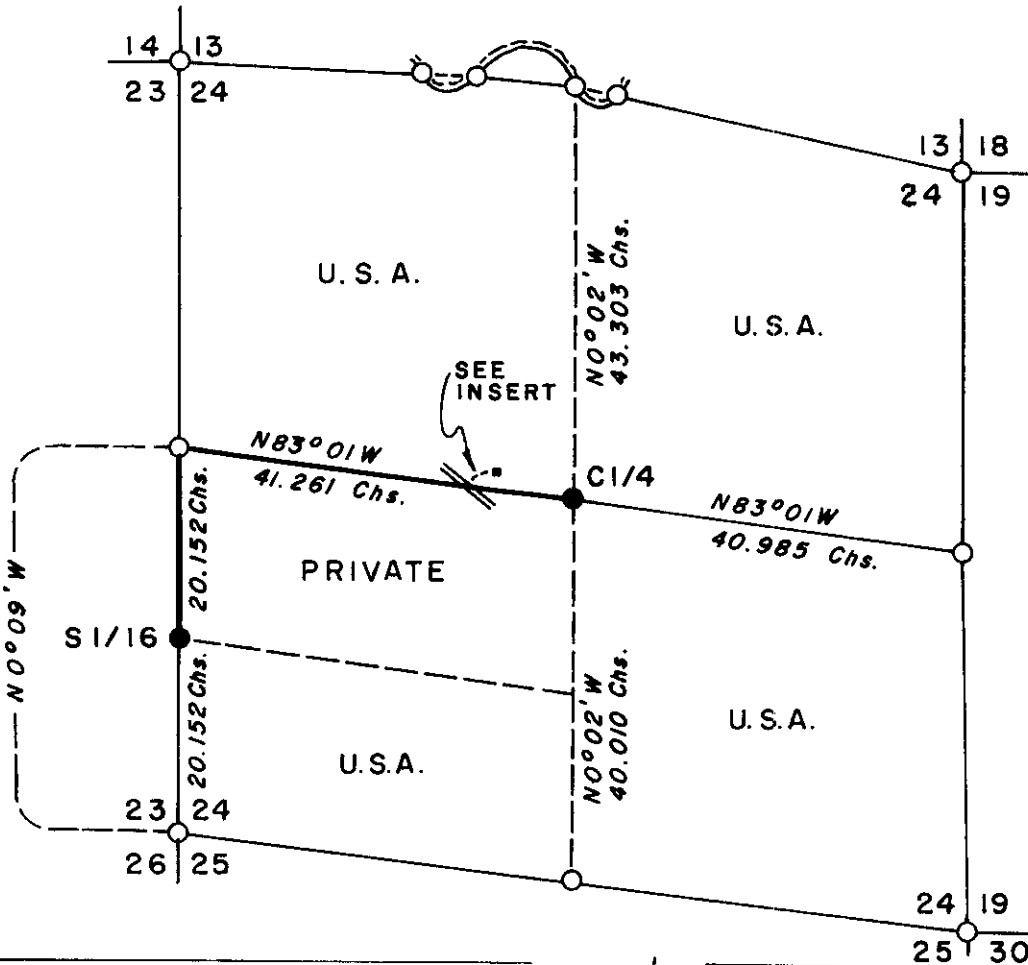
REGISTER'S OFFICE }
 Oneida County, Wis. }
 Received for Record the 12th day of
January A. D. 19 76 at
200 o'clock P. M. and recorded in
Vol 101 Page 100
Doris M. Hager, Register
 Register

PLAT OF SURVEY U. S. GOVERNMENT LAND

Sheet 1 of 3

Being all of Section 24 except the North half of SW 1/4
 Section 24, T. 38 N. R. 11 E. 4th P. M.

Oneida County, Wisconsin



LEGEND

- BLM Monuments, 1941 Dependent Resurvey
- ? Inch I.D. by 5 foot long iron pipe capped with 3 inch brass tablet stamped to identify corner
- Unsurveyed Section Subdivision Line
- Boundary U.S. Government Land Marked
- 4" x 4" Cedar Line Post
- 20' x 22' Cabin

3811231000
 3811242020

P-23